

Catherine

BY JO MORTON

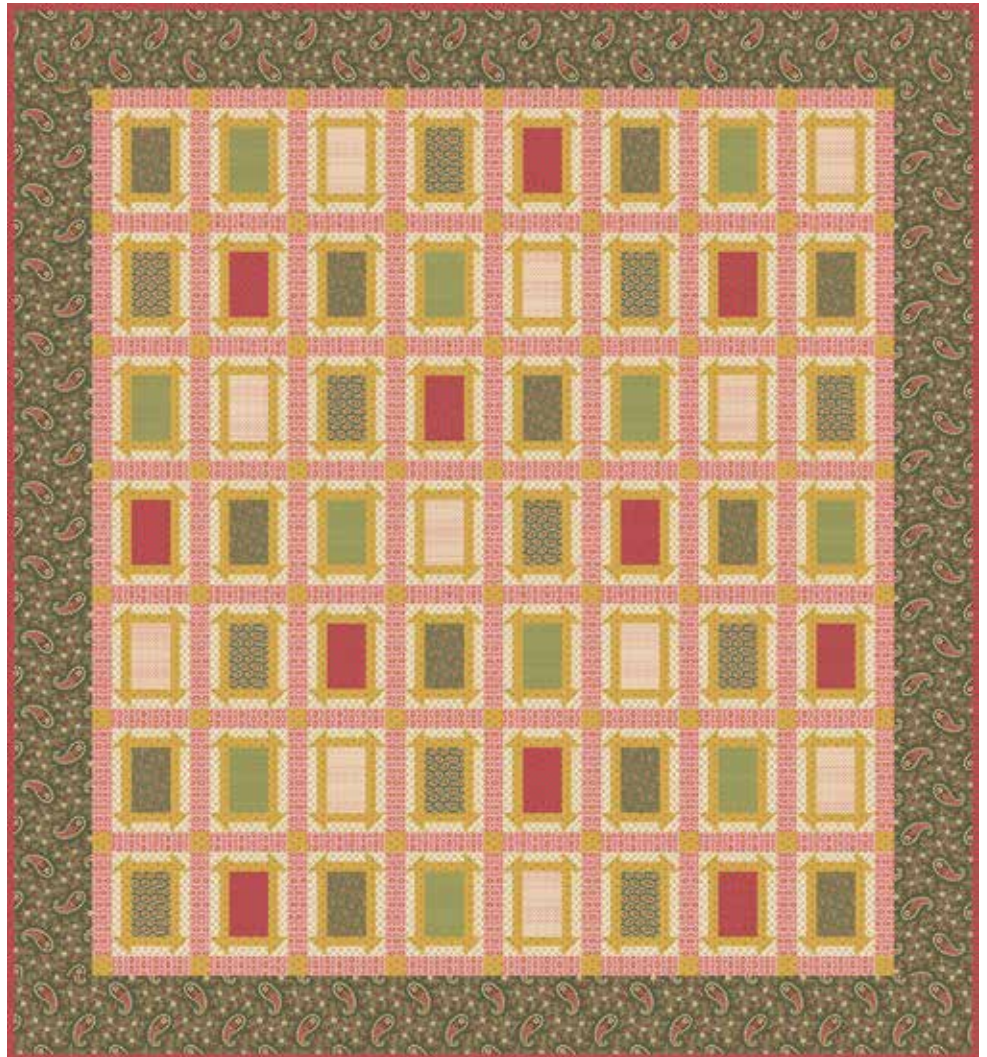


Homestead quilt designed and made by **Candy Hargrove**

Quilted by: **Maggi Honeyman**

Quilt Size: **74" x 80½"**

andoverfabrics.com



About Catherine

No surprise to anyone who likes my fabrics . . . I love paisley prints! Viney leaves and flowers meander between the paisley motifs in the main print. The fun begins finding companions to create a beautiful group. I think Catherine is a trifecta! — *Jo Morton*

andover



makower uk
The Henley Studio

Free Pattern Download Available

1384 Broadway New York, NY 10018
Tel. (800) 223-5678 • andoverfabrics.com



7897-B



7897-G 2¼ yds



7897-N



7898-B



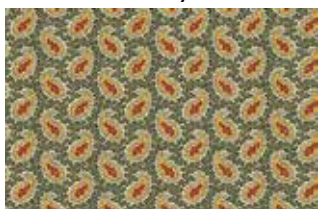
7898-G Fat ¼ yd



7898-N



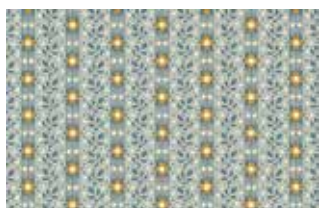
7899-B



7899-G Fat ¼ yd



7899-N



7900-B



7900-GR 1¾ yds



7900-NO



7901-B



7901-GR 1 yd
(includes binding)



7901-N



7902-B



7902-G 1¾ yds



7902-N 5 yds
(backing)



7903-BY



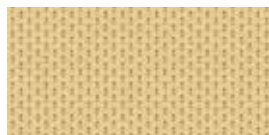
7903-GY 2 yds



7903-N



7904-B



7904-BN



7904-G Fat ¼ yd



7904-GR Fat ¼ yd



7904-NO

FABRIC	5 KITS	10 KITS	20 KITS
7897-G	1	2	4
7900-GR	1	2	3
7901-GR	1	1	2
7902-G	1	2	3
7903-GY	1	2	3
FROM EACH	1	1	1
7898-G 7899-G 7904-G 7904-GR			

BACKING

7902-N	2	4	7
--------	---	---	---

Yardage needed for backing:
5 YDS per kit

Bolts needed to cut project kits.
15 yds = 1 bolt

Fabrics shown are 25% of actual size.
Fabrics used in quilt pattern are shown in black.

Catherine
BY JO MORTON

andover : makower uk
: The Hanley Studio