

Coffee Buzz



Finished size: 54" x 65"

Featuring the
Coffee Buzz Collection
by Kathy Hall

Quilt designed by Jean Ann Wright



makower uk[®]

1384 Broadway • New York, NY 10018
(800) 223-5678 • www.andoverfabrics.com

Coffee Buzz

by Kathy Hall

Fabrics shown are 25% of actual size. *Indicates fabrics used in quilt pattern



makower uk®

1384 Broadway · New York, NY 10018
(800) 223-5678 · www.andoverfabrics.com



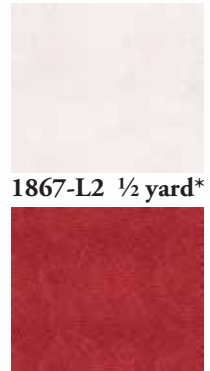
4351-T 1¼ yards



4352-T ¾ yard*



4353-N ¾ yard*



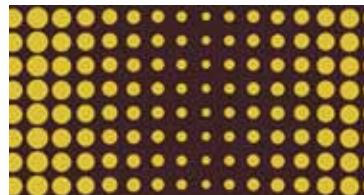
1867-L2 ½ yard*



4355-N ⅜ yard*



4355-O ⅜ yard*



4354-N ¾ yard*



1867-R8 ½ yard*



1867-T2 1 yard*
(includes binding)



4351-LK



4351-K



4353-LK



4353-K



4354-LK



4354-K



4352-LK



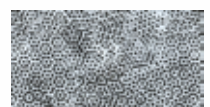
4352-K



4355-LK



4355-K



1867-AK



1867-K2

Bolts needed to cut project kits

Fabric	10 kits	20 kits	30 kits	40 kits	50 kits
4351-T	1	2	3	4	5
4352-T	1	1	2	2	3
4353-N	1	1	2	2	3
4354-N	1	1	2	2	3
4355-N	1	1	1	1	2
4355-O	1	1	1	1	2

Fabric	10 kits	20 kits	30 kits	40 kits	50 kits
1867-R8	1	1	1	2	2
1867-T2	1	2	2	3	4
1867-L2	1	1	1	2	2

*Extra yardage needed for backing – 3½ yards

Backing fabric

Fabric	10 kits	20 kits	30 kits	40 kits	50 kits
*4351-T	3	5	8	10	13