



# DeLovely

*Fabrics by Cosmo Cricket*



1384 Broadway  
New York, NY 10018  
(800) 223-5678

[www.andoverfabrics.com](http://www.andoverfabrics.com)

Quilt designed by Jean Ann Wright  
Finished size: 60" x 80"

Revised  
3/11/11



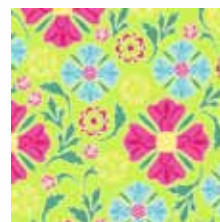
# DeLovely

Fabrics by Cosmo Cricket

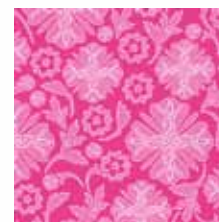
Fabrics shown are 20% of actual size.  
All fabrics are used in quilt pattern.



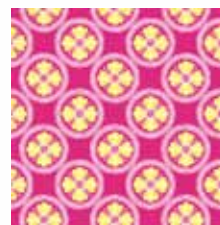
5362-M 5 yards (backing)



5364-G 1 1/8 yards



5364-E 1 yard



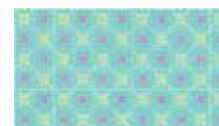
5365-E 3/8 yard



5365-Y 1 1/8 yards



5366-G 1/2 yard



5366-T 5/8 yard



5367-T 3/8 yard



5367-E 2/3 yard



5368-M 1/4 yard



5368-Y 2/3 yard



5363-M 2 yards

## Bolts needed to cut project kits

Fabric	10 kits	20 kits	30 kits
5363-M	2	3	4
5364-G	1	2	3
5364-E	1	2	2
5365-E	1	1	1
5365-Y	1	2	3
5366-G	1	1	1
5366-T	1	1	2
5367-E	1	1	2
5367-T	1	1	1
5368-M	1	1	1
5368-Y	1	1	2

## Backing Fabric

5362-M	4	7	10
--------	---	---	----

\*Yardage needed for backing (5 yards or two 88" x WOF lengths per kit)