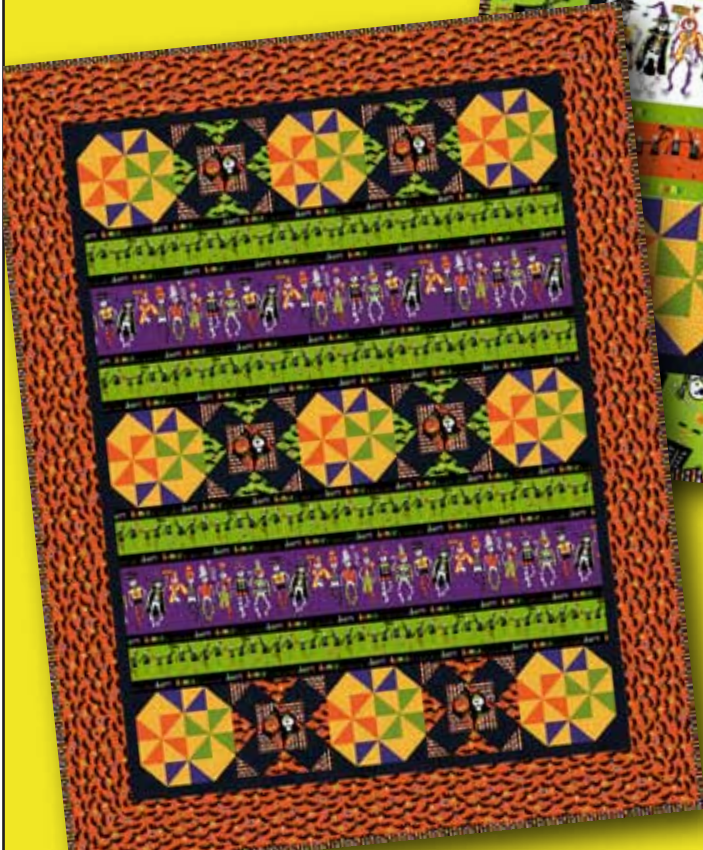


DEM BONES



Fabrics by
Carol Eldridge



Quilt designed by
Jean Ann Wright
Quilt size: 52" x 67"

Andover
Fabrics™
makower uk®

1384 Broadway · New York, NY 10018
(800) 223-5678 · www.andoverfabrics.com

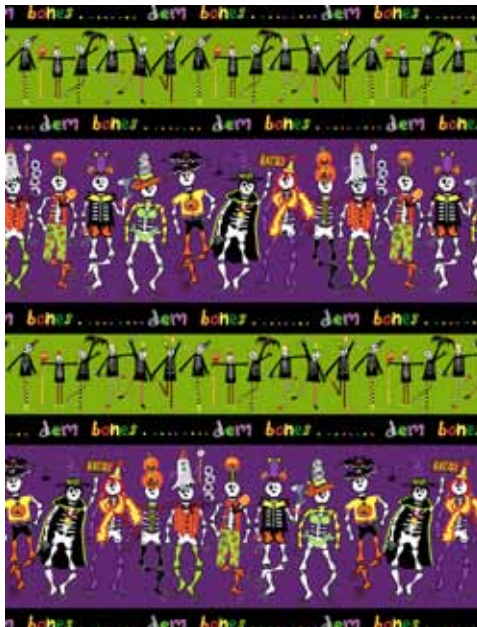
DEM BONES

Fabrics by Carol Eldridge

Fabrics shown are 15% of actual size.
Fabrics used in featured quilt pattern are indicated in red



5260-M 1 1/4 yards



5260-P



5259-G 1 1/8 yards



5259-M 4 1/8 yards (backing)



5261-Y 1/4 yard



5261-K



5262-O 3/8 yard

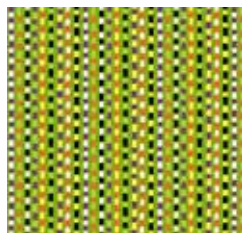


5262-G

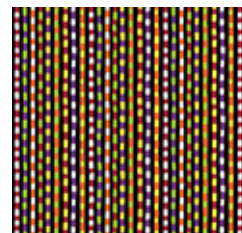


5259-P

Light Quilt	Dark Quilt	10 kits	20 kits	30 kits
5259-G	5262-O	1	2	3
5260-M	5260-P	1	2	3
5261-Y	5261-K	1	1	1
5263-G	5263-K	1	1	1
5262-O	5262-G	1	1	1
2847-Y	2847-Y	1	1	1
2847-O	2847-O	1	1	1
2847-G5	2847-G5	1	1	1
2847-P3	2847-P3	1	1	1
2847-K	2847-K	1	2	2
Binding Fabric				
5263-M	5263-M	1	1	2
Backing Fabric				
5259-M	5259-P	3	6	9
*Yardage needed for backing (4 1/2 yards or two 75" x WOF lengths per kit)				



5263-G 1/3 yard



5263-M 5/8 yard (binding)



5263-K



2847-Y 1/3 yard



2847-O 1/3 yard



2847-G5 1/3 yard



2847-P3 1/3 yard



2847-K 7/8 yard



makower uk®