



Quilt designed by Heidi Pridemore  
 Quilt size: 62" x 72"



# Flutterby

Mary Engelbreit™

©Mary Engelbreit Enterprises, Inc. All Rights Reserved  
 under License to Andover Fabrics Inc.



1384 Broadway  
 New York, NY 10018  
 (800) 223-5678

[www.andoverfabrics.com](http://www.andoverfabrics.com)

Revised 4/13/12

# Flutterby



**makower uk**

1384 Broadway  
New York, NY 10018  
(800) 223-5678

www.andoverfabrics.com

©Mary Engelbreit Enterprises, Inc.

All Rights Reserved under License to Andover Fabrics Inc.

*Fabrics shown are 10% of actual size.  
Fabrics used in featured quilt pattern are indicated in red.*



5806-L 2/3 yd – 1 panel



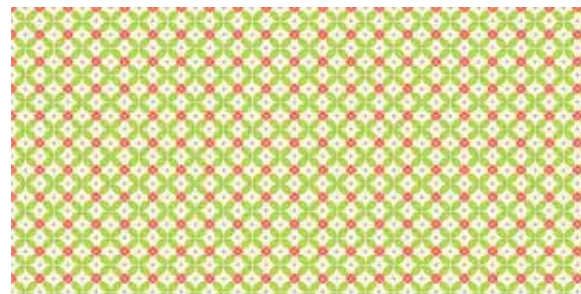
5808-L 1 1/3 yds



5807-L 1 2/3 yds



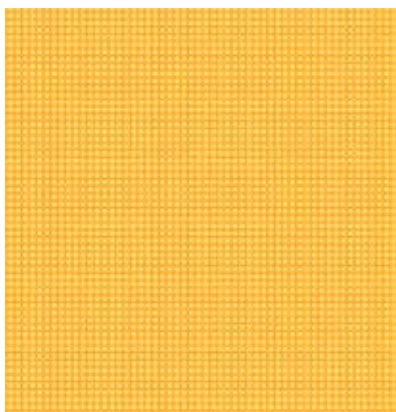
5809-L 3/8 yd



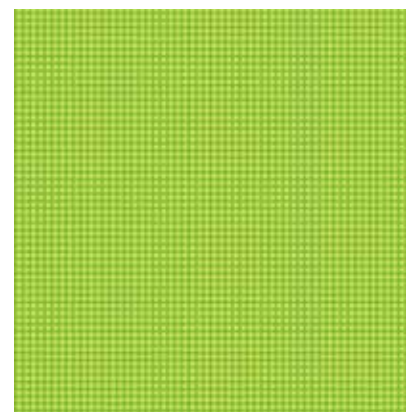
5810-L 1/3 yd (extra yardage needed for backing)



5811-L 1/4 yd



5812-L 1/4 yd



5812-LG 7/8 yd  
(includes binding)

Bolts needed to cut project kits									
Light	Brown	10 kits	20 kits	30 kits	Light	Brown	10 kits	20 kits	30 kits
5806-L	5806-N	1	1	2	5810-L*	5810-N	1	1	1
5807-L	5807-N	2	3	4	5812-LG	5812-N	1	2	2
5812-L	5812-NO	1	1	1	5808-L	5808-N	2	3	3
5811-L	5811-NY	1	1	1	Backing Fabric				
5809-L	5809-N	1	1	1	*5810-L	5810-N	3	6	8
					<i>*Yardage needed for backing (4 yards per kit)</i>				



5806-N



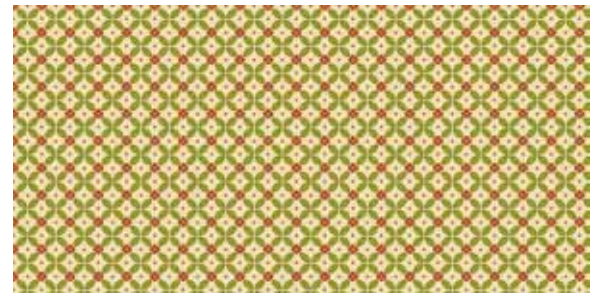
5808-N



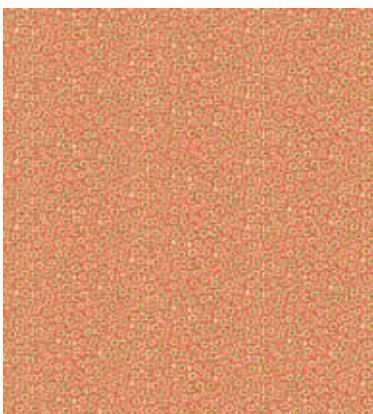
5807-N



5809-N



5810-N



5811-N



5811-NY



5812-NO



5812-N