

Matilda



makower uk®

1384 Broadway
New York, NY 10018
(800) 223-5678
www.andoverfabrics.com

Quilt designed by
Janet Houts
Finished size: 44" x 50"



Fabrics by
Cosmo Cricket™

Matilda

Fabrics by Cosmo Cricket™

Fabrics shown are 20% of actual size.
Fabrics used in featured quilt pattern are indicated in red

Andover
Fabrics™
makower uk®



5407-G 1 yd



5408-P ¼ yd



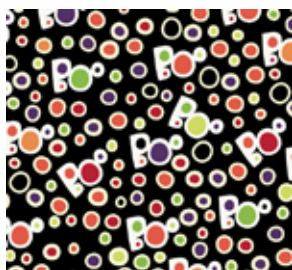
*5409-L ½ yd (extra yardage needed for backing)



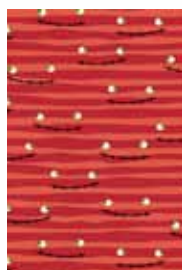
1867-WW ¼ yd



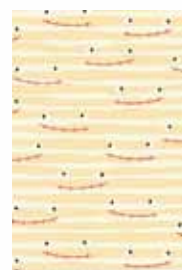
1867-G ½ yd



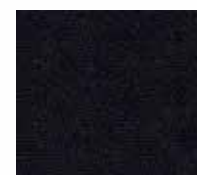
5410-K ¼ yd



5411-O ¾ yd



5411-L



1867-K ¾ yd (includes binding)



5407-K



5408-K



5409-K



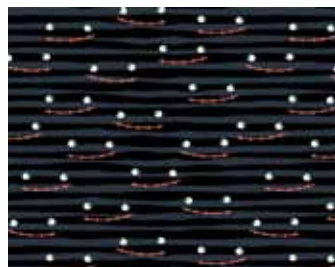
1867-E ⅛ yd



1867-O9



5410-O



5411-K



1867-P2

Bolts needed to cut project kits									
Green	Black	10 kits	20 kits	30 kits	Green	Black	10 kits	20 kits	30 kits
5407-G	5407-K	1	2	2	1867-K	1867-O9	1	1	2
5408-P	5408-K	1	1	1	1867-WW	1867-WW	1	1	1
*5409-L	5409-K	1	1	1	1867-E	1867-E	1	1	1
5410-K	5410-O	1	1	1	Backing Fabric				
5411-O	5411-K	1	1	2	*5409-L	5409-K	2	4	6
1867-G	1867-P2	1	1	1	*Yardage needed for backing (3 yards per kit)				