

# Reverie

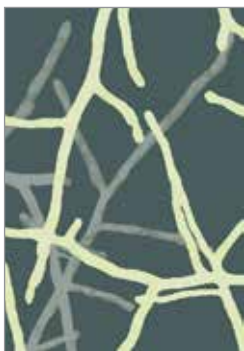
FABRICS BY LORI MASON



Quilt designed by **Tiffany Hayes**

Quilt Size: **69¼" x 89¾"**

**andoverfabrics.com**



## About Reverie

The inspiration for Reverie came from an exquisite walk in the snowy woods of Oregon. It had just snowed over a foot of powder, and both the dormant and the evergreen flora were poking up out of snow. I photographed and sketched the elements as I traveled down an untracked path. The still, floaty quality of the experience felt very dreamy, hence the title of the collection, Reverie. — *Lori Mason*

andover



makower uk  
*The Henley Studio*

Free Pattern Download Available

1384 Broadway New York, NY 10018  
Tel. (800) 223-5678 • [andoverfabrics.com](http://andoverfabrics.com)





7703-C



7703-K 2½ yds



7704-CL



7704-KL 5½ yds (backing)



7705-C



7705-KR



7706-C



7706-K ¾ yd



7707-CG



7707-K ¾ yd



7708-C



7708-K 1 yd

FABRIC	5 KITS	10 KITS	20 KITS
7703-K	1	2	4
7706-K	1	1	1
7707-K	1	1	1
7708-K	1	1	2
3135-RN	1	2	3
A-T-TAPIOCA	1	1	2

#### BACKING

7704-KL	2	4	8
---------	---	---	---

Yardage needed for backing:  
5½ YDS per kit

Bolts needed to cut project kits.  
15 yds = 1 bolt

Fabrics shown are 25% of actual size.

Fabrics used in quilt pattern are shown in black.

#### Blend with Andover's Dimples



3135-LG

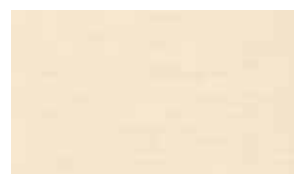


3135-RN 2½ yds  
(includes binding)

#### Blend with Andover's Textured Solids



A-T-Sandstone



A-T-Tapioca 1½ yds

# Reverie

FABRICS BY LORI MASON

andover : makower uk  
The Henley Studio

7/31/14