

Southcott

FABRICS BY KATHY HALL

FOR WINTERTHUR MUSEUM AND COUNTRY ESTATES



Joanna Southcott Quilt

Quilt Replica Designed
by: **Jean Ann Wright**

Quilt Size: **94" x 94"**

andoverfabrics.com



About Southcott — Joanna Southcott Quilt

In the early 20th century, Henry Francis du Pont created a grand country place at Winterthur that today encompasses a 175-room house, a 60-acre naturalistic garden, and 1,000 acres of woodland and meadows.

The Winterthur collection includes glorious textiles from both Europe and America. The original quilt was made in 1808, probably in support of the millennial preacher Joanna Southcott, whose name along with the date 1808 is embroidered in the center. It is pieced from a variety of the most fashionable printed furnishing cottons of that period.

With their close attention to detail, Andover Fabrics designs are certain to become an important part of today's living environments that emphasize unparalleled quality and beauty.

© Winterthur 2013

andover

•
•
makower uk
The Henley Studio

Free Pattern Download Available

1384 Broadway New York, NY 10018

Tel. (800) 223-5678 • andoverfabrics.com



7536-R 1 panel ($\frac{2}{3}$ yd)



7537-B Fat $\frac{1}{4}$ yd



*7538-N Fat $\frac{1}{4}$ yd
(extra yds needed
for backing)



7539-K $\frac{1}{2}$ yd



7540-LN $\frac{1}{2}$ yd



7537-G Fat $\frac{1}{4}$ yd



7538-R Fat $\frac{1}{4}$ yd



7539-R Fat $\frac{1}{4}$ yd



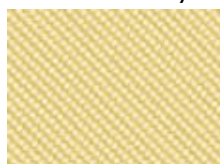
7540-N $\frac{3}{4}$ yd



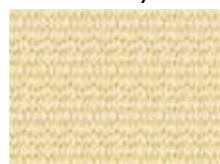
7537-Y Fat $\frac{1}{4}$ yd



7538-Y Fat $\frac{1}{4}$ yd



7539-Y $\frac{1}{2}$ yd



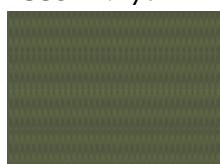
7540-Y $\frac{1}{2}$ yd



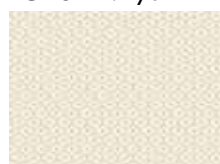
7541-B $\frac{1}{2}$ yd



7542-B $\frac{1}{2}$ yd



7543-G Fat $\frac{1}{4}$ yd



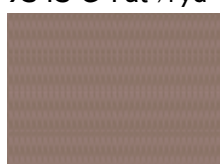
7544-LB $\frac{1}{2}$ yd



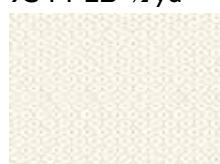
7541-G Fat $\frac{1}{4}$ yd



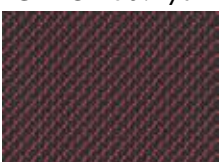
7542-E $\frac{1}{2}$ yd



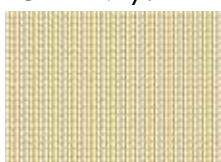
7543-P Fat $\frac{1}{4}$ yd



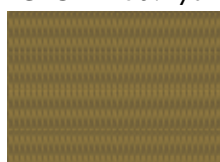
7544-LN 1 yd



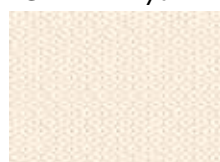
7541-R 1 yd



7542-Y $\frac{1}{2}$ yd



7543-Y Fat $\frac{1}{4}$ yd



7544-LR $\frac{1}{2}$ yd

FABRICS 5 KITS 10 KITS 20 KITS

7544-LN 1 1 2

2474-R 1 1 2

7541-R 1 1 2

FOR EACH 1 1 1

7536-R 7537-B 7537-G 7537-Y

*7538-N 7538-R 7538-Y 7539-K

7539-R 7539-Y 7540-LN 7540-N

7540-Y 7541-B 7541-G 7542-B

7542-E 7542-Y 7543-G 7543-P

7543-Y 7544-LB 7544-LR 3985-N

3996-O 5322-B 5322-G 5322-R

5534-B 5538-R 5539-G 5540-B

BACKING FABRIC

*7538-N 3 6 12

YARDAGE FOR BACKING:
8 $\frac{3}{4}$ YDS PER KIT

Fabrics shown are 15% of actual size.
All fabrics are used in quilt pattern.

Blend with
fabrics from
Elizabethtown
by Jo Morton



5322-B Fat $\frac{1}{4}$ yd



5322-G Fat $\frac{1}{4}$ yd



5322-R Fat $\frac{1}{4}$ yd



5534-B Fat $\frac{1}{4}$ yd



5538-R $\frac{1}{4}$ yd



5539-G $\frac{1}{2}$ yd



5540-B Fat $\frac{1}{4}$ yd

Blend with
fabrics from
Jo's Best Friends
by Jo Morton



3996-O Fat $\frac{1}{4}$ yd



3985-N $\frac{3}{4}$ yd



2474-R 1 yd
(includes binding)

Southcott

FABRICS BY KATHY HALL

FOR WINTERTHUR MUSEUM AND COUNTRY ESTATES

andover

makower uk
The Hanley Studio