

Sweet Emilie

Fabrics by Jo Morton



makower uk

1384 Broadway
New York, NY 10018
(800) 223-5678

www.andoverfabrics.com

Quilt designed and made by Candy Hargrove

Machine quilted by Maggi Honeyman

Finished size: 60" x 66"

Sweet Emilie

Fabrics by Jo Morton

Fabrics shown are 50% of actual size.

All fabrics used in quilt pattern.



*5321-L 1 3/4 yds



5321-N Fat 1/4 yd



5320-L Fat 1/4 yd



5320-N Fat 1/4 yd



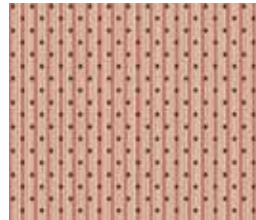
5332-N Fat 1/4 yd



5322-L Fat 1/4 yd



5322-N Fat 1/4 yd



5329-E Fat 1/4 yd



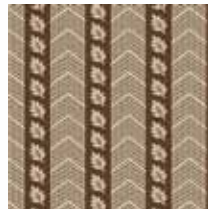
5329-Y Fat 1/4 yd



5329-B Fat 1/4 yd



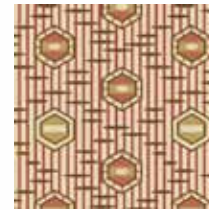
5323-B Fat 1/4 yd



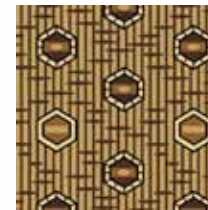
5323-N Fat 1/4 yd



5324-B Fat 1/4 yd



5324-E Fat 1/4 yd



5324-N Fat 1/4 yd



5324-W Fat 1/4 yd



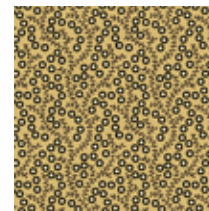
5325-LB Fat 1/4 yd



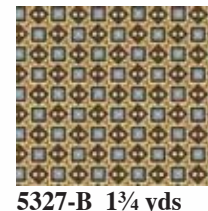
5325-N Fat 1/4 yd



5326-E Fat 1/4 yd



5326-L Fat 1/4 yd



5327-B 1 3/4 yds
(includes binding)



5327-N Fat 1/4 yd



5330-L 4 yds
(backing)



5330-N Fat 1/4 yd



5331-L Fat 1/4 yd



5331-N Fat 1/4 yd



5328-N Fat 1/4 yd



5328-Y Fat 1/4 yd



3994-LO Fat 1/4 yd



5204-NN Fat 1/4 yd



5318-E Fat 1/4 yd

Bolts needed to cut project kits

Fabric	10 kits	20 kits	30 kits
5321-L	2	3	4
5327-B	2	3	4

28 Prints (each) 1 1 1

Backing Fabric

*5330-L	3	6	9
---------	---	---	---

*Yardage needed for backing (4 yards per kit)

*Andover
Fabrics™*
makower uk®

1384 Broadway
New York, NY 10018
(800) 223-5678
www.andoverfabrics.com