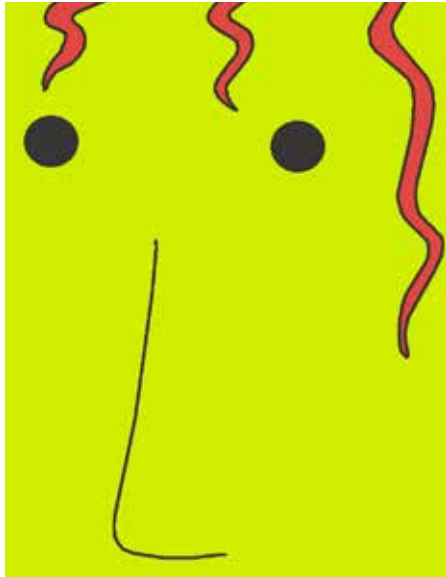


# Wicked

FABRICS BY KIM SCHAEFER



## About Wicked

Wicked is a whimsical, contemporary folk art collection inspired by Halloween. Pumpkins, witches, bats and spider motifs are sure to create some Wicked fun. Happy Halloween!

— Kim Schaefer

Quilt Designs: **Kim Schaefer**

Pumpkin Quilt Size: **32" x 41"**

Witch Quilt Size: **30" x 39"**

[andoverfabrics.com](http://andoverfabrics.com)

andover

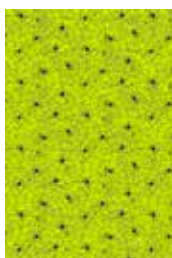
•  
•  
•  
•  
makower uk  
*The Henley Studio*

Free Pattern Download Available

1384 Broadway New York, NY 10018  
Tel. (800) 223-5678 • [andoverfabrics.com](http://andoverfabrics.com)



7447-K 1 panel ( $\frac{2}{3}$  yd)



7450-KG



7450-KO



7450-KP



7451-K



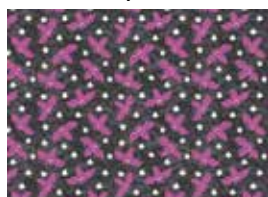
7451-KO



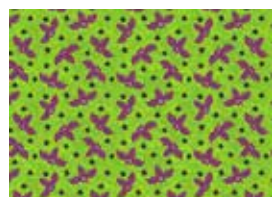
7451-KP



7448-K 1 yd



7449-K 1 yd  
(Witch backing)



7449-KG



7449-KO 1 yd  
(Pumpkin backing)

FABRICS	5 KITS	10 KITS	20 KITS
7447-K	1	1	1
7448-K	1	1	2
3135-G2	1	1	1
3135-P4	1	1	1
3135-K (binding and borders for one quilt)	1	1	1
<b>COST</b>	<b>\$413</b>	<b>\$413</b>	<b>\$495</b>

#### IF MAKING BOTH QUILTS:

**3135-K (binding and borders for two quilts)	1	1	2
<b>COST</b>	<b>\$495</b>	<b>\$495</b>	<b>\$660</b>

#### BACKING

7449-K (backing fabric for Witch quilt)	1	1	2
7449-KO (backing fabric for Pumpkin quilt)	1	1	2

<b>COST</b>	<b>\$82.50</b>	<b>\$82.50</b>	<b>\$165</b>
-------------	----------------	----------------	--------------

#### YARDAGE FOR BACKING: 1 YD PER KIT

**\*\*NOTE:** All yardages are sufficient for making one or both Pumpkin and Witch quilts, except where noted.

Fabrics shown are 10% of actual size.  
Fabrics used in quilt pattern are shown in black.

Blend with fabrics from  
TIC TAC by Kim Schaefer



3135-G2  $\frac{1}{4}$  yd



3135-P4  $\frac{1}{4}$  yd



3135-O4



3135-K  $\frac{3}{4}$  yard  
(binding and borders  
for one quilt)  
\*\* $1\frac{1}{2}$  yds (binding and  
borders for two)

# Wicked

FABRICS BY KIM SCHAEFER

andover : makower uk  
The Henley Studio