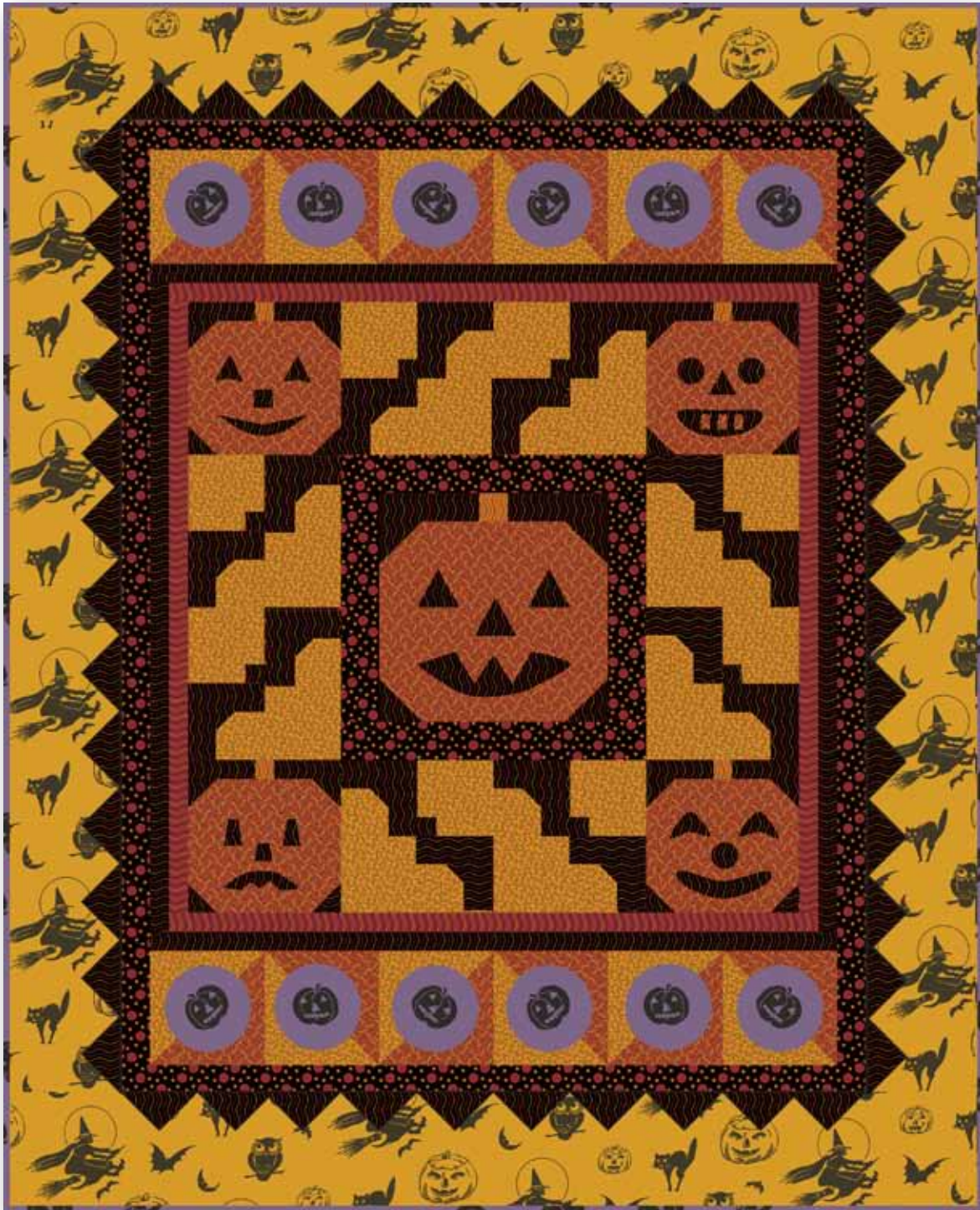


# All Hallow's Eve



*Fabrics by* Renée Nanneman



**makower uk**

1384 Broadway  
New York, NY 10018  
(800) 223-5678  
[www.andoverfabrics.com](http://www.andoverfabrics.com)

Quilt designed by Jean Ann Wright

Finished size: 51" x 63"

12/26/11

# All Hallow's Eve Quilt

Introducing Andover Fabrics new collection: All Hallow's Eve by Renée Nanneman  
Quilt designed by Jean Ann Wright

Quilt finishes 51" x 63"  
1 Large Pumpkin Block: 12" x 12"  
4 Small Pumpkin Blocks: 8" x 8"  
8 Bat Blocks: 8" x 8"  
12 Border Blocks: 6" x 6"

*Have a howling good time when you make this spooky quilt for your favorite goblin. Easy piecing methods make quick work of all the blocks. Fused pumpkin faces can be altered to make them goofy or scary. Novelty prints are used to their best advantage to add special Halloween appeal to the quilt.*

## Cutting Directions

**Note:** All measurements are cut sizes and include 1/4" seam allowances. Borders are cut the exact lengths required plus 1/4" seam allowances. WOF designates width of fabric from selvedge to selvedge (approximately 42").

**Fabric A** Cut (2) borders 6 1/2" x 51 1/2", cut lengthwise  
Cut (2) strips 6 1/2" x WOF (see Step 10)  
Cut additional crosswise strips 6 1/2" wide as needed  
(see Step 10)

**Fabric B** Cut (6) strips 2 1/2" x WOF for binding  
Fussy-cut (12) circles with 4 1/2" diameter

**Fabric C** Cut (5) strips 2" x WOF, pieced to make the following:  
2 borders 2" x 48 1/2"  
2 borders 2" x 39 1/2"  
Cut (2) strips 2 1/2" x 16 1/2"  
Cut (2) strips 2 1/2" x 12 1/2"

**Fabric D** Cut (1) square 2" for large pumpkin stem  
Cut (4) squares 1 1/2" for small stems

**Fabric E** Cut (2) borders 1 1/2" x 36 1/2", cut crosswise  
Cut (2) borders 1 1/2" x 34 1/2", cut crosswise  
Cut (62) squares 4 1/2" x 4 1/2"  
Cut (2) rectangles 2" x 5 3/4"  
Cut (4) squares 3" x 3"  
Cut (32) rectangles 2" x 3"  
Cut (16) squares 2" x 2"  
Cut (8) squares 1 1/2" x 1 1/2"  
Cut (8) rectangles 1 1/2" x 4"  
Cut (5) pumpkin faces

**Fabric F** Cut (2) borders 1 1/2" x 34 1/2", cut crosswise  
Cut (2) borders 1 1/2" x 32 1/2", cut crosswise

## Fabric Requirements

	Yardage		
<b>Fabric A</b>	outer border	2 yards	5704-Y
<b>Fabric B</b>	blocks, binding	1 yard	5705-P
<b>Fabric C</b>	borders	1/2 yard	5706-R
<b>Fabric D</b>	pumpkin stems	*1/8 yard	5707-O
<b>Fabric E</b>	blocks, border	1 3/4 yards	5707-K
<b>Fabric F</b>	border	1/4 yard	5707-R
<b>Fabric G</b>	blocks	3/4 yard	5708-Y
<b>Fabric H</b>	blocks, pumpkins	1 yard	5708-O
<b>Backing (D)</b>		3 3/8 yards	5707-O
<b>*or 6" square</b>			

**Fabric G** Cut (6) squares 6 7/8" x 6 7/8"  
Cut (8) squares 4 1/2" x 4 1/2"  
Cut (8) squares 3 1/2" x 3 1/2"  
Cut (16) squares 3" x 3"  
Cut (16) rectangles 1 1/2" x 3 1/2"

**Fabric H** Cut 1 square 11" x 12 1/2"  
Cut (4) rectangles 8 1/2" x 7 1/2"  
Cut (6) squares 6 7/8" x 6 7/8"

**Backing (D)** Cut (2) panels 36" x 59", pieced  
to fit quilt top with overlap on all sides

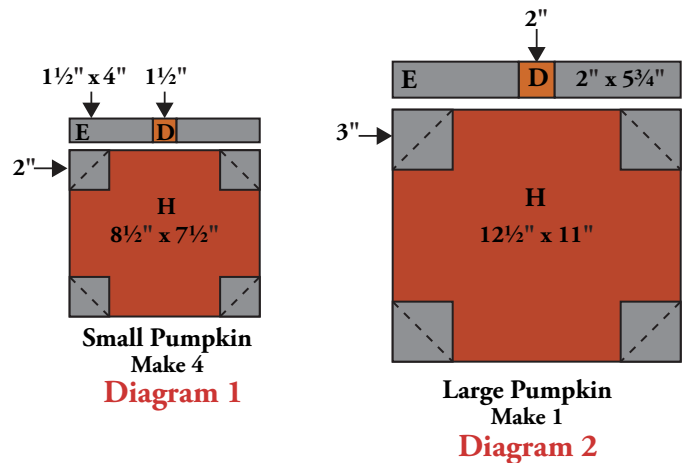
## Making the Quilt

**1. Small Pumpkin Blocks:** Parts of the blocks are made with quick stitch-and-flip piecing methods. Refer to Diagram 1. Draw a line on the wrong side of each Fabric E 2" square. Place a marked square on a Fabric H 8 1/2" x 7 1/2" rectangle, right sides together, aligning raw edges at one corner. Stitch on drawn line; trim away and discard excess fabric. Press open. Repeat on each corner of the rectangle, watching orientation of the sewing line. Make 4 pumpkin units like this.

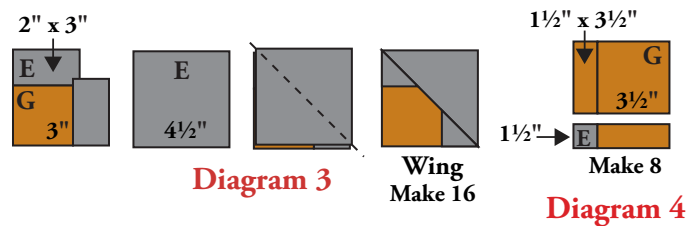
Sew a Fabric E 1 1/2" x 4" strip on opposite sides of a Fabric D 1 1/2" square. Repeat to make 4 stem units. Sew a stem unit to the top of each pumpkin unit to make 4 blocks. Cut the pumpkin face patches from Fabric E, orienting the stripes as you wish, or design your own faces, mixing and matching templates as desired. Fuse the face patches to the pumpkins. Finish the edges with a machine blanket stitch using black thread, or use an invisible thread with a blind appliqué machine stitch. Make 4 Small Pumpkin Blocks.

# All Hallow's Eve Quilt

**2. Large Pumpkin Block:** Repeat Step 1 using Fabric E 3" squares and Fabric H 12½" x 11" patch to make the pumpkin unit (Diagram 2). Use a Fabric D 2" square and Fabric E 2" x 5¾" strips for the stem unit. Sew the stem unit to the pumpkin unit to make 1 block. Fuse and appliqué the pumpkin face in place.

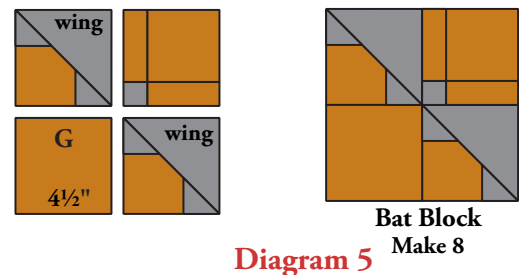


**3. Bat Blocks:** Refer to Diagram 3. Sew a Fabric E 2" x 3" strip to one side of a Fabric G 3" square. Press the seam allowance toward the E. Sew a second E strip to the adjacent side of the square. Press seam allowance toward the E. Do not trim the E's. Position a Fabric E 4½" square on top of the E/G unit, right sides together. Sew a diagonal line from corner to corner of the square E. Trim the excess and press the E triangle open. Make 16 wing units like this.

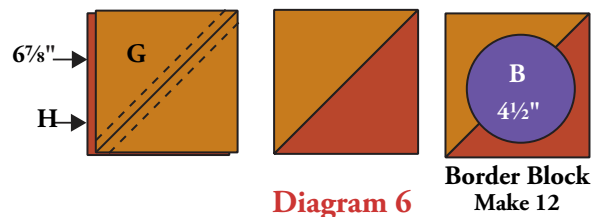


Sew a Fabric G 1½" x 3½" strip to one side of a Fabric E 1½" square (Diagram 4). Press seam allowance toward the E square. Set unit aside. Sew a Fabric G 1½" x 3½" strip to the side of a Fabric G 3½" square. Press seam allowance toward the G square. Sew the E/G strip to the G/G unit. Make 8 units like this.

Referring to Diagram 5, join the pieced units and a Fabric G 4½" square to make the bat. Make 8 Bat Blocks.



**4. Border Blocks:** Draw a diagonal line on the wrong side of each Fabric G 6⅞" square (Diagram 6). Place a marked square on a Fabric H square, right sides together. Sew ¼" seam on each side of the marked line; cut apart on the marked line. Press open to make pieced squares. Make 12 total.

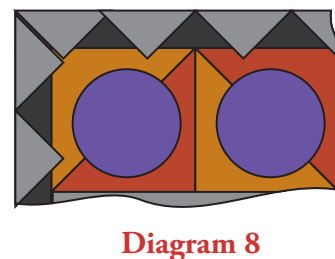


Following manufacturer's instructions, draw 4½"-diameter circles on fusible webbing. Cut circles out, leaving a bit of the paper around the edge of the circle. Press the circles to the wrong side of Fabric B, placing them so that a printed pumpkin is centered in each circle. Cut circles on the drawn lines. Referring to the Quilt Diagram, note that every other G/H square is rotated so that the printed pumpkins on the circles are upright when pieced into the quilt. Be careful that you follow the design carefully. Center and fuse a circle to each G/H square, following manufacturer's instructions. Feel free to rotate the printed pumpkins on the squares. Finish the edges as you did the pumpkin faces. Make 12 Border Blocks.



**5.** Refer to the Quilt Diagram for the remaining steps. Sew the Fabric C 12½" strips to the sides of the large pumpkin. Sew 16½" strips to the top and bottom. Set aside.

Join 2 small pumpkins and 2 bats to make the top horizontal row, noting the rotation of the bats. Repeat to make the bottom row. Sew 2 bats together vertically. Repeat, again noting orientation of the bats. Sew the large pumpkin between the vertical bat strips. Sew the horizontal rows to the top and to the bottom.



# All Hallow's Eve Quilt

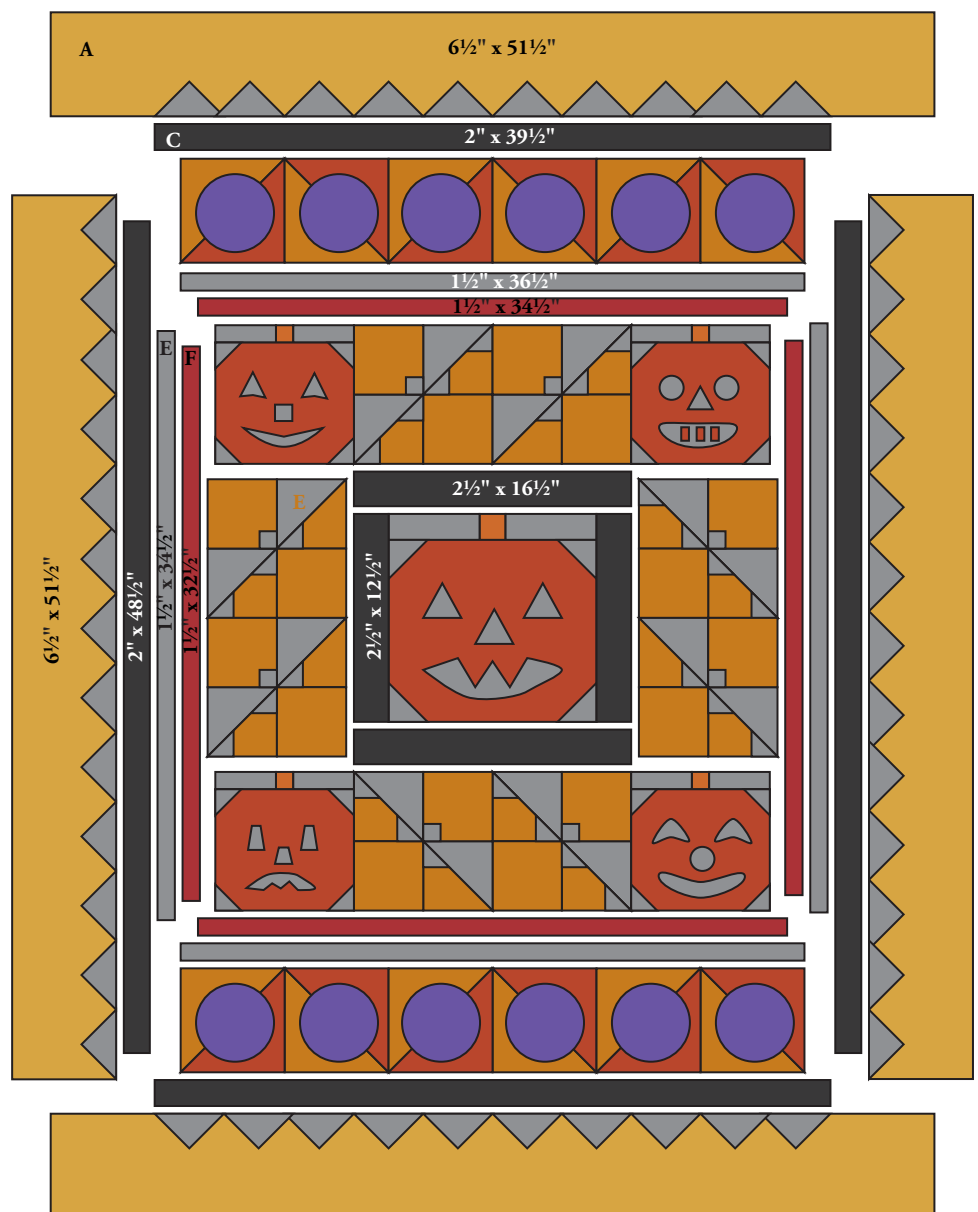
6. Sew short Fabric F borders to the sides and long Fabric F borders to the top and bottom. Likewise, sew the Fabric E borders to the quilt in the same order.
7. Join 6 Border Blocks in a horizontal row, rotating them as shown. Sew the row to the top of the quilt. Repeat for the bottom.
8. Sew Fabric C  $48\frac{1}{2}$ " borders to the sides. Sew  $39\frac{1}{2}$ " borders to the top.
9. Prairie Points: Fold each Fabric E  $4\frac{1}{2}$ " square in half (Diagram 7). Fold down one corner and press. Fold down the second corner and press. Make 46. With the right side down (the side where the folds show), position 13 Prairie Points on a side of the quilt, raw edges even with the raw edge of the black border strip. The Prairie Points overlap slightly to fill the space evenly. Repeat for the opposite side. Position 10 Prairie Points on the top and 10 on the bottom, overlapping as needed to fill the space evenly. Prairie Points should meet in the corners (Diagram 8). Machine baste the Prairie Points near the outer edge to keep them in place.
10. Note that the print in the Fabric A borders remains upright in the quilt. To duplicate this in your quilt, first cut the  $6\frac{1}{2}$ " x  $51\frac{1}{2}$ " side borders lengthwise on the Fabric A. Next, cut 2 border strips  $6\frac{1}{2}$ " by the width of the fabric (about 42"). These will be used for the top and bottom. To obtain the length needed for the top and bottom borders, from the remaining fabric cut  $6\frac{1}{2}$ "-wide strips as needed, cutting crosswise so that the print remains upright. Piece the shorter strips to the 42"-long strips, being careful to join them so that the print is not interrupted, to make 2 more borders  $6\frac{1}{2}$ " x  $51\frac{1}{2}$ ".

Sew the lengthwise Fabric A borders to the sides, catching the base of the Prairie Points in the seam. Sew the crosswise pieced borders to the top and bottom. Press the Fabric A border and Prairie Points away from the quilt. The base of the Prairie Points should be pressed toward the black borders.

## Finishing the Quilt

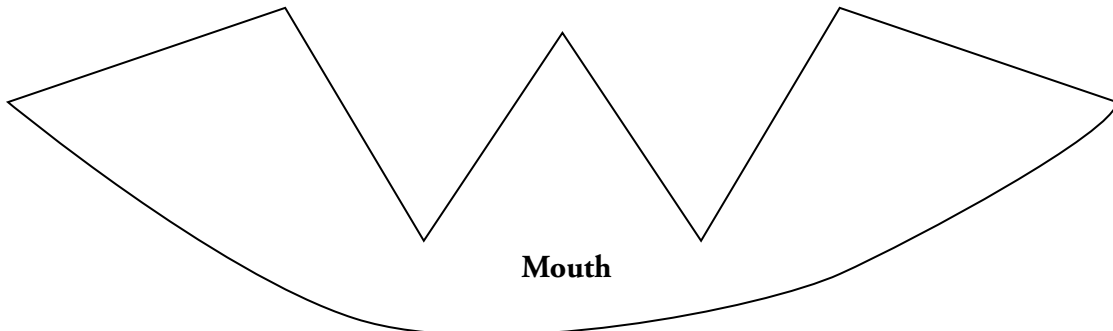
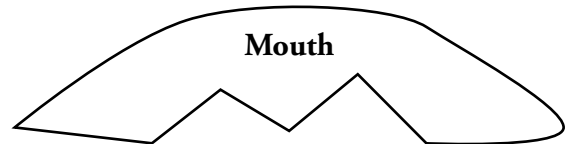
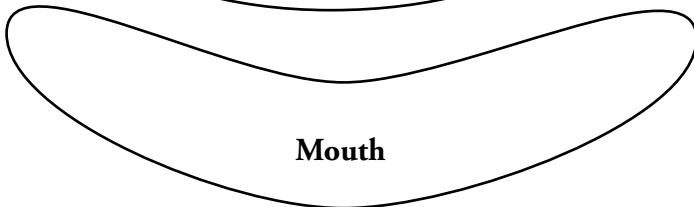
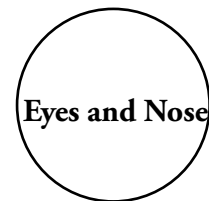
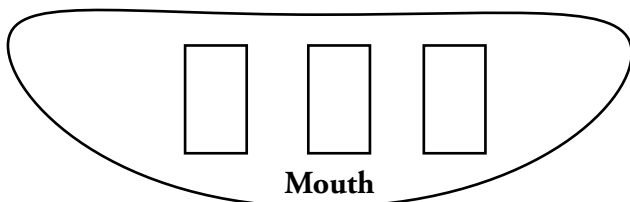
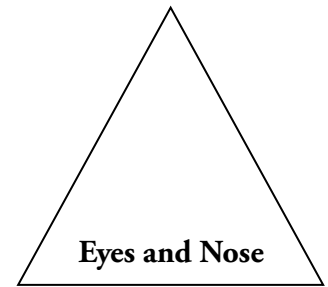
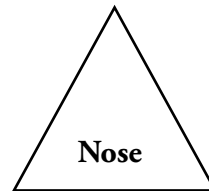
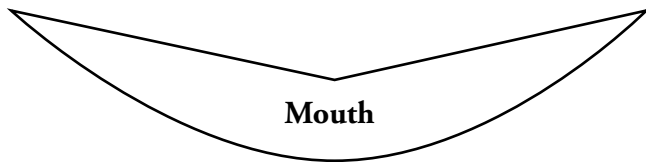
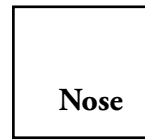
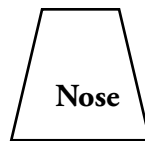
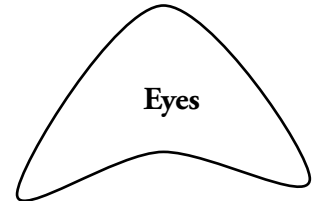
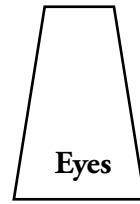
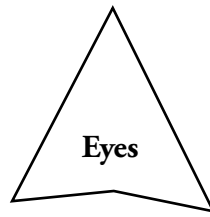
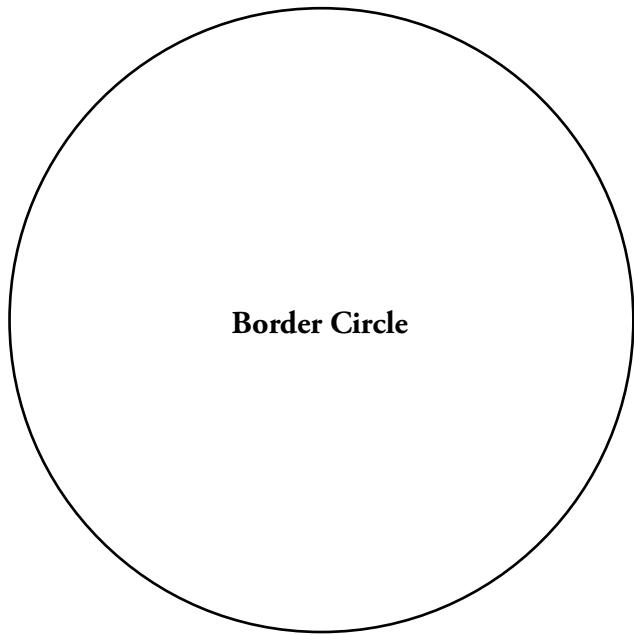
11. Layer the quilt with batting and backing and baste. Quilt in the ditch around borders and block patches. Quilt around the printed motifs in the blocks and outer border. Bind to finish the quilt.

**Note:** Read Steps 9 and 10 before adding the Prairie Points to the quilt.



Quilt Diagram

## Full Size Patterns



1384 Broadway  
New York, NY 10018  
(800) 223-5678  
www.andoverfabrics.com

# All Hallow's Eve

by Renée Nanneman

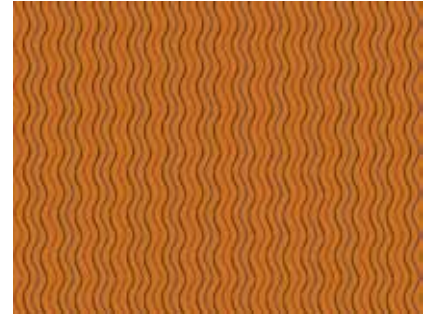
*Andover  
Fabrics™*  
**makower uk®**



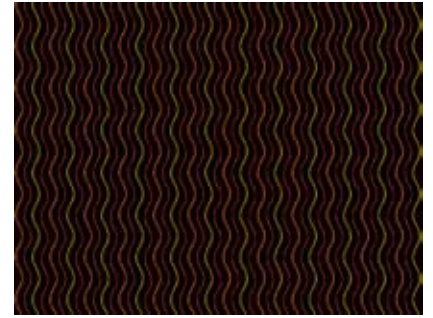
5704-0



5704-Y



5707-O



5707-K



5705-K



5705-0



5707-R



5705-OK



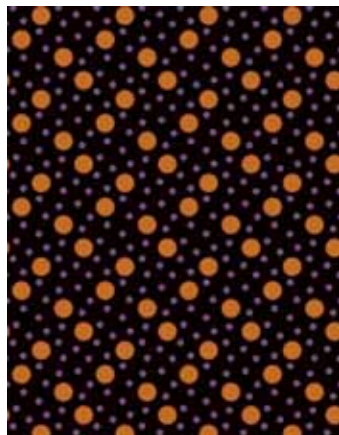
5705-P



5708-Y



5706-G



5706-O



5706-R



5708-0

\*Indicates fabric used in quilt pattern. Fabrics shown are 20% of actual size.

Free Pattern Download Available at [www.andoverfabrics.com](http://www.andoverfabrics.com)

12/26/11