

Arabesque



Finished size: 70" x 70"

Featuring the
Arabesque Collection
by Kathy Hall

Quilt designed & made by Davida J. Hyland
Machine quilted by Barbara Persing



makower uk[®]

1384 Broadway • New York, NY 10018
(800) 223-5678 • www.andoverfabrics.com

Arabesque Quilt

Introducing Andover Fabrics new collection: Arabesque by Kathy Hall

Quilt designed and made by Davida J. Hyland and machine quilted by Barbara Persing

Welcome!

Rich with detail, and warm in color, the fabrics in this quilt bring elegance to the traditional Ohio Star block. And, to make this quilt even more attractive, it can be made in a day! Smart piecing and large blocks combine for a wonderfully quick design.

This pattern calls for bias binding using a plaid print fabric for a stunning finish. Our cutting list gives you the correct square size for continuous bias techniques as well as number of inches needed. For help with continuous bias or traditional bias piecing, ask your favorite quilt store or check out the many online instructions.

Quilt finishes 70" x 70"
9 Ohio Star Blocks 15" x 15"

Fabric Requirements and Cutting Directions

1867-O10 $\frac{3}{4}$ yard Dark Orange Dimple Print (blocks, 3rd border)

- Cut (10) $6\frac{1}{4}$ " squares
- Cut (2) $1\frac{1}{2}$ " x 53" strips, pieced from 3 width of fabric strips
- Cut (2) $1\frac{1}{2}$ " x 55" strips, pieced from 3 width of fabric strips

1867-N1 $\frac{3}{4}$ yard Dark Brown Dimple Print (blocks, cornerstones, 2nd border)

- Cut (10) $6\frac{1}{4}$ " squares
- Cut (4) 2" squares
- Cut (2) $1\frac{1}{4}$ " x $51\frac{1}{2}$ " strips, pieced from 3 width of fabric strips
- Cut (2) $1\frac{1}{4}$ " x 53" strips, pieced from 3 width of fabric strips

1867-N $\frac{1}{2}$ yard Light Gold Dimple Print (blocks)

- Cut (8) $6\frac{1}{4}$ " squares

4084-MR $\frac{5}{8}$ yard Dark Brown/Multicolor Tiny Floral Spray Print (blocks)

- Cut (8) $6\frac{1}{4}$ " squares
- Cut (5) $5\frac{1}{2}$ " squares

4080-MR $2\frac{1}{2}$ yards Brown/Multicolor Large Paisley Tapestry Print (blocks, outer border)

- *Cut (2) 8" x 70" strips lengthwise
- *Cut (2) 8" x 55" strips lengthwise
- Cut (24) $5\frac{1}{2}$ " squares

4083-MR $\frac{5}{8}$ yard Brown/Gold/Turquoise Paisley Print (blocks)

- Cut (16) $5\frac{1}{2}$ " squares

4086-T $\frac{7}{8}$ yard Turquoise/Brown Small Print (sashing, inner border)

- Cut (12) 2" x $15\frac{1}{2}$ " strips
- Cut (2) 2" x $48\frac{1}{2}$ " strips, pieced from 3 width of fabric strips
- Cut (2) 2" x $51\frac{1}{2}$ " strips, pieced from 3 width of fabric strips

*Cut first.

Backing and Binding

4082-MR 4 yards Brown/Multicolor Paisley Tapestry Stripe (backing)

Cut and piece lengthwise to fit quilt top with 4" overlap on all sides.

4085-MR 1 yard Brown/Red Plaid Print (bias binding)

Cut (1) 33" square for continuous bias binding (a total of 300" of $2\frac{1}{2}$ -3"-wide binding is needed)

Making the Blocks and Pieced Border

1. Referring to Diagram A, draw 2 diagonal lines on wrong side of dark orange dimple $6\frac{1}{4}$ " square. Place marked square on dark brown $6\frac{1}{4}$ " square, right sides together, aligning raw edges. Sew $\frac{1}{4}$ " seam on each side of 1 marked line. Cut apart on unsewn line first and then on sewn line. Press open to make pieced triangles. Make 40. In same manner, stitch together light gold dimple and dark brown/multicolor floral spray print $6\frac{1}{4}$ " squares to make pieced triangles. Make 32.
2. Stitch pieced triangles together as shown (Diagram B) to make hourglass units. Make in fabrics and quantities shown.
3. Referring to Diagram C and watching orientation of hourglass units, sew 3 rows using 4 brown/multicolor large paisley tapestry print $5\frac{1}{2}$ " squares, 4 orange/brown hourglass units and 1 floral spray $5\frac{1}{2}$ " square. Stitch rows together to make Ohio Star Block A. Make 5. In same manner, sew 3 rows using brown/teal small paisley $5\frac{1}{2}$ " squares, 4 gold/spray hourglass units, and 1 large paisley tapestry print $5\frac{1}{2}$ " square. Stitch rows together to make Ohio Star Block B. Make 4.

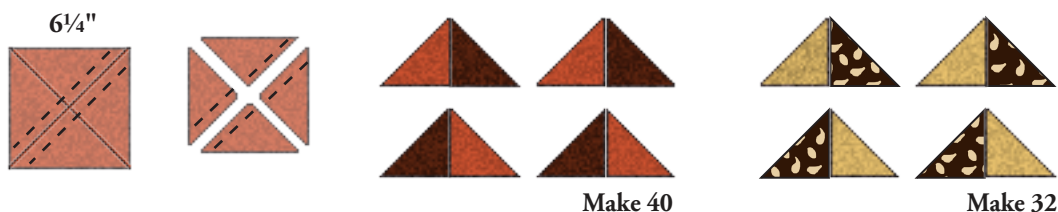


Diagram A

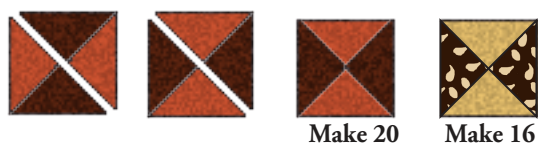


Diagram B

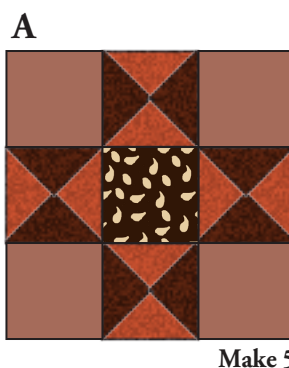
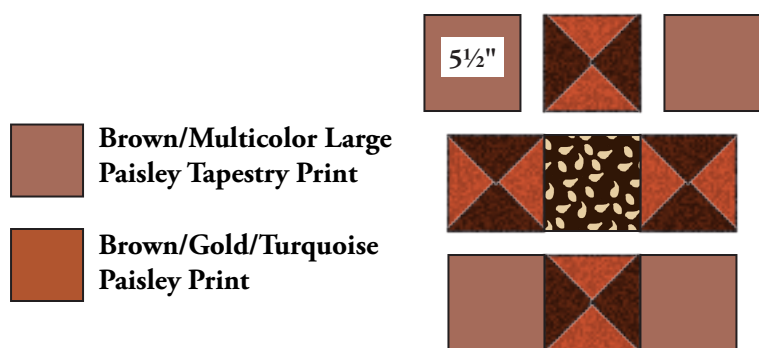
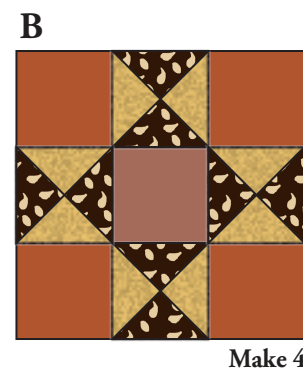


Diagram C



Make 4

Assembling the Quilt

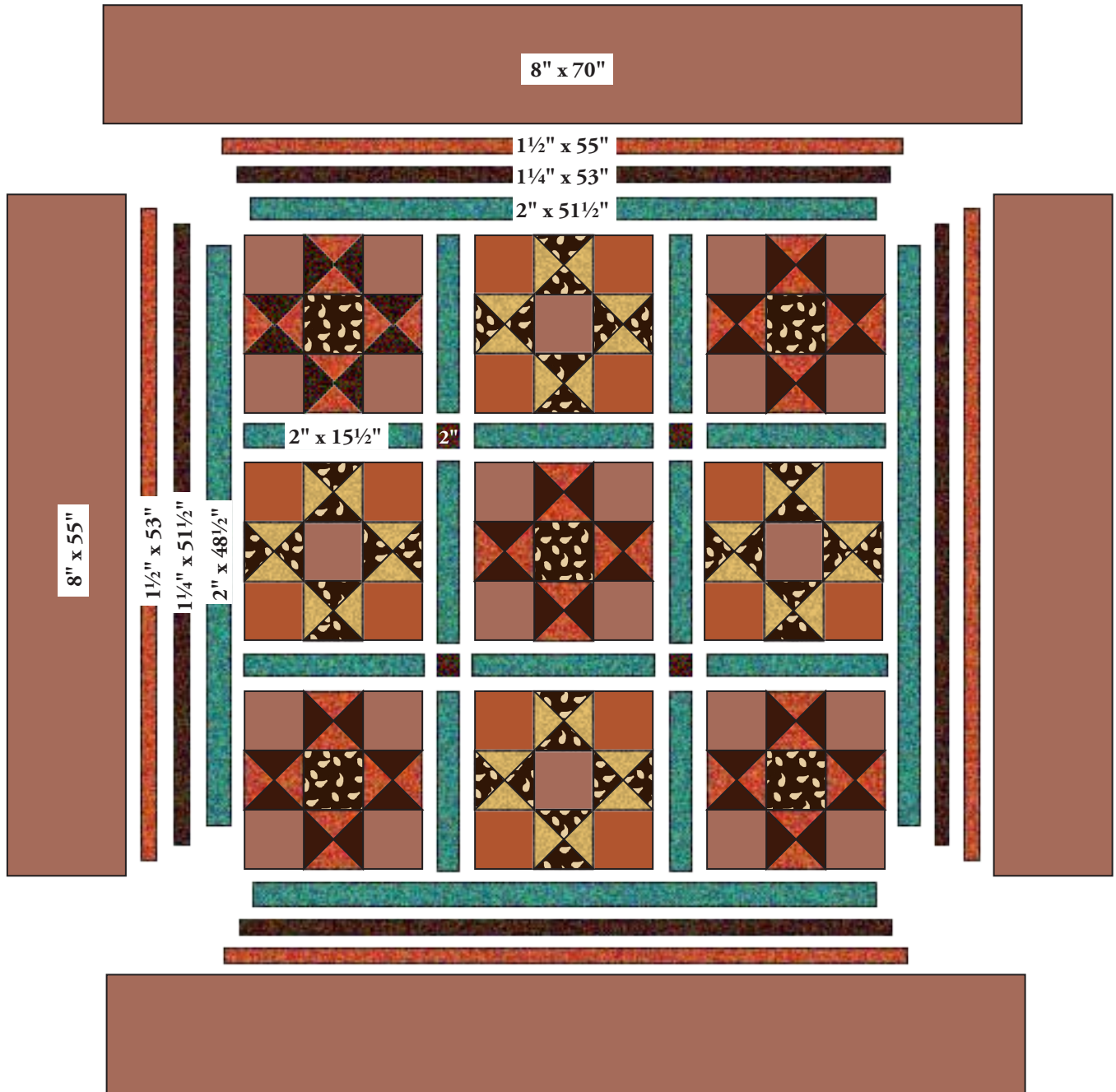
Note: Refer to Quilt Diagram and photo for following steps.

4. Stitch together 2 A blocks, 2 turquoise/brown small print $2" \times 15\frac{1}{2}"$ strips, and 1 B block to make top block row. Repeat to make bottom block row. In same manner, stitch together 2 B blocks, 2 turquoise/brown $15\frac{1}{2}"$ strips, and 1 A block to make middle block row.
5. Sew 3 turquoise $15\frac{1}{2}"$ strips and 2 dark brown dimple $2"$ squares together, alternating, to make sashing row. Make 2. Stitch block rows and sashing together, alternating, to make quilt center.
6. Sew turquoise $48\frac{1}{2}"$ strips to sides. Sew turquoise $51\frac{1}{2}"$ strips to top and bottom. Stitch dark brown dimple $51\frac{1}{2}"$ strips to sides. Sew brown $53"$ dimple strips to top and bottom. Sew dark orange dimple $53"$ strips to sides. Stitch orange dimple $55"$ strips to top and bottom. Lastly, stitch large paisley tapestry print $55"$ strips to sides and large paisley $70"$ strips to top and bottom.

Finishing the Quilt

7. Layer quilt with batting and brown/multicolor paisley tapestry stripe backing. Quilt as desired. Bind with bias-cut brown/red plaid print to finish quilt (see Welcome!).

Arabesque



Quilt Diagram

 Brown/Multicolor Large Paisley Tapestry Print

1384 Broadway
 New York, NY 10018
 (800) 223-5678
 www.andoverfabrics.com

Arabesque

by Kathy Hall



4080-MR*



4081-MR



4082-MR*



1867-N*



1867-N1*



4083-MR*



4084-MR*



4085-MR*



4086-T*



1867-O10*



4080-MK



4081-MK



4082-MK



1867-LN



1867-N13



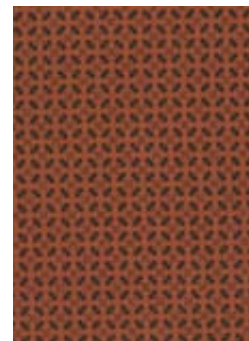
4083-MK



4084-MK



4085-MK



4086-R



1867-R3



1867-K3

*Indicates fabric used in quilt pattern. Fabrics shown are 30% of actual size.

Free Pattern Download Available at www.andoverfabrics.com