

Heaven 'n Earth Quilt



Finished size: 40½" x 57¼"

*Introducing
Andover Fabrics new collection:*

Blue Moon

Fabrics by Lonni Rossi

Quilt designed, made, and
machine quilted by Lonni Rossi



makower uk®

1384 Broadway · New York, NY 10018 · (800) 223-5678
www.andoverfabrics.com

Heaven 'n Earth Quilt

Introducing Andover Fabrics new collection: Blue Moon by Lonni Rossi

Quilt designed, made, and machine quilted by Lonni Rossi

Quilt finishes 40½" x 57¼"

Welcome

This dynamic wall hanging is a striking addition to any room. A departure from traditional quilts, yet made with familiar triangles and strips, this wall hanging design offers you the chance to play with color and arrange the triangles however you wish.

Notice that Lonni chose to have most of the medium and dark triangles pointing down, and most of the light triangles pointing up.

However, if you look closely you will see that many triangles don't adhere to this rule, making the wall hanging much more visually interesting. She also used the wrong side of some of her fabrics to get a lighter shade.

To cut the triangles, use the template provided or use any 60° ruler to cut triangles the same size as the template. Mark match points on all triangles as shown on template.

Fabric Requirements and Cutting Directions

1 fat ¼th each of 8 fabrics below. A fat ¼th is a 9" x 20-22" cut of fabric.

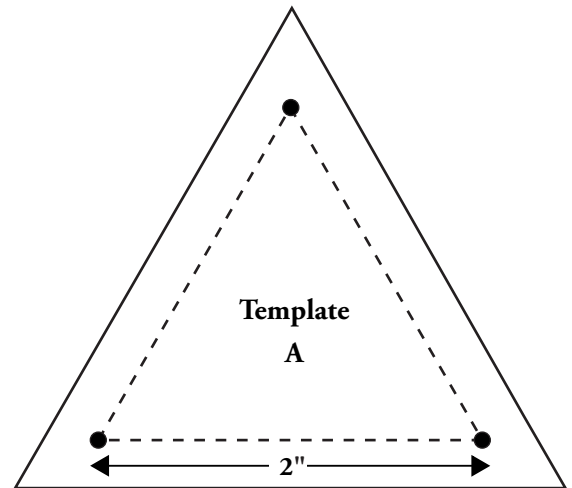
- | | |
|----------|---|
| 3374-T | Turquoise Ginkgo Leaves (triangles) |
| 3542-T | Aqua/Turquoise Texture (triangles) |
| *3572-MT | Mint/Cream Dappled Print (triangles) |
| 3547-MT | Turquoise/Blue Metallic Texture (triangles) |
| 3542-MG | Green/Olive Texture (triangles) |
| 3572-MG | Green/Turquoise Dappled Print (triangles) |
| 3541-MB | Blue/Cream Tendrils Print (triangles) |
| 3542-B | Blue/Navy Texture (triangles) |
- Cut (19) Template A from each fabric above.
- | | | |
|-----------|------------|---|
| *3548-MNL | 2⅞ yards | Gold Knotted Stripe (triangles, border) |
| **Cut (2) | 10½" x 40" | widthwise strips |
| **Cut (2) | 10½" x 44" | lengthwise strips |
| Cut (19) | | Template A |
- | | | |
|----------|-----------|---|
| 3541-MG | ½ yard | Lime Green Tendrils Print (triangles, strips) |
| Cut (19) | | Template A |
| Cut (12) | 2¼" x 10" | strips |
- | | | |
|----------|-----------|---|
| 3077-GL | 1 yard | Lime Green Petals Print (triangles, strips) |
| Cut (78) | | Template A |
| Cut (30) | 2¼" x 10" | strips |

*Additional fabric needed for binding or backing.

**Cut first.

3572-MT 2⅞ yards Mint/Cream Dappled Print (backing)
Cut and piece widthwise to fit quilt top with 4" overlap on all sides.

3548-MNL ¾ yard Gold Knotted Stripe (binding)
Cut (6) 2½" x width of fabric strips



When photocopying/printing, please be sure that the distance between match points is exactly 2 inches; adjust as needed.

Heaven 'n Earth

Piecing the Quilt Center

- Referring to Diagram A-1, align 60° line on rotary cutting ruler with long edge of strip and trim 1 end of lime green petals print 2¼" x 10" strip. Mark match points by drawing lines ¼" from edges of trimmed strip as shown. Match point is where lines intersect. In same manner, trim and mark lime green tendrils print strip. Notice that strips can be trimmed in 2 directions (Diagram A-2). We recommend that you trim strips for each row when assembling that row, as strips may need to be trimmed in different directions. Mark match points on all A triangles as shown on template.
- Aligning match points, stitch together 12 Template A triangles as shown in Diagram B. Stitch trimmed lime green petals print 2¼" x 10" strip to left side of triangle strip. Sew trimmed lime green tendrils print strip to right side of triangle strip. This is Row 1.
- Sew remaining 20 rows, using your color choice of triangles and strips, but using the number of triangles shown for each row in Diagram C.

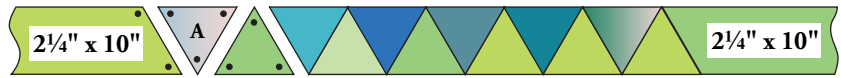
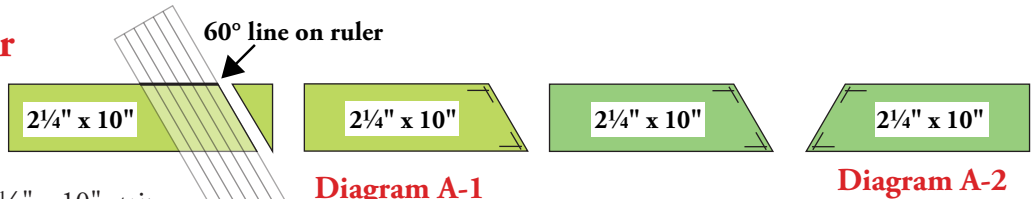


Diagram B

	# of triangles	
Row 1	12	
Row 2	13	
Row 3	11	
Row 4	11	
Row 5	15	
Row 6	14	
Row 7	14	
Row 8	13	
Row 9	13	
Row 10	12	
Row 11	12	
Row 12	12	
Row 13	13	
Row 14	11	
Row 15	8	
Row 16	15	
Row 17	12	
Row 18	15	
Row 19	15	
Row 20	13	
Row 21	14	

Diagram C

Assembling the Quilt Top

Note: Refer to Quilt Diagram and photo for following steps

- Notice that the triangles are lined up (stacked) in vertical rows in the wall hanging. In other words, if you were to draw a line through the point of each downward-facing triangle in a vertical row, they would connect in a straight line. Following the positioning shown in Diagram C, sew rows together, with each triangle placed in a direct line with triangle above or below.
- Referring to Diagram D, align ¼" line on rotary cutting ruler with corner of outermost triangles (all outermost triangles should be pointing up). Trim both sides, being sure that ruler is perpendicular to seams.

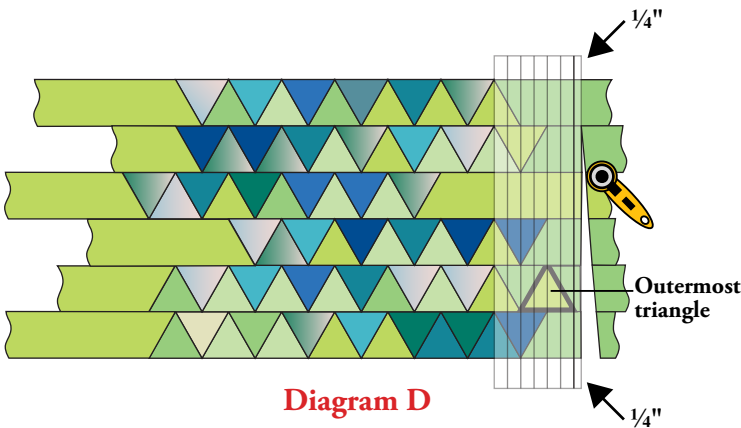


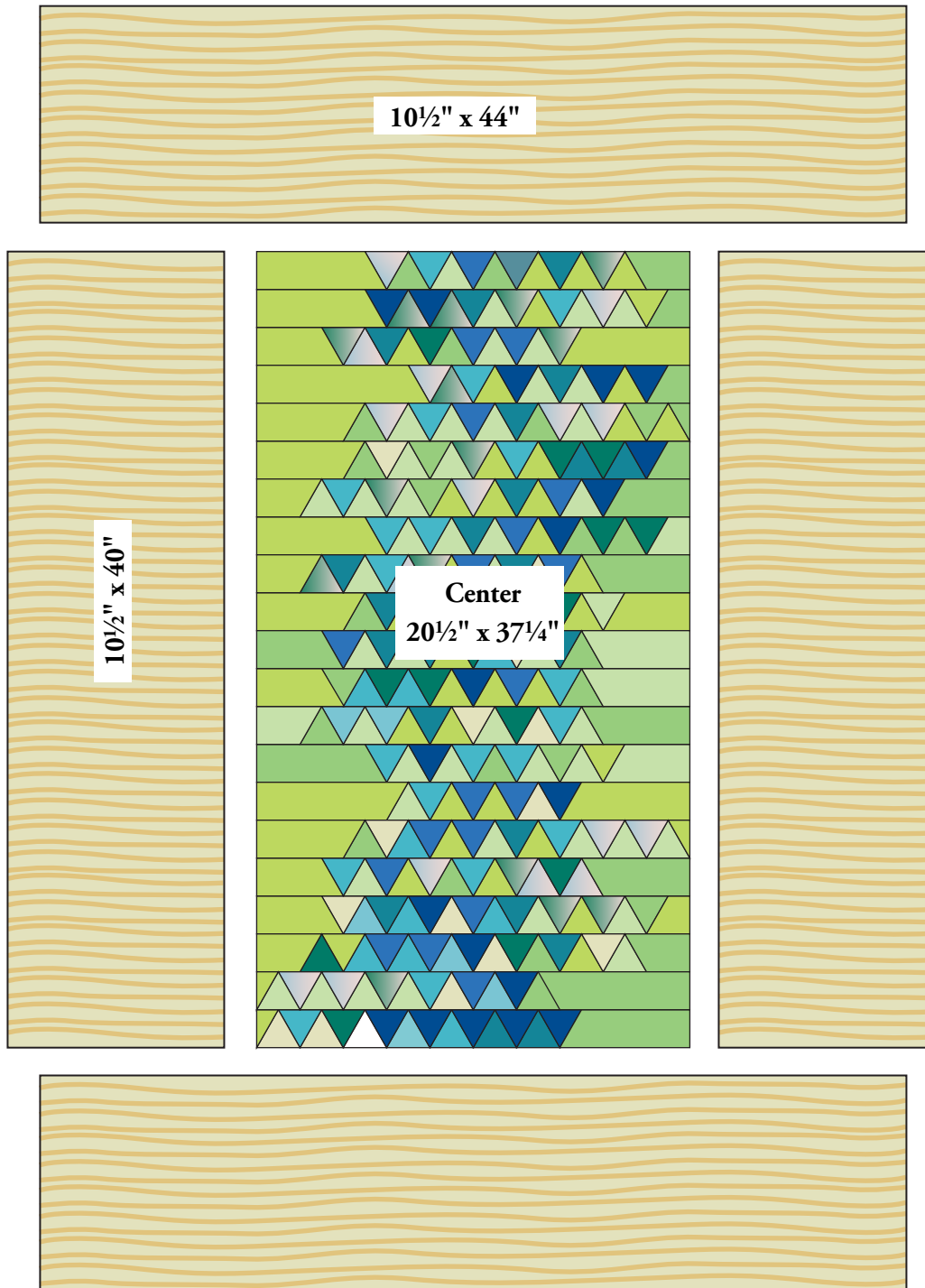
Diagram D

Heaven 'n Earth

- Center and stitch gold knotted stripe 40" wide to sides; trim even with quilt center. In same manner, stitch gold length of fabric strips to top and bottom; trim even with sides.

Finishing the Quilt

- Layer quilt with batting and mint/cream dappled print backing. Quilt as desired. Bind with gold knotted stripe to finish the quilt.



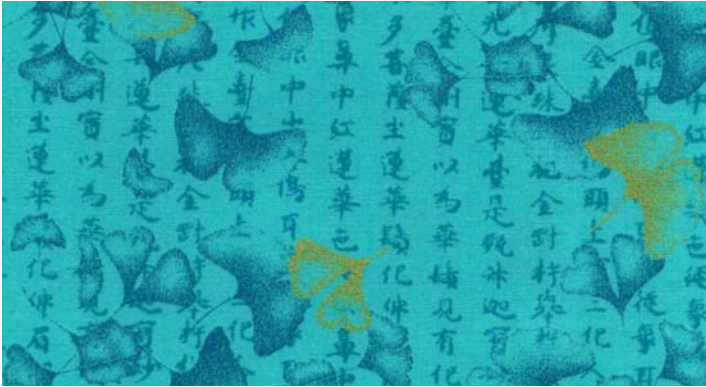
Quilt Diagram

1384 Broadway
New York, NY 10018
(800) 223-5678
www.andoverfabrics.com

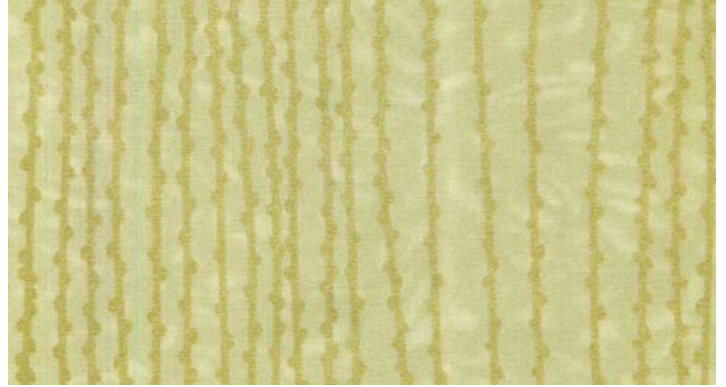
Blue Moon

by Lonni Rossi

Andover
Fabrics™
makower uk®



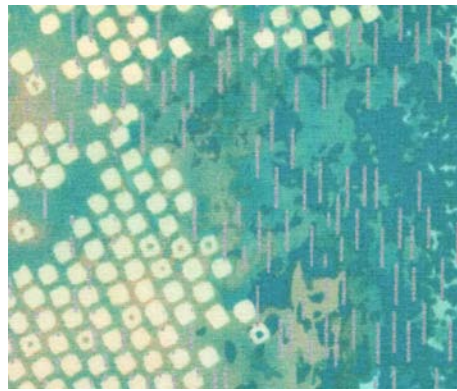
3374-T



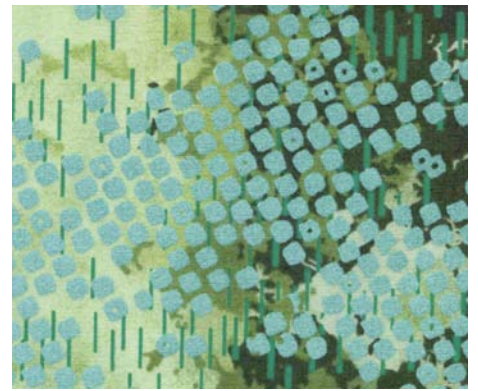
3548-MML



3542-T



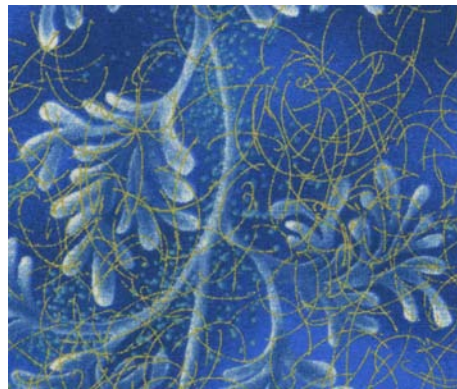
3572-MT



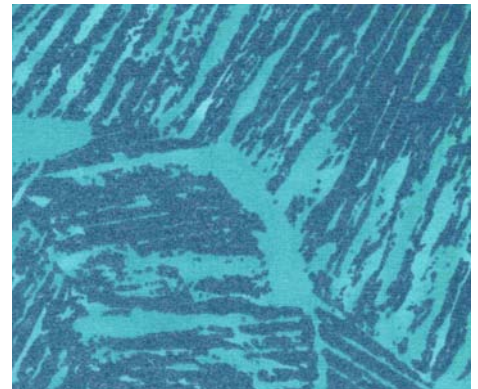
3572-MG



3542-B



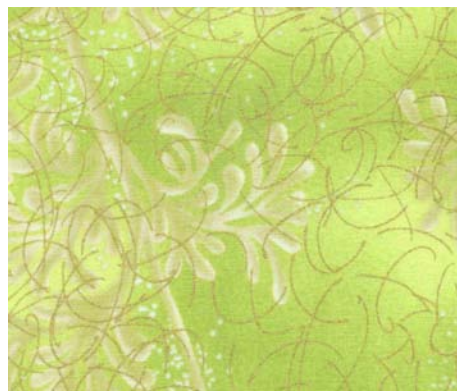
3541-MB



3547-MT



3542-M



3541-MG



3077-GL

All fabrics used in quilt pattern. Fabrics shown are 50% of actual size.

Free Pattern Download Available at www.andoverfabrics.com