

Bubble & Swirl



Fabrics by **Lonni Rossi**



makower uk

1384 Broadway
New York, NY 10018
(800) 223-5678

www.andoverfabrics.com

Quilt designed and made by Lonni Rossi

Quilted by Lisa Kaupp

Finished size: 66½" x 66½"

10/24/11

Bubble & Swirl Quilt

Introducing Andover Fabrics new collection: Bubble & Swirl by Lonni Rossi
Quilt designed and made by Lonni Rossi and quilted by Lisa Kaupp

Fabric Requirements

		Yardage	Fabric
Fabric A	border, binding	1 yard	5162-K
Fabric B	blocks	½ yard	5613-MO
Fabric C	border corners	¼ yard	5614-MN
Fabric D	border	2 yards	5611-MR
Fabric E	sashes	¾ yard	5468-O
Fabric D	backing	4¼ yards	5611-MR
6 Dots	blocks	½ yard each	5615-MB, 5615-MG, 5615-ML, 5615-MN, 5615-MR, 5615-MY

Quilt finishes 66½" x 66½"
9 Blocks: 12" x 12"

Unusual color combinations and exciting contemporary prints are Lonni Rossi's forte. The circle patches in this wall quilt reflect the dots and swirls in the fabrics. Fused appliqué and straightforward piecing allow a relative beginner to complete the quilt with ease.

Cutting Directions

Note: Borders are cut the exact lengths required plus ¼" seam allowances. WOF designates the width of fabric from selvedge to selvedge (approximately 42" wide).

Fabric A Cut (2) borders 1½" x 53", cut crosswise and pieced
Cut (2) borders 1½" x 51", cut crosswise and pieced
Cut (2) borders 1¼" x 39"
Cut (2) borders 1¼" x 37½"
Cut (7) strips 2½" x WOF for binding

Fabric B Cut (18) rectangles 3½" x 6½"

Fabric C Cut (4) squares 6½" x 6½"

Fabric D Cut (2) borders 7½" x 67", cut lengthwise
Cut (2) borders 7½" x 53", cut lengthwise

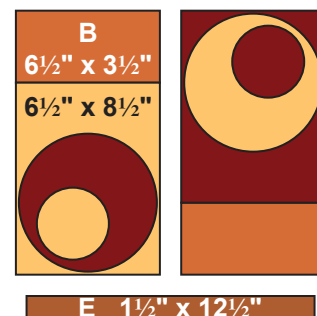
Fabric E Cut (1) strip 1½" x 25½"
Cut (13) strips 1½" x 12½"
Cut (44) rectangles 1½" x 6½"

6 Dots From each:
Cut (3) rectangles 6½" x 8½" (total of 18)
Cut (6-8) rectangles 3¼" x 6½" (total of 40)
Cut (3) circles with 5¾" diameter (total of 18)
Cut (3) circles with 3" diameter (total of 18)

Backing (D) Cut (2) panels 38" x 74", pieced to fit quilt top with overlap on all sides

Making and Assembling the Quilt

- Each of the 9 blocks is made with a "positive" and a "negative" unit made with a light and dark polka dot print of the same color family. Look at the Quilt Diagram for color positions. Note: The circles can be added to the background patches before or after the patches are joined to make the block. Sew a Fabric B rectangle to one end of each 6½" x 8½" polka dot rectangle. Press the seam allowance toward Fabric B. Repeat with all polka dot rectangles. Sew a positive and a negative unit of the same color family together, rotating one of the units as shown. Referring to the Block Diagram, sew a Fabric E 1½" x 12½" strip to one end to make a block that is 12½" x 12½". Make 9.



Block Diagram
Make 9

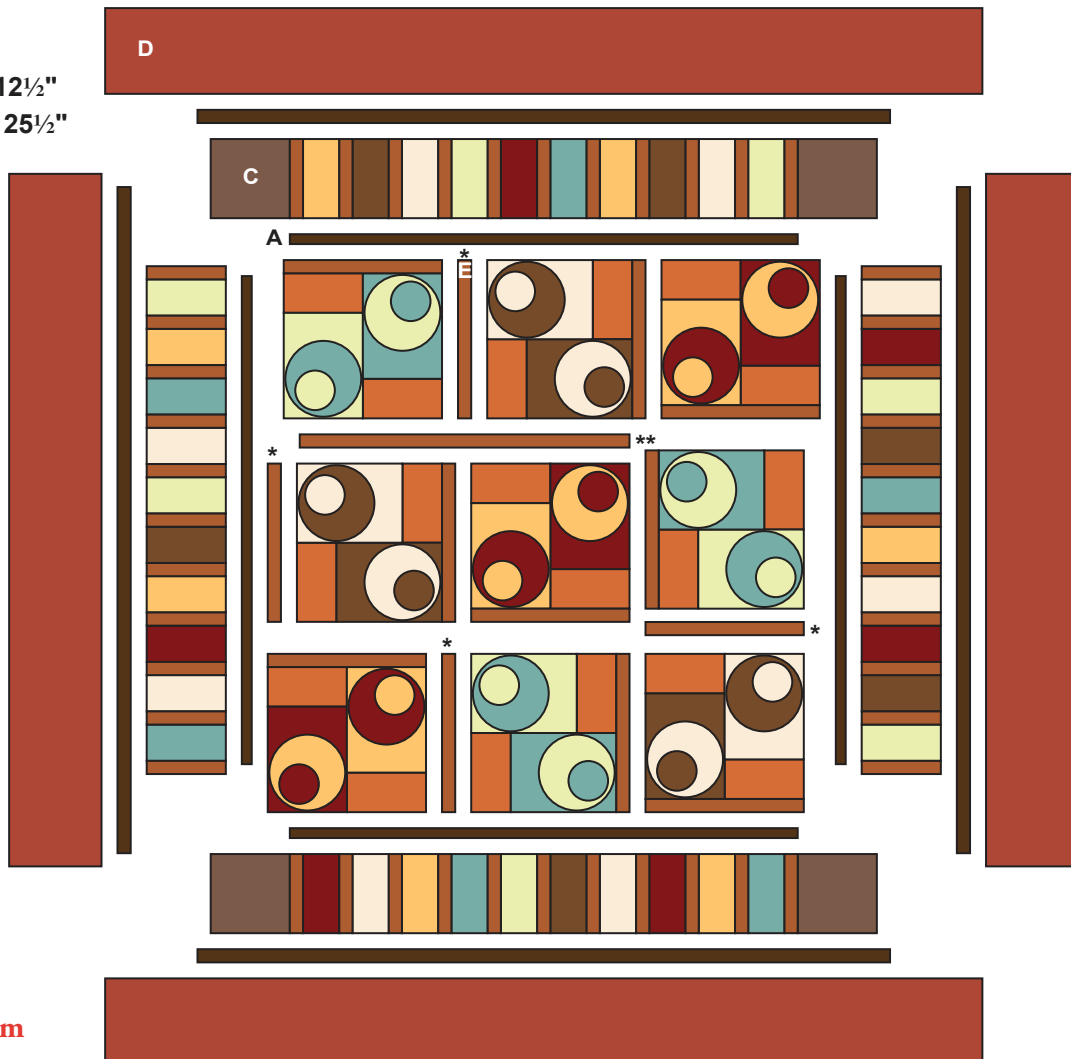
Bubble & Swirl Quilt

2. Draw 5¾" diameter and 3" diameter circles onto the paper side of fusible web. Cut out the circles, leaving some web around the drawn lines. Following manufacturer's instructions, fuse paper circles to the wrong side of polka dot fabrics. Cut fabric circles on the drawn lines. Position a large circle on one end of each polka dot background of the same color family (light circle on dark background, dark circle on light). Be sure that the large circle is about 3/8" from the outer edges. Place a small circle of the same color family on the large circle, as shown on the Block Diagram. Fuse in place. Finish the circle edges with a decorative machine stitch using contrasting thread or an invisible thread with a blind appliqué machine stitch. Make 9 blocks like this.
3. Referring to the Quilt Diagram, position the blocks, additional Fabric E 1½" x 12½" strips, and the 25½"-long Fabric E strip on a flat surface or design wall. Be sure to rotate the blocks as shown or they will not fit together properly. To make the top block row, join 3 blocks and a 1½" x 12½" strip. To make the middle row, join the first and second blocks with a 1½" x 12½" strip. Sew the 1½" x 25½" strip to the top of the 2 blocks. Sew a 1½" x 12½" strip to the bottom of the third block. Sew block to the other 2 blocks. To make the bottom row, sew 3 blocks together with 1 additional strip.
4. Sew Fabric A 1¼" x 37½" borders to the sides. Sew 39" borders to the top and bottom.
5. To make the pieced border sew 10 polka dot ¾" x 6½" rectangles alternately with 11 Fabric E 1½" x 6½" rectangles, arranging the polka dots as you wish. Make 4 borders like this. Sew pieced borders to sides of the quilt. Sew Fabric C squares to the ends of remaining borders, and sew to the top and bottom of the quilt.
6. Sew Fabric A 51" borders to the sides and 53" borders to the top and bottom. Sew short Fabric D borders to the sides and long borders to the top and bottom.

Finishing the Quilt

7. Layer the quilt with batting and backing and baste. Quilt in the ditch around borders and patches. Quilt around the circles. Bind to finish the quilt.

*1½" x 12½"
**1½" x 25½"



Quilt
Diagram

1384 Broadway
 New York, NY 10018
 (800) 223-5678
 www.andoverfabrics.com

Bubble and Swirl

by Lonni Rossi



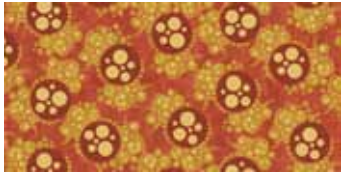
makower uk®



5612-MO



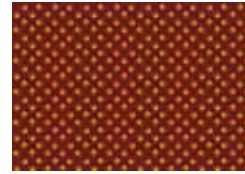
5613-MO*



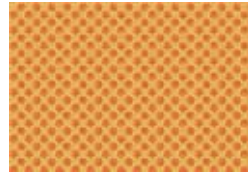
5614-MO



5614-MY



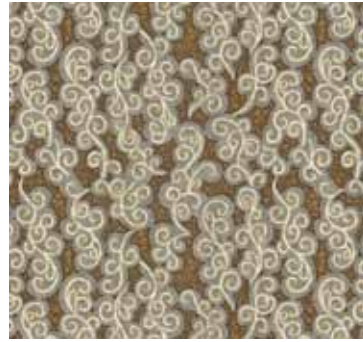
5615-MR*



5615-MY*



5612-MC



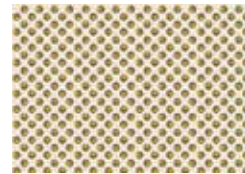
5613-MC



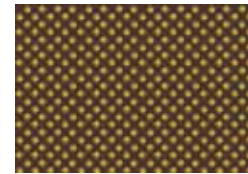
5614-ML



5614-MN*



5615-ML*



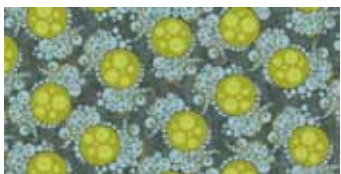
5615-MN*



5612-MB



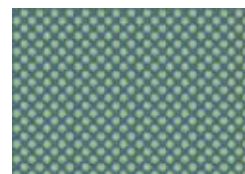
5613-MB



5614-MB



5614-MC



5615-MB*



5615-MG*

*Additional fabrics
 by Lonni Rossi*

Raindrops



5468-O*



5468-C



5468-LT

Little Lonni's



5162-K*

Lala's Garden



5611-MR*

*Indicates fabric used in quilt pattern. Fabrics shown are 10% of actual size.

Free Pattern Download Available at www.andoverfabrics.com

10/24/11