

Villagers, Rejoice!

by Lizzy House



Featuring the
Castle Peeps Collection
by Lizzy House
Quilt designed by Lizzy House
Finished size: 40" x 55"



makower uk

1384 Broadway · New York, NY 10018
(800) 223-5678 · www.andoverfabrics.com

Villagers Rejoice! Quilt

Introducing Andover Fabrics new collection: Castle Peeps by Lizzy House

Quilt designed by Lizzy House

Quilt finishes 40" x 55"

Planning

In Medieval times, the villagers were happy when the king was happy. Castle Peeps fabric collection is reminiscent of those days.

Fabric Requirements & Cutting Directions

Note: When cutting the castle stripe along the length of the fabric for the outside borders, cut at least $\frac{1}{4}$ " beyond the tip of the tallest flag so the flag won't disappear when stitched; cut strips $5\frac{1}{2}$ " wide, trimming off bottom of castles as necessary.

4874-Y $\frac{1}{2}$ yard Yellow Flag Print (center section)

Cut (1) $5\frac{1}{2}$ " x $30\frac{1}{2}$ " strip

Cut (1) $5\frac{1}{2}$ " x $20\frac{1}{2}$ " strip

Cut (1) $5\frac{1}{2}$ " x $5\frac{1}{2}$ " square

Cut (2) Castle top side pieces with template, reverse 1

4871-N $\frac{1}{2}$ yard Dark Brown People Print (center section)

Cut (1) $10\frac{1}{2}$ " x $20\frac{1}{2}$ " strip

Cut (1) $10\frac{1}{2}$ " x $5\frac{1}{2}$ " strip

4872-G $\frac{1}{2}$ yard Green Allover Castle Print (center section)

Cut (1) $10\frac{1}{2}$ " x $20\frac{1}{2}$ " strip

Cut (1) $10\frac{1}{2}$ " x $5\frac{1}{2}$ " strip

*4875-G $\frac{1}{4}$ yard Green/Yellow Scallop Print (center section)

Cut (1) $5\frac{1}{2}$ " x $20\frac{1}{2}$ " strip

Cut (1) $5\frac{1}{2}$ " x $5\frac{1}{2}$ " square

4876-G $\frac{7}{8}$ yard Dark Green Print (center section, binding)

Cut (1) $10\frac{1}{2}$ " x $20\frac{1}{2}$ " strip

Cut (1) $10\frac{1}{2}$ " x $5\frac{1}{2}$ " strip

Cut (1) Castle top piece with template

Cut (5) $2\frac{1}{2}$ " x width of fabric strips (approx. 42") for binding

4873-G $1\frac{5}{8}$ yards Light Green Castle Stripe (center section, borders)

Cut (1) $5\frac{1}{2}$ " x $35\frac{1}{2}$ " strip across fabric width for center section

Cut (2) $5\frac{1}{2}$ " x $45\frac{1}{2}$ " strips along length of fabric for side borders

Cut (2) $5\frac{1}{2}$ " x $40\frac{1}{2}$ " strips along length of fabric for top/bottom borders

*Additional fabric required for backing.

4875-G $3\frac{1}{2}$ yards Green/Yellow Scallop Print (center section)

Cut and piece to fit quilt top with 4" overlap on all sides.

Making & Assembling the Quilt

1. Sew a yellow castle top side triangle and reverse triangle to the green print castle top triangle to the dark green castle top unit (Diagram 1). Press seam allowances toward the dark green print triangle.



Diagram 1

2. Refer to the Quilt Diagram throughout the assembly.
3. Sew the castle top unit between the $5\frac{1}{2}$ " yellow square and the $5\frac{1}{2}$ " x $20\frac{1}{2}$ " yellow strip to make the castle top strip (Diagram 2). Press seam allowances away from the castle top unit.



Diagram 2

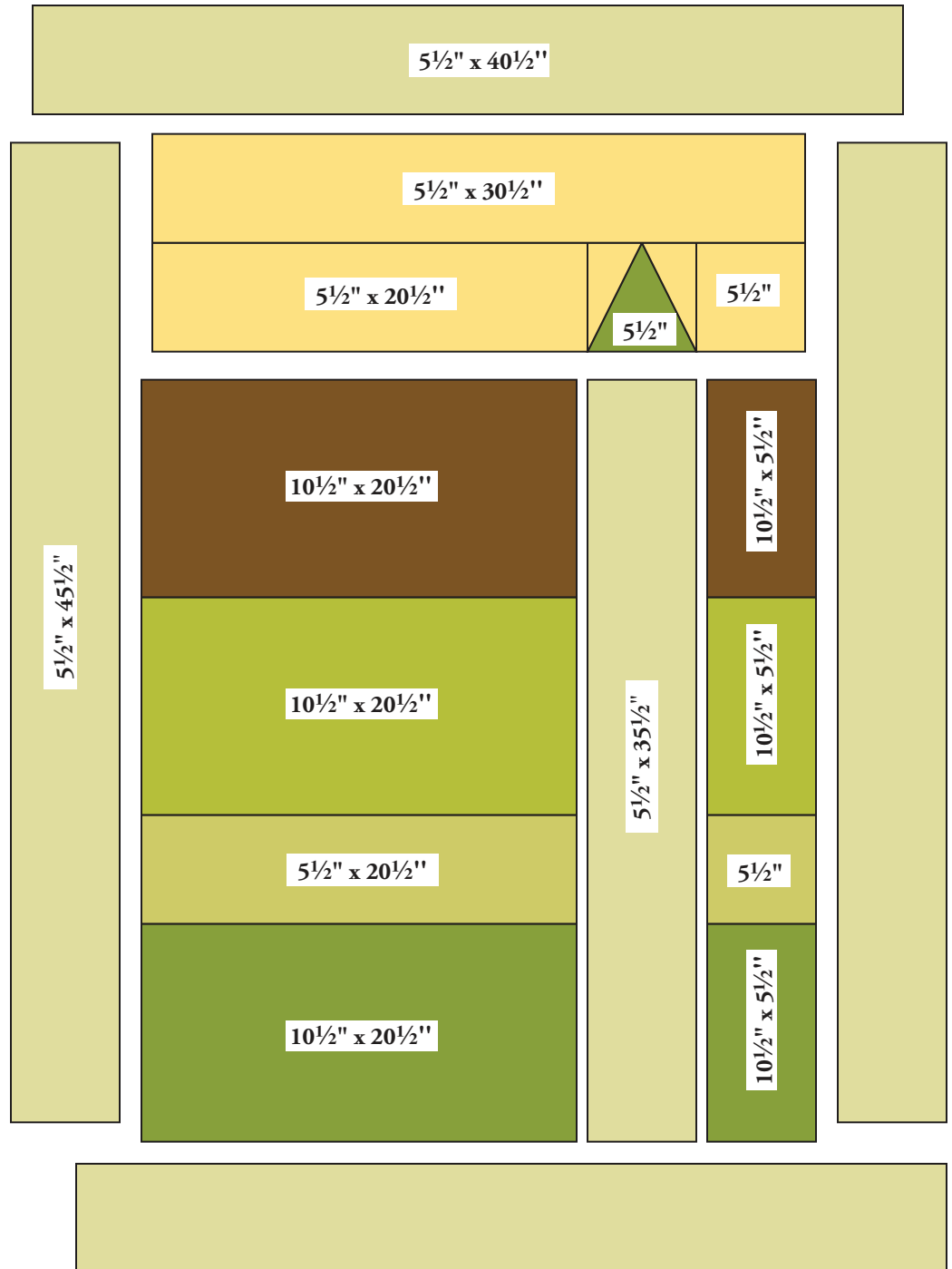
4. Sew the $5\frac{1}{2}$ " x $30\frac{1}{2}$ " yellow strip to the top edge of the castle top strip to complete the top unit. Press seam allowance toward the yellow strip.
5. Join the three $10\frac{1}{2}$ " x $5\frac{1}{2}$ " strips with the $5\frac{1}{2}$ " scallop square to make a narrow side strip. Press seam allowances in one direction.

Villagers Rejoice! Quilt

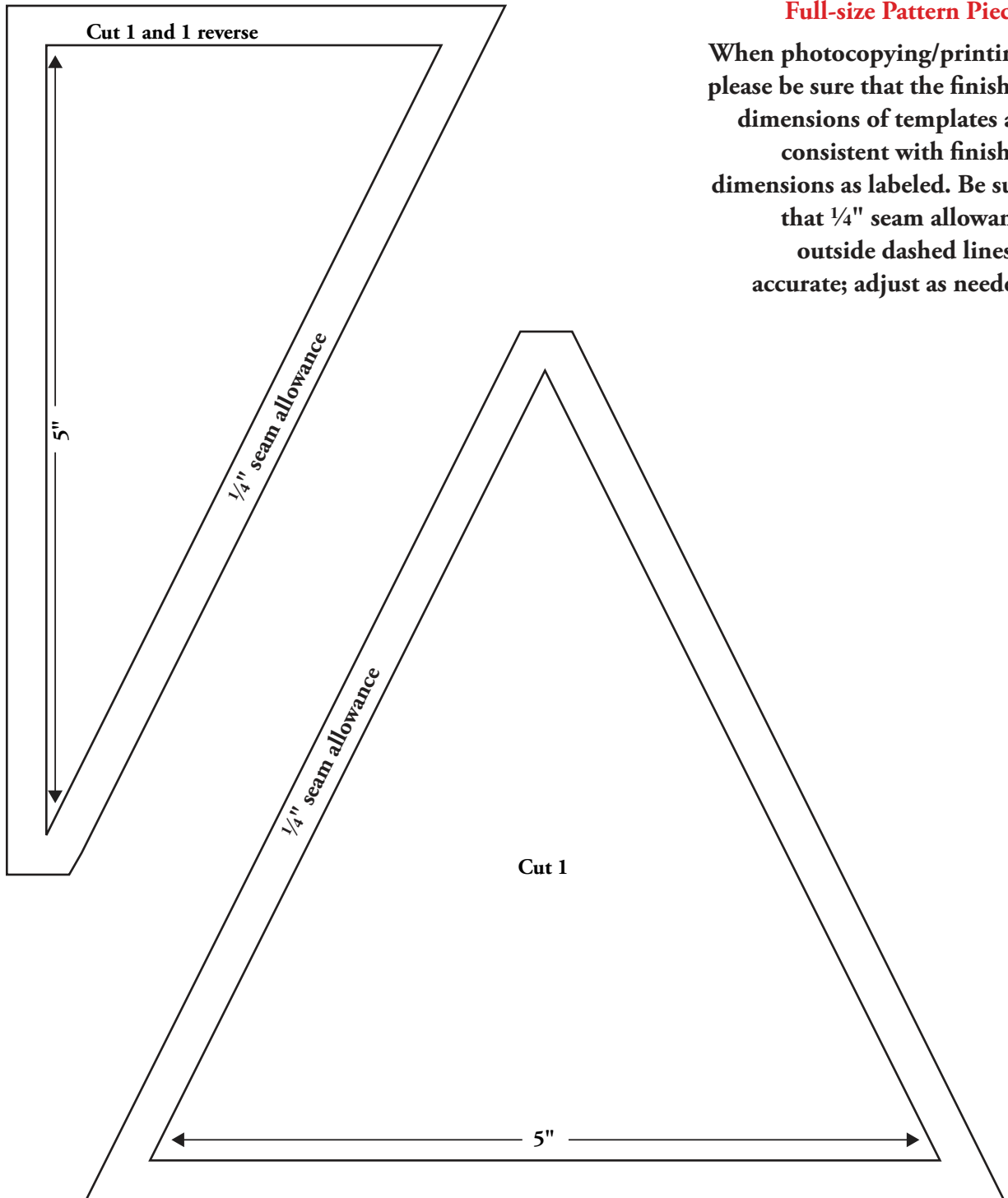
6. Join the three $10\frac{1}{2}$ " x $20\frac{1}{2}$ " strips with the $5\frac{1}{2}$ " x $20\frac{1}{2}$ " scallop strip to make wide side strip. Press seam allowances in one direction.
7. Join the narrow side strip and the wide strip with the $5\frac{1}{2}$ " x $35\frac{1}{2}$ " castle stripe strip to make the bottom unit. Press seam allowances away from the side strips.
8. Join the top and bottom units to complete the pieced center. Press seam allowances toward bottom unit.
9. Sew the $5\frac{1}{2}$ " x $45\frac{1}{2}$ " castle stripe strips to opposite long sides and the $5\frac{1}{2}$ " x $40\frac{1}{2}$ " castle stripe strips to the top and bottom of the pieced center to complete the quilt top. Press seam allowances toward strips.

Finishing the Quilt

10. Layer quilt top with batting and backing. Quilt in the ditch of seams and as desired. Bind to finish the quilt.



Quilt Diagram



Full-size Pattern Pieces

When photocopying/printing, please be sure that the finished dimensions of templates are consistent with finished dimensions as labeled. Be sure that $\frac{1}{4}$ " seam allowance outside dashed lines is accurate; adjust as needed.

Full-size Pattern Pieces

1384 Broadway
 New York, NY 10018
 (800) 223-5678
 www.andoverfabrics.com

Castle Peeps

by Lizzy House

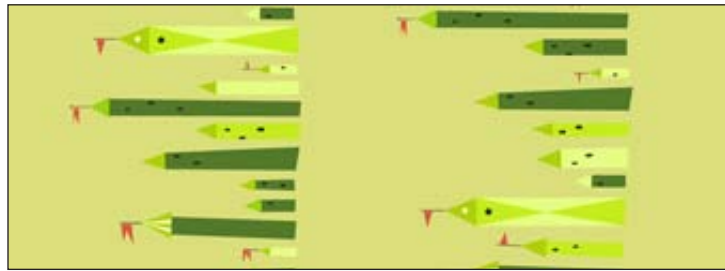
Andover
 Fabrics™
 makower uk®



4871-N*



4872-G*



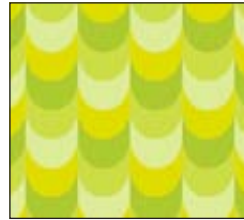
4873-G*



1867-G4



4874-Y*



4875-G*



4876-G*



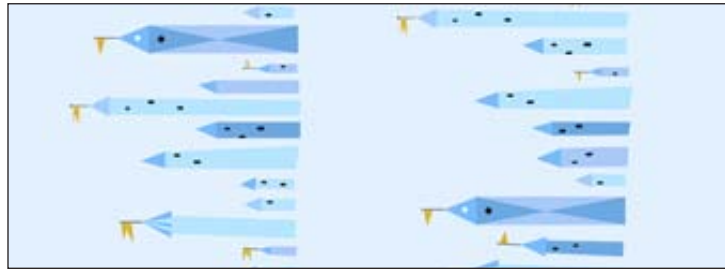
1867-Y4



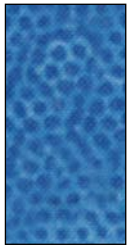
4871-B



4872-B



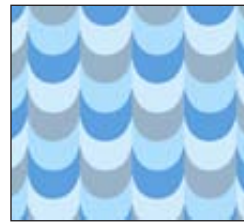
4873-B



1867-W



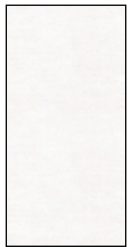
4874-B



4875-B



4876-B



1867-WW



4871-E



4872-K



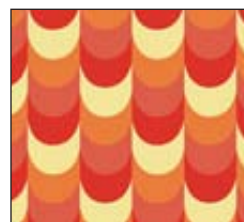
4873-Y



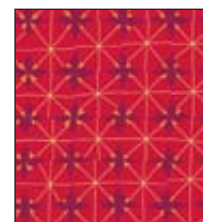
1867-T4



4874-O



4875-O



4876-Y



1867-Y11

*Indicates fabric used in quilt pattern. Fabrics shown are 20% of actual size.