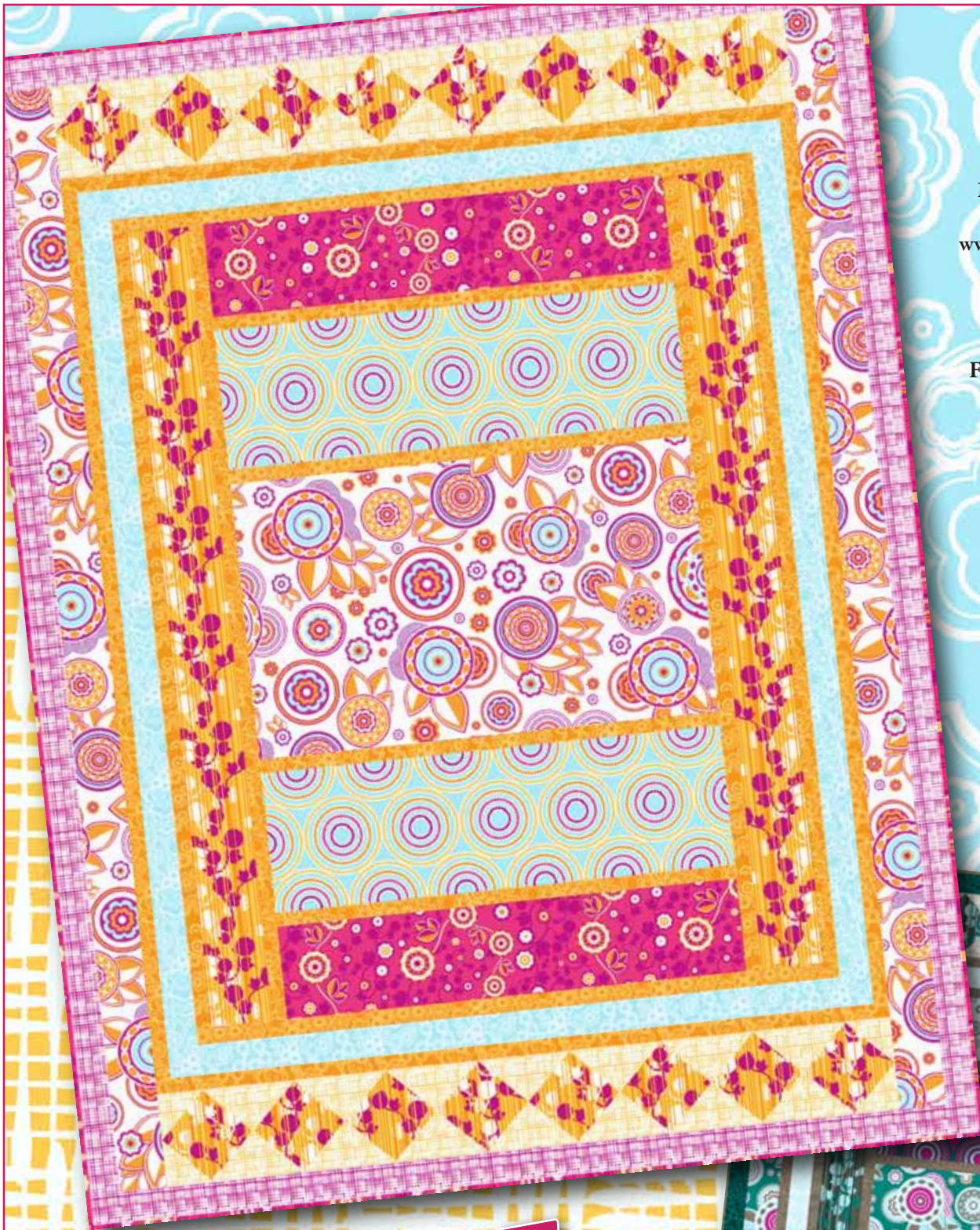




makower uk[®]

1384 Broadway
New York, NY 10018
(800) 223-5678
www.andoverfabrics.com

Quilt designed
by Jean Ann Wright
Finished size: 58" x 76"



Dazzle

Fabrics by
Melissa Averino



Dazzle Quilt

Introducing Andover Fabrics new collection: Dazzle by Melissa Averinos
Quilt designed by Jean Ann Wright

Fabric Requirements

		Yardage	Pink	Blue
Fabric A	center panel	1 $\frac{1}{8}$ yards	5416-L	5416-T
Fabric B	center panel	$\frac{2}{3}$ yard	5417-B	5417-E
Fabric C	center panel, binding	1 yard	5419-E	5419-L
Fabric D	borders, blocks	1 $\frac{5}{8}$ yards	5418-Y	5418-N
Fabric E	borders	$\frac{7}{8}$ yard	5420-Y	5420-N
Fabric F	borders	$\frac{1}{2}$ yard	5420-W	5421-W
Fabric G	blocks	$\frac{3}{4}$ yard	5421-Y	5421-N
Fabric H	borders	$\frac{5}{8}$ yard	5421-E	5420-T
Fabric H	backing	4 $\frac{2}{3}$ yards	5421-E	5420-T

Quilt finishes: 58" x 76"
16 Pieced Blocks: 6" x 6"

Showcase these beautiful large-scale prints in a simple-to-stitch quilt using multiple borders and easy pieced blocks.

Cutting Directions

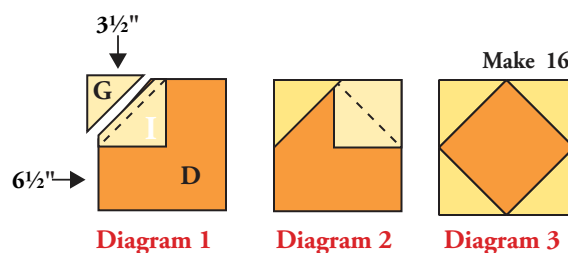
Note: WOF designates the width of fabric from selvedge to selvedge (approximately 42" wide).

- Fabric A** Cut (1) strip 18 $\frac{1}{2}$ " x 30 $\frac{1}{2}$ " for center panel
Cut (4) strips 3 $\frac{1}{2}$ " x WOF; piece together to make (2) 3 $\frac{1}{2}$ " x 72 $\frac{1}{2}$ " strips for side borders
- Fabric B** Cut (2) strips 9 $\frac{1}{2}$ " x 30 $\frac{1}{2}$ " for center panel
- Fabric C** Cut (2) strips 6 $\frac{1}{2}$ " x 30 $\frac{1}{2}$ " for center panel
Cut (6) strips 2 $\frac{1}{2}$ " x WOF for binding
- Fabric D** Cut (2) identical strips 4 $\frac{1}{2}$ " x 52 $\frac{1}{2}$ " along fabric length for side borders.
Cut the remaining fabric width into four 6 $\frac{1}{2}$ " strips; crosscut these strips into (16) 6 $\frac{1}{2}$ " squares
- Fabric E** Cut (13) strips 1 $\frac{1}{2}$ " x WOF; piece together to make (2) 1 $\frac{1}{2}$ " x 42 $\frac{1}{2}$ ", (4) 1 $\frac{1}{2}$ " x 52 $\frac{1}{2}$ ", (2) 1 $\frac{1}{2}$ " x 48 $\frac{1}{2}$ " and (2) 1 $\frac{1}{2}$ " x 58 $\frac{1}{2}$ " strips for borders. **Note:** If fabric has a 42 $\frac{1}{2}$ " useable width, cut the 1 $\frac{1}{2}$ " x 42 $\frac{1}{2}$ " across the WOF to eliminate piecing.
Cut (4) strips 1 $\frac{1}{2}$ " x 30 $\frac{1}{2}$ " for center panel
- Fabric F** Cut (5) strips 2 $\frac{1}{2}$ " x WOF; piece together to make (2) 2 $\frac{1}{2}$ " x 46 $\frac{1}{2}$ " strips and (2) 2 $\frac{1}{2}$ " x 54 $\frac{1}{2}$ " strips for borders.
- Fabric G** Cut (4) strips 3 $\frac{1}{2}$ " x WOF; crosscut strips into (64) 3 $\frac{1}{2}$ " squares for blocks.
- Fabric H** Cut (7) 2 $\frac{1}{2}$ " x WOF; piece together to make (2) 2 $\frac{1}{2}$ " x 58 $\frac{1}{2}$ " strips and (2) 2 $\frac{1}{2}$ " x 72 $\frac{1}{2}$ " strips for borders.
- Backing** Cut (2) panels 42" x 82" and piece to fit quilt top with 4" overlap on all sides

Completing the Blocks

Note: Refer to Diagrams 1–3 to complete the blocks.

1. Draw a diagonal line from corner to corner on the wrong side of each 3 $\frac{1}{2}$ " fabric G square.
2. Place a marked 3 $\frac{1}{2}$ " fabric G square right sides together on one corner of a 6 $\frac{1}{2}$ " fabric D square and stitch on the marked line. Trim seam allowance to $\frac{1}{4}$ " and press the fabric G piece to the right side.
3. Repeat step 2 on each corner of the fabric D square to complete one block.
4. Repeat steps 2 and 3 to complete a total of 16 blocks.



Dazzle Quilt

Completing the Quilt Top

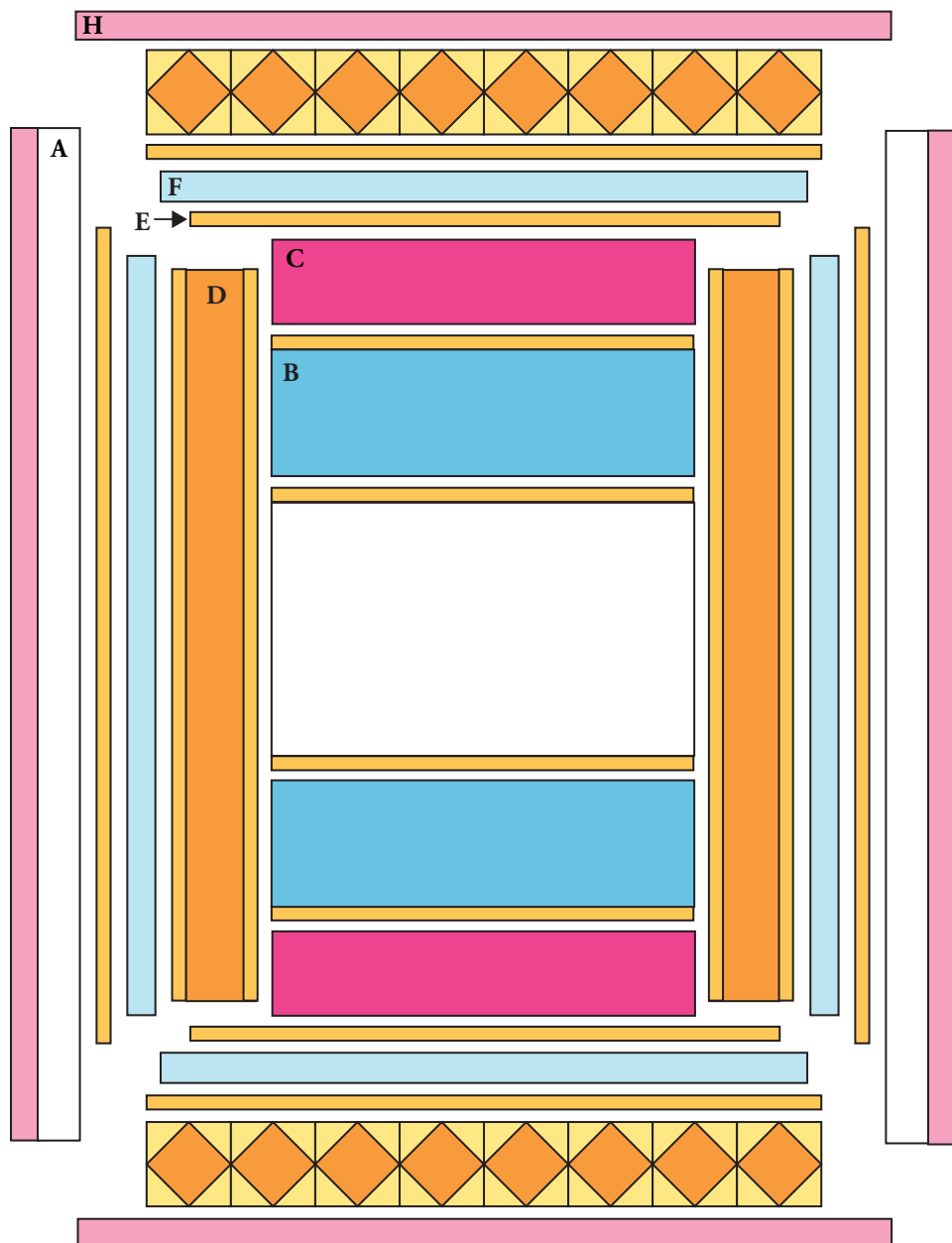
Note: Refer to the Quilt Diagram for all steps.

5. Sew a 1½" x 30½" fabric E strip to opposite sides of the 18½" x 30½" fabric A rectangle; press seams toward the fabric E strips. Add a 9½" x 30½" fabric B rectangle to the E sides of the stitched unit; press seams toward the fabric E strips.
6. Add a 1½" x 30½" fabric E strip to the fabric B sides of the stitched unit and add a 6½" x 30½" fabric C rectangle to complete the center panel; press seams toward the fabric E strips.
7. Sew a 1½" x 52½" fabric E strip to opposite sides of a 4½" x 52½" fabric D strip; press seams toward the fabric E strips. Repeat to make a second E-D-E strip.
8. Sew an E-D-E strip to opposite long sides of the center panel; press seams toward the E-D-E strips.
9. Sew a 1½" x 42½" fabric E strip to the top and bottom of the center panel; press seams toward the fabric E strips.
10. Add the 2½" x 54½" fabric F strips to opposite long sides and the 2½" x 46½" fabric F strips to the top and bottom of the center panel; press seams toward the fabric F strips. Repeat with the 1½" x 58½" and 1½" x 48½" fabric E strips.
11. Join six blocks to make a block strip; press seams in one direction. Repeat to make a second block strip. Sew a block strip to the top and bottom of the center panel; press seams toward fabric E strips.

12. Sew a 3½" x 72½" fabric A strip to a 2½" x 72½" fabric H strip along length; press seam toward the fabric H strip. Repeat to make a second strip. Sew these strips to the long sides of the center panel with the fabric A strip on the inside edge; press seams toward the A-H strips.
13. Sew the 21½" x 581/2" fabric H strips to the top and bottom of the center panel to complete the quilt top; press seams toward the fabric H strips.

Finishing the Quilt

14. Center and layer quilt top with batting on the pieced backing. Quilt in the ditch of seams and as desired. Bind to finish the quilt.



Quilt Diagram

1384 Broadway
New York, NY 10018
(800) 223-5678
www.andoverfabrics.com

Dazzle

by Melissa Averinos

Andover
Fabrics™
makower uk®



5416-L*



5417-B*



5418-Y*



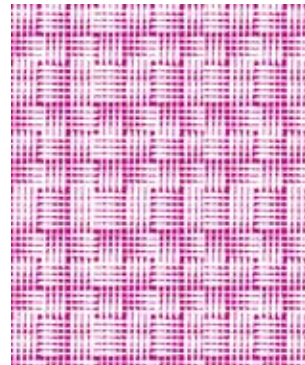
5419-E*



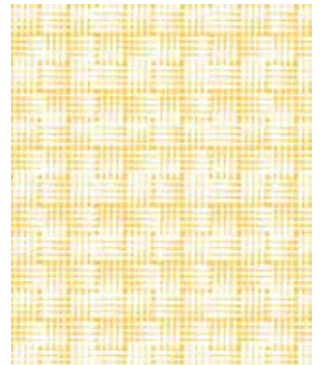
5420-W*



5420-Y*



5421-E*



5421-Y*



5416-T



5417-E



5418-N



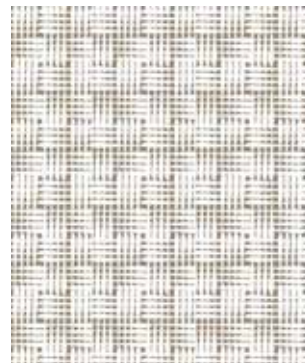
5419-L



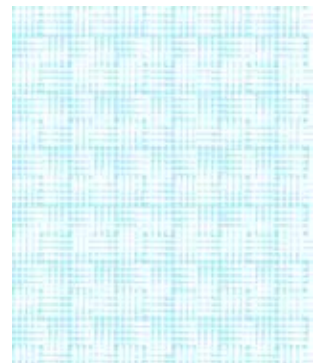
5420-N



5420-T



5421-N



5421-W

*Indicates fabric used in quilt pattern. Fabrics shown are 20% of actual size.

Free Pattern Download Available at www.andoverfabrics.com

4/14/11