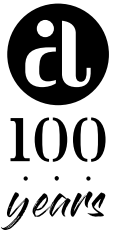


Fabric From the Basement

GIUCY GIUCE



Beneath Quilt designed by: **Giucy Giuce**
Quilt Size: **64" x 64"** • Skill Level: **Advanced**

andover

•
•
• makower.uk
•

Free Pattern Download Available

1384 Broadway New York, NY 10018
Tel. (800) 223-5678 • andoverfabrics.com

Beneath Quilt

Introducing Andover Fabrics new collection:
Fabric From the Basement by Giucy Giuce
Quilt designed by Giucy Giuce

Quilt finishes 64" x 64"

Unusual fabric prints and a one-of-a-kind contemporary setting will elicit much interest in this wall quilt. No matter where you look, there is something unexpected and exciting to see. The piecing is surprisingly easy for such a complex-looking quilt. Taking it slow and easy and finishing each step before looking ahead will get you there.

Cutting Directions

Note: Read assembly directions before cutting patches.

All measurements are cut sizes and include 1/4" seam allowances. A fat 1/8 is a 9" x 20"-22" cut of fabric. A fat 1/4 is an 18" x 20"-22" cut. Borders are cut the exact lengths required plus 1/4" seam allowances. WOF designates the width of fabric from selvedge to selvedge (approximately 43" wide).

Fabric A Borders #6 & #7

Fussy-cut (7) rectangles 1 1/2" x 7 1/2"
(Read directions before cutting.)

Fabric B Border #7

Fussy-cut (7) rectangles 2" x 3 1/2" for Flying Geese
(Read directions before cutting.)

Fabric C Border #8

Fussy-cut (8) border strips 4 1/2" x 21 1/2"
(Read directions before cutting)
Fussy-cut (4) corner squares 4 1/2"

Fabric D Center Block

Fussy-cut (8) Template 2 (Read directions before cutting.)
Fussy-cut (4) strips 2 1/2" x 8 1/2"
Fussy-cut (8) squares 2 1/2"

Fabric E Border #10

Fussy-cut (8) border strips 4 1/2" x 28 1/2"
(Read directions before cutting.)
Fussy-cut (4) corner squares 4 1/2"

Fabric F Border #7

Cut (6) rectangles 2" x 3 1/2" for Flying Geese

Fabric G Border #9

Cut (4) border strips 1 1/2" x 50 1/2", cut crosswise and pieced

Fabric H Center Block

Cut (8) Template 1
Cut (4) Template 2

Fabric I Border #1

Cut (7) rectangles 1 1/2" x 2 1/2" for Flying Geese

Fabric Requirements

		Yardage	Fabric
Fabric A	border 6/7	fat 1/4	455-B
Fabric B	border 7	fat 1/4	455-C
Fabric C	border 8	3/4 yard	455-K
Fabric D	block	3/4 yard	455-N
*Fabric E	border 10	3 5/8 yards	455-P
Fabric F	border 7	fat 1/8	456-B
Fabric G	border 9	1/4 yard	456-E
Fabric H	block	fat 1/8	456-N
Fabric I	border 1	fat 1/8	457-K
Fabric J	border 9	fat 1/8	457-P
Fabric K	border 6	1/2 yard	457-V
Fabric L	border 6/7	fat 1/8	458-B
Fabric M	border 3	fat 1/4	458-N
Fabric N	border 2	fat 1/8	458-O
Fabric O	border 9	1/4 yard	458-P
Fabric P	border 7	1 yard	458-T
Fabric Q	border 6	fat 1/8	459-B
Fabric R	border 4	1/4 yard	459-G
Fabric S	border 9	3/8 yard	459-R
Fabric T	border 5	1/4 yard	460-T
Fabric U	border 1	fat 1/8	461-C
Fabric V	border 6	fat 1/8	461-G
Fabric W	border 1, 3	3/8 yard	461-O
Binding		5/8 yard	460-K
Backing		4 1/4 yards	456-K

*Be creative and use your leftover fabrics to piece the back or use 4 1/4 yards 456-K

Fabric J Border #9

Cut (4) corner squares 3 1/2"

Fabric K Border #6

Cut (2) Template 3
Cut (1) strip 4 1/2" x 21 1/2"
Cut (1) strip 4 1/2" x 19 1/2"
Cut (2) strips 4 1/2" x 8 1/2"
Cut (2) strips 4 1/2" x 5 1/2"
Cut (2) strips 2 1/2" x 4 1/2"
Cut (11) strips 1 1/2" x 4 1/2"
Cut (26) squares 2 1/2" for Flying Geese

Fabric L Borders #6 & #7

Cut (6) rectangles 1 1/2" x 7 1/2"

Fabric M Border #3

Cut (2) strips 3 1/2" x 12 1/2"
Cut (1) strip 3 1/2" x 9 1/2"
Cut (1) strip 3 1/2" x 6 1/2"
Cut (7) squares 4" for HST
Cut (2) squares 3 1/2"

Beneath Quilt

Fabric N Border #2

Cut (2) strips 1½" x 18½"

Cut (2) strips 1½" x 16½"

Fabric O Border #9

Cut (4) border strips 1½" x 50½", cut crosswise and pieced

Fabric P Border #6

Cut (2) Template 4

Border #7

Cut (1) strip 3½" x 24½"

Cut (1) strip 3½" x 21½"

Cut (1) strip 3½" x 19½"

Cut (1) strip 3½" x 11½"

Cut (1) strip 3½" x 9"

Cut (1) strip 3½" x 7½"

Cut (1) strip 3½" x 5½"

Cut (2) strips 3½" x 4½"

Cut (2) strips 3½" x 4"

Cut (11) strips 1½" x 3½"

Cut (1) strip 2½" x 3½"

Cut (26) squares 2" for Flying Geese corners

Fabric Q Border #6

Cut (7) rectangles 2½" x 4½" for Flying Geese

Fabric R Border #4

Cut (2) borders 1½" x 26½"

Cut (2) borders 1½" x 24½"

Fabric S Center Block

Cut (4) Template 1

Border #9

Cut (4) border strips 1½" x 50½", cut crosswise and pieced

Fabric T Border #5

Cut (2) border strips 1½" x 28½", cut crosswise

Cut (2) border strips 1½" x 26½", cut crosswise

Fabric U Border #1

Cut (6) rectangles 1½" x 2½" for Flying Geese

Fabric V Border #6

Cut (6) rectangles 2½" x 4½" for Flying Geese

Fabric W Border #1

Cut (1) strip 2½" x 11½"

Cut (1) strip 2½" x 10½"

Cut (1) strip 2½" x 9½"

Cut (1) strip 2½" x 8½"

Cut (26) squares 1½" for Flying Geese corners

Cut (2) squares 2½"

Cut (1) patch 1½" x 2½"

Border #3

Cut (7) squares 4" for HST

Binding

Cut (7) strips 2½" x WOF for binding

Backing

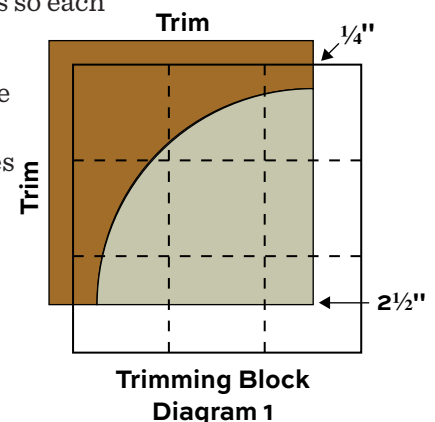
Cut (2) lengths 36" x 72", pieced to fit quilt top with overlap on all sides

Making the Quilt

Refer to the Diagrams and Quilt Photograph for all steps.

- Fussy-Cuts:** Fabrics A-E are printed with stripes of light and dark sections. Study the Quilt Diagram to see placement of the border strips and patches to be certain you are cutting the fabric to allow for the light/dark designs as shown. Before cutting from these fabrics, read the specific directions for cutting in the following steps.
- Center Block:** Refer to the Center Block Diagram on next page. Cut 4 Fabric D 2½" corner squares on the solid gold part of the print. Cut 4 more 2½" corner squares on point so half of each square is light and half solid gold. Cut the 2½" x 8½" Fabric D rectangles so each is half light and half dark gold, as shown in the quilt photograph.

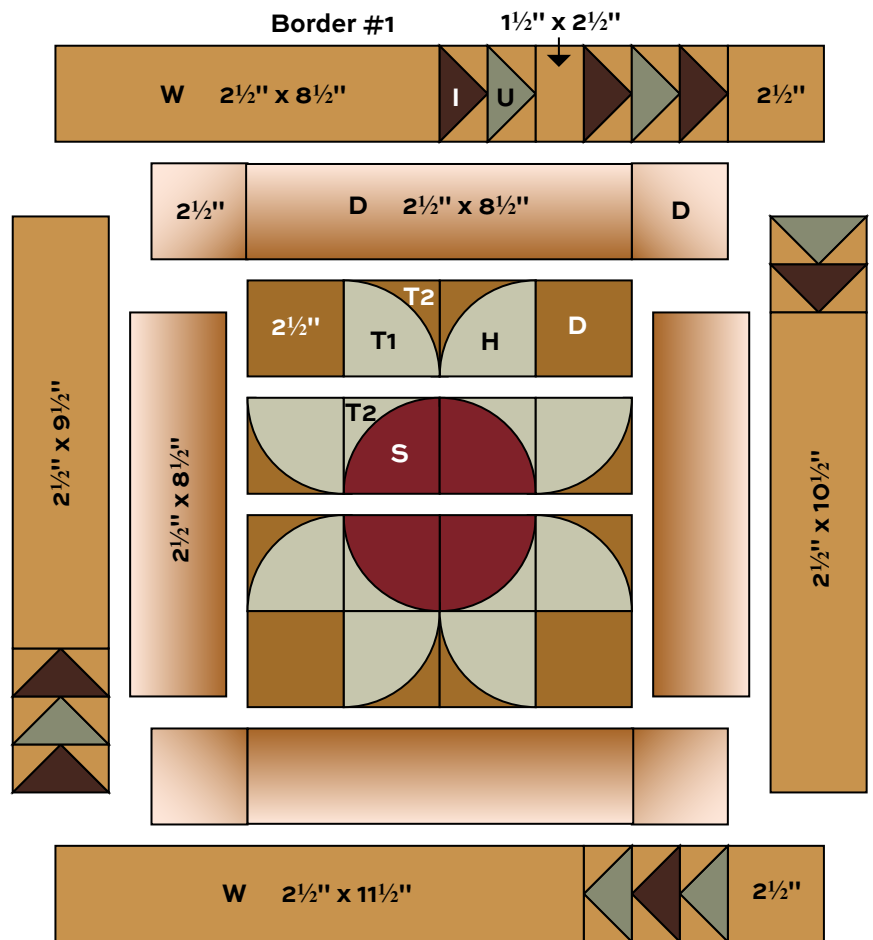
Make acrylic templates of T1 and T2, including the dots. Poke holes through the template at each dot with an ice pick. Mark 4 Template 1 on the wrong side of Fabric S and mark 4 Template 2 on Fabric H, including the dots. Cut the patches out. Likewise, mark and cut out 8 Template 1 from Fabric H. Cut out and mark 8 Template 2 from the "solid" gold portion of Fabric D. Pin a T2 patch on top of a T1, matching dots and ends. Pin along the curve. Stitch in a ¼" seam allowance. Press seam allowances toward T1. Repeat to make all the units. Trim each unit to 2½" square as follows: position the 2½" mark of the acrylic ruler on the corner of T1 as shown in Diagram 1. Trim T2 along the opposite edges. Be sure that a ¼" seam allowance remains beyond the T1/T2 seam.



Beneath Quilt

Position and join the curved units and solid gold 2½" squares in 4 rows, and then join the rows. Sew Fabric D light/dark gold rectangles to the sides of center block, orienting them as shown. Join light/dark 2½" squares to ends of 2 rectangles and sew to the top and bottom. The center block should measure 12½" square.

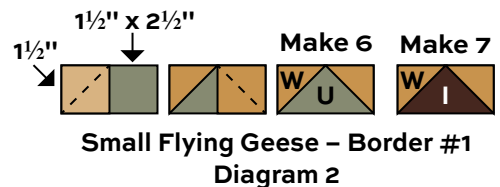
- Border # 1:** Fast Flying Geese units are used in this border. Draw a diagonal line on the Fabric W 1½" squares. Position a marked square as shown on one end of a Fabric I or Fabric U rectangle (Diagram 2). Stitch on the marked diagonal line. Cut away the excess fabric. Press the corner up. Repeat this step on the opposite end of the rectangle. Make 13 Flying Geese. Arrange the Flying Geese and other Fabric W patches to form 4 borders, as shown in the Center Block and Border #1 Diagram. Join the parts. Sew shorter borders to the sides and longer borders to the top and bottom.



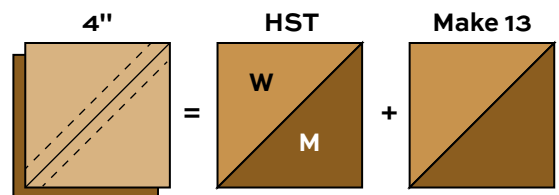
Center Block and Border #1

Refer to Quilt Diagram on Page 7 for following.

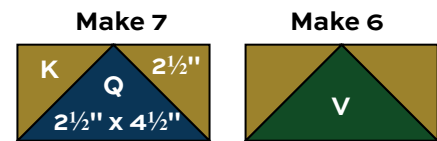
- Border #2:** Sew shorter Fabric N borders to the sides and longer Fabric N borders to top and bottom.
- Border #3:** This border has 13 half-square triangle units (HST). Use your favorite method to make HST that finish 3", or follow these directions. Fabric M and W squares cut 4" will be trimmed after stitching. Draw a diagonal line on the wrong side of the Fabric W squares. With right sides together, position the marked square on top of the Fabric M squares. Stitch ¼" on each side of the diagonal line (Diagram 3). Cut apart on the drawn line. Press the seam allowance toward the darker fabric. Trim the HST to 3½". You need 13 HST, so one is not needed. Arrange HST and other Fabric M patches to form 4 borders. Join the parts. Sew shorter borders to the sides and longer borders to the top and bottom.
- Borders #4 & #5:** Sew shorter Fabric R borders to the sides and longer Fabric R borders to top and bottom. Repeat these steps with Fabric T borders.



Small Flying Geese - Border #1
Diagram 2



Border # 3 - Diagram 3



Large Flying Geese - Border #6
Diagram 4

Beneath Quilt

- 7. Left and top Border #6:** There are 13 Flying Geese in Border 6. Refer to Step 3 and make 13 F.G. with Fabric Q and Fabric V $2\frac{1}{2}$ " x $4\frac{1}{2}$ " rectangles and Fabric K $2\frac{1}{2}$ " squares (Diagram 4). The units should measure $2\frac{1}{2}$ " x $4\frac{1}{2}$ ". Set aside for now.

Make 2 units with curved patches as follows. Cut 2 Template 3 from Fabric K and 2 Template 4 from Fabric P (Diagram 5). Stitch as described in Step 2. Trim these units to $4\frac{1}{2}$ " square. Set one of the curved units aside for later.

For top Border #6, arrange and join 5 Flying Geese and the Fabric K patches in the order shown. Sew to the top of the quilt.

For left side Border #6, arrange and join 8 Flying Geese, 1 curved unit, and Fabric K patches to make the left side border. Stitch left border to the quilt.

- 8. Bottom and right Borders #6/#7:** Cut each Fabric A $1\frac{1}{2}$ " x $7\frac{1}{2}$ " rectangle so about $4\frac{1}{2}$ " is positioned on the dark blue portion and $3\frac{1}{2}$ " on the light portion of Fabric A. Sew Fabric K $4\frac{1}{2}$ " strips and Fabric P $3\frac{1}{2}$ " strips to make 11 pieced rectangles, each $7\frac{1}{2}$ " long (Diagram 6).

For bottom Border #6/#7, join Fabric K and P $21\frac{1}{2}$ " strips. Arrange the $21\frac{1}{2}$ "-long unit, 5 of the $7\frac{1}{2}$ " pieced rectangles, and 3 Fabric A and 3 Fabric L $7\frac{1}{2}$ " rectangles in the order shown. Sew to the bottom.

To make the right Border #6/#7, join Fabric K and P $19\frac{1}{2}$ " strips. Stitch the Fabric P $3\frac{1}{2}$ " x $4\frac{1}{2}$ " patch to the second curved unit from Step 7. Arrange and join the $19\frac{1}{2}$ "-long pieced unit, 6 Fabric K/P $7\frac{1}{2}$ " pieced rectangles, 4 Fabric A and 3 Fabric L rectangles, and the curved patch unit in the order shown. Sew the Fabric P $3\frac{1}{2}$ " x $7\frac{1}{2}$ " patch to the bottom end. Sew this to the right side of the quilt.

- 9. Left and Top Border #7:** Cut the 7 Fabric B 2 " x $3\frac{1}{2}$ " rectangles so each is half light and half dark as shown in the quilt photograph. Make 13 Flying Geese with Fabric P 2 " squares and Fabric B and Fabric F rectangles. (Diagram 7).

For left side Border #7, arrange and join 8 Flying Geese and the Fabric P patches in the order shown. Sew to the left side of the quilt. For top Border #7, join 5 Flying Geese and Fabric P patches in the order shown and sew to the top of the quilt.

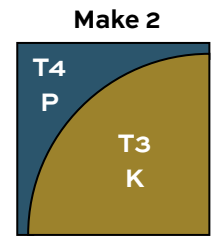
- 10. Border #8:** Cut Fabric C borders so the print is oriented as shown in the quilt photograph. Cut 4 corner squares from the dark portion of Fabric C. Join the various parts to make Border 8. Sew shorter borders to the sides and longer borders to the top and bottom.

- 11. Border #9:** Sew together Fabric S, G, and O border strips. Repeat to make 4 pieced borders like this. Sew 2 borders to the sides. Join Fabric J squares to ends of remaining pieced borders and sew to top and bottom.

- 12. Border #10:** Cut Fabric E borders so the light/dark print is as shown. Cut the $4\frac{1}{2}$ " corner squares on point so half of each square is dark and half is light. Sew Fabric E borders to the sides of the quilt. Join corner squares to ends of remaining Fabric E borders. Sew to the top and bottom.

Finishing the Quilt

- 13.** Layer the quilt with batting and backing and baste. Quilt in the ditch around borders and patches. Quilt background patches as desired. Bind to finish the quilt.



Curved Unit
Border #6
Diagram 5



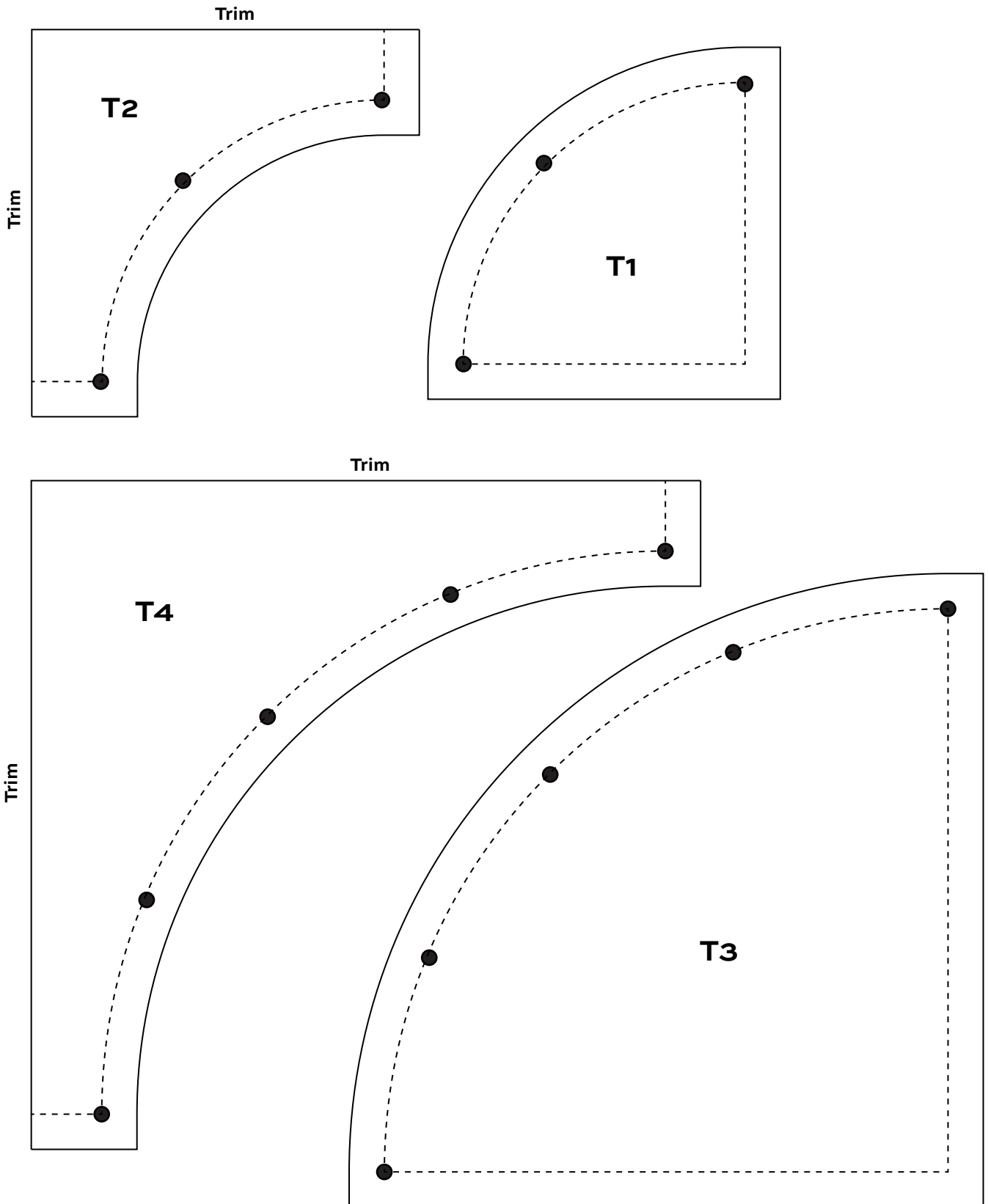
Rectangles - Border #6/7
Diagram 6



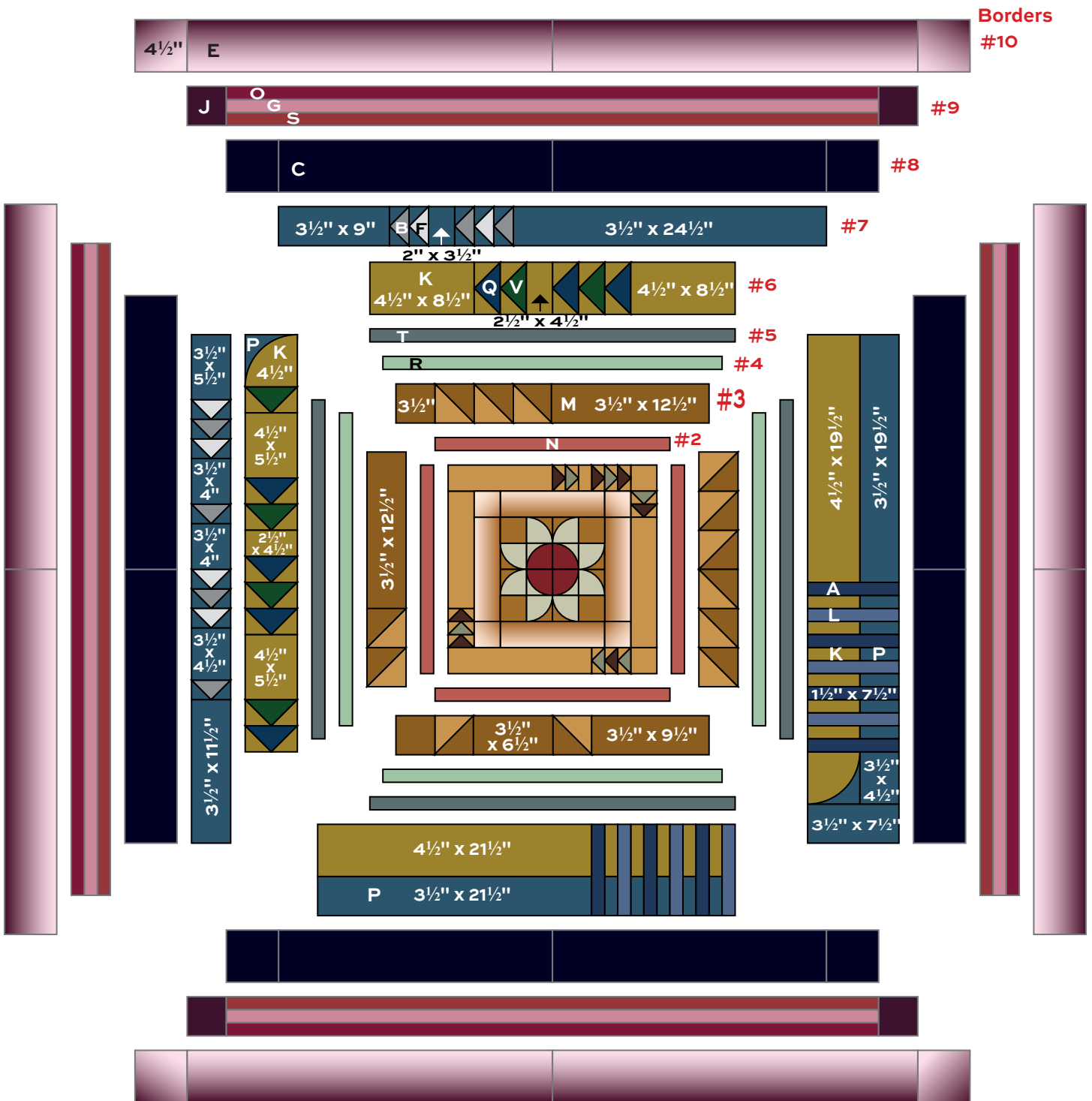
Medium Geese - Border #7
Diagram 7

Beneath Quilt

Print templates at 100%

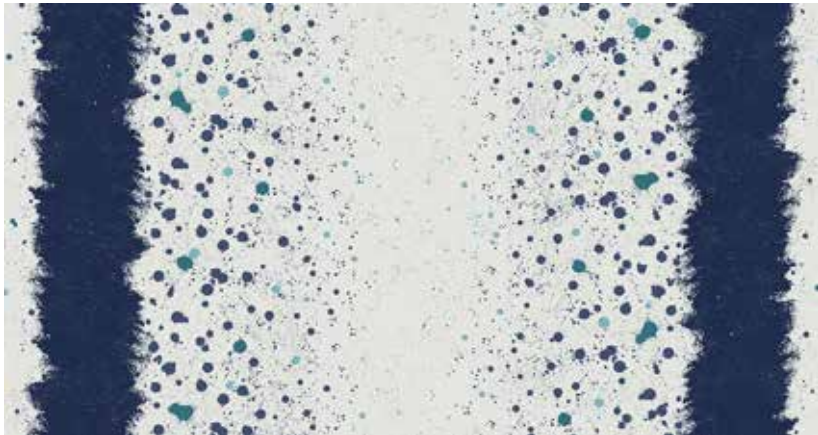


Beneath Quilt



Quilt Diagram

Fabric From the Basement GIUCY GIUCE



455-B*



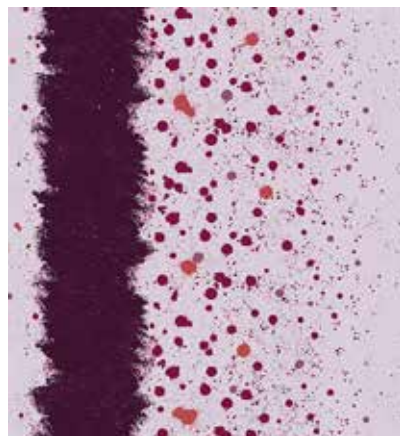
455-C*



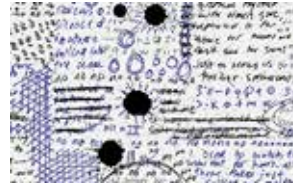
455-K*



455-N*



455-P*



456-B*



456-E*



456-K*



456-N*



457-K*



457-L



457-P*



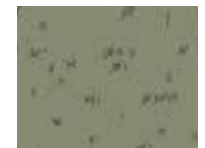
457-V*



459-B*



460-K*



461-C*



459-G*



460-L



461-G*



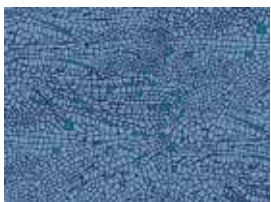
459-R*



460-T*



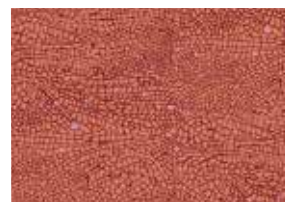
461-O*



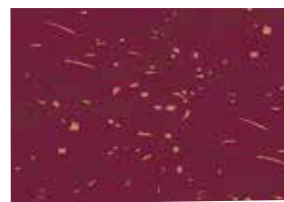
458-B*



458-N*



458-O*



458-P*



458-T*

*Indicates fabrics used in quilt pattern. Fabric panels are shown at 10%, all other fabrics shown are 25% of actual size.

andover : [makower uk](http://makower.uk)

Free Pattern Download Available

1384 Broadway New York, NY 10018
Tel. (800) 223-5678 • andoverfabrics.com