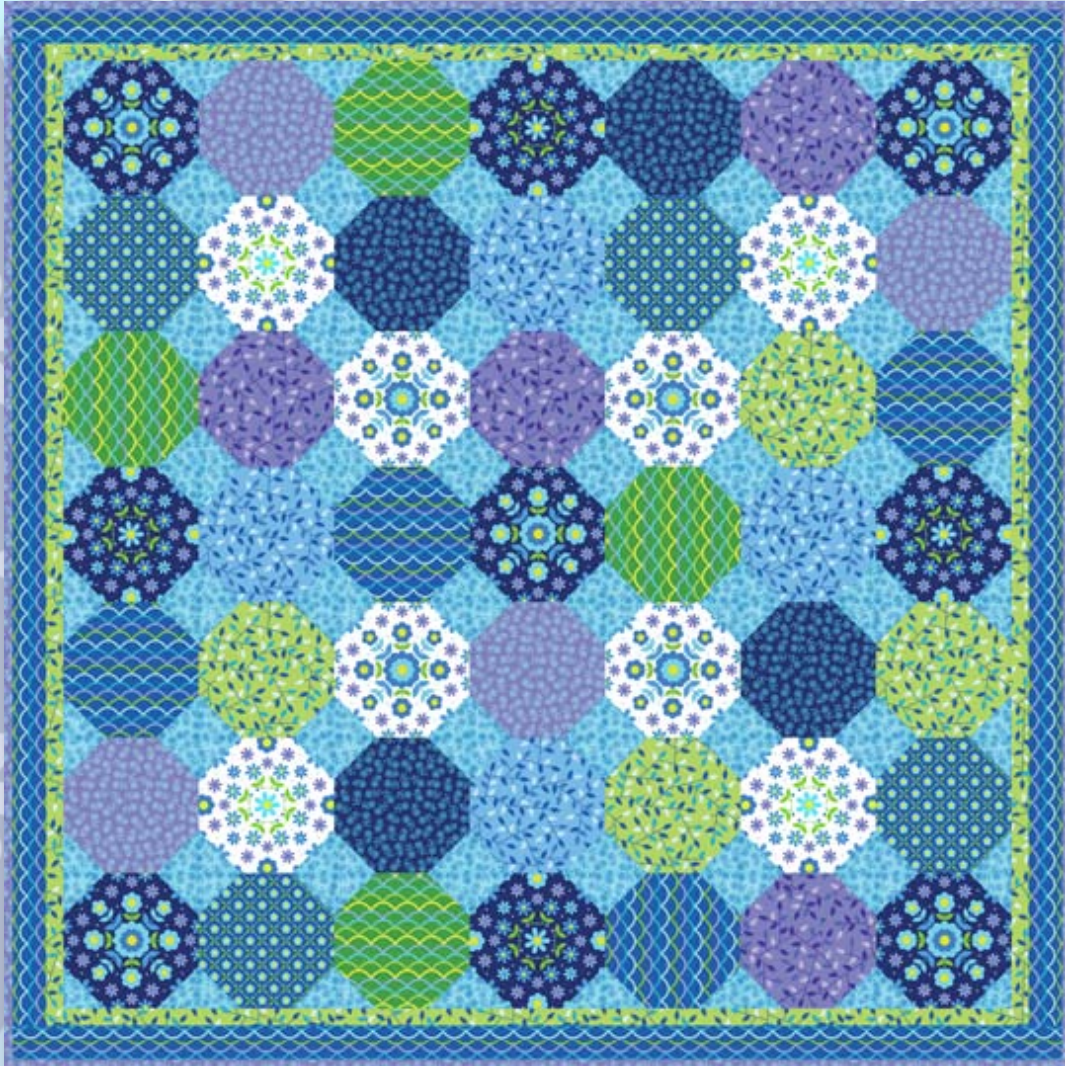


Fancy Free



Finished size: 62" x 62"

Featuring the
Fancy Free Collection
by **Erinn Kennedy**
Quilt designed Erinn Kennedy



makower uk[®]

1384 Broadway • New York, NY 10018
(800) 223-5678 • www.andoverfabrics.com

Fancy Free Quilt

Introducing Andover Fabrics new collection: Fancy Free by Erinn Kennedy

Quilt designed by Erinn Kennedy

Planning

A variety of lovely prints in a palette of greens and blues with a touch of yellow makes this simple quilt a pleasure to make and view. The fussy-cut white and dark blue flower prints are strategically placed to give a focus to this scrappy quilt. A simple method of piecing the block corners makes the construction quick and easy.

Quilt finishes 62" x 62"
49 Pieced Blocks: 8" x 8"

Fabric Requirements & Cutting Directions

Note: Borders are cut the exact lengths required plus 1/4" seam allowances. WOF designates the width of fabric from selvedge to selvedge (approximately 42" wide).

4331-B 1 3/4 yards Dark Blue Floral (blocks)

Cut (9) squares 8 1/2" x 8 1/2", fussy-cut as described in Step 1

4331-LB 1 3/4 yards White Floral (blocks)

Cut (8) squares 8 1/2" x 8 1/2", fussy-cut as described in Step 1

4332-G 5/8 yard Green Spring Leaves (inner border, blocks)

Cut (6) strips 1 1/2" x WOF, pieced to make the following:
2 borders 1 1/2" x 58 1/2"
2 borders 1 1/2" x 56 1/2"

Cut (4) squares 8 1/2" x 8 1/2"

4333-B 1 yard Blue Clamshell Print (outer border blocks)

Cut (8) strips 2 1/2" x WOF, pieced to make the following:
2 borders 2 1/2" x 62 1/2"
2 borders 2 1/2" x 58 1/2"

Cut (4) squares 8 1/2" x 8 1/2"

4335-P 1 yard Light Purple Posies (blocks, binding)

Cut (8) 2 1/2" x WOF strips for binding

Cut (4) squares 8 1/2" x 8 1/2"

4335-T 1 1/2 yards Teal Posies (block corners)

Cut (196) squares 3" x 3"

Fat 1/4 yard of each fabric below:

4332-B Light Blue Spring Leaves (blocks)

4332-P Light Purple Spring Leaves (blocks)

4333-G Green Clamshell Print (blocks)

4334-B Medium Blue Floral Grid (blocks)

4335-B Dark Blue Posies (blocks)

From each:

Cut (4) squares 8 1/2" x 8 1/2"

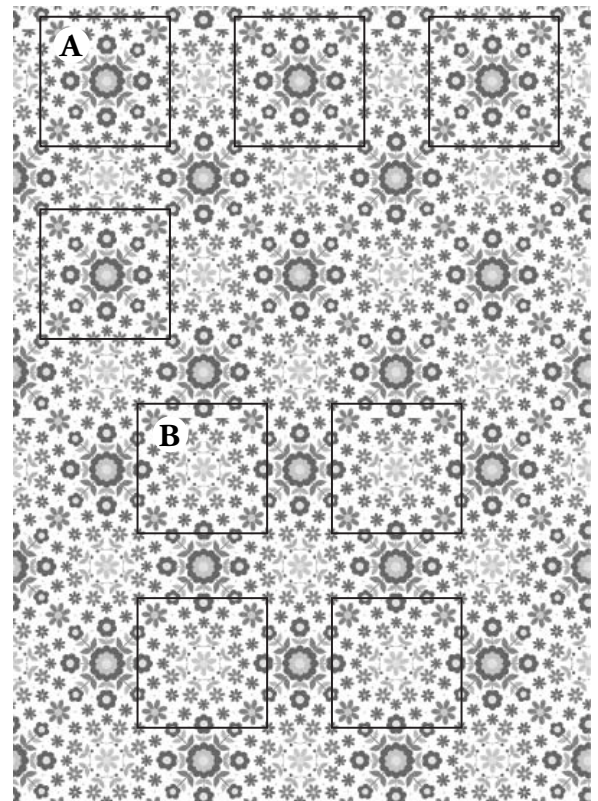
* Fabric required for backing.

*4334-LB 4 yards White Floral Grid Print (backing)

Cut and piece to fit quilt top with 4" overlap on all sides.

Making & Assembling the Quilt

- Fussy-cutting Prints** Referring to the Fussy-cutting Diagram, fussy-cut 8 squares, each 8 1/2" x 8 1/2", from the white floral print. Note that 4 are cut with the large wreath of flowers (block A) and 4 with the small wreath of flowers (block B). When cutting the squares, be careful that you don't cut into the surrounding fabric. Likewise, fussy-cut 9 squares from the dark blue floral print—5 block A and 4 block B. Cut the blue clamshell print border strips from the same place on the crosswise print so that every border strip is the same.



Fussy-cutting Diagram

Fancy Free Quilt

Making & Assembling the Quilt

2. Draw a diagonal line on the wrong side of each 3" teal square. Referring to Diagram 1, position a marked 3" square on an 8½" square, right sides together, aligning raw edges at one corner. Stitch on drawn line; trim away and discard excess fabric. Press open. Repeat on all 4 corners of the large square, watching the orientation of sewing lines. Make a total of 49 blocks like this.
3. Refer to the Quilt Diagram throughout the assembly. Arrange the blocks on a large flat surface in 7 rows of 7 blocks each, paying attention to placement of the fussy-cut white floral and dark blue floral A and B blocks. Join the blocks into rows. Press seam allowances in alternating rows in opposite directions. Stitch rows together.
4. Sew shorter green border strips to opposite sides of quilt. Sew longer strips to top and bottom.
5. Prepare the blue clamshell print borders as follows. The strips must be cut at a place that, when sewn together, the print will be continuous. Align the ¼" mark on a rotary

ruler with the centers of a vertical row of clamshells at the right end of a strip. Rotary cut along the right edge of the ruler to leave a ¼" seam allowance (Diagram 2). On the left end of a second strip, position the ruler in exactly the same spot of the print, but this time, cut to the left of the ruler as shown to leave a ¼" seam allowance. With right sides together, sew the 2 strips together through the center of the clamshells. Press open and be sure that the print looks continuous (Diagram 3). If it does not, repeat the steps until you are pleased. Repeat for all 4 borders. Sew borders to the sides of the quilt, and trim the ends even with the top and bottom of the quilt. Sew borders to the top and bottom and trim.

Finishing the Quilt

6. Layer quilt with batting and backing. Quilt in the ditch around borders and blocks. Quilt around the printed motifs in the fussy-cut 8½" squares. Bind to finish the quilt.

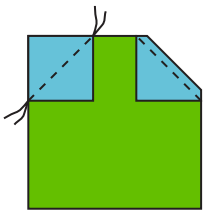
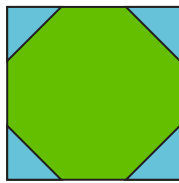


Diagram 1



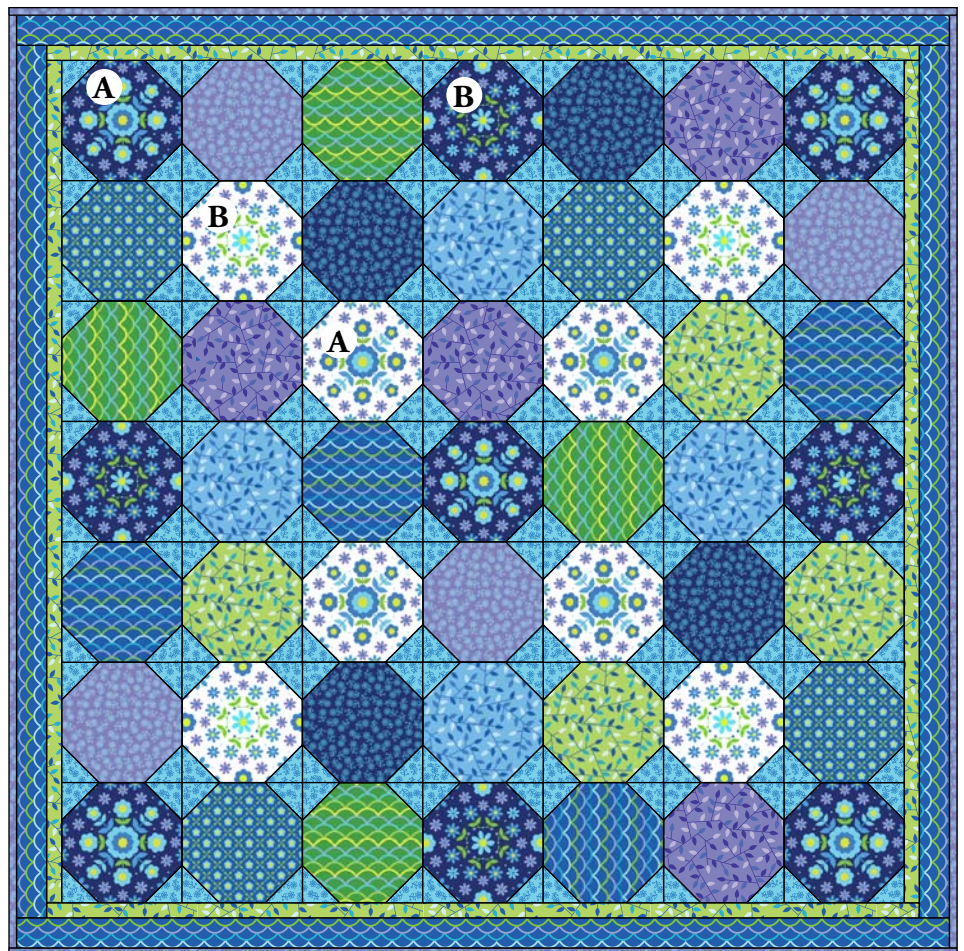
Block
Make 49



¼" ¼"
Diagram 2



Diagram 3



Quilt Diagram

1384 Broadway
New York, NY 10018
(800) 223-5678
www.andoverfabrics.com

Fancy Free

by Erinn Kennedy



makower uk®



4331-B



4332-B



4332-G



4332-P



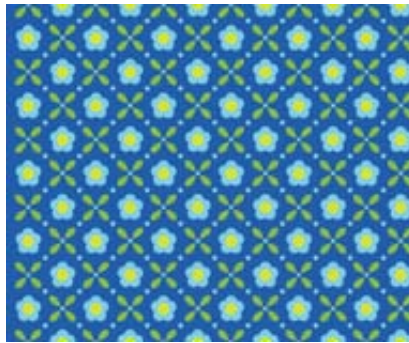
4333-B



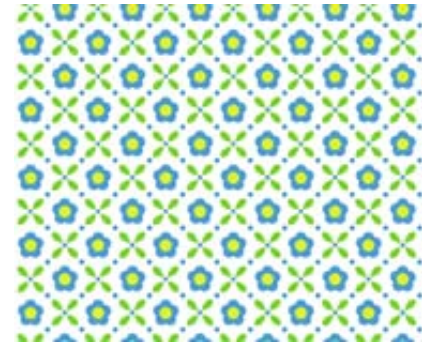
4333-G



4331-LB



4334-B



4334-LB



4335-B



4335-P



4335-T

All fabrics are used in quilt pattern. Fabrics shown are 25% of actual size.

Free Pattern Download Available at www.andoverfabrics.com