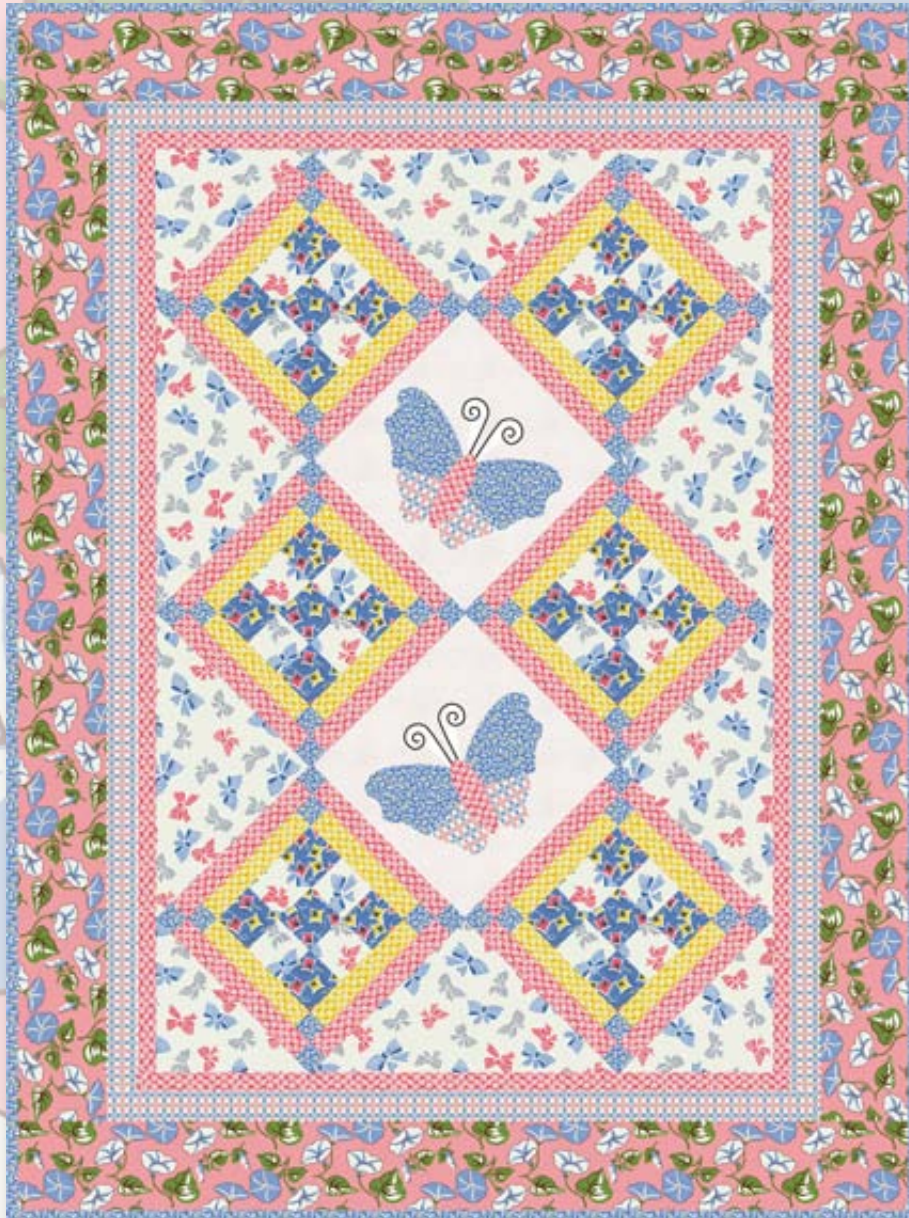


# Feedsack Morningsong



Finished size: 60½" x 81¾"

*Featuring the*  
**Feedsack Morningsong  
Collection**

by **Gloria Leonard Hall**

Quilt designed by **Jean Ann Wright**



**makower uk**®

1384 Broadway · New York, NY 10018

(800) 223-5678 · [www.andoverfabrics.com](http://www.andoverfabrics.com)

# Feedsack Morningsong Quilt

Introducing Andover Fabrics new collection: Feedsack Morningsong by Gloria Leonard Hall

Quilt designed by Jean Ann Wright

Quilt finishes 60½" x 81¾"  
6 Nine Patch Blocks: 15" x 15"  
2 Butterfly Blocks: 15" x 15"

## Planning

Pay homage to our quilting foremothers when you stitch this Depression-era quilt. Traditional Nine Patch blocks with a bit of extra piecing frame the lovely butterflies. To make it even more vintage, use black thread and hand blanket stitches to embellish the appliqué. What a lovely nap quilt for anyone, or give this twin-bed beauty to a girl who is as charming as the quilt.

## Fabric Requirements & Cutting Directions

**Note:** All borders include 2" extra length plus seam allowances. WOF designates the width of fabric from selvedge to selvedge (approximately 42" wide).

### 4943-E 2½ yards Morning Glory Novelty Print (outer border)

Cut (2) borders 6½" x 72¼", cut lengthwise  
Cut (2) borders 6½" x 63", cut lengthwise

### 4944-B 1¾ yards Pink & Blue Bows (setting triangles, Nine Patch blocks)

Cut (2) 22½" squares, cut in half diagonally twice to make 8 quarter-square triangles (2 are not needed)  
Cut (2) 11½" squares, cut in half diagonally to make 4 half-square triangles  
Cut (24) 3½" squares

### 4945-B ¾ yard Pink & Yellow Kites on Blue (Nine Patch blocks)

Cut (30) 3½" squares

### \*4946-B ⅝ yard Pink & Blue Checks (butterfly wings, middle border)

Cut (6) strips 2½" x WOF, pieced to make the following:  
2 borders 2½" x 68¼", 2 borders 2½" x 51"  
Cut (4) butterfly bottom wings

### 4947-E 1 yard Pink & White Petals (Nine Patch blocks, butterfly body, inner border)

Cut (6) strips 1½" x WOF to make the following:  
2 borders 1½" x 66¼", 2 borders 1½" x 47"  
Cut (24) strips 2" x 12½" for blocks  
Cut (2) butterfly bodies

### 4947-Y ¾ yard Yellow & White Petals (Nine Patch blocks)

Cut (24) strips 2" x 9½", cut crosswise

### 4948-B 1 yard Blue with Yellow Posies (Nine Patch blocks, butterfly wings, binding)

Cut (8) strips 2½" x WOF for binding  
Cut (48) 2" squares for blocks  
Cut (4) butterfly top wings

### 1867-L2 ½ yard White Dimples (butterfly block background)

Cut (2) 16½" squares (to be trimmed after appliqué)

\* Additional fabric required for backing.

### \*4946-B 5 yards Pink & Blue Checks (backing)

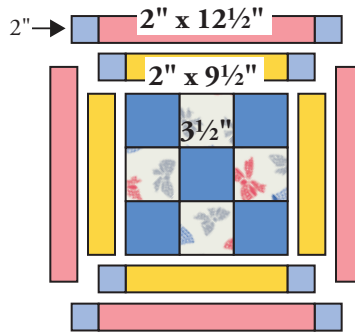
Cut 2 panels 35" x 90", and piece to fit quilt top with overlap on all sides.

## Making & Assembling the Quilt

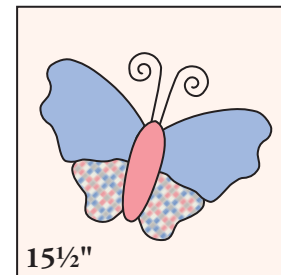
1. Referring to the Nine Patch Block diagram, join 3½" squares to make a block center. Sew the strips and 2" squares to the center to make a block. Make 6 Nine Patch blocks.
2. If you choose to fuse the butterfly appliqué, trace the butterfly wings and bodies onto paper side of paper-backed fusible web. Following manufacturer's instructions, fuse traced patterns to wrong side of fabrics. Cut out parts on the drawn lines. Use the full-size pattern to help position the patches in the center of each background square. Fuse each patch to the square, following manufacturer's instructions. Finish the edges with a decorative machine stitch using contrasting thread, or use an invisible thread with a machine hem stitch. Add the antennae with black thread using a narrow satin stitch. Press from the back, and trim to 15½".

# Feedsack Morningsong Quilt

If you choose to hand stitch the butterflies, cut out the fabric patches with scant  $\frac{1}{4}$ " turn-under allowances. Starting with the bottommost patch, position and hand stitch the patches one at a time to the background square. Use two rows of chain stitches side by side to embroider the antennae. Press from the back, and trim to  $15\frac{1}{2}$ ".



**Nine Patch Block**  
Make 6

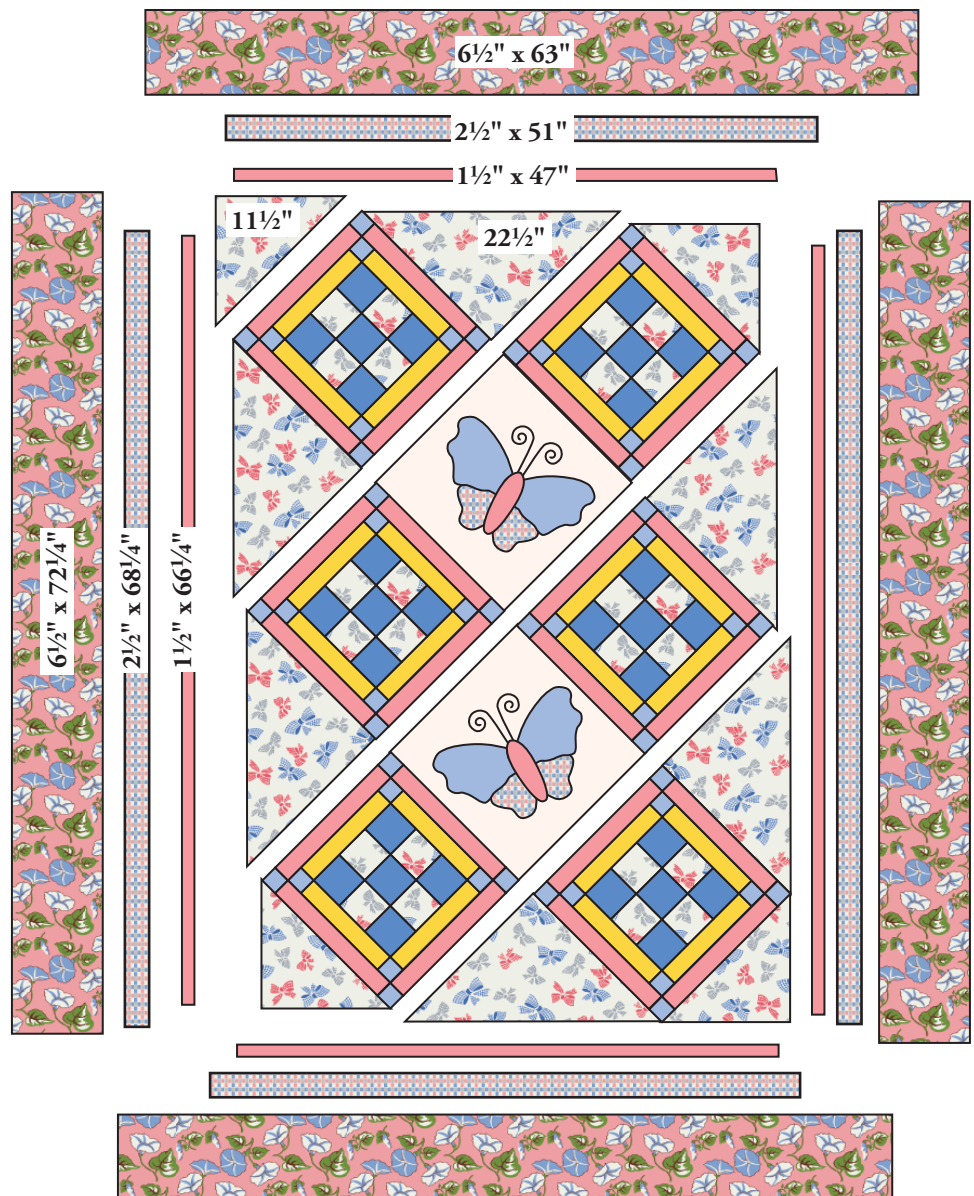


**Butterfly Block**  
Make 2

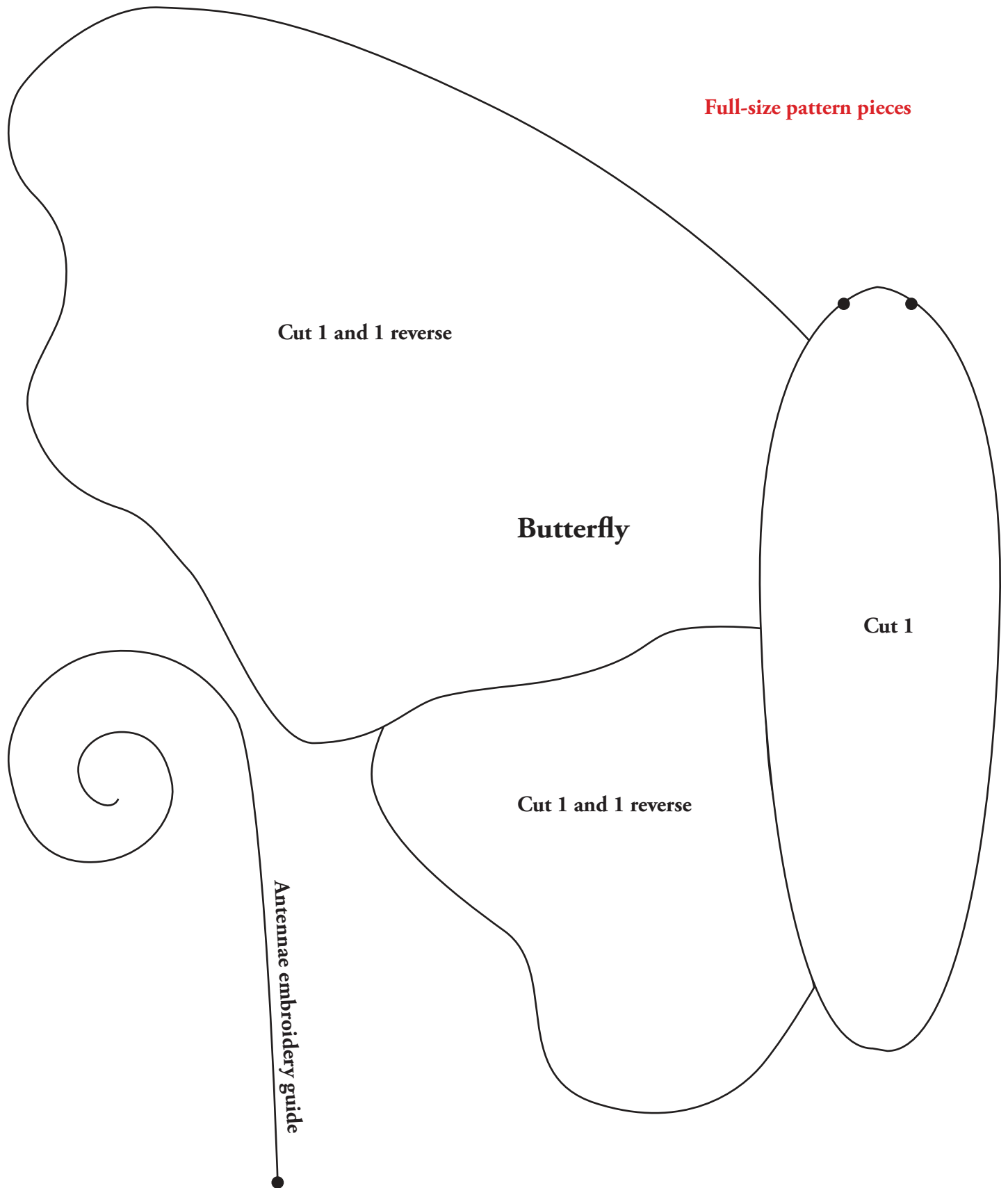
- Refer to the Quilt Diagram throughout the assembly. Join the blocks and large setting triangles in diagonal rows as shown, turning the butterfly blocks as you wish. Press the seam allowances away from the Nine Patch blocks. Join the rows. Sew the smaller setting triangles to each corner.
- Following the diagram, sew long pink and white petal borders to opposite sides; trim ends even with the top and bottom of the quilt. Sew the shorter top and bottom borders to the quilt and trim. Likewise, sew on the pink and blue checks borders, and finally the morning glory borders.

## Finishing the Quilt

- Layer quilt with batting and backing. Quilt in the ditch around borders and block patches. Outline quilt  $\frac{1}{4}$ " inside the nine 3" squares in the Nine Patch blocks. Quilt around the butterflies. Quilt a grid in the background around the butterflies. Quilt a motif of your choice in the setting triangles and outer border. Bind to finish the quilt.



**Quilt Diagram**



# Feedsack Morningsong

by Gloria Leonard Hall



makower uk®



4943-E\*



4944-B\*



4945-B\*



4947-E\*



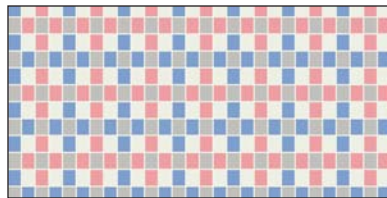
4947-Y\*



1867-L2\*



1867-E17



4946-B\*



4948-B\*



1867-Y



4943-N



4944-N



4945-G



4947-G



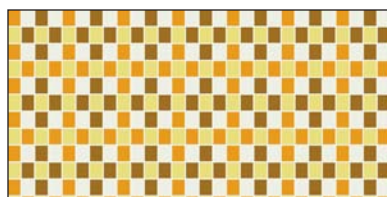
4947-N



1867-YL



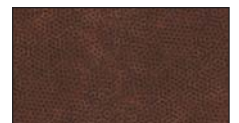
1867-O1



4946-N



4948-O



1867-N8

\*Indicates fabric used in quilt pattern. Fabrics shown are 25% of actual size.