

Flower Doodle



makower uk®

1384 Broadway
New York, NY 10018
(800) 223-5678

www.andoverfabrics.com

Fabrics by
Kim Schaefer

Quilt designed by
Kim Schaefer
Quilt size: 63" x 83"

Revised 5/11/12

Flower Doodle Spring Quilt

Introducing Andover Fabrics new collection: Good Seasons by Kim Schaefer
Quilt designed by Kim Schaefer

Quilt finishes 63" x 83"

Fabric Requirements

	Yardage				
*Fabric A	sash	1 1/8 yards	5791-T		
Fabric B	sash, border	2 1/8 yards	5792-K		
Fabric C	sash	1/4 yard	5793-G		
Fabric D	sash	1/2 yard	5793-T		
Fabric W	binding	5/8 yard	3135-K		
Fabrics E-V	piecing	fat 1/8 each of the following:			
5794-K	5794-O	5794-P	5794-T	5795-G	
5795-K	5795-R	5795-T	5797-P	5797-T	
5797-Y	3135-G3	3135-LG1	3135-LP	3135-O3	
3135-R5	3135-W	3135-Y5			
*Backing (A)		3 3/4 yards	5791-T		

Sassy, bold, and funky are words that spring to mind when you see this colorful lap-size quilt. The bright prints form a dazzling kaleidoscope of color and movement. Turn your favorite 'tween or teen onto quilting with this fun beginner's quilt. The oh-so-easy piecing is all strips.

Cutting Directions

Note: All measurements are cut sizes and include 1/4" seam allowances. A fat 1/8th is a 9" x 20"-22" cut. Borders and sashes are cut the exact lengths required plus 1/4" seam allowances. WOF designates the width of fabric from selvedge to selvedge (approximately 42" wide).

- Fabric A** Cut (4) strips 8 1/2" x WOF, cut crosswise and pieced to make (2) sashes 8 1/2" x 72 1/2"
- Fabric B** Fussy-cut (4) sashes 3 1/2" x 72 1/2", cut lengthwise from leafy stripe
Fussy-cut (2) borders 6 1/2" x 72 1/2", cut lengthwise from black stripe
Fussy-cut (2) borders 6 1/2" x 56 1/2", cut lengthwise from black stripe
- Fabric C** Cut (4) squares 8 1/2" x 8 1/2"
- Fabric D** Cut (4) squares 8 1/2" x 8 1/2"
- Fabric E-V** *Cut (144) rectangles 2 1/2" x 4 1/2", cut crosswise
- Fabric W** Cut (7) strips 2 1/2" x WOF for binding
- Backing** Cut (2) panels 40" x 64", pieced to fit quilt top with overlap on all sides

*Read Step 1 before cutting patches.

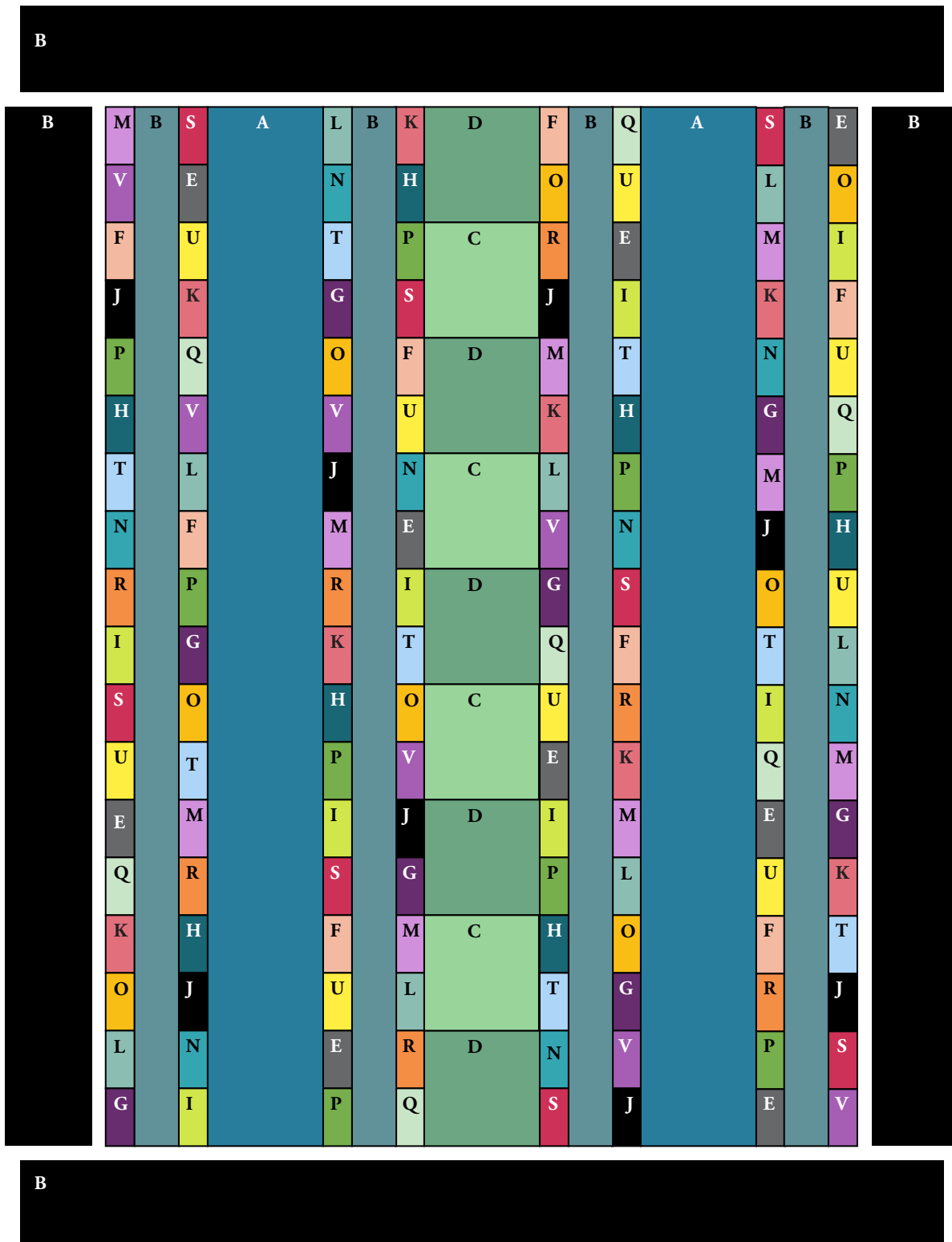
Making and Assembling the Quilt

1. If you wish to make a quilt exactly as shown, cut 7 rectangles 2 1/2" x 4 1/2" from Fabrics H, Q, R, and V. Cut 9 rectangles from Fabrics E, M, P, and U. From all other fabrics E-V, cut 8 rectangles each. If you prefer to make your own version, cut 8 rectangles from each of the 18 fabrics. You need a total of 144 rectangles.
2. Refer to the Quilt Diagram for the following steps. Arrange the 144 rectangles from Fabrics E-V into 8 vertical rows of 18 patches each, arranging as desired or as shown on the diagram. Press seam allowances toward the bottom of the strips.
3. Join 4 C and 5 D squares alternately to make the center vertical row. Press the seam allowances toward the top of the strip.
4. Piece the Fabric A strips to make 2 sashes each 8 1/2" x 72 1/2". Hint: Cut these sashes the same length as the pieced rows from Steps 1 and 2.
5. Join the 8 narrow pieced rows, the center pieced row, the 2 pieced sashes, and Fabric B leafy sashes in the order shown. Press seam allowances away from the narrow pieced rows.
6. Sew long Fabric B black border strips to the sides. Sew short border strips to the top and bottom.

Flower Doodle Quilt

Finishing the Quilt

7. Layer the quilt with batting and backing and baste. Quilt in the ditch around borders, sashes, and rectangles. Quilt around the printed motifs in Fabric A-D patches. Bind to finish the quilt.



Quilt Diagram

Flower Doodle

by Kim Schaefer



makower uk®



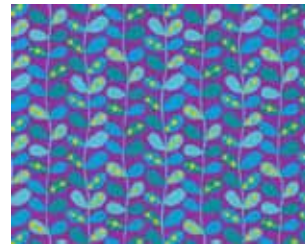
5791-T



5794-O



5794-T



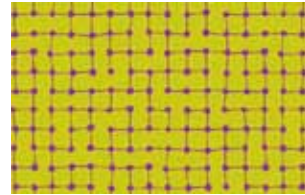
5794-P



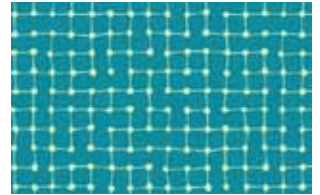
5794-K



5792-K



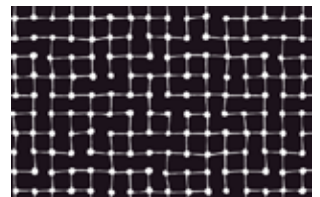
5795-G



5795-T



5795-R



5795-K



5797-Y



5797-P



5797-T



5793-G



5793-T

*From the
 Tic Tac
 collection
 by Kim Schaefer*



3135-Y5



3135-O3



3135-LP



3135-R5



3135-W



3135-LG1



3135-G3



3135-K