

Full Moon Lagoon

FABRICS BY MO BEDELL



Quilt designed by:
Mo Bodell

Quilt Size: **64" x 70"**

andoverfabrics.com



About Full Moon Lagoon

Spend a day at the beach with this fresh and cool collection of brightly colored hues from under the deep blue sea. We can dream the day away with seahorses, seaweed, bubbles and tropical foliage.



andover

makower uk
The Henley Studio

Free Pattern Download Available

1384 Broadway New York, NY 10018
Tel. (800) 223-5678 • andoverfabrics.com

Full Moon Lagoon



Introducing Andover Fabrics new collection: [Full Moon Lagoon](#) by Mo Bedell

Quilt designed by Mo Bedell

Quilt finishes 64" x 72"
25 Full Blocks: 12" x 12"
5 Half Blocks: 6½" x 12½"

Take a virtual trip under the sea when you make this charming twin-bed size quilt. The simple blocks are cleverly disguised in the overall design that is pieced in vertical rows. The novelty prints include seahorses, seaweed, bubbles, and tropical foliage. What a fun quilt to make for your favorite mermaid.

Cutting Directions

Note: Read assembly directions before cutting patches. All measurements are cut sizes and include seam allowances. Borders are cut the exact lengths required plus ¼" seam allowances. WOF designates the width of fabric from selvedge to selvedge (approximately 42" wide).

- Fabric A** Cut (2) squares 12½" x 12½"
Cut 2 side borders 2½" x 66½"
Cut (2) top/bottom borders 3½" x 64½"
- Fabric B** Cut (12) rectangles 6" x 7"
Cut (7) strips 2½" x WOF for binding
- 2 Fabric C** From each: Cut (2) squares 12½" x 12½"
Cut (1) rectangle 6½" x 12½"
- 3 Fabric D** From each: Cut (1) square 12½" x 12½"
Cut (1) rectangle 6½" x 12½"
- 2 Fabric E** From each: Cut (3) squares 12½" x 12½"
- 5 Fabric F** From each: Cut (2) squares 12½" x 12½"
- 4 Fabric G** From each: Cut (12) rectangles 6" x 7",
cut lengthwise (printed stripe is parallel to the 7" side)
- Backing** Cut (2) panels 40" x 72", pieced horizontally to fit quilt top with overlap

Fabric Requirements

		Yardage			
Fabric A	centers, border	1½ yards	5999-T		
Fabric B	corners, binding	1 yard	6004-E		
2 Fabric C	block centers	¾ yard ea.	6001-E	6002-T	
3 Fabric D	block centers	¾ yard ea.	6002-EL	6003-EP	*6003-T
2 Fabric E	block centers	¾ yard ea.	5998-E	5998-T	
5 Fabric F	block centers	¾ yard ea.	5998-TG	5999-E	6000-T
			6001-T	6002-TE	
4 Fabric G	block corners	½ yard ea.	6004-EL	6004-EO	
			6004-T	6004-TG	
*Backing		4 yards	6003-T		

Making the Quilt

- Referring to Diagram 1, mark dots along the edges of a 12½" square as shown (5" along the sides from each corner and 4" along the top and bottom from each corner). Align a rotary ruler across a corner from dot to dot and cut as shown. Repeat on all 4 corners. Cut each 12½" square like this. Trim the 6½" x 12½" rectangles along the bottom only (Diagram 2).
- The patches for block corners are cut oversized, stitched to the squares from Step 1, and then trimmed. Referring to Diagram 3, cut 6 of the 6" x 7" rectangles of one fabric diagonally as shown. Cut the other 6 rectangles of the same fabric in the opposite diagonal as shown. Repeat this for Fabric B and Fabric G rectangles. The 4 different triangles are numbered 1-4 to help with placement later. To prevent the triangles from getting mixed up, keep them in piles of like triangles as they are cut. Label the appropriate piles #1, #2, #3, or #4.
- Study the Quilt Diagram and quilt photograph carefully and arrange the 12½" squares in 5 vertical columns on a flat surface in the order shown. Position the 6½" x 12½" patches at the top of rows 1, 3, and 5, and at the bottom of rows 2 and 4. Position 4 triangles from Step 2 in the corners of each block center—triangles #3 and #2 of one fabric on the left side of the square, and triangles #1 and #4 of a second fabric on the right side of the square.

Full Moon Lagoon Quilt

Add triangles in this manner to all block centers, positioning the fabric triangles to form vertical zigzags of color as shown. Position triangles by the $6\frac{1}{2}'' \times 12\frac{1}{2}''$ rectangles where needed. There will be a few leftover triangles.

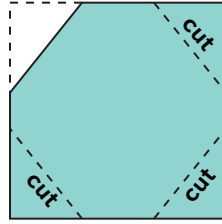


Diagram 1



Diagram 2

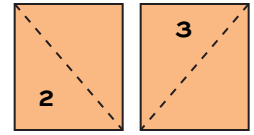


Diagram 3

- Stand back and examine the entire design. When you are certain of color placement, remove one square and its 4 triangles from the quilt. With right sides together, position the correct triangle on the cut corner of the square so there is an equal amount of overhang on each end as shown (Diagram 4). Stitch the triangle to the square. Repeat this on all corners. Press triangles away from the center. Trim the block to a $12\frac{1}{2}''$ square. Sew 2 triangles to each trimmed $6\frac{1}{2}'' \times 12\frac{1}{2}''$ rectangle. Trim the parts of the triangles that stick out. Make 25 full blocks and 5 half blocks. Replace each block and half block back in place once it's finished.

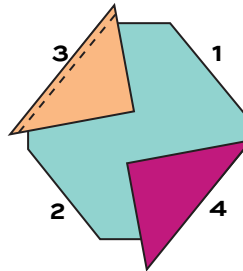


Diagram 4

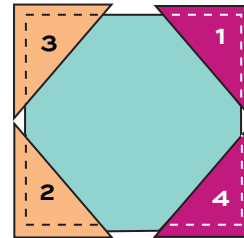


Diagram 5

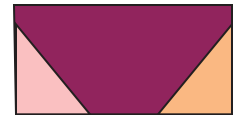


Diagram 6

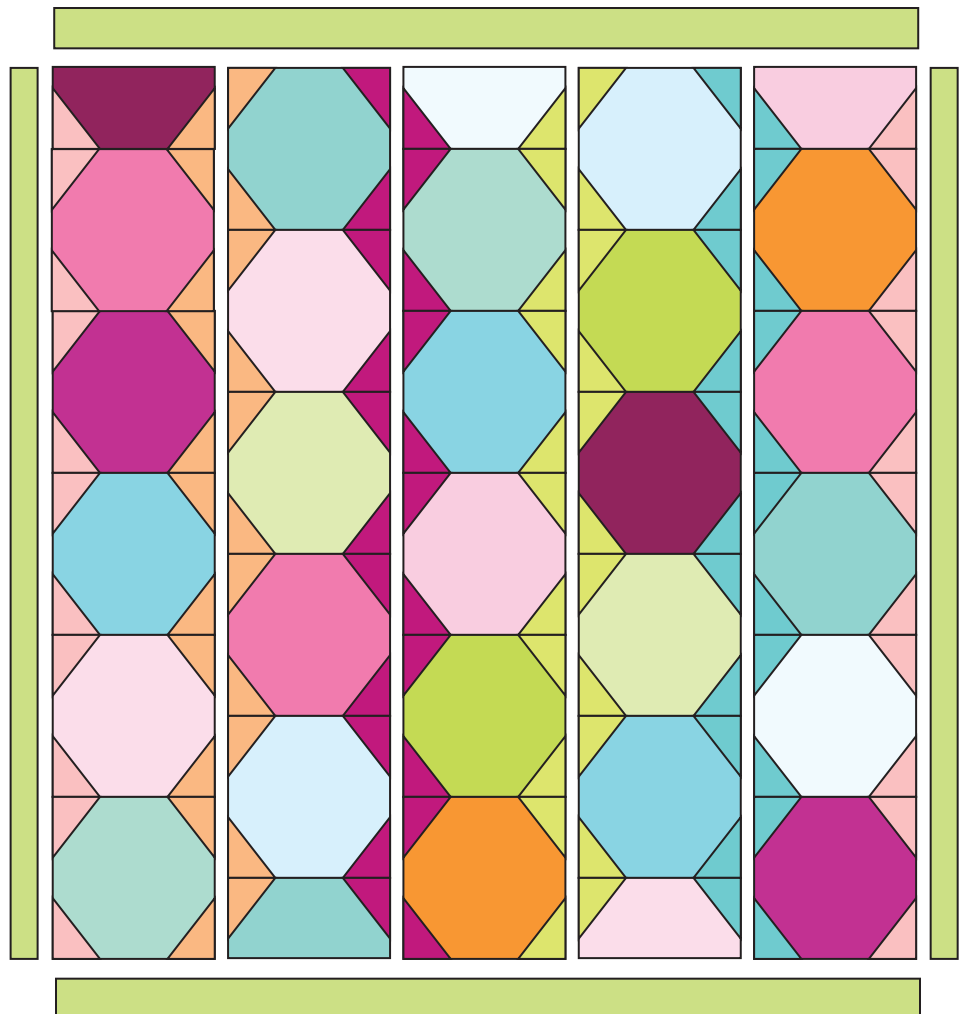
Half Block – Make 5

Full Block – Make 25

- Referring to the Quilt Diagram, join the blocks in 5 vertical rows. Join the rows.
- Sew the $2\frac{1}{2}''$ borders to the sides. Sew the $3\frac{1}{2}''$ borders to top and bottom.

Finishing the Quilt

- Layer the quilt with batting and backing and baste. Quilt in the ditch around borders and block centers. Quilt around the printed motifs in the block centers. Quilt zigzag lines following the vertical zigzag patches between block centers. Bind to finish the quilt.



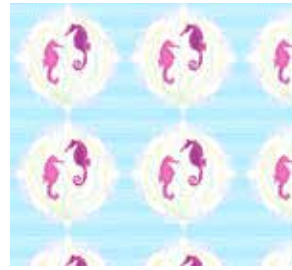
Quilt Diagram

Full Moon Lagoon

FABRICS BY MO BEDELL



5997-T*



5998-T*



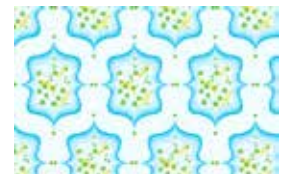
5999-T*



6000-T*



5998-TG*



6001-T*



6002-T*



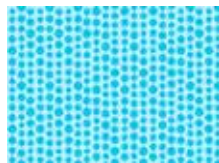
6002-TE*



6003-T*



6003-TG



6004-T*



6004-TG*



5997-E



5998-E*



5999-E*



6000-EP



6001-E*



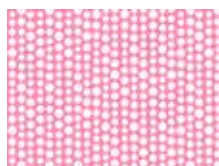
6002-EL*



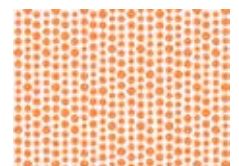
6003-EP*



6004-E*



6004-EL*



6004-EO*

*Indicates fabrics used in quilt pattern. Fabrics shown are 10% of actual size.

andover

makower uk
The Henley Studio

Free Pattern Download Available

1384 Broadway New York, NY 10018
Tel. (800) 223-5678 • andoverfabrics.com