

Indigo Cheddar II

ANDOVER FABRICS



Madison Quilt designed by: **Janet Houts**

Quilt Size: **72" x 88"** • Skill Level: **Intermediate**

Madison Quilt

Introducing Andover Fabrics new collection: **Indigo Cheddar II** by Andover Fabrics

Quilt designed by Janet Houts

Quilt finishes 72" x 88"

79 Blocks: 8" x 8"

What an interesting way to mix complimentary colors blue and orange. The blocks form a kind of frame around the interior blocks and solid squares. Light large and small triangles move the eye in a diagonal direction.

Cutting Directions

Note: Read assembly directions before cutting patches. All measurements are cut sizes and include ¼" seam allowances. A fat ¼ is an 18" x 20"-22" cut. WOF designates the width of fabric from selvedge to selvedge (approximately 42" wide).

2 Lights From each:

Cut (13) squares 8⁷/₈", cut in half diagonally to make 26 half-square triangles (Read Step 1 before cutting)

Cut (13) squares 4⁷/₈", cut in half diagonally to make 26 half-square triangles

1 Light

Cut (14) squares 8⁷/₈", cut in half diagonally to make 28 half-square triangles (27 triangles are used)

Cut (14) squares 4⁷/₈", cut in half diagonally to make 28 half-square triangles (27 triangles are used)

6 Florals From each:

Cut (3 or 4) squares 8¹/₂" (20 total)

11 Blue/Gold Prints From each:

Cut (8) squares 4⁷/₈", cut in half diagonally to make 16 half-square triangles (15 triangles are used)

4 Blue/Gold Prints From each:

Cut (9) squares 4⁷/₈", cut in half diagonally to make 18 half-square triangles

Binding

Cut (9) strips 2¹/₂" x WOF for binding

Backing

Cut (2) lengths 98" x WOF, pieced to fit quilt top with overlap on all sides

Fabric Requirements

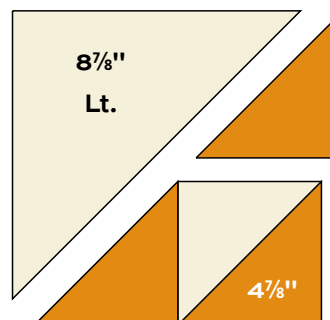
		Yardage	Fabric
2 Lights	blocks	1½ yards	
	1141-L 1145-L		
1 Light	blocks	1½ yards	
	1144-L		
6 Florals	set	fat ¼ each	
	1140-B 1140-L	1140-O	
	1143-B 1143-L	1143-O	
*11 Prints	blocks	fat ¼ each	
	1141-B 1141-O	1142-B 1142-L	
	1142-O 1144-B	1145-B 1146-B	
	1146-L 1146-O	1147-L	
*4 Prints	set	fat ¼ each	
	1144-O 1145-O	1147-B 1147-O	
Binding		¾ yard	1145-B
Backing		5½ yards	1143-L

*Blue and Gold Prints

Helpful: square acrylic ruler 8½" or larger

Making the Quilt

1. Refer to the Quilt Assembly for fabric combinations, or mix the light and blue/gold prints as you wish. Each block requires 1 large half-square triangle and 1 small triangle from a light fabric, and 3 small half-square triangles from a blue or gold fabric.
2. Referring to the block diagram, join a small light half-square triangle and a blue or gold half-square triangle. Press the seam allowance toward the darker patch. The pieced unit should measure 4½" square. Align the 90-degree corner of a colored triangle with the side of the white triangle. Sew patches together. Repeat with a second colored triangle. Press seam allowances away from the light triangle.



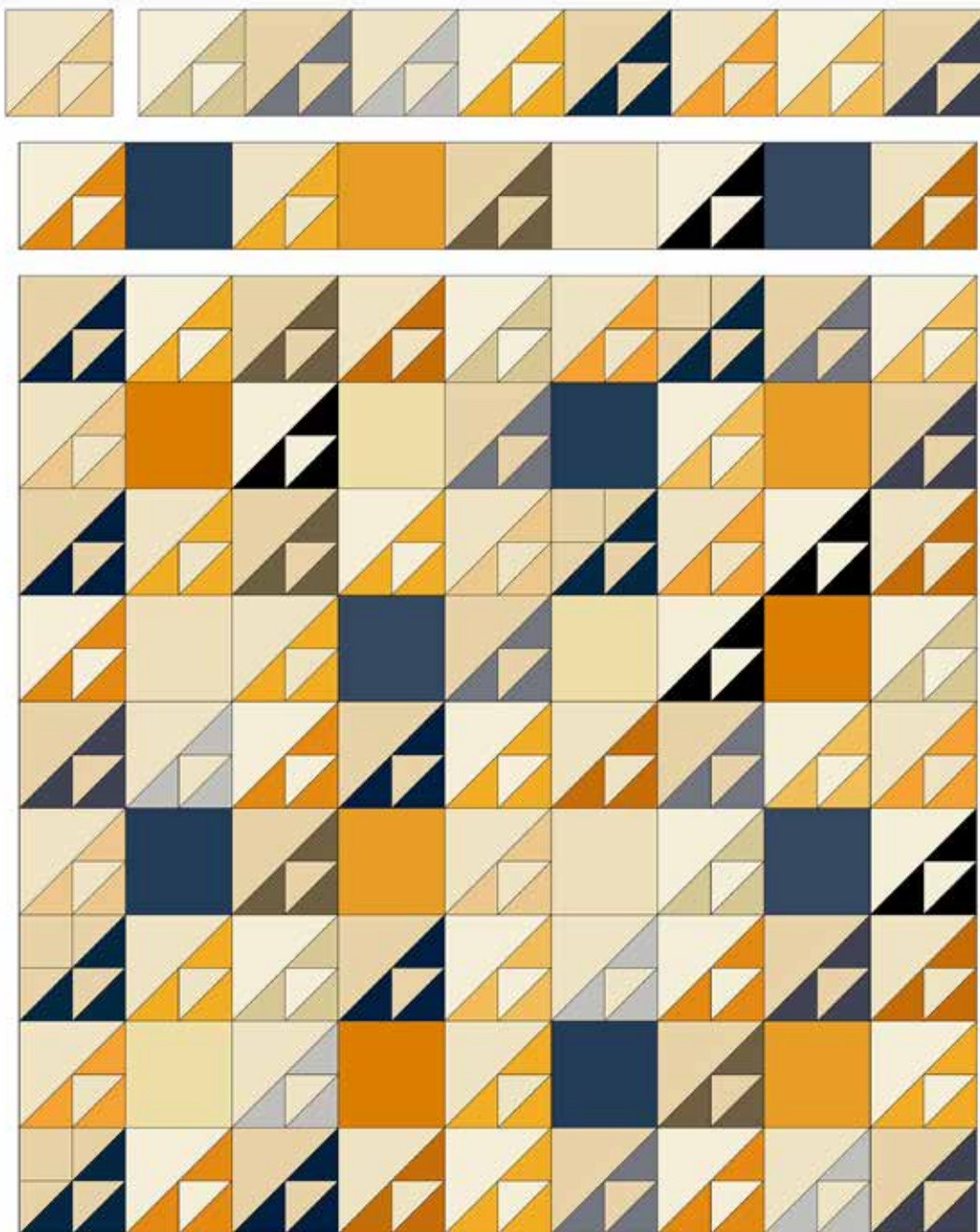
Block – Make 79

Madison Quilt

3. Fold the large light triangle in half, point to point, and mark the middle of the long bias edge. Align and pin this middle with the point of the light triangle on the pieced unit from Step 2. Sew the large triangle to the pieced unit. Press seam allowances toward the large light triangle. The block should measure $8\frac{1}{2}$ " square. If it does not, adjust your stitching and/or pressing methods.
4. Repeat these steps to make a total of 79 blocks.
5. Refer to the Quilt Assembly. Arrange the blocks and $8\frac{1}{2}$ " floral squares in 11 rows of 9 squares each. Look through a camera to be sure that the blocks are turned correctly and that no print is next to itself. Once you are satisfied with the arrangement, join the blocks in rows, and then join the rows.

Finishing the Quilt

6. Layer the quilt with batting and backing and baste. Quilt in the ditch around patches. Quilt around the printed motifs in the floral squares. Or, quilt an overall quilting motif. Bind to finish the quilt.



Quilt Assembly

Indigo Cheddar II ANDOVER FABRICS



1140-B



1140-L



1140-O



1141-B



1141-L



1141-O



1142-B



1142-L



1142-O



1143-B



1143-L



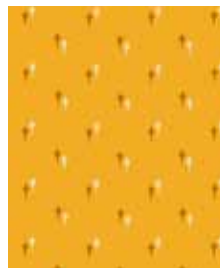
1143-O



1144-B



1144-L



1144-O



1145-B



1145-L



1145-O



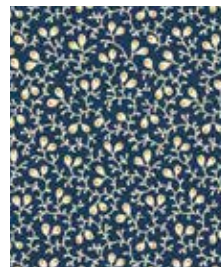
1146-B



1146-L



1146-O



1147-B



1147-L



1147-O

All fabrics are used in quilt pattern. Fabrics shown are 50% of actual size.

Free Pattern Download Available

1384 Broadway, 24th Floor, New York, NY 10018

Tel. (800) 223-5678 • andoverfabrics.com

12/15/23