

JAZZ



Quilt designed by Janet Houts
Finished size: 55" x 71"



Fabrics by Kathy Hall



makower uk

1384 Broadway
New York, NY 10018
(800) 223-5678

www.andoverfabrics.com

Jazz Quilt

Introducing Andover Fabrics new collection: Jazz by Kathy Hall
Quilt designed by Janet Houts

Quilt finishes: 55" x 71"
18 Pieced Blocks: 8" x 8"

Vivid prints in a riotous mix of colors give a bright rhythm to this colorful quilt. The lively outer border appears to be made with three prints, but it's all a matter of illusion since the border is cut from a novelty stripe. The piecing is easy enough for a beginner with sewing experience. Choose from three fun colorways.

Fabric Requirements

		Yardage	Black	Blue	Purple
Fabric A	squares	1¼ yards	5451-T	5451-G	5451-N
Fabric B	border 2	2¼ yards	5452-T	5452-G	5452-N
Fabric C	blocks	1 yard	5454-T	5454-G	5454-N
Fabric D	blocks	½ yard	5455-O	5455-G	5455-N
*Fabric E	border 1	1 yard	5445-MO	5445-MK	5445-MN
Fabric F	blocks	fat ¼ yard	5445-MV	5445-MDG	5445-MY
Fabric G	blocks	fat ¼ yard	5445-MT	5445-MG	5445-ML
Fabric H	backing	3½ yards	5453-T	5453-G	5453-N

*includes binding

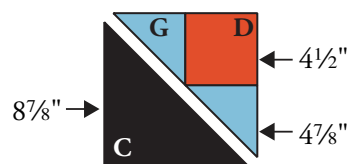
Cutting Directions

Note: A fat ¼th yard is an 18" x 20"-22" cut. Mitered borders include 2" extra length plus seam allowances. WOF designates the width of fabric from selvedge to selvedge (approximately 42" wide).

- Fabric A** Cut (17) squares 8½" x 8½"
- Fabric B** Fussy-cut (2) borders 6½" x 73½", cut lengthwise
Fussy-cut (2) borders 6½" x 57½", cut lengthwise
- Fabric C** Cut (9) squares 8⅞" x 8⅞", cut in half diagonally to make 18 half-square triangles
- Fabric D** Cut (18) squares 4½" x 4½"
- Fabric E** Cut (2) borders 2" x 61½", cut crosswise and pieced
Cut (2) borders 2" x 45½", cut crosswise and pieced
Cut (7) strips 2½" x WOF for binding
- Fabric F** Cut (8) squares 4⅞" x 4⅞", cut in half diagonally to make 16 half-square triangles
- Fabric G** Cut (10) squares 4⅞" x 4⅞", cut in half diagonally to make 20 half-square triangles
- Backing** Cut (2) panels 40" x 63", pieced to fit quilt top with 4" overlap on all sides.

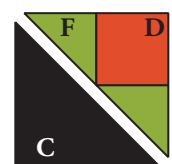
Making and Assembling the Quilt

- Referring to the Block 1 Diagram, sew 2 Fabric G half-square triangles to sides of a Fabric D square. Hint: Align the corner of a triangle with the corner of the square. The points of the triangle will extend off the square. Press the seam allowances away from the Fabric D square. Add the second triangle in the same manner. This pieced unit should match the larger Fabric C half-square triangle exactly. If it does not, adjust the line of stitching as needed. Sew the pieced unit to the Fabric C triangle to make Block 1. Press the seam allowances toward the Fabric C triangle. The block should measure 8½" from edge to edge. Make 10 Block 1.
- Referring to the Block 2 Diagram, sew 2 Fabric F half-square triangles to a Fabric D square as described above. Sew this pieced unit to a Fabric C triangle to make Block 2. Make 8 Block 2.



Make 10

Block 1 Diagram



Make 8

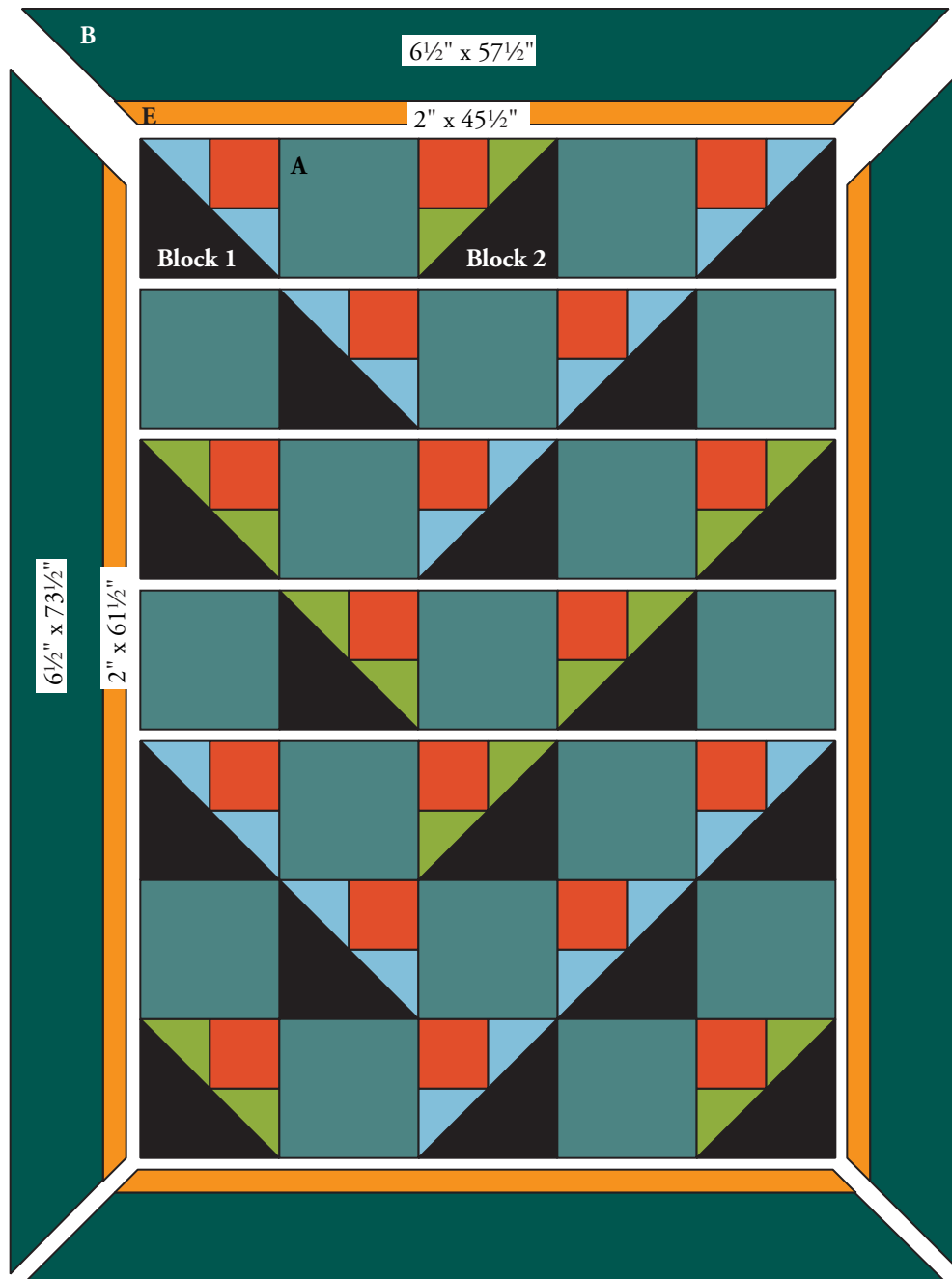
Block 2 Diagram

Jazz Quilt

3. Refer to the Quilt Diagram throughout the assembly. Arrange the 18 blocks and 17 Fabric A squares in 7 rows of 5 blocks each in the order shown, rotating the blocks to form the overall design. Join the blocks into rows, pressing the seam allowances in opposite directions in alternating rows. Join the rows.
4. Sew a long Fabric E border strip to one side of a long Fabric B border strip to make a pieced border. Sew to the side of the quilt, stopping stitching $\frac{1}{4}$ " from the corners of the quilt. Repeat on the other side.
5. Sew a short Fabric E border to one side of a short Fabric B border. Sew to the top of the quilt. Repeat on the bottom. Miter the corners and trim the excess.

Finishing the Quilt

6. Layer the quilt with batting and backing and baste. Quilt in the ditch around borders and block patches. Quilt around the printed motifs in the large squares. Bind with Fabric E to finish the quilt.

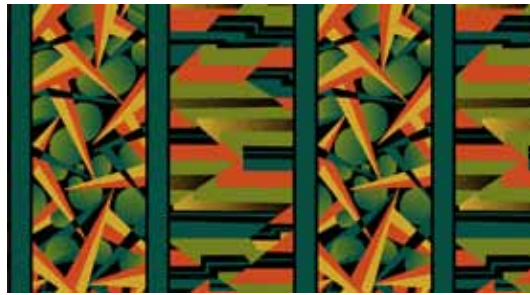


Quilt Diagram

Jazz by Kathy Hall



5451-T*



5452-T*



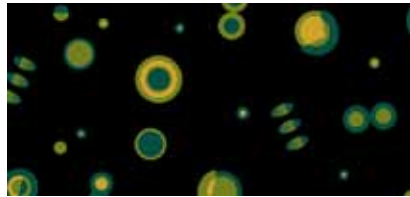
5453-T*



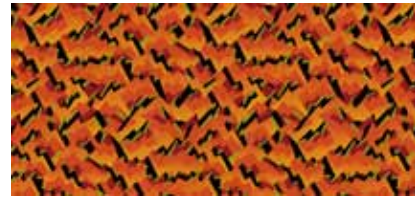
5445-MO*



5445-MT*



5454-T*



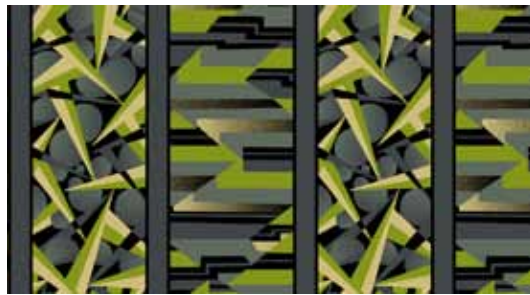
5455-O*



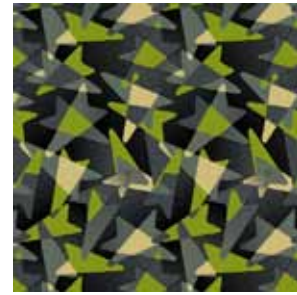
5445-MV



5451-G



5452-G



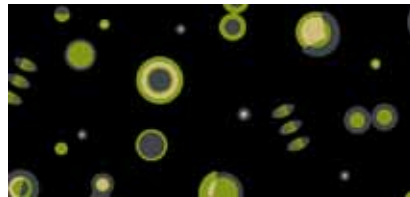
5453-G



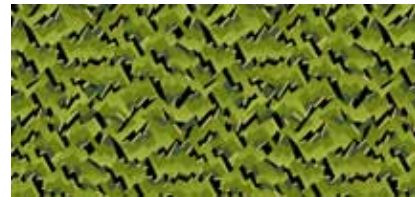
5445-MG*



5445-MDG



5454-G



5455-G



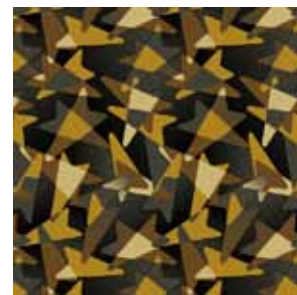
5445-MK



5451-N



5452-N



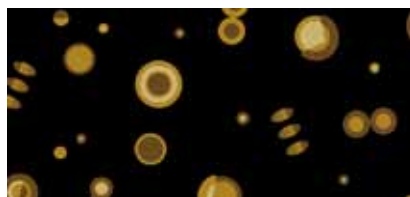
5453-N



5445-ML



5445-MY



5454-N



5455-N



5445-MN