



*Fabrics
by
Gail Kessler*

Lady Lancaster



makower uk

1384 Broadway
New York, NY 10018
(800) 223-5678

www.andoverfabrics.com

Quilt designed by Jean Ann Wright
Finished size: 73" x 81"

9/6/10

Lady Lancaster Quilt

Introducing Andover Fabrics new collection: Lady Lancaster by Gail Kessler
Quilt designed by Jean Ann Wright

Quilt finishes 72" x 80"
1 center star block 20" x 20"
26 star blocks 8" x 8"

Whether you choose the feminine red and cream or the sophisticated black colorway, you'll make an elegant statement with Lady Lancaster. We'll give you great tips for making the blocks and borders fit together perfectly.

Fabric Requirements

		Yardage	Red	Black
Fabric A	center panel	¾ yards	5293-L	5293-K
Fabric B	border #6	2½ yards	5294-L	5294-K
Fabric C	center, border blocks	1⅛ yards	5296-E	5295-K
Fabric D	center, border blocks	⅝ yard	5296-Y	5296-Y
Fabric E	border #2	1½ yards	5297-R	5297-K
Fabric F	center, border blocks	1⅜ yard	5295-L	5296-C
Fabric G	center, border blocks	1¾ yard	5299-L	5299-K
Fabric H*	border #1, 3, 5	1¼ yards	1867-G4	1867-K2
	*includes binding			
Backing		5 yards	5297-R	5297-K

Cutting Directions

Note: Measurements for borders include 2" extra plus ¼" seam allowances. WOF designates the width of fabric from selvedge to selvedge (approximately 42" wide).

Fabric A For the center panel cut (2) strips 3½" x 28¼"
(2) squares 16" x 16", each cut diagonally to make (4) half-square triangles square 4¼" x 4¼"
1 square 4½" x 4½"

Fabric B For border 6, cut from the length of the fabric, centering the strip on the floral stripe:
(2) side borders 7½" x 82½"
(2) top/bottom borders 7½" x 73½"

Fabric C For the center medallion: (2) squares 5½" x 5½"
(4) squares 4⅞" x 4⅞"
For the star border blocks: (208) squares 2½" x 2½"

Fabric D For the center medallion: (1) square 5½" x 5½"
(2) squares 5¼" x 5¼", each cut diagonally twice to make (8) quarter-square triangles
For the star border blocks: (104) squares 2½" x 2½"

Fabric E From the length of the fabric and matching the print for each strip, cut:
(2) side border strips 4" x 48½"
(2) top/bottom border strips 4" x 40½"

Fabric F For the center medallion: (4) squares 4¼" x 4¼"
(1) square 5½" x 5½"
(2) squares 4⅞" x 4⅞", each cut in half diagonally to make (4) half-square triangles
For star border blocks: (26) squares 4½" x 4½"

Fabric G For the center medallion:
(4) squares 4½" x 4½"
(4) squares 4⅞" x 4⅞"
(1) square 5¼" x 5¼", cut diagonally twice to make (4) quarter-square triangles
For the star border blocks:
(104) rectangles 2½" x 4½"
(104) squares 2½" x 2½"

Fabric H For border 1: Cut 4 strips 1⅞" x WOF and cut into the following:
(2) 41½" side strips and (2) 33½" top/bottom strips
Cut 13 strips 1½" x WOF and cut into the following, piecing if necessary:
For the center panel: (2) strips 28¾" long
For border 3: (2) 50½" side strips and (2) 42½" top/bottom strips
For border 5: (2) 70½" side strips and (2) 62½" top/bottom strips
For binding, cut (9) strips 2½" x WOF

Backing Cut (2) panels WOF x 84", pieced to fit quilt top with 4" overlap

Lady Lancaster Quilt

Making and Assembling the Quilt

Note: Begin by making sure you're sewing with accurate $\frac{1}{4}$ " seams. Use your sewing machine's $\frac{1}{4}$ " foot or mark the throat plate of your machine $\frac{1}{4}$ " away from the needle with masking tape. Check the measurements of the pieced units as you make them. If an element is too small, try again with a slightly narrower seam allowance. If an element is too large, you can trim it.

- 1. Make the center star block.** Referring to diagram 1, draw a diagonal line from corner to corner on the wrong side of a $5\frac{1}{2}$ " x $5\frac{1}{2}$ " Fabric D square. Place the marked square on a $5\frac{1}{2}$ " x $5\frac{1}{2}$ " Fabric C square, right sides together. Stitch $\frac{1}{4}$ " away from the drawn line on both sides. Cut the square on the drawn line to yield 2 C/D units. Press the seam allowances toward the C.
2. Repeat, this time using the $5\frac{1}{2}$ " x $5\frac{1}{2}$ " Fabric F square and the remaining Fabric C square to make 2 C/F units. Press the seam allowances toward the C.
3. Place a C/D unit and a C/F unit, right sides together, matching seams, with the C patches opposite the F and D patches. Draw a diagonal line from corner to corner, crossing the previous seams. Stitch $\frac{1}{4}$ " away from the line on both sides. Cut on the drawn line to yield 2 quarter-square triangle units. Repeat with the remaining C/D and C/F units to make a total of 4 quarter-square triangle units. Trim these units so they measure $4\frac{1}{4}$ " x $4\frac{1}{4}$ " from edge to edge.
4. Referring to central medallion piecing diagram, arrange the units you just made with (4) Fabric F $4\frac{1}{4}$ " x $4\frac{1}{4}$ " squares and the Fabric A $4\frac{1}{4}$ " x $4\frac{1}{4}$ " square to form the center star block. Join the units.
5. Referring to diagram 2, layer the $4\frac{7}{8}$ " x $4\frac{7}{8}$ " Fabric G square right sides together with the same size Fabric C square. Draw a diagonal line from corner to corner on the back of the G square. Sew $\frac{1}{4}$ " away from the drawn line on both sides. Cut on the line to make 2 half-square triangle units. Press the units open. Repeat with the remaining like squares to make 8 half-square triangle units.
6. Referring to the central medallion piecing diagram, arrange the half-square triangle units with the remaining D quarter-square triangles, Fabric F triangles, Fabric G quarter-square triangles and $4\frac{1}{2}$ " x $4\frac{1}{2}$ " squares into the corner units. Join the elements into units. Join the units into the center medallion.
7. Referring to the quilt assembly, add the Fabric A half-square triangles to the sides of the center medallion. Trim the resulting square to measure $28\frac{3}{4}$ " x $28\frac{3}{4}$ " from raw edge to raw edge.
8. Matching centers and ends, sew the $28\frac{3}{4}$ " fabric H strips to the top and bottom of the center panel. In the same manner, add the remaining Fabric A strips to the top and bottom of the center panel.

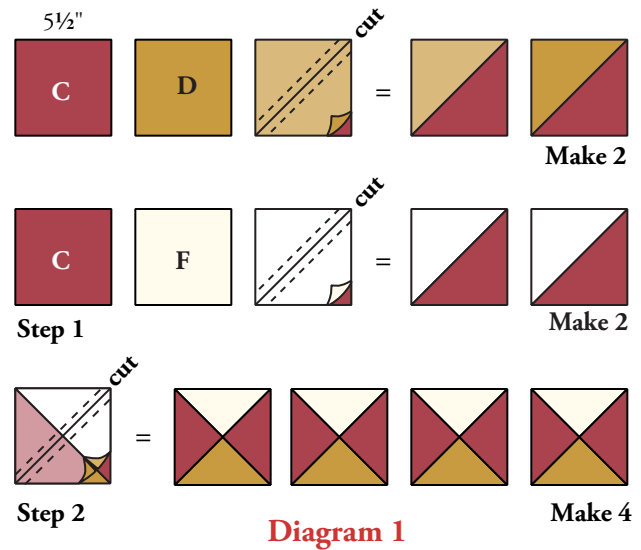


Diagram 1

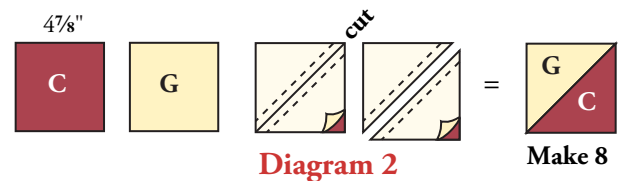
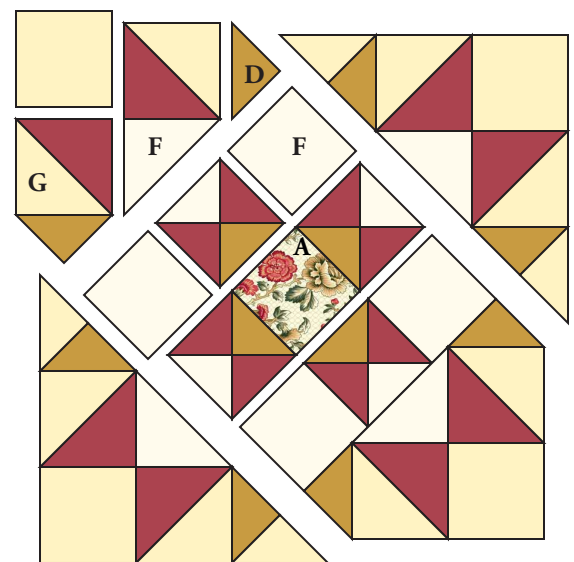


Diagram 2



Central Medallion Piecing

Lady Lancaster Quilt

9. Matching centers, join a Fabric H border 1 side strip, a Fabric E border 2 side strip, and a Fabric H border 3 side strip. Repeat to make another side border. Likewise, join the corresponding strips to make top and bottom borders.
10. Lay the top border across the middle of the panel, from side to side, and mark the exact border length by placing pins in the border where the ends cross the raw edges of the panel.
11. Matching centers and marked ends/raw edges, carefully pin the border to the quilt. Join the border to the quilt, stopping and starting the stitching $\frac{1}{4}$ " away from the raw edges of the quilt. Repeat for the bottom border.
12. In the same manner, mark the side borders by measuring the panel through the center from top to bottom. Add the side borders. Matching the border seams, miter the corners and trim the excess fabric, leaving $\frac{1}{4}$ " seam allowance. Press the borders away from the quilt and press the seam allowances open. The quilt should measure $40\frac{1}{2}$ " x $48\frac{1}{2}$ " from raw edge to raw edge. Trim or re-stitch if necessary.

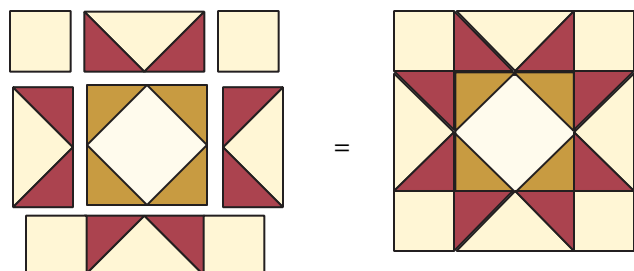
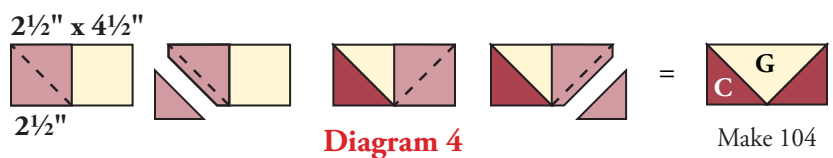
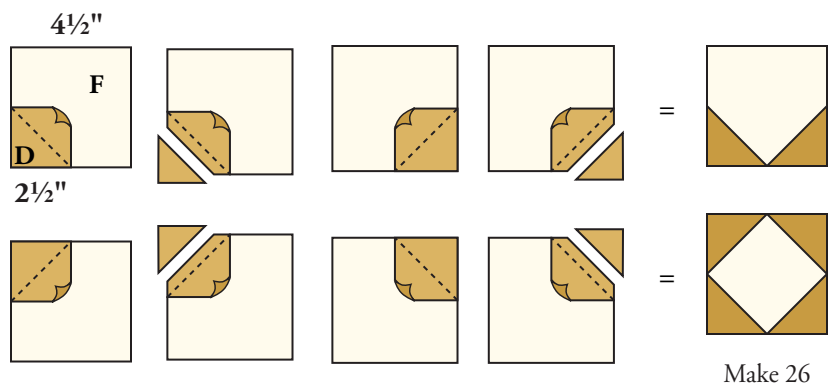
13. **Make the star border blocks.** Referring to diagram 3, align two Fabric D $2\frac{1}{2}$ " x $2\frac{1}{2}$ " squares right sides together with opposite corners of a $4\frac{1}{2}$ " x $4\frac{1}{2}$ " Fabric F square. Mark lines on the D squares, from corner to corner, as shown. Stitch on the marked lines and trim excess fabric, leaving $\frac{1}{4}$ " seam allowance. Press the triangles open. *This unit should measure $4\frac{1}{2}$ " x $4\frac{1}{2}$ " from raw edge to raw edge.* Repeat for the remaining corners. Make 26 square-in-a-square units like this.

14. **Make flying geese for the star points.** Referring to Diagram 4, align a Fabric C $2\frac{1}{2}$ " x $2\frac{1}{2}$ " square right sides together with the end of a $2\frac{1}{2}$ " x $4\frac{1}{2}$ " Fabric G rectangle. Draw a line on the square from corner to corner as shown. Stitch on the drawn line and trim excess fabric, leaving $\frac{1}{4}$ " seam allowance. Press the triangle open. Repeat for the other end of the rectangle. The unit should measure $2\frac{1}{2}$ " x $4\frac{1}{2}$ ". Make 104 flying geese blocks like this.

15. Referring to the star block piecing diagram, join a square-in-a-square unit, (4) flying geese, and (4) Fabric G $2\frac{1}{2}$ " x $2\frac{1}{2}$ " squares to make a block. The block should measure $8\frac{1}{2}$ " x $8\frac{1}{2}$ " from raw edge to raw edge. Make 26 star blocks.
16. Join (6) star blocks to make a side border strip. Repeat. Matching centers and ends, join the borders to the sides of the quilt. Likewise, join (7) star blocks to make a top border. Repeat to make the bottom border. In the same manner, join these borders to the top and bottom of the quilt.
17. Matching centers, join a Fabric H border 5 side strip and a Fabric B border 6 side strip. Repeat to make another side border. Likewise, join the corresponding strips to make top and bottom borders. Matching centers and ends, carefully pin the borders to the quilt. Join the borders to the quilt, stopping and starting the stitching $\frac{1}{4}$ " away from the raw edges of the quilt. Matching the seams and the stripes, miter the corners and trim the excess fabric, leaving $\frac{1}{4}$ " seam allowance. Press the borders away from the quilt and press the seam allowances open.

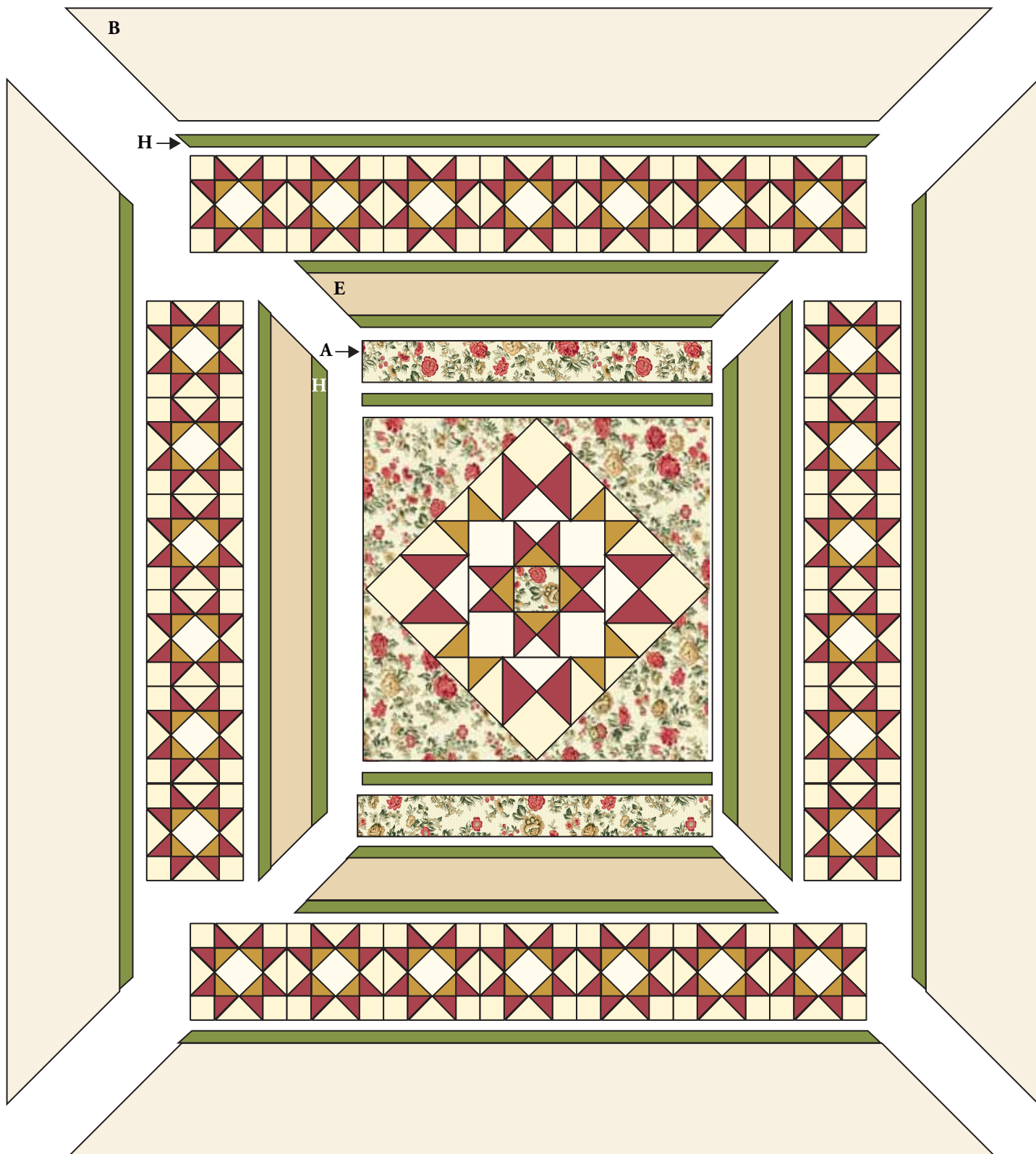
Finishing the Quilt

18. Layer quilt with batting and backing. Quilt in the ditch around borders and block patches. Quilt around the printed motifs in the center panel and in border 6. Bind to finish the quilt.



Star Block Piecing Diagram

Lady Lancaster Quilt



Quilt Diagram

1384 Broadway
New York, NY 10018
(800) 223-5678
www.andoverfabrics.com

Lady Lancaster

by Gail Kessler



5293-L



5295-L



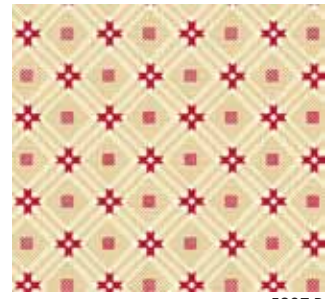
5294-L



5296-E



5296-Y



5297-R



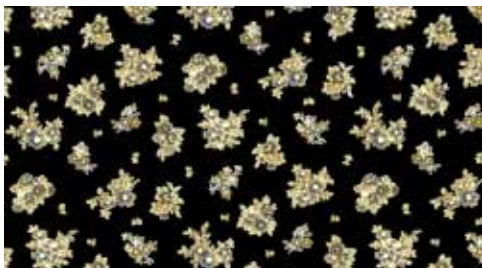
5299-L



1867-G4



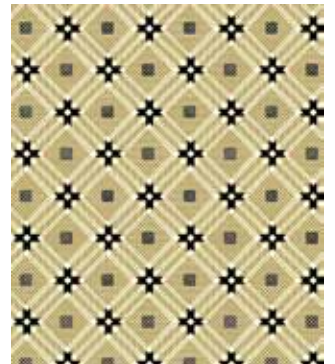
5293-K



5295-K



5294-K



5297-K



5296-C



5299-K



1867-K2

All Fabrics used in quilt pattern. Fabrics shown are 25% of actual size.

9/6/10

Free Pattern Download Available at www.andoverfabrics.com