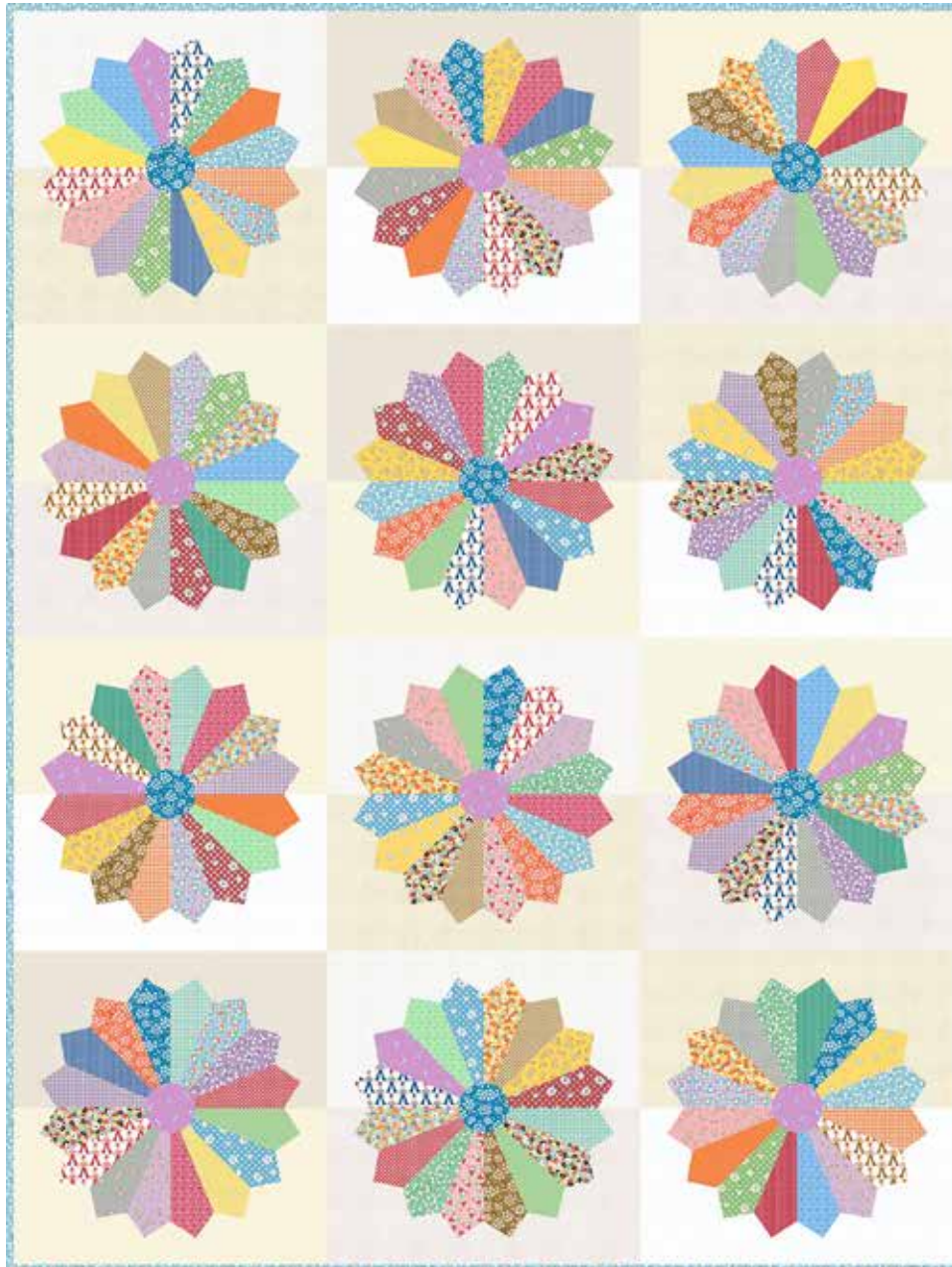


Lottie Ruth

BY KATHY HALL



Quilt designed by:
Daryl Cohen

Quilt Size: **66" x 88"**
andoverfabrics.com

About Lottie Ruth

Inspired by a stash of 1930s antique quilt blocks, this line harkens back to a time when money was scarce for some and pretty feed sack florals became the fabric of choice for home sewers. Lottie Ruth has it all – colorful florals and graphic motifs that mix perfectly. — *Kathy Hall*

andover



makower.uk
Concord Fabrics UK Ltd

Free Pattern Download Available

1384 Broadway New York, NY 10018
Tel. (800) 223-5678 • andoverfabrics.com

Lottie Ruth Quilt



Introducing Andover Fabrics new collection: **LOTTIE RUTH** by Kathy Hall

Quilt designed by Daryl Cohen

Quilt finishes 66" x 88"

12 Blocks: 22" x 22"

Popular in the Depression Era, this block, variously known as Aster, Dresden Plate, and Sunflower, is the perfect pattern for this nostalgic fabric collection. Make it all by hand or machine to suit yourself. Only 12 oversize blocks are needed to make a twin-size quilt.

Cutting Directions

Note: Read assembly directions before cutting patches. All measurements are cut sizes and include 1/4" seam allowances. A fat 1/8 is a 9" x 20"-22" cut of fabric. A fat 1/4 is an 18" x 20"-22" cut. WOF designates the width of fabric from selvedge to selvedge (approximately 42" wide).

Fabric A

Cut (6) circles (pattern given)

Cut (5) petals (pattern given)

Fabric B

Cut (6) circles

Cut (5) petals

Fabric C

Cut (8) strips 2 1/2" x WOF for binding

Cut (5) petals

37 Prints

From each: Cut (4-5) petals (177 total)

4 Cream Prts.

From each: Cut (3) rectangles 12 1/4" x 24"

3 Cream Prts.

From each: Cut (4) rectangles 12 1/4" x 24"

Backing

Cut (2) panels 37" x 96", pieced to fit quilt top with overlap on all sides

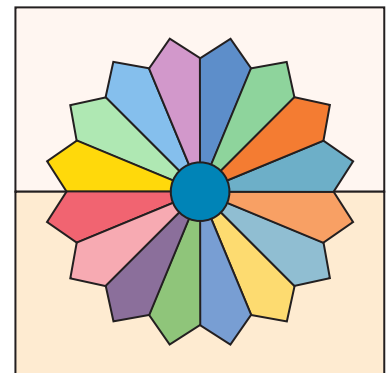
Fabric Requirements

		Yardage	Fabric		
Fabric A	blocks	fat 1/4 yard	8778-B		
Fabric B	block centers	fat 1/4 yard	8780-P		
Fabric C	blocks, binding	1 yard	8783-B		
37 Prints	blocks	fat 1/8 yard each			
	8776-B	8776-N	8776-R	8777-B	8777-G
	8777-R	8778-N	8778-O	8779-B	8779-E
	8779-P	8780-C	8780-Y	*8781-B	8781-C
	8781-O	8782-E	8782-P	8782-Y	8783-G
	8783-P	8784-O	8784-P	8784-T	8786-B
	8786-E	8786-G	8787-B	8787-R	8787-G
	8788-G	8788-O	8788-Y	8785-C	8785-N
	8785-R	8785-Y			
4 Cream Prints	blocks	3/4 yard each			
	1867-WW	1473-Q1	1525-Q	1525-Q1	
3 Cream Prints	blocks	1 1/2 yards each			
	1867-L2	1867-L7	1473-Q		
*Backing		5 1/2 yards			8781-B

Making the Quilt

1. Mark dots on the wrong side of each petal. Select 16 different petals for each of 12 blocks. Join petals for 1 block along their long edges to make a ring, stopping the stitching at the dots. Press under the seam allowance at the tip of each petal. Repeat to make 12 rings. Turn under the seam allowance on each of the 12 Fabric A and B circles.

2. Sew 2 different cream rectangles together to make a background square. Center a pieced ring on the background square, aligning the seams of the ring with the seam of the background rectangles. Baste or pin in place.



Block – Make 12

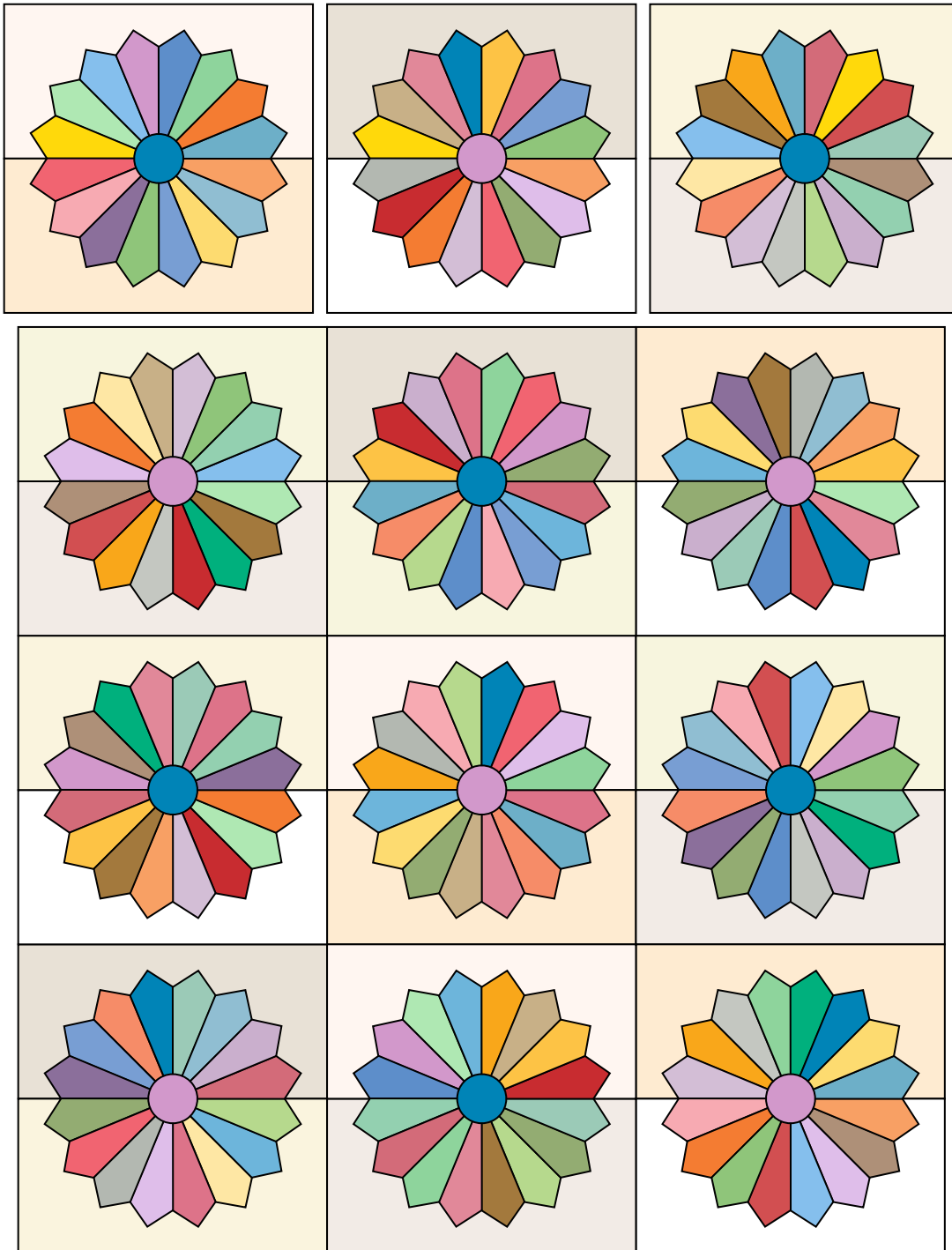
- Use a straight machine stitch or a hand blind stitch to appliqué the ring in place. Position a prepared circle on the center of the ring, covering raw edges of the petals. Stitch in place. Press the block from the back. Trim the background to 22 1/2" x 22 1/2". Make 12 blocks like this.

Lottie Ruth Quilt

- Referring to the Quilt Diagram, join blocks in 4 rows of 3 blocks each, alternating the Fabric A and B center circles as shown. Join the rows.

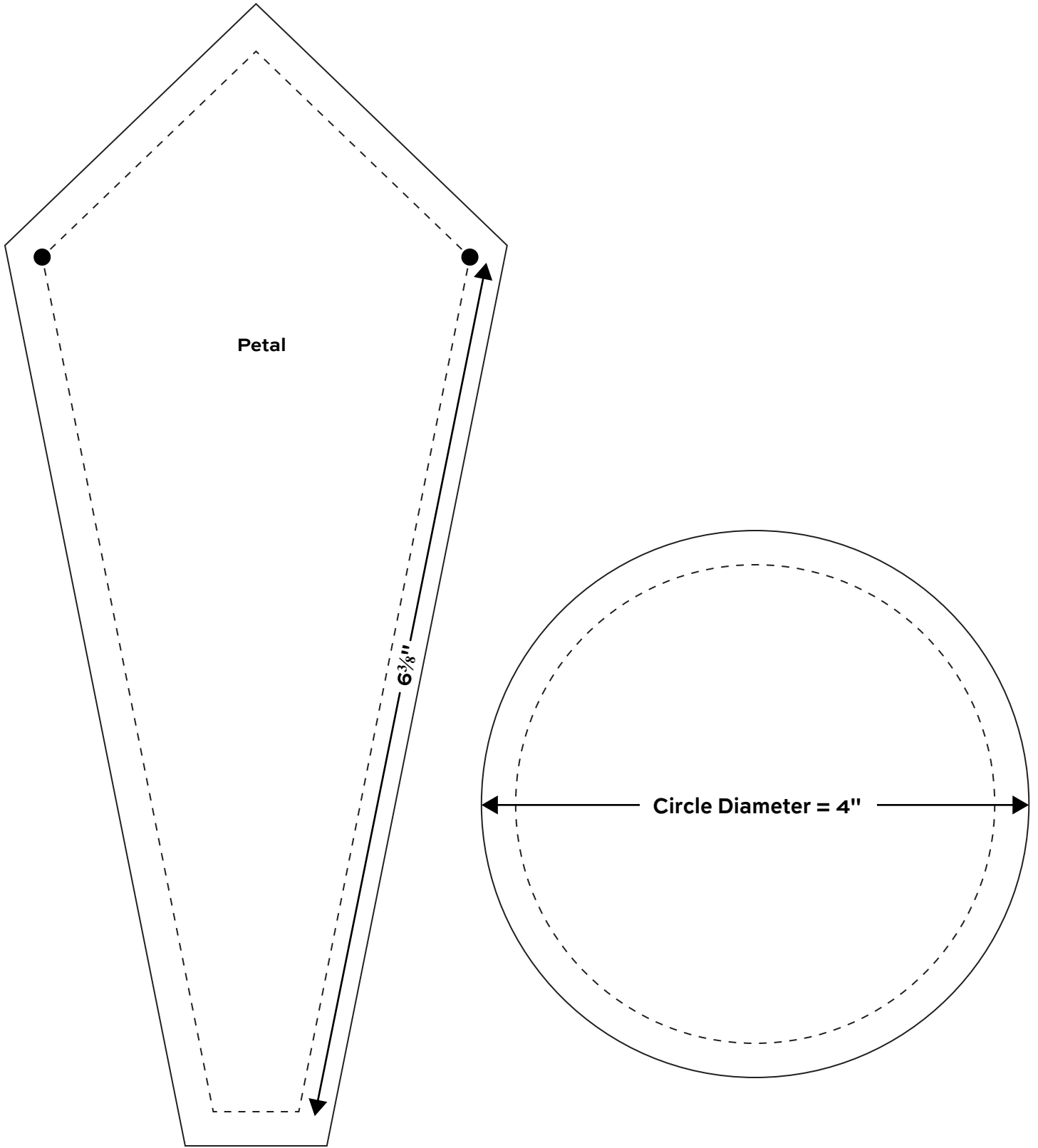
Finishing the Quilt

- Layer the quilt with batting and backing and baste. Quilt around the appliqué. Use a stipple or filler motif to quilt the background. Quilt around the printed motifs in the blocks as you wish. Bind to finish the quilt.



Quilt Diagram

Lottie Ruth Quilt



Lottie Ruth

BY KATHY HALL



8776-B



8776-N



8776-R



8777-B



8777-G



8777-R



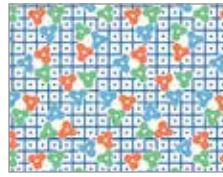
8778-B



8778-N



8778-O



8779-B



8779-E



8779-P



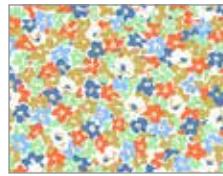
8780-C



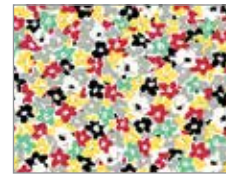
8780-P



8780-Y



8781-B



8781-C



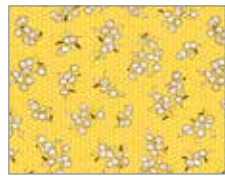
8781-O



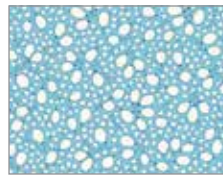
8782-E



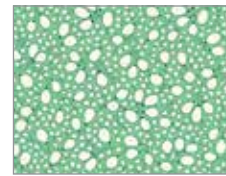
8782-P



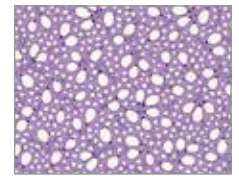
8782-Y



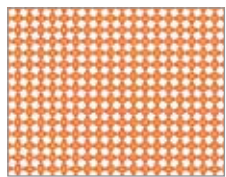
8783-B



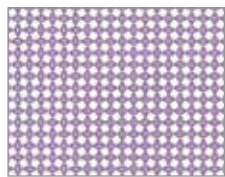
8783-G



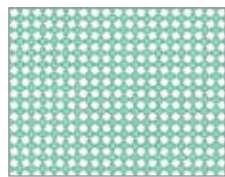
8783-P



8784-O



8784-P



8784-T



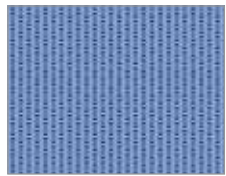
8786-B



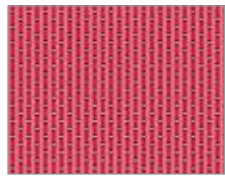
8786-E



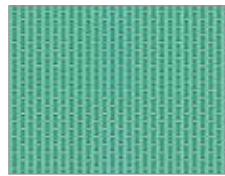
8786-G



8787-B



8787-R



8787-G



8788-G



8788-O



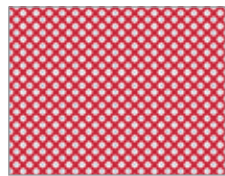
8788-Y



8785-C



8785-N



8785-R



8785-Y

All fabrics are used in quilt pattern.

Fabrics shown are 25% of actual size.



1867-L2
Dimples



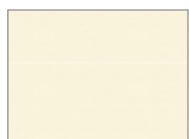
1867-L7
Dimples



1867-WW
Dimples



1473-Q
Linen Texture



1473-Q1
Linen Texture



1525-Q
Linea



1525-Q1
Linea

andover

• makower.uk
• Concord Fabrics UK Ltd

Free Pattern Download Available

1384 Broadway New York, NY 10018
Tel. (800) 223-5678 • andoverfabrics.com