

Meadow Walk

ALEXANDRA BORDALLO



Meadow Walk Quilt designed by: **Alexandra Bordallo**

Quilt Size: **64" x 80"** • Skill Level: **Beginner**

Meadow Walk Quilt

Introducing Andover Fabrics new collection: **MEADOW WALK** by Alexandra Bordallo

Quilt designed by Alexandra Bordallo

Quilt finishes 64" x 80"

80 Blocks: 8" x 8"

If you want a speedy quilt that also pays homage to Mother Nature, this is the one for you. Floral prints, butterflies, garden trellises, and Ohio Star prints are all part of the look. Easy strip-piecing methods will make this a sure-fire winner.

Cutting Directions

Note: Read assembly directions before cutting patches. All measurements are cut sizes and include 1/4" seam allowances. WOF designates the width of fabric from selvedge to selvedge (approximately 42" wide).

Fabric Requirements	Yardage	Fabric
2 1/2" Strip Roll	blocks	
Fabric R	blocks	1 yard 1342-T
Binding	5/8 yard	1343-P
Backing	5 yards	1337-T

Fabric R

Cut (40) squares 5 1/2"

2 1/2" Strip Roll

From each of the 2 1/2" x WOF strips:

Cut (4) rectangles 2 1/2" x 8 1/2"

Binding

Cut (8) strips 2 1/2" x WOF for binding

Backing

Cut (2) lengths 38" x 90", pieced to fit quilt top with overlap on all sides

Making the Quilt

When making the blocks, refer to these labels and the list of fabrics on the last page of the pattern.

A 1337-L	B 1337-P	C 1337-T	D 1338-E
E 1338-P	F 1338-T	G 1339-E	H 1339-T
I 1339-V	J 1340-E	K 1340-L	L 1340-T
M 1341-G	N 1341-P	O 1341-R	P 1341-Y
Q 1342-E	R 1342-T	S 1342-Y	T 1343-P
U 1343-T	V 1343-Y		

1. Refer to the block diagrams for fabric order. Join 4 strips to make each strip-pieced band. Press the seam allowances toward the darker strip in each band. Measure across the band. It should be 8 1/2" wide. If it is not, alter your piecing and pressing techniques. Note that some fabrics will make 4 bands and some fabrics will make 2 bands, depending on whether there are 1 or 2 strips of that fabric in the jelly roll.
2. Trim one end of a pieced band. Starting at the trimmed end, cut 4 patches that are each 8 1/2" wide (Diagram 1). This "block" should be an 8 1/2" square. Cut each band into 4 squares. Set aside.

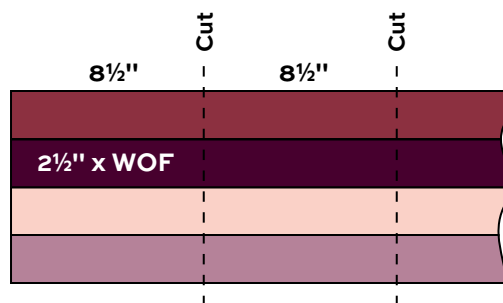


Diagram 1 - Strip-Pieced Band

3. Forty of the blocks have a Fabric R corner as shown in the block diagrams. Draw a diagonal line on the wrong side of each Fabric R 5 1/2" square. Position a marked square as shown on one corner of an appropriate pieced block (Diagram 2). Stitch on the marked diagonal line. Cut away the excess fabric. Press the corner up. Repeat this step to make 40 blocks with pieced corners.

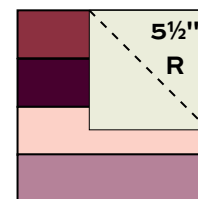
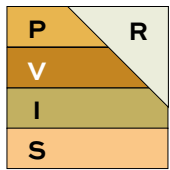
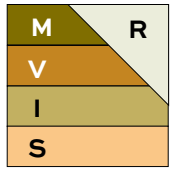


Diagram 2

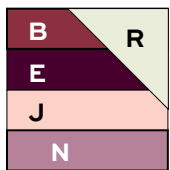
Meadow Walk Quilt



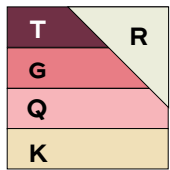
Make 8



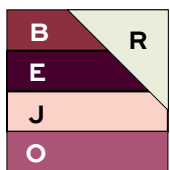
Make 8



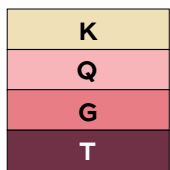
Make 8



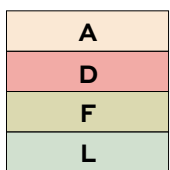
Make 8



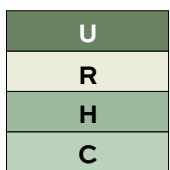
Make 8



Make 8



Make 16

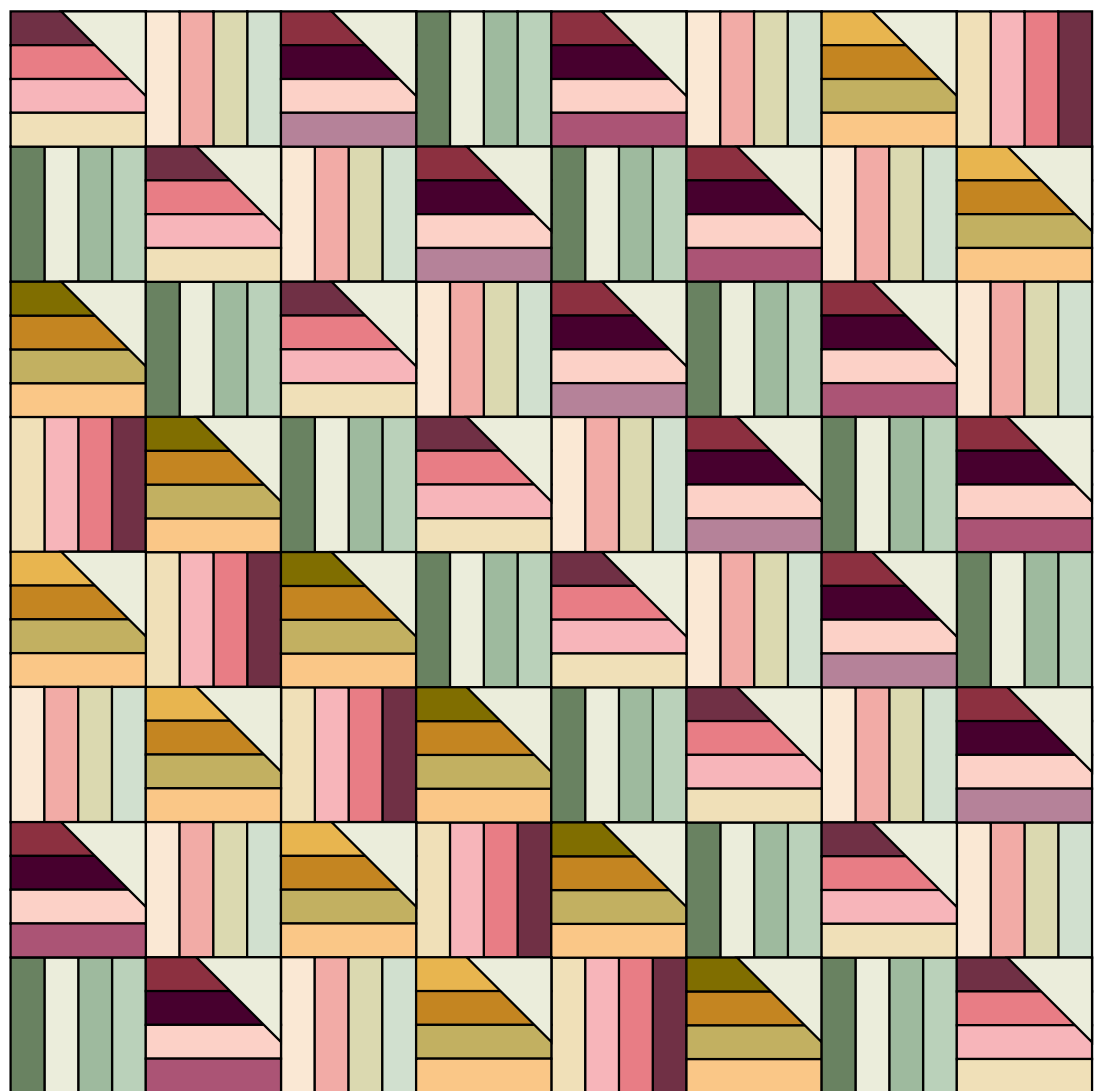
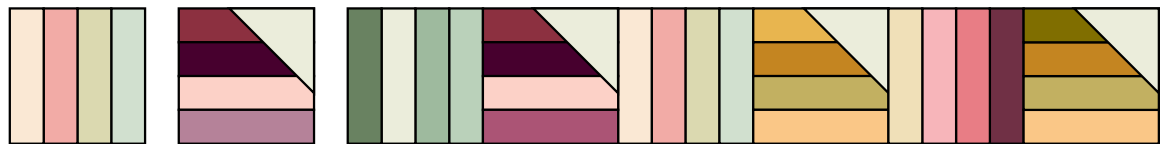
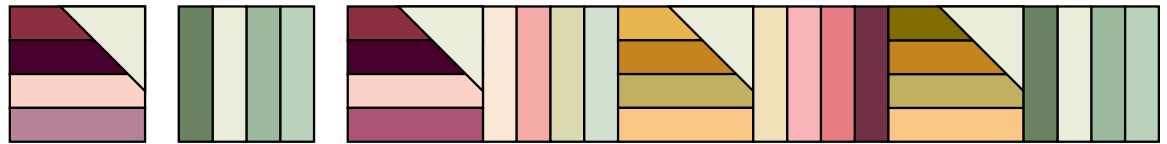


Make 16

4. Referring to the Quilt Assembly, arrange the blocks in 10 rows of 8 blocks each, paying careful attention to the order and orientation of the blocks. Looking through a camera or the wrong end of binoculars may help you spot something out of order. Once you are satisfied with the arrangement, join the blocks into rows. Press seam allowances between blocks in opposite directions in alternating rows. Finally, join the rows.

Finishing the Quilt

5. Layer the quilt with batting and backing and baste. Quilt in the ditch around patches. Or, quilt an overall pattern. Bind to finish the quilt.



Quilt Assembly

Meadow Walk

ALEXANDRA BORDALLO



1337-L



1337-P



1337-T



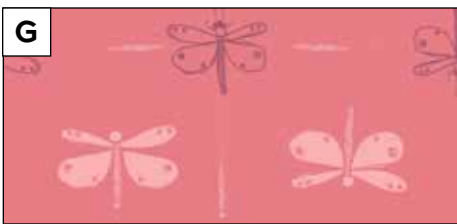
1338-E



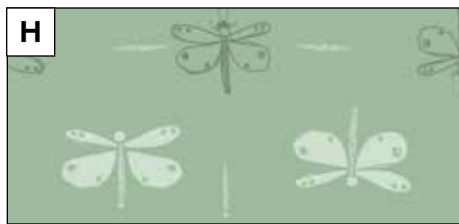
1338-P



1338-T



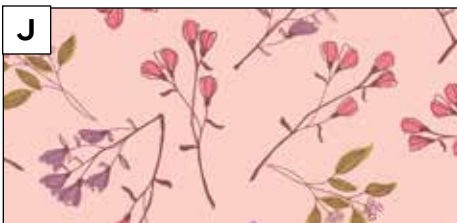
1339-E



1339-T



1339-V



1340-E



1340-L



1340-T



1341-G



1341-P



1341-R



1341-Y



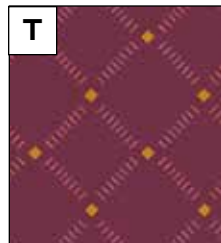
1342-E



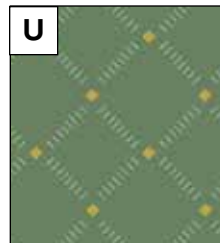
1342-T



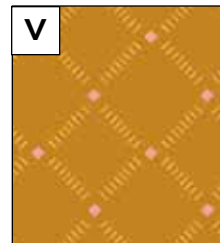
1342-Y



1343-P



1343-T



1343-Y

All fabrics are used in quilt pattern. Fabrics shown are 50% of actual size.