

OP ART II



Quilt designed by Janet Houts

Finished size: 76" x 96"

Fabrics by **Gail Kessler**

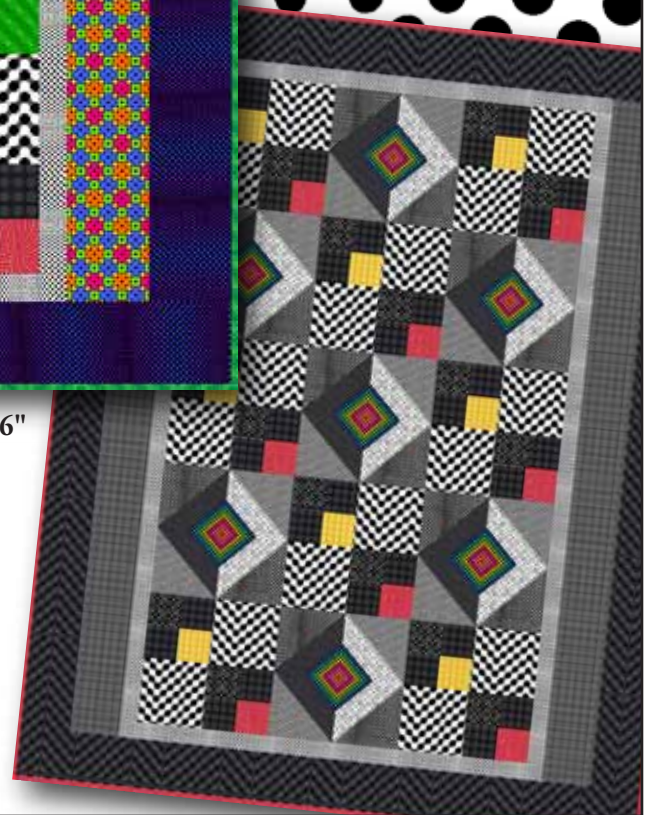


makower uk

1384 Broadway
New York, NY 10018
(800) 223-5678

www.andoverfabrics.com

Revised 6/15/11



Op Art II Quilt

Using Op Art II fabrics by Gail Kessler with additional fabrics from Op Art I by Kathy Hall for Andover Fabrics
Quilt designed by Janet Houts

Quilt finishes 76" x 96"

8 double four patch blocks: 16" x 16"
7 square-in-a-square blocks: 16" x 16"

Oh, wow! These exciting prints pack such a visual punch in this easy-to-piece but stunning quilt. Follow the cutting instructions for the borders to make the most of the special optical effects.

Fabric Requirements

		Yardage	Bright	Black/White
Fabric A	double four-patch blocks	1 yard	5302-AK	5302-AK
Fabric B	square-in-a-square blocks	1 yard	-----	5307-KA
	includes binding, bright quilt*	1¾ yards*	5302-G*	-----
Fabric C	double four-patch blocks	5/8 yard	5303-C	5303-C
Fabric D	double four-patch blocks	5/8 yard	5301-K	5301-K
Fabric E	square-in-a-square blocks	1 yard	5306-AK	5306-AK
Fabric F	square-in-a-square blocks	1 yard	5302-K	5306-K
Fabric G	square-in-a-square blocks	1 yard	5301-AK	5301-AK
Fabric H	square-in-a-square blocks	1 yard	5300-M	5300-M
Fabric I	double four-patch blocks	¼ yard	5176-Y	5176-Y
Fabric J	double four-patch blocks	¼ yard	5174-R	-----
	incl. binding, black/white quilt**	1 yard	-----	5174-R**
Fabric K	inner borders	5/8 yard	5307-AK	5307-AK
Fabric L	side borders	1 yard	5301-M	5303-AK
Fabric M	outer borders	1½ yards	5307-BP	5302-K
Backing	2 panels 100" x WOF per quilt	5¾ yards	5301-M	5301-AK

*includes binding, bright version; **includes binding, black/white

Cutting Directions

Note: Measurements for borders are the exact length required plus ¼" seam allowances. WOF designates the width of fabric from selvedge to selvedge (approximately 42" wide).

Fabric A For the double four-patch blocks, cut (16) 8½" x 8½" squares

Fabric B For the square-in-a-square blocks, cut (14) 8½" x 8½" squares
For the "bright" quilt, cut (10) strips binding 2½" x WOF

Fabric C For the double four-patch blocks, cut (32) 4½" x 4½" squares

Fabric D For the double four-patch blocks, cut (16) 4½" x 4½" squares

Fabric E For the square-in-a-square blocks, cut (14) 8½" x 8½" squares

Fabric F For the square-in-a-square blocks, cut (7) 8½" x 16½" rectangles

Fabric G For the square-in-a-square blocks, cut (7) 8½" x 16½" rectangles

Fabric H For the square-in-a-square blocks, fussy cut (7) 6¼" squares, centering the squares as shown in the quilt picture

Fabric I For the double four-patch blocks, cut (8) 4½" x 4½" squares

Fabric J For the double four-patch blocks, cut (8) 4½" x 4½" squares
For the "black/white" quilt, cut (10) strips binding 2½" x WOF

Fabric K Cut 7 strips 2½" x WOF. Piece these strips to make (2) side borders 80½" long and (2) top/bottom borders 52½" long

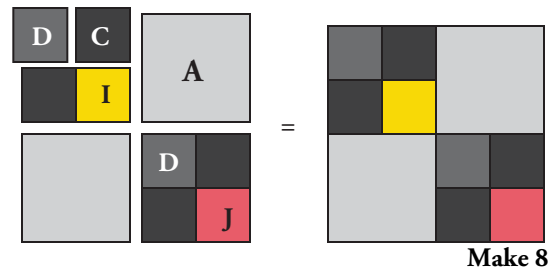
Fabric L Cut 5 strips 6½" x WOF. Piece these strips to make (2) side borders each 84½" long.

Fabric M Cut 8 strips 6½" x WOF. Piece these strips to make (2) side borders 84½" long and (2) top/bottom borders each 76½" long

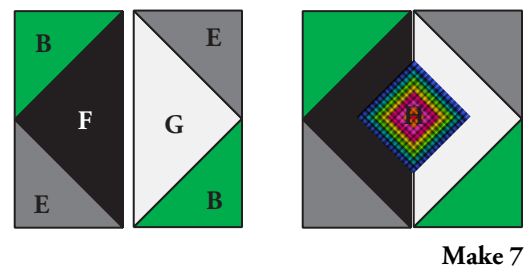
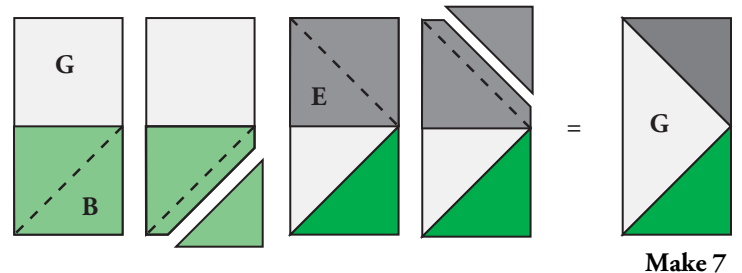
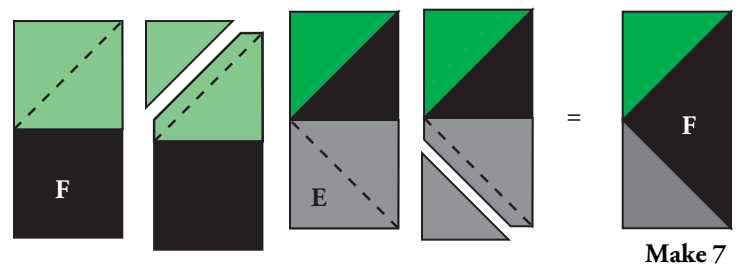
Backing Cut (2) panels 100" x WOF, pieced to fit quilt top with 4" overlap

Making and Assembling the Quilt

1. Make the double four-patch blocks. Referring to diagram 1 for block piecing, join (2) fabric C squares, a fabric D square, and a fabric I square to make a small four-patch block. Repeat with (2) fabric C squares, a fabric D square, and a fabric J square. Paying attention to the orientation of the patches, join the small four-patch blocks with (2) fabric A squares to complete the block. Make 8.
2. Make the square-in-a-square blocks. Referring to Diagram 2, align a fabric B $8\frac{1}{2}$ " x $8\frac{1}{2}$ " square right sides together with one end of a $8\frac{1}{2}$ " x $16\frac{1}{2}$ " fabric F rectangle. Draw a line on the square from corner to corner as shown. Stitch on the drawn line and trim excess fabric, leaving $\frac{1}{4}$ " seam allowance. Press the triangle open. Repeat for the other end of the rectangle with a fabric E square to make a unit. Repeat, using a B and an F square and a fabric G rectangle. Referring to the block piecing diagram, join the units. Make 7.
3. Prepare the fabric H squares for your favorite method of appliqué. The measurements include a $\frac{1}{4}$ " turn-under allowance for traditional applique. If you are using fusible appliqué, follow the manufacturer's instructions and apply fusible web to the back of the squares. Trim the squares to 6" x 6". Referring to the quilt picture, center a prepared square over the joined units. Appliqué it in place. Make 7.
4. Referring to the quilt assembly, arrange the blocks alternately to make 5 rows of 3 blocks each. Join the blocks into rows. Join the rows.
5. Matching centers and ends, join the longer fabric K strips to the sides of the quilt. Similarly, join the shorter fabric K strips to the top and bottom of the quilt.
6. Add the fabric L borders to the sides of the quilt.
7. Matching centers and ends, join the longer fabric M strips to the sides of the quilt. Similarly, join the shorter fabric M strips to the top and bottom of the quilt.



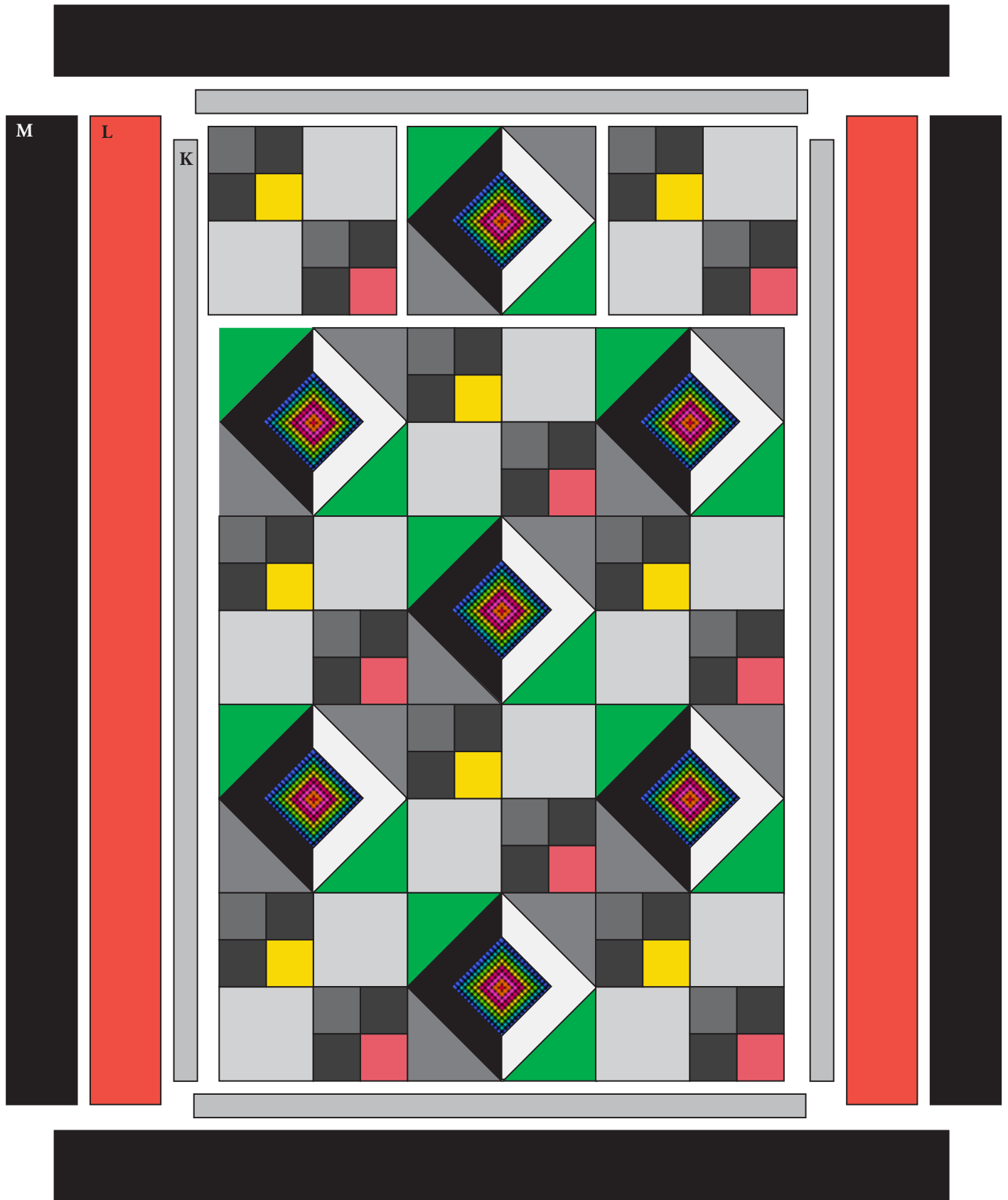
**Double four patch piecing
Diagram 1**



**Square-in-a-square piecing
Diagram 2**

Finishing the Quilt

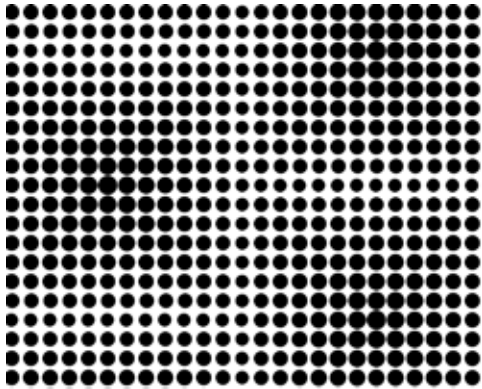
8. Layer quilt with batting and backing. Quilt in the ditch around borders and block patches. Quilt around the printed motifs in the blocks and borders or as desired. Bind to finish the quilt.



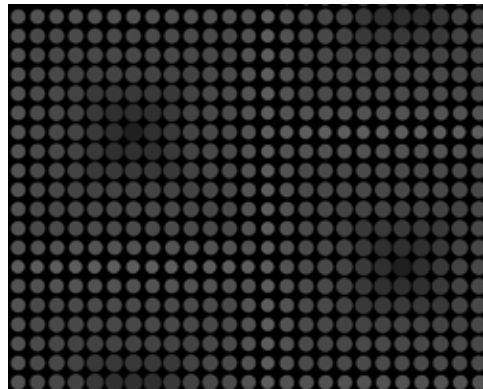
Quilt Diagram

OP ART II

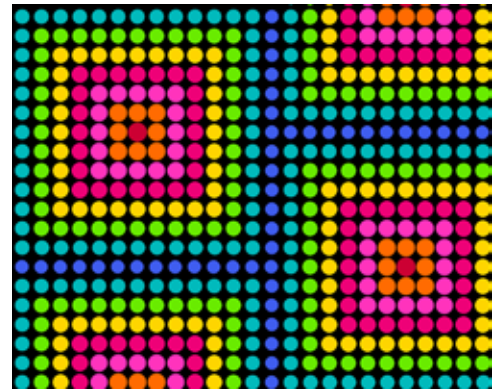
by Gail Kessler



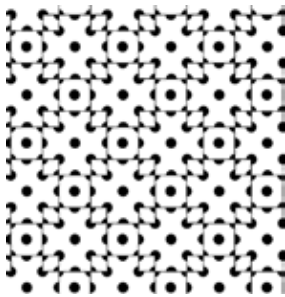
5300-AK



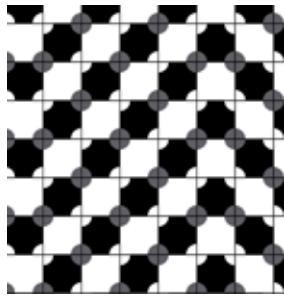
5300-K



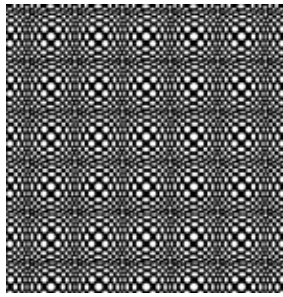
5300-M*



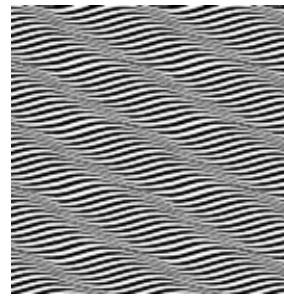
5301-AK*



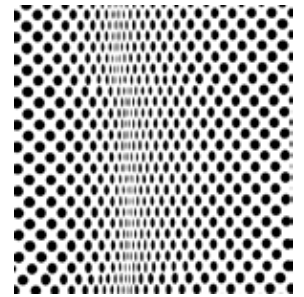
5302-AK*



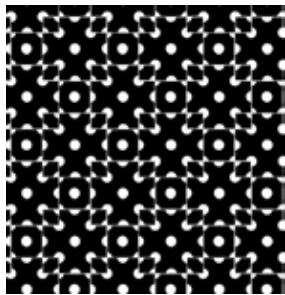
5303-AK



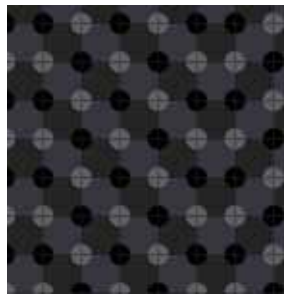
5306-AK



5307-AK*



5301-K*



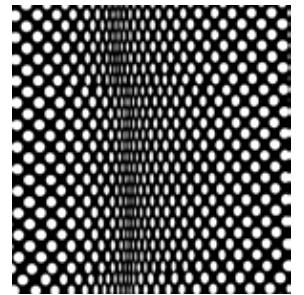
5302-K*



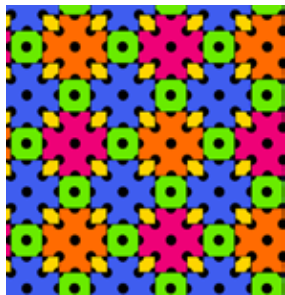
5303-K*



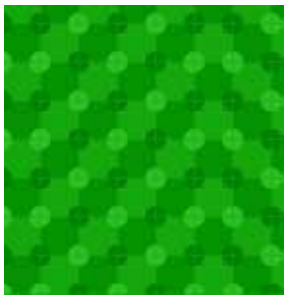
5306-K



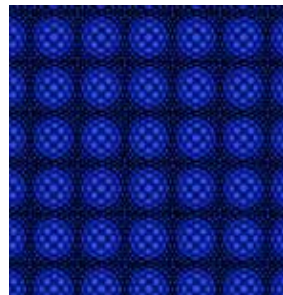
5307-KA



5301-M*



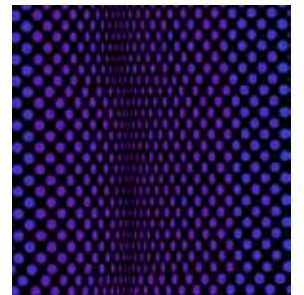
5302-G*



5303-B*

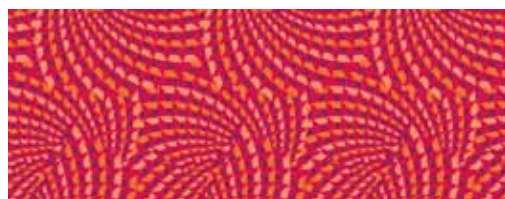


5306-E



5307-BP*

From OP ART I by Kathy Hall



5174-R*



5176-Y*

*Indicates fabric used in quilt pattern. Fabrics shown are 25% of actual size.

Revised 6/15/11

Free Pattern Download Available at www.andoverfabrics.com