


Pumpkin Patch Plaids

RENÉE NANNEMAN


100
years



Pumpkin Patch Maze Quilt designed by: **Renée Nanneman**

Quilt Size: **58" x 72"** • Skill Level: **Advanced Beginner** • andoverfabrics.com

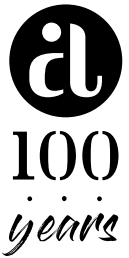
andover • [makower uk](http://makower.uk)

Free Pattern Download Available

1384 Broadway New York, NY 10018
Tel. (800) 223-5678 • andoverfabrics.com

Pumpkin Patch Maze

Introducing Andover Fabrics new collection: **PUMPKIN PATCH PLAIDS** by Renée Nanneman
 Quilt designed by Renée Nanneman



Quilt finishes 58" x 72"
 20 Blocks: 12" x 12"

Glowing autumn colors are surrounded by black prints. This is the perfect size for snuggling under on a cool October evening, and easy enough for beginning quilters. The fun part is choosing the placement of the plaids.

Fabric Requirements

		Yardage	Fabric
Fabric A	bias binding	7/8 yard	WV-5354 K
Fabric B	sashes	1 1/2 yards	9311-K
Fabric C	blocks	1 1/8 yards	9304-K2
12 Plaid	blocks	fat 1/4 yard each	
WV-5350 N	WV-5350 O	WV-5351 G	WV-5351 O
WV-5351 R	WV-5352 O	WV-5353 R	WV-5353 K
WV-5354 K	WV-5354 O	WV-5355 N	WV-5355 NK
8 Black	blocks	fat 1/4 yard each	
9300-K1	9303-K1	9306-K2	9307-K2
9308-K	9309-K	9310-K	9312-K1
Backing		3 3/4 yards	WV-5353 K

Cutting Directions

Note: Read assembly directions before cutting patches. All measurements are cut sizes and include 1/4" seam allowances. A fat 1/4 is an 18" x 20"-22" cut. WOF designates the width of fabric from selvedge to selvedge (approximately 42" wide).

Fabric A

Cut bias strips 2 1/2" wide and sew together end-to-end to total a length of 276"

Fabric B

Cut (49) sashes 2 1/2" x 12 1/2"

Fabric C

Cut (160) 3" (2 7/8") squares (read Step 1 before cutting)

12 Plaid

From each:

Cut (30) squares 2 1/2" (some are for setting squares)

8 Black

From each:

Cut (20) 3" (2 7/8") squares (read Step 1 before cutting)

Cut (10) squares 2 1/2"

Backing

Cut (2) panels 42" x 68", pieced to fit quilt top with overlap on all sides

Making the Quilt

- The blocks are made with black half-square triangles (HST) that finish 2" square. Use your favorite method to make HST, or follow these directions. Cut squares 3" for HST that will be trimmed after stitching. If you prefer not to trim, cut squares 2 7/8". Draw a diagonal line on the wrong side of a Fabric C 3" (2 7/8") square (Diagram 1). Place a marked square on a second black square, right sides together. Sew 1/4" seam on each side of the marked line; cut apart on the marked line. Press open to make pieced HST. Trim to 2 1/2" square if needed. Make 4 HST alike for each quarter block. Make 320 total HST.

3" (2 7/8")



HST

Make 4 per unit
 Diagram 1

- For each quarter block, you need 4 HST alike and a 2 1/2" square from one of the black prints used in the HST. Referring to Diagram 2, arrange and join the HST, 1 black square, and 4 plaid squares in 3 rows as shown. Join the rows to make a quarter block. Make 80 quarter blocks.

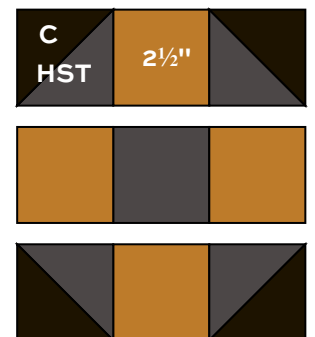


Diagram 2
 Quarter Block - Make 80

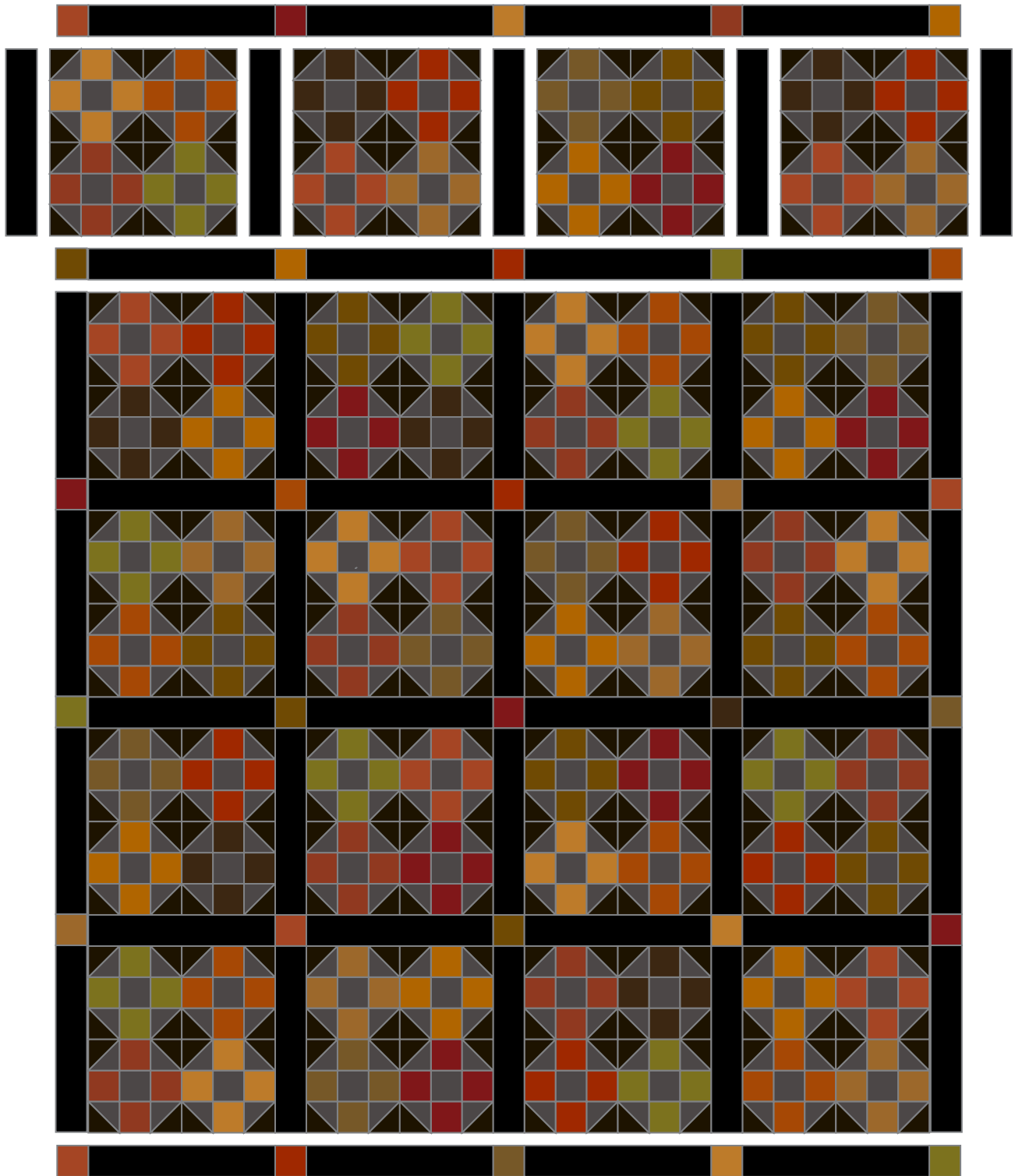
- Referring to the Quilt Diagram, arrange 4 quarter blocks to make a block. Make 20, distributing the fabrics so no block is the same as another.
- To make a block row, join 4 blocks alternately with 5 sashes. Make 5 block rows.
- To make a sash row, join 4 sashes alternately with 5 plaid 2 1/2" squares, choosing 5 different plaids. Make 6 sash rows.
- Join the block rows between the sash rows.

Pumpkin Patch Maze Quilt



Finishing the Quilt

7. Layer the quilt with batting and backing and baste. Quilt in the ditch around block patches, or quilt an overall pattern. Bind to finish the quilt.



Quilt Diagram

Pumpkin Patch Plaids

RENÉE NANNEMAN



100
years



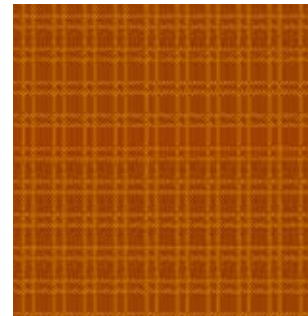
WV-5350 N



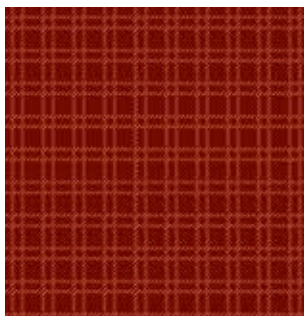
WV-5350 O



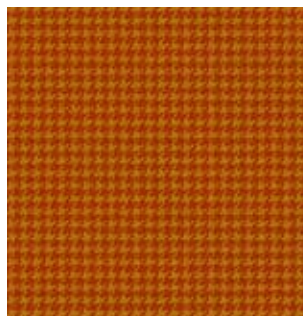
WV-5351 G



WV-5351 O



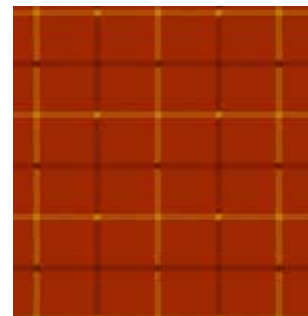
WV-5351 R



WV-5352 O



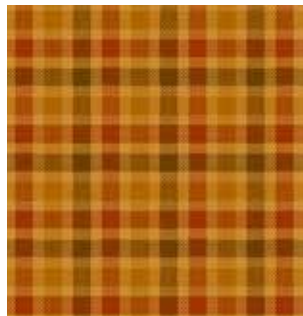
WV-5353 K



WV-5353 R



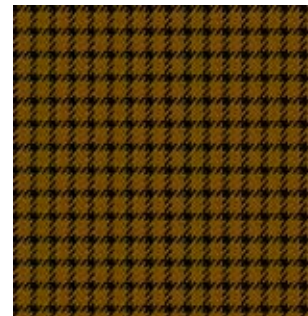
WV-5354 K



WV-5354 O



WV-5355 N

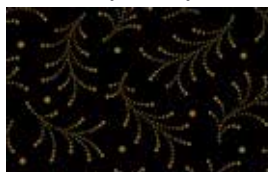


WV-5355 NK

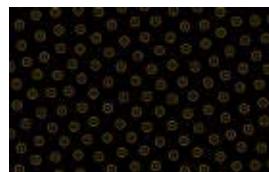
Additional fabric from **Cast Iron** by Kathy Hall



9300-K1



9303-K1



9304-K2



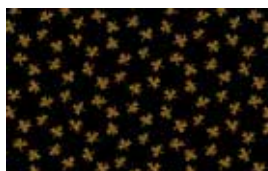
9306-K2



9307-K2



9308-K



9309-K



9310-K



9311-K



9312-K1

All fabrics are used in quilt pattern. Fabrics shown are 50% of actual size.

andover



makower.uk

Free Pattern Download Available

1384 Broadway New York, NY 10018
Tel. (800) 223-5678 • andoverfabrics.com