

# Rochester

BY DI FORD-HALL



Rochester Quilt designed  
by: Di Ford-Hall

Quilt Size: 58½" x 58½"

[andoverfabrics.com](http://andoverfabrics.com)

andover



[makower.uk](http://makower.uk)

Free Pattern Download Available

1384 Broadway New York, NY 10018  
Tel. (800) 223-5678 • [andoverfabrics.com](http://andoverfabrics.com)

# Rochester Quilt



Introducing Andover Fabrics new collection: ROCHESTER by Di Ford-Hall

Quilt designed by Di Ford-Hall

Quilt finishes 58½" x 58½"  
60 Blocks: 4" x 4"

*An exotic bird takes center stage in this medallion-style quilt made with lush floral prints reminiscent of 19th-century English fabrics. Choose from two diverse color ways, and let the unusual border prints add complexity to the quilt design.*

## Cutting Directions

**Note:** Read assembly directions before cutting patches. All measurements are cut sizes and include ¼" seam allowances. A fat ¼ is a 18" x 20"-22" cut of fabric. The mitered borders include extra length for insurance. WOF designates the width of fabric from selvedge to selvedge (approximately 42" wide).

- Fabric A** Fussy-cut (1) square 18½" x 18½", centering bird
- Fabric B** Cut (4) borders 5½" x 60", cut lengthwise  
Cut (10) squares 4½" x 4½" for blocks
- Fabric C** Fussy-cut (4) borders 2¼" x 23½", cut lengthwise
- Fabric D** Fussy-cut (4) borders 2¾" x 50", cut lengthwise  
Cut (5) squares 4½" x 4½" for blocks
- Fabric E** Fussy-cut (4) borders 2½" x 38½", cut lengthwise
- Fabric F** Cut (4) borders 1¾" x 26½", cut crosswise  
Cut (7) strips 2½" x WOF for binding  
Cut (5) squares 4½" x 4½" for blocks
- Fabric G** Cut (8) squares 4½" x 4½" for border corners  
Cut (80) squares 2½" x 2½"
- 2 Tans** From each:  
Cut (80) squares 2½" x 2½"
- 8 Prints** From each:  
Cut (5) squares 4½" x 4½" for blocks
- Backing** Cut (2) panels 34" x 68", pieced to fit quilt top with overlap on all sides

## Fabric Requirements

		Yardage	Teal	Rose
<b>Fabric A</b>	center	1 yard	9124-B	9214-R
<b>Fabric B</b>	border 7, blocks	2 yards	9126-B	9216-R
<b>Fabric C</b>	border 1	¾ yard	9128-B	9128-R
<b>Fabric D</b>	border 6	1½ yards	9133-B	9133-R
<b>Fabric E</b>	border 4	1⅞ yards	9134-B	9134-R
<b>Fabric F</b>	border 2, binding	1 yard	9136-B	9136-RP
<b>Fabric G</b>	borders 3 & 5	⅝ yard	*9127-BN	**9127-RN
<b>2 Tans</b>	blocks	½ yard ea.	9135-RN	9135-B
			9138-BN	9138-RN
<b>8 prints</b>	block centers	fat ¼ yard ea.	9125-B	9125-R
			9125-BN	9125-RN
			9129-B	9129-RN
			9130-BG	9130-RP
			9131-B	9131-R
			9132-BN	9132-R
			9137-BN	9137-R
			9137-BY	9130-R
<b>Backing</b>		4 yards	*9127-BN	**9127-RN

## Making the Quilt

1. The blocks are made with quick stitch-and-flip piecing methods. Draw a diagonal line on the wrong side of each 2½" square. Referring to Diagram 1, place a marked square on a 4½" square, right sides together, aligning raw edges at the corner. Stitch on the drawn line; trim away and discard excess fabric. Press open. Repeat on the opposite corner, watching orientation of the sewing. Repeat on the remaining corners (Diagram 2). Refer to the quilt photograph to make the blocks in the combinations shown, or join fabrics as you desire. Make 60 blocks.

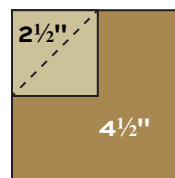


Diagram 1

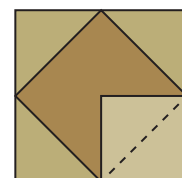
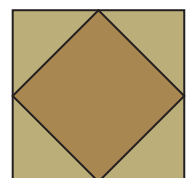


Diagram 2



Block Make 60

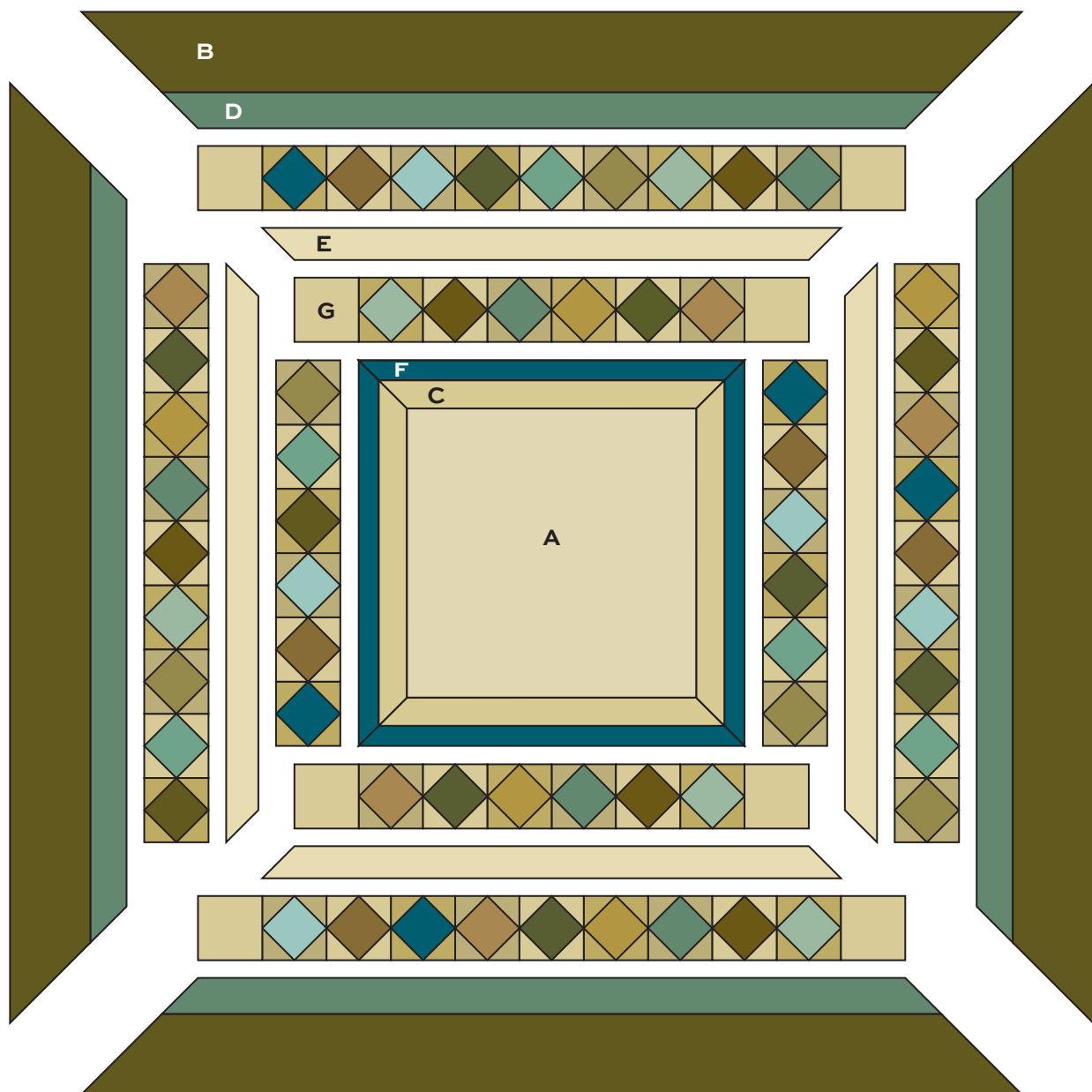


# Rochester Quilt

2. Refer to the Quilt Diagram for the following steps. Fussy-cut the 4 Fabric C borders lengthwise from the same part of the print. Sew the borders to each side of the Fabric A center square, starting and stopping stitching  $\frac{1}{4}$ " from the quilt's raw edge. Miter the corners and trim the excess. Repeat this step with Fabric F strips to add border 2.
3. Arrange the blocks around the center. Once you are satisfied with the arrangement, join 6 blocks to make a border 3. Make 4 border 3. Sew Fabric G squares to ends of 2 borders. Sew shorter pieced borders to opposite sides of the quilt. Sew longer pieced borders to the top and bottom.
4. Sew Fabric E border strips to the quilt and miter the corners.
5. Repeat Step 3, joining 9 blocks in each pieced border. Join Fabric G squares to ends. Sew borders to the quilt.
6. Add Fabric D and Fabric B borders to the quilt, and miter the corners.

## Finishing the Quilt

7. Layer the quilt with batting and backing and baste. Quilt in the ditch around borders and block patches. Quilt around the printed motifs in the Fabric A center and in the outer border. Bind to finish the quilt.



Quilt Diagram

# Rochester

BY DI FORD-HALL



9124-B\*



9125-B\*



9125-BN\*



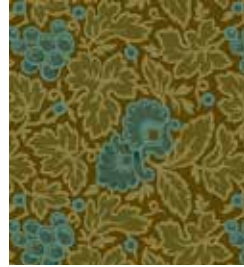
9125-R



9125-RN



9124-R



9126-B\*



9126-R



9127-BN\*



9127-RN



9128-B\*



9128-R



9129-B\*



9129-RN



9131-B\*



9131-R



9132-BN\*



9132-R



9133-B\*



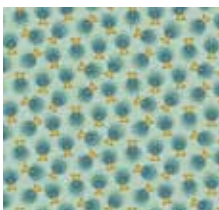
9133-R



9134-B\*



9134-R



9135-B



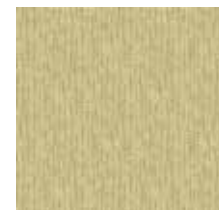
9135-RN\*



9136-B\*



9136-RP



9138-BN\*



9138-RN



9130-BG\*\*



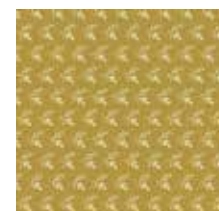
9130-R



9130-RP



9137-BN\*



9137-BY\*



9137-R

\*indicates fabrics used in featured quilt pattern. Fabrics shown are 25% of actual size.

andover : makower uk

Free Pattern Download Available

1384 Broadway New York, NY 10018  
Tel. (800) 223-5678 • andoverfabrics.com