

Tailor Made

Fabrics by Cosmo Cricket™



Quilt size: 48" x 60"

Quilt designed by Jean Ann Wright



makower uk®

1384 Broadway • New York, NY 10018 • (800) 223-5678 • www.andoverfabrics.com

Tailor Made Quilt

Introducing Andover Fabrics new collection: Tailor Made by Cosmo Cricket™
Quilt designed by Jean Ann Wright

Quilt finishes 48" x 60"
3 Panel Blocks: 12" x 18"
2 Rectangle Blocks: 6" x 12"
13 Square in a Square Blocks: 6"

Let your love of sewing be the focus of this delightful wall quilt/throw. The collection of fabrics includes old timey magazine pages, stripes of colorful tape measures, mini scissors, and sprightly posies. There aren't many blocks, and the piecing is easy.

Cutting Directions

Note: Mitered borders include 2" extra length plus seam allowances. WOF designates the width of fabric from selvedge to selvedge (about 42" wide).

Fabric A Cut (2) borders 6½" x 62½", cut lengthwise
Cut (2) borders 6½" x 50½", cut lengthwise

Fabric B Cut (6) 2½" x 18½", cut so stripes are perpendicular to long sides
Cut (10) 2½" x 12½", cut so stripes are perpendicular to long sides

Fabric C Cut (5) strips 1½" x WOF and piece to make the following:
(2) borders 1½" x 46½"
(2) borders 1½" x 34½"
Cut (13) squares 4¾"
Cut (2) rectangles 2½" x 12½"

Fabric D Cut (1) panel 8½" x 14½"

Fabric E Cut (1) panel 8½" x 14½"

Fabric F Cut (1) panel 8½" x 14½"

Fabric G Cut (8) squares 4", cut in half diagonally to make 16 half-square triangles

Fabric H Cut (12) squares 4", cut in half diagonally to make 24 half-square triangles

Fabric Requirements

| | | Yardage | |
|------------------|-------------------------|----------|---------|
| Fabric A | border | 2 yards | 5151-L |
| Fabric B | rectangle, panel blocks | ¾ yard | 5152-Y |
| Fabric C | blocks, borders | ¾ yard | 5153-Y |
| Fabric D | panel block | ½ yard | 5155-G |
| Fabric E | panel block | ½ yard | 5155-O |
| Fabric F | panel block | ½ yard | 5155-Y |
| Fabric G | square in square blocks | ¼ yard | 5157-G |
| Fabric H | square in square blocks | ⅜ yard | 5157-R |
| Fabric I | blocks, border, binding | 1¼ yards | 5157-T |
| Fabric J | letters | ¼ yard | 1867-R8 |
| Fabric K* | backing | ¾ yards | 5154-Y |

Fabric I Cut (5) strips 2½" x WOF and piece to make the following:
(2) borders 2½" x 50½"
(2) borders 2½" x 38½"
Cut 6 strips 2½" x WOF for binding
Cut (6) squares 4", cut in half diagonally to make 12 half-square triangles

Fabric J Cut 13 appliqué letters, hearts, and flowers

*Additional fabric required for backing.

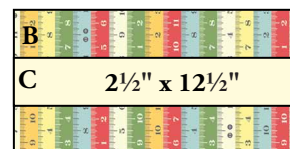
Backing Cut (2) panels 35" x 56"

Also needed: Fusible web

Making the Blocks

1. Referring to the block diagram, join patches to make 2 Rectangle Blocks, using the fabrics indicated. Press the seam allowances away from the center strip.

Rectangle Block



Make 2

Tailor Made Quilt

- To make the Panel Blocks, cut $8\frac{1}{2}'' \times 14\frac{1}{2}''$ rectangles from the 3 fabrics, cutting each panel from a different part to obtain varied images. Sew the short striped strips to the top and bottom, starting and stopping stitching $\frac{1}{4}''$ from the quilt's edges. Sew the long strips to the sides in the same way. The stripes are not intended to match in the corners precisely—that's part of the quilt's charm. Miter the corners in the usual way, or fold under the short strip from the inside corner to the outside edge so that it forms a neat 45° fold. Use a square acrylic ruler to be sure that the corners are square. Hand stitch the turned edge of the short strip on top of the side strip. Trim the excess fabric. Repeat on all corners.

Panel Blocks



Make 1



Make 1

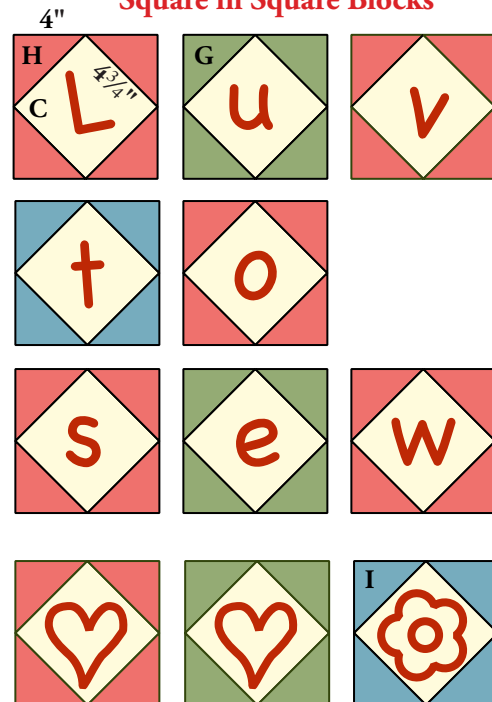
- To make the Square in a Square Blocks, sew a 4" half-square triangle to each side of a $4\frac{3}{4}''$ C fabric square. Press the seams away from the center square. The half-square triangles are a bit over-sized to allow for trimming if needed. Measure the sewn square. Trim to $6\frac{1}{2}''$ if needed, being sure to leave $\frac{1}{4}''$ seam allowances all around. Make 6 red blocks, 4 green blocks, and 3 teal blocks.



Make 1

- It is easier to appliqué the letters, hearts and flowers to the Square in a Square Blocks now. Templates are printed reversed and without seam allowance for use with fusible web. Trace each motif onto paper side of paper-backed fusible web. Roughly cut out the paper motifs. Following manufacturer's instructions, fuse paper motifs to wrong side of fabric J. Cut out letters and hearts on the drawn lines. Remove the backing paper, and fuse into place in center of each block, following manufacturer's instructions. Finish edges with decorative machine stitching or a blind hemstitch.

Square in Square Blocks



Make 1

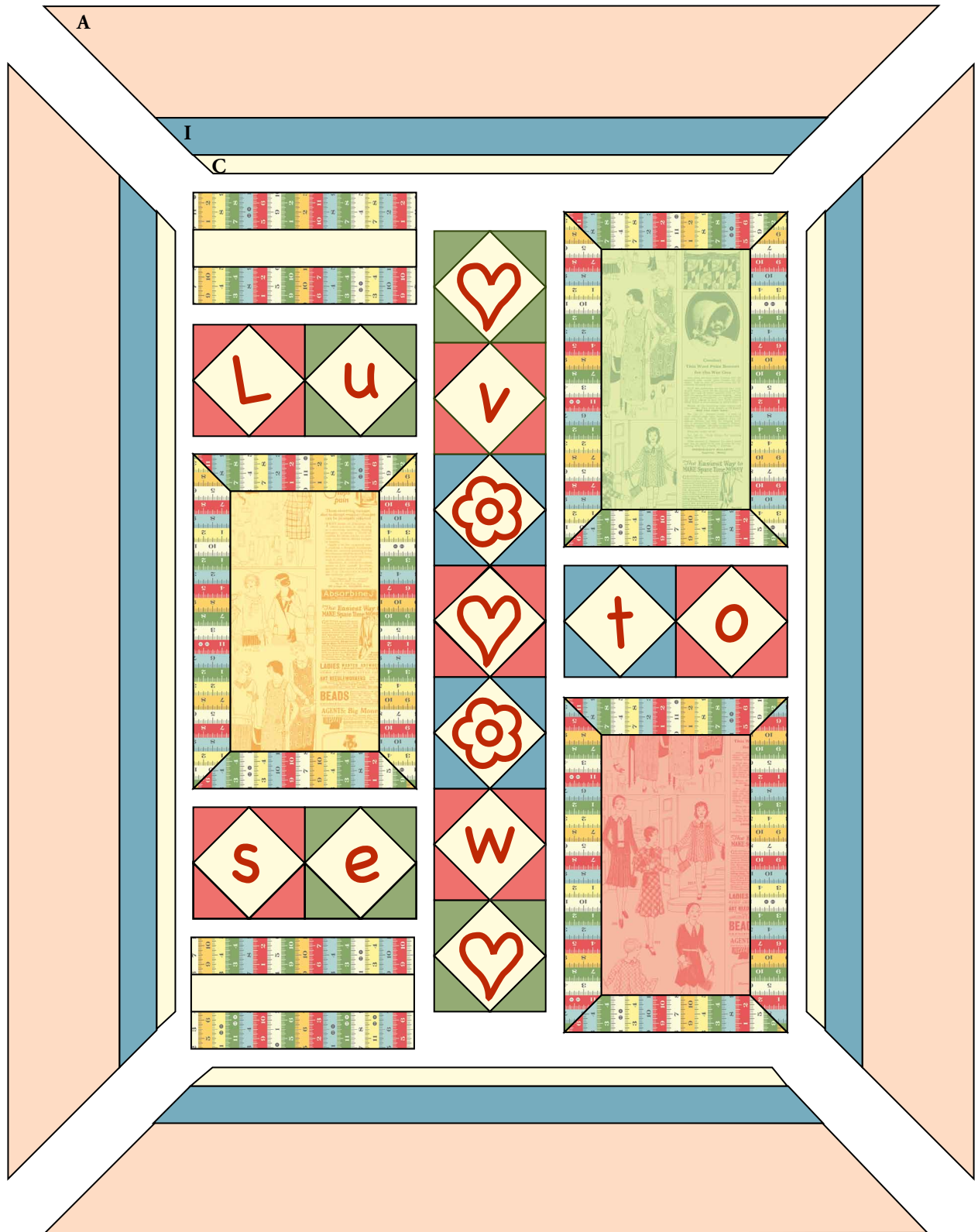
Make 2

Make 2

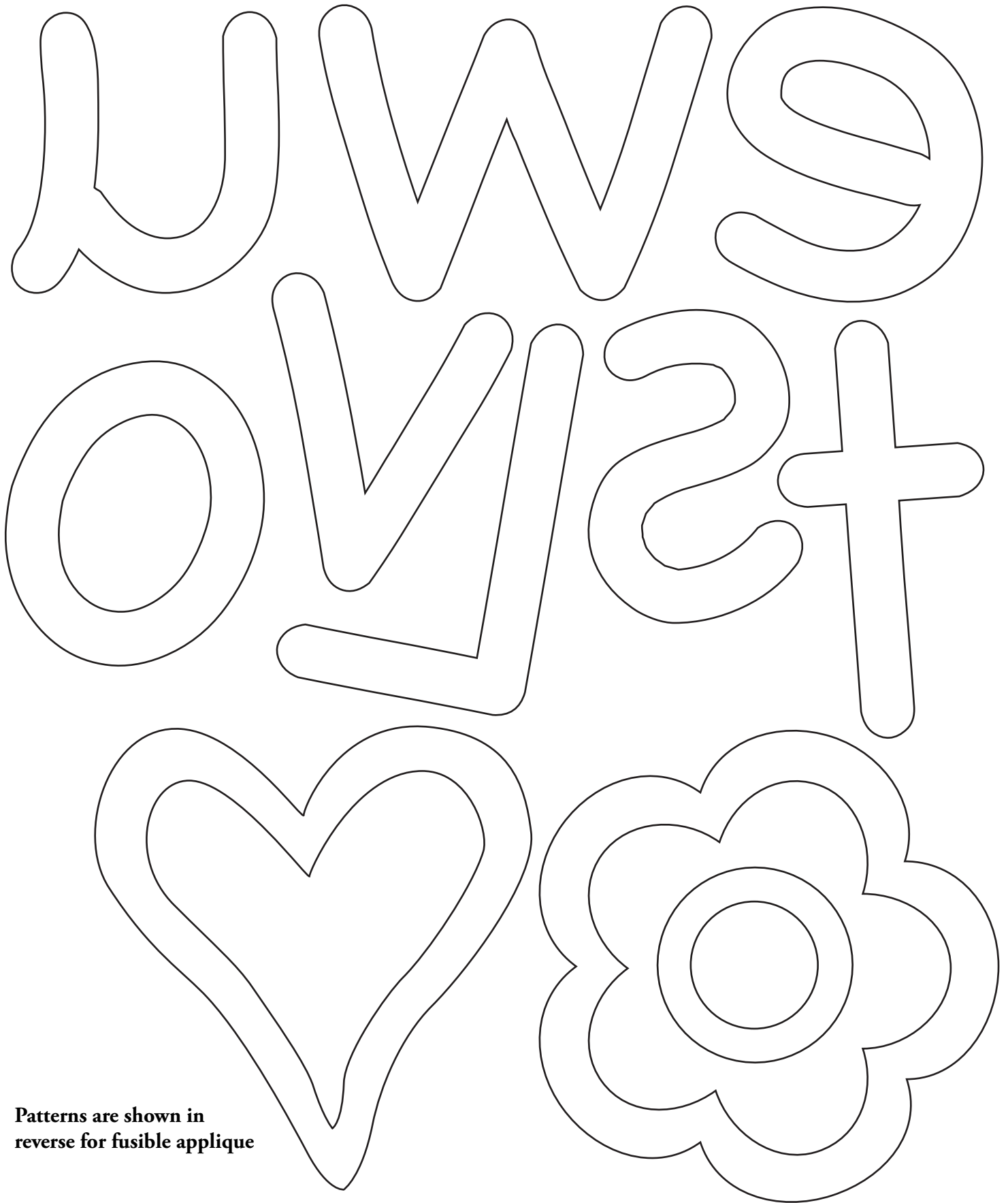
- Refer to the Quilt Diagram throughout the assembly. Lay out all the blocks on a flat surface in 3 vertical rows, turning the little blocks so that all appliqué motifs are upright. Join the blocks into units as needed, and join the units to make vertical rows. Join the rows.
- Sew short border strips together to make border units for the top and bottom. Sew long border strips to make border units for the sides. Sew border units to the quilt, referring to instructions above to miter the corners. Trim the excess.

Finishing the Quilt

- Layer quilt with batting and backing. Quilt in the ditch around borders and block patches. Quilt around the printed motifs in the large panels. Bind to finish the quilt.



Quilt Diagram



Patterns are shown in
reverse for fusible applique

Tailor Made

by Cosmo Cricket™



5155-G*



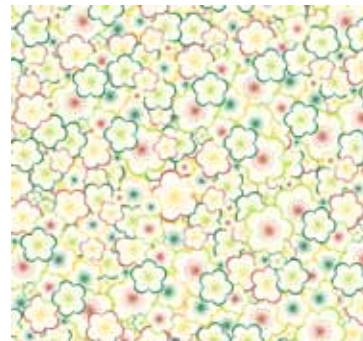
5151-L*



5152-AK



5155-O*



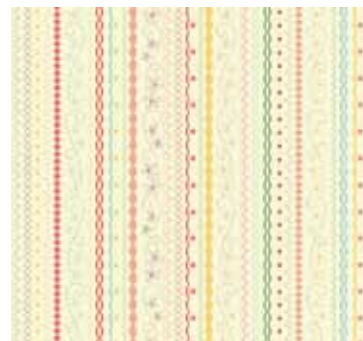
5153-Y*



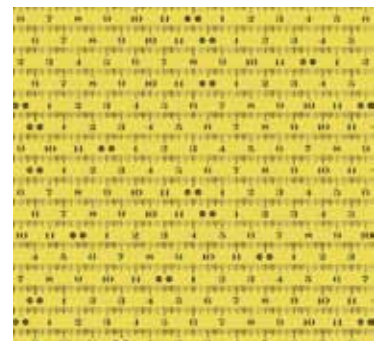
5152-Y*



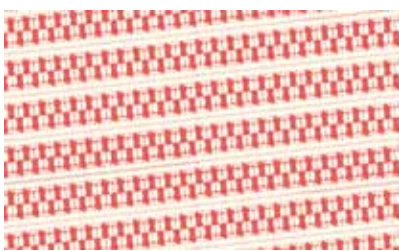
5155-Y*



5154-Y*



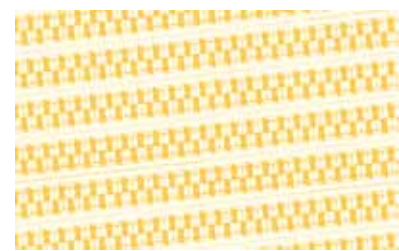
5152-YK



5156-R



5156-T



5156-Y



1867-T14



1867-R8*



5157-L



5157-G*



5157-R*



5157-T*



1867-Y1

*Indicates fabric used in quilt pattern. Fabrics shown are 15% of actual size.