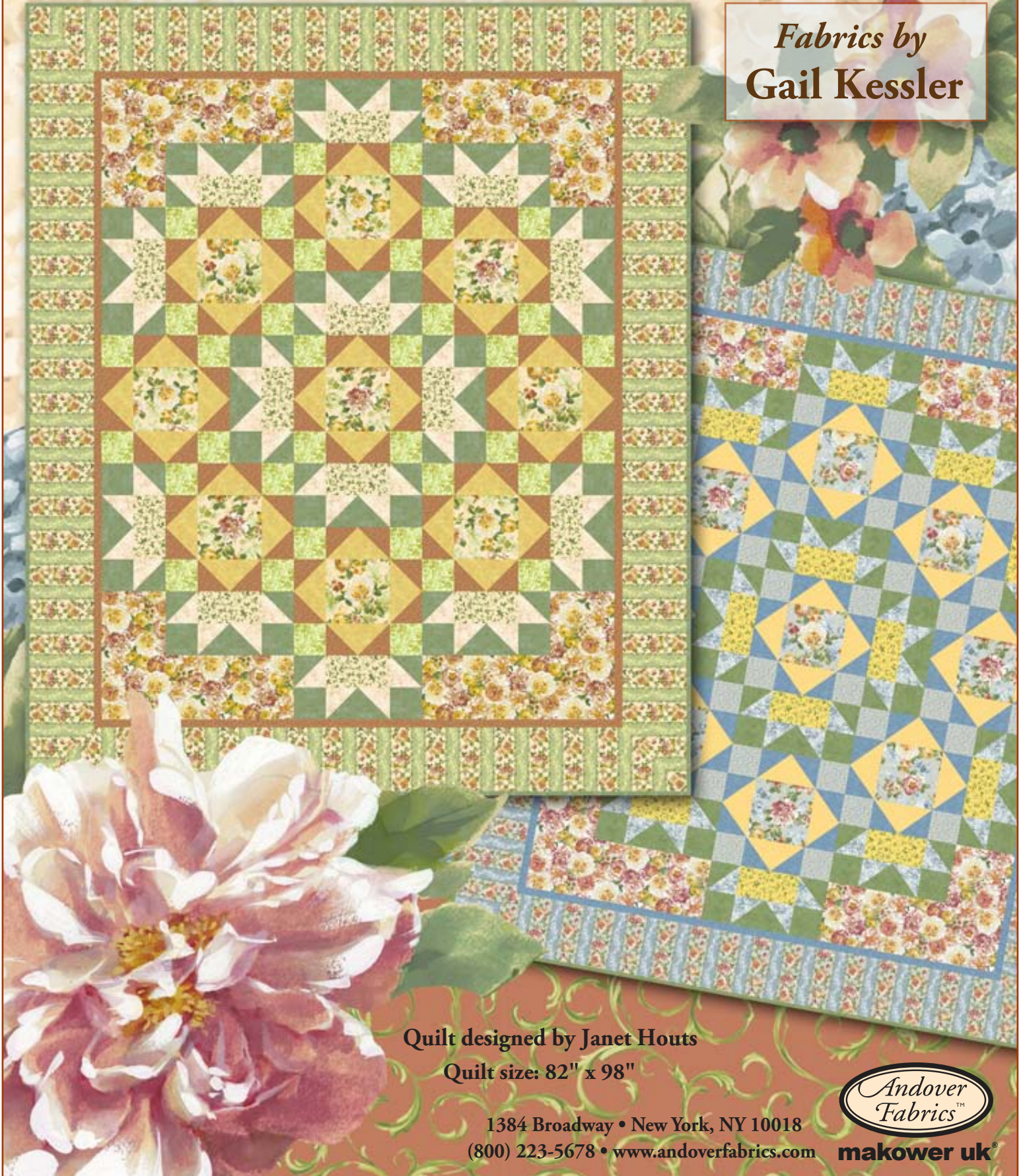


Wilhelmeana's Garden

Fabrics by
Gail Kessler



Quilt designed by Janet Houts

Quilt size: 82" x 98"

1384 Broadway • New York, NY 10018

(800) 223-5678 • www.andoverfabrics.com



makower uk

Wilhelmeana's Garden Quilt

Introducing Andover Fabrics new collection: Wilhelmeana's Garden by Gail Kessler

Quilt designed by Janet Houts

Quilt finishes 82" x 98"
9 pieced blocks 16" x 16"

Make use of the beautiful prints in the Wilhelmeana's Garden collection in this easy-to-stitch bed-size quilt. The setting may look complicated, but it's not. If you like jigsaw puzzles, you will really enjoy sewing the blocks and setting units and borders together to create the unique overall design.

Cutting Directions

Note: Border measurements are given in the exact lengths required, including ¼" seam allowances. WOF designates the width of fabric from selvedge to selvedge (approximately 42" wide).

Fabric A Cut (9) squares 8½" x 8½"

Fabric B Cut (4) rectangles 8½" x 24½"
Cut (4) squares 8½" x 8½"

Fabric C Cut (10) strips 8½" x WOF; pieced together to continue stripe to make the following: 2 borders 8½" x 104" and 2 borders 8½" x 86"

Fabric D Cut (28) squares 4⅞" x 4⅞" and cut in half once diagonally to make 56 half-square triangles

Fabric E Cut (36) squares 4½" x 4½"

Fabric F Cut (14) rectangles 4½" x 8½"

Fabric G Cut (36) squares 4⅞" x 4⅞" and cut in half once diagonally to make 72 half-square triangles
Cut (8) strips 1½" x WOF; pieced together to make the following: 2 borders 11½" x 80½" and 2 borders 1½" x 66½"

Fabric H Cut (28) squares 4½" x 4½"
Cut (14) squares 4⅞" x 4⅞" and cut in half once diagonally to make half-square triangles
Cut (4) squares 9¼" x 9¼" and cut twice diagonally to make quarter-square triangles
Cut (9) strips 2½" x WOF for binding

Fabric I Cut (9) squares 9¼" x 9¼" and cut twice diagonally to make quarter-square triangles

Backing Cut (3) panels 42" x 90" and piece to fit quilt top with 4" overlap on all sides

Fabric Requirements

	Yardage	Green	Blue
Fabric A blocks	⅞ yard	4970-L	4970-B
Fabric B quilt corners	1⅛ yard	4971-L	4971-B
Fabric C outer border	2½ yards	4972-G	4972-B
Fabric D sashing units	⅔ yards	4973-L	4973-B
Fabric E blocks	⅝ yard	4973-G	4975-B
Fabric F sashing units	⅝ yard	4974-L	4974-Y
Fabric G blocks, inner border	1⅛ yard	4975-E	1867-T6
Fabric H* sashing units	1⅞ yards	1867-G8	1867-G14
Fabric I blocks	1 yard	1867-Y	4975-Y
Fabric F backing	7⅝ yards	4970-L	4970-B

*includes binding

Making the Blocks

1. Refer to Diagram 1 for block piecing.
2. To complete one block, sew a fabric I triangle to each side of a fabric A square to make an A-I center unit. Press seam allowances toward the fabric A square.
3. Sew a fabric G triangle to two adjacent sides of a fabric E square to make an E-G corner unit. Press seam allowances toward the fabric G triangles. Repeat to make four E-G corner units.
4. Sew an E-G corner unit to each side of the A-I center unit to complete one block. Press seam allowances toward the corner units.
5. Repeat steps 2–4 to complete nine blocks.

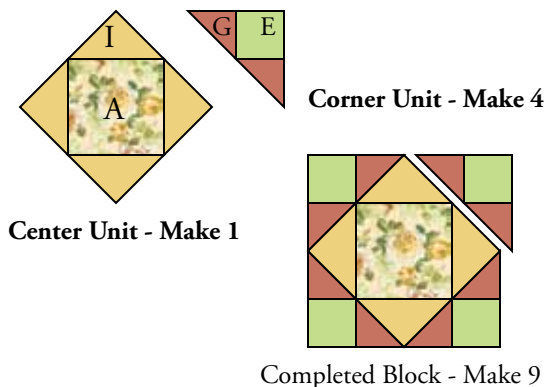


Diagram 1 - Block Piecing

Wilhelmeana's Garden Quilt

Making the Sashing Units

6. Refer to Diagram 2 for piecing sashing units.
7. Sew a fabric D half-square triangle to two short sides of a fabric H quarter-square triangle to make a side unit. Press seam allowances toward the fabric D triangles. Repeat to make a total of 14 side units.
8. Sew a fabric D half-square triangle to a fabric H half-square triangle to make a triangle/square unit. Press seam allowance toward the fabric H triangle. Repeat to make a total of 28 triangle/square units.
9. To complete one sashing unit, sew a fabric H square to each end of one side unit to make a row. Press seam allowances toward the fabric H squares.
10. Sew a triangle/square unit to opposite short ends of a fabric F rectangle to make an F row. Press seam allowances toward the fabric F rectangle.
11. Join the two pieced rows to complete a sashing unit. Press seam allowances toward the F row.
12. Repeat steps 7–11 to make a total of 14 sashing units.



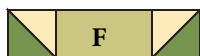
Side Unit - Make 14



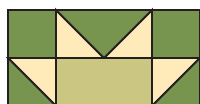
Triangle/Square Unit
Make 28



Side Unit Row
Make 14



F Row - Make 14

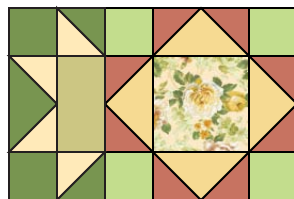


Sashing Unit
Make 14

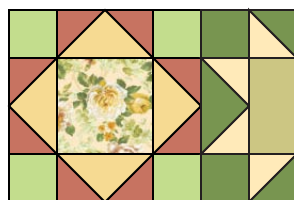
Diagram 2

Quilt Assembly

13. Refer to the Assembly Diagram on the following page for joining rows and units to complete the pieced top.
14. Arrange and join three blocks and four sashing units to make the center row. Press seam allowances toward the sashing units.
15. Sew a sashing unit to a block to make a block/sashing unit. Press seam allowance toward the sashing unit. Repeat to make a total of six block/sashing units. Note that two sashing units are on the right side of two blocks and four are on the right side of the blocks. See Diagram 3.
16. Sew a fabric B square to one end of a sashing unit to make a B/sashing unit. Press seam allowance toward the fabric B square. Repeat to make two B/sashing units and two B/sashing units reversed. Sew a fabric B rectangle to each of these sashing units. See Diagram 4.
17. Join two fabric B rectangles with one each B/sashing unit and B/sashing unit reversed and three block/sashing units to make a side row. Press seam allowances toward fabric B rectangles and in one direction. Repeat to make a second side row in reverse.
18. Sew side rows to opposite long sides of the center row. Press seams allowances toward the side rows.
19. Sew an 80½" fabric G strip to opposite long sides and a 66½" fabric G strip to the top and bottom of the pieced center. Press seam allowances toward the fabric G strips.
20. Fold the pieced center in half on both length and width; crease to mark centers, then unfold. Fold each 104" fabric C strip and each 86" fabric C strip in half and crease to mark centers. Aligning creased center marks, stitch the border strips to each side of the pieced center, beginning and ending ¼" from corners; miter corners, matching stripes and trim excess fabric. Press seam allowances toward the fabric C strips.

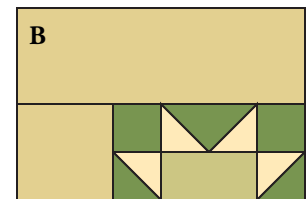


Make 4

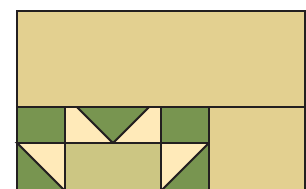


Make 2

Diagram 3



Make 2



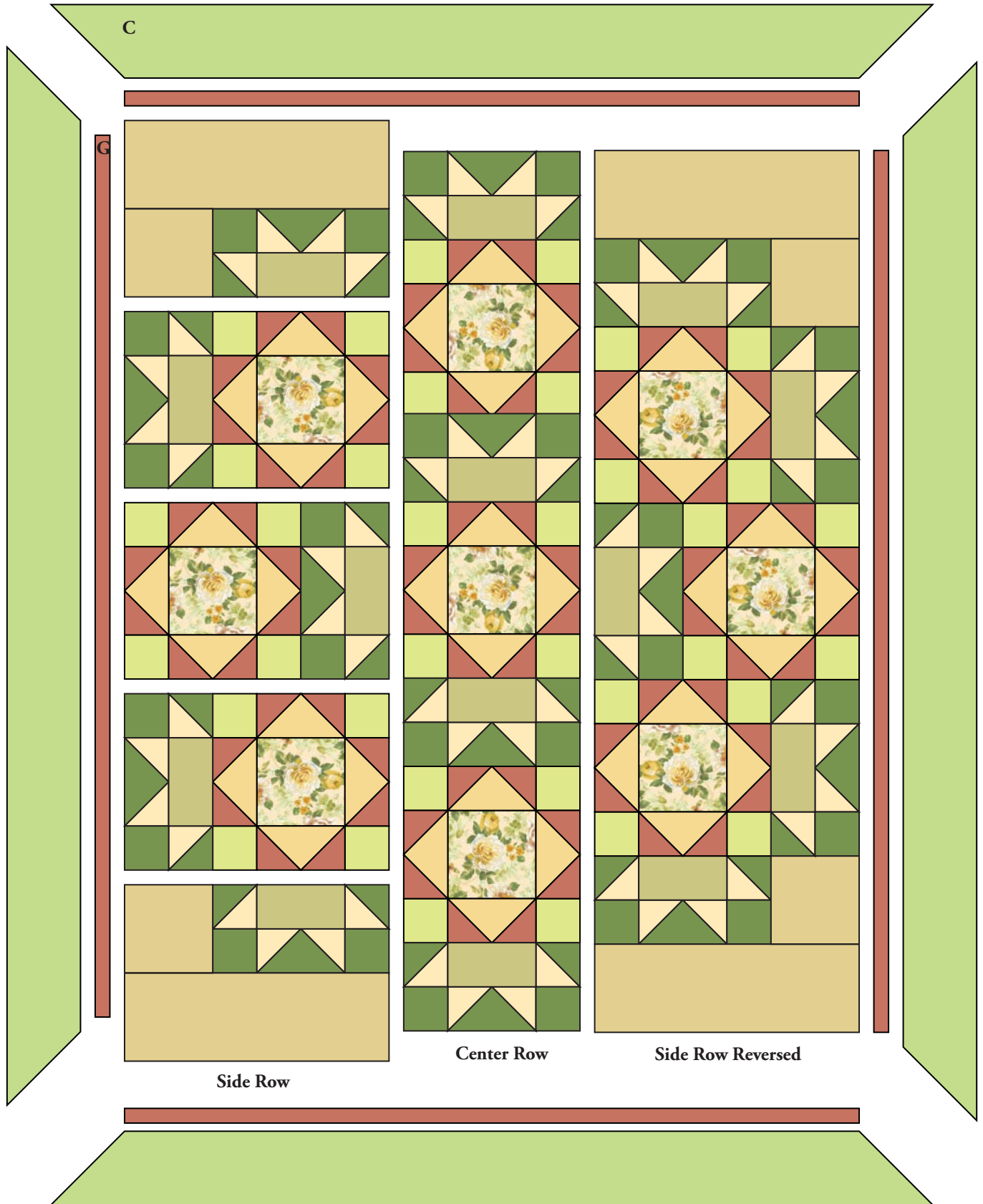
Make 2

Diagram 4

Finishing the Quilt

21. Layer quilt top with batting and backing. Quilt in the ditch of seams and as desired. Bind to finish the quilt.

Wilhelmeana's Garden Quilt



Quilt Assembly Diagram

1384 Broadway
 New York, NY 10018
 (800) 223-5678
 www.andoverfabrics.com

Wilhelmeana's Garden

by Gail Kessler



4970-L*



4971-L*



4972-G*



4973-L*



4973-G*



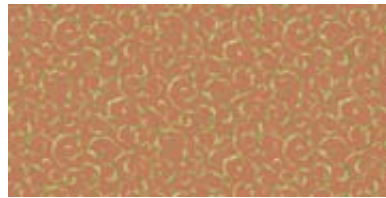
1867-G8*



1867-Y*



4974-L*



4975-E*



1867-N10



4970-B*



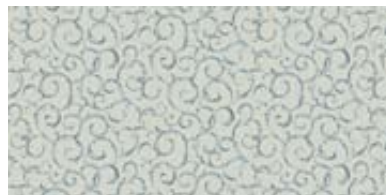
4971-B*



4972-B*



4973-B*



4975-B*



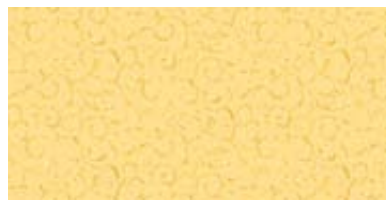
1867-G14*



1867-T6*



4974-Y*



4975-Y*



1867-E17

*Indicates fabric used in quilt pattern. Fabrics shown are 20% of actual size.