

# WINTERTHUR CADET PAISLEY



Quilt designed by Gail Kessler • Quilt size: 90" x 90"

*Fabrics by*  
**by Kathy Hall for  
Winterthur Museum  
and Country Estates**

1384 Broadway  
New York, NY 10018  
(800) 223-5678

[www.andoverfabrics.com](http://www.andoverfabrics.com)



**makower uk**®

8/9/10

# Cadet Paisley Quilt

*Introducing Andover Fabrics new collection: Cadet Paisley by Kathy Hall  
for Winterthur Museum and Country Estates  
Quilt designed by Gail Kessler*

*Bring the romance of Winterthur, one of America's grandest historic country estates, into your home with Kathy Hall's richly-colored prints. Make this queen size quilt, with its starry center block and varied borders, the centerpiece of a beautiful bedroom.*

Quilt finishes 90" x 90"  
1 center star block 32" x 32"  
24 square-in-a-square blocks 6" x 6"

## Fabric Requirements

		Yardage	Blue	Light
<b>Fabric A</b>	Center square, border 6	6 yards	5144-B	5144-L
<b>Fabric B</b>	Center square background	1 <sup>3</sup> / <sub>8</sub> yards	5145-B	5145-L
<b>Fabric C</b>	Borders 1 and 4	1 <sup>5</sup> / <sub>8</sub> yards	5146-B	5146-N
<b>Fabric D</b>	Center star points, border 3	<sup>3</sup> / <sub>4</sub> yard	5149-Y	5147-RN
<b>Fabric E</b>	Center star points, borders 3 and 5	1 <sup>1</sup> / <sub>8</sub> yards	5149-L	5149-N
<b>Fabric F</b>	Corner squares, borders 2 and 4	<sup>1</sup> / <sub>2</sub> yard	5148-R	5148-RN
<b>Fabric G*</b>	Borders 2 and 5	2 <sup>1</sup> / <sub>8</sub> yards	5147-R	5147-N
*includes binding				
<b>Backing</b>		8 <sup>1</sup> / <sub>4</sub> yards	5148-R	5148-RN

## Cutting Directions

**Note:** Measurements for borders 1 and 4 are the exact length required plus <sup>1</sup>/<sub>4</sub>" seam allowances. Measurements for border 6 include 2" extra plus <sup>1</sup>/<sub>4</sub>" seam allowances. WOF designates the width of fabric from selvedge to selvedge (approximately 42" wide).

**Fabric A** Border 6: Cut (4) borders 9<sup>1</sup>/<sub>2</sub>" x 92<sup>1</sup>/<sub>2</sub>" from the length of the fabric  
Center star: Cut (1) square 16<sup>1</sup>/<sub>2</sub>" x 16<sup>1</sup>/<sub>2</sub>"

**Fabric B** Center star block background:  
Cut (4) squares 8<sup>1</sup>/<sub>2</sub>" x 8<sup>1</sup>/<sub>2</sub>"  
Cut (1) square 17<sup>1</sup>/<sub>4</sub>" x 17<sup>1</sup>/<sub>4</sub>"; cut this square diagonally both ways to make (4) quarter-square triangles  
Border 2: Cut (24) squares 6<sup>1</sup>/<sub>2</sub>" x 6<sup>1</sup>/<sub>2</sub>"

**Fabric C** Centering each strip on the same part of the stripe, from the length of the fabric cut:  
Border 4: (4) borders 6<sup>1</sup>/<sub>2</sub>" x 54<sup>1</sup>/<sub>2</sub>"  
Border 1: (2) top/bottom borders 2<sup>1</sup>/<sub>2</sub>" x 36<sup>1</sup>/<sub>2</sub>"  
(2) side borders 2<sup>1</sup>/<sub>2</sub>" x 32<sup>1</sup>/<sub>2</sub>"

**Fabric D** Center star points: Cut (2) squares 9<sup>1</sup>/<sub>4</sub>" x 9<sup>1</sup>/<sub>4</sub>"  
Cut each square diagonally both ways to make (4) quarter-square triangles (8 total)  
Border 3: Cut (8) squares 7<sup>1</sup>/<sub>4</sub>" x 7<sup>1</sup>/<sub>4</sub>"  
Cut each square diagonally both ways to make (4) quarter-square triangles (32 total)

**Fabric E** Center star points: Cut (2) squares 9<sup>1</sup>/<sub>4</sub>" x 9<sup>1</sup>/<sub>4</sub>"  
Cut each square diagonally both ways to make (4) quarter-square triangles (8 total)  
Borders 3 and 5: Cut (18) squares 7<sup>1</sup>/<sub>4</sub>" x 7<sup>1</sup>/<sub>4</sub>"  
Cut each square diagonally both ways to make (4) quarter-square triangles (72 total)  
Cut (4) squares 3<sup>7</sup>/<sub>8</sub>" x 3<sup>7</sup>/<sub>8</sub>"; cut each square diagonally once to make (2) half-square triangles (8 total)  
Cut (8) squares 3<sup>1</sup>/<sub>2</sub>" x 3<sup>1</sup>/<sub>2</sub>"

**Fabric F** Borders 2 and 4: Cut (8) squares 6<sup>1</sup>/<sub>2</sub>" x 6<sup>1</sup>/<sub>2</sub>"

**Fabric G** Binding: Cut 10 strips 2<sup>1</sup>/<sub>4</sub>" x WOF  
Corners of square-in-a-square blocks:  
Cut (96) squares 3<sup>1</sup>/<sub>2</sub>" x 3<sup>1</sup>/<sub>2</sub>"  
Border 5: cut (10) squares 7<sup>1</sup>/<sub>4</sub>" x 7<sup>1</sup>/<sub>4</sub>"  
Cut each square diagonally both ways to make (4) quarter-square triangles (40 total)  
Cut (4) squares 3<sup>7</sup>/<sub>8</sub>" x 3<sup>7</sup>/<sub>8</sub>"; cut each square diagonally once to make (2) half-square triangles (8 total)

**Backing** Cut (3) panels 33" x 94", pieced to fit quilt top with 4" overlap

# Cadet Paisley Quilt

## Making & Assembling the Quilt

1. Make the center star block. Refer to diagram 1 to make the center star block. Join (8) pairs of Fabric D and Fabric E center star point triangles along short sides. Make 4 pairs with D on the right and 4 pairs with E on the right. Referring to the piecing diagram, sew 2 D/E points to a Fabric B triangle to make a star point unit. Repeat to make 4 star point units like this.
2. Arrange the star point units, the fabric A square, and (4)  $8\frac{1}{2}$ " x  $8\frac{1}{2}$ " Fabric B squares to form the center star block as shown. Join the patches in rows, and then join the rows. Press.

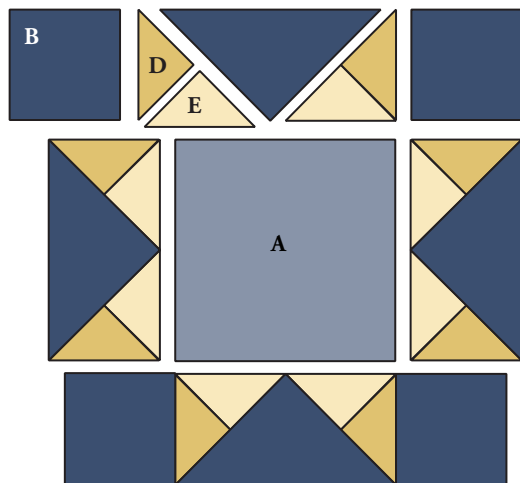


Diagram 1

3. Add border 1. Matching centers and ends, join the shorter Fabric C border 1 strips to the sides of the center star. Press the borders away from the star. Similarly, sew the remaining Fabric C border 1 strips to the top and bottom of the star and press.
4. Make the square-in-a-square blocks for border 2. Referring to diagram 2, align two Fabric G  $3\frac{1}{2}$ " x  $3\frac{1}{2}$ " squares right sides together with opposite corners of a  $6\frac{1}{2}$ " x  $6\frac{1}{2}$ " Fabric B square. Mark lines on the G squares, from corner to corner, as shown. Stitch on the marked lines and trim excess fabric, leaving  $\frac{1}{4}$ " seam allowance. Press the triangles open. Repeat for the remaining corners. Make 24 square-in-a-square blocks.

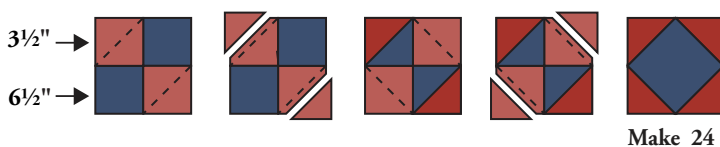


Diagram 2

5. Referring to the quilt assembly diagram, join 6 square-in-a-square blocks side to side to make a border 2 strip. Make 4 border 2 strips like this. Matching centers and ends, sew 2 strips to the sides of the quilt. Press the strips away from the quilt. Sew a  $6\frac{1}{2}$ " x  $6\frac{1}{2}$ " Fabric F square to the ends of the remaining border 2 strips. Matching centers, ends, and side seams, sew these borders to the top and the bottom of the quilt.
6. Make border 3. Referring to diagram 3, right sides together, align a quarter-square triangle from Fabric D with one of Fabric E along short sides, offsetting the points  $\frac{1}{4}$ " as shown. Stitch with a  $\frac{1}{4}$ " seam and press the triangles open. Referring to the quilt assembly diagram, join 8 fabric D quarter-square triangles alternately with 7 fabric E quarter-square triangles in this manner. Sew a Fabric E half-square triangle to each end of the pieced strip. Press carefully without stretching the strip.

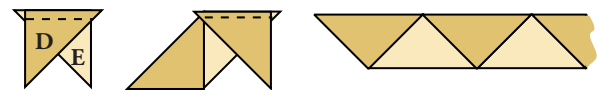


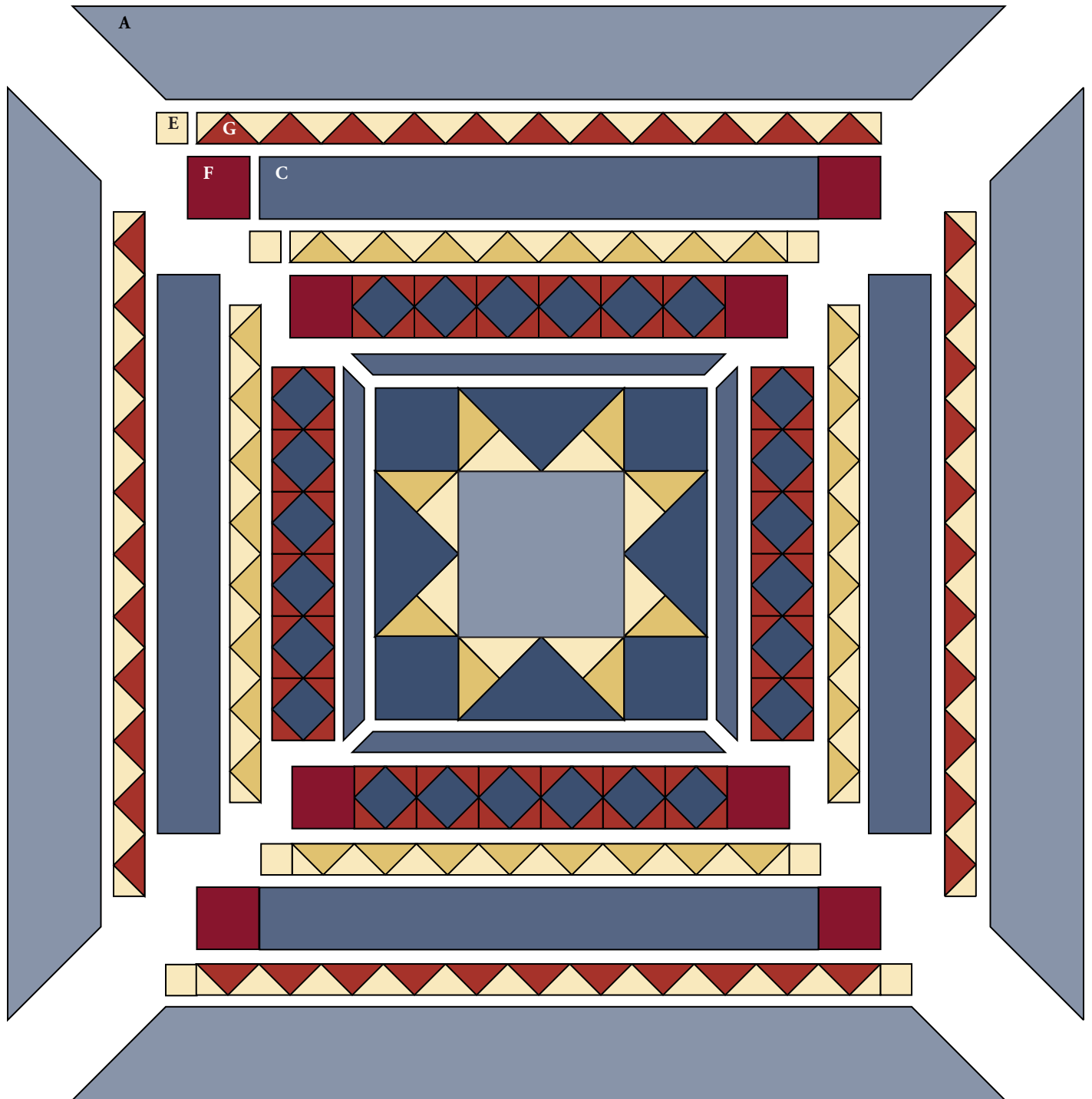
Diagram 3

7. Matching centers and ends, join pieced strips to the sides of the quilt. Sew a  $3\frac{1}{2}$ " x  $3\frac{1}{2}$ " Fabric E square to each end of the remaining pieced strips. Matching centers, ends, and side seams, sew these strips to the top and the bottom of the quilt.
8. Matching centers and ends, join borders to the sides of the quilt. Sew a  $3\frac{1}{2}$ " x  $3\frac{1}{2}$ " Fabric E square to each end of the remaining borders. Matching centers, ends, and side seams, sew these borders to the top and the bottom of the quilt.
9. Matching centers, join the Fabric A borders to the sides of the quilt, starting and stopping the stitching  $\frac{1}{4}$ " away from the edges of the quilt. Miter the corners. Trim the excess fabric, leaving a  $\frac{1}{4}$ " seam allowance. Press the seam allowances open.

## Finishing the Quilt

10. Layer quilt with batting and backing. Quilt in the ditch around borders and block patches. Quilt around the printed motifs in the center square and in border 6. Bind to finish the quilt.

# Cadet Paisley Quilt



**Quilt Diagram**

# CADET PAISLEY

by Kathy Hall for Winterthur Museum and Country Estates



5144-B\*



5146-B\*



5145-B\*



5147-R\*



5148-R\*



5149-Y\*



5147-RN



5144-L



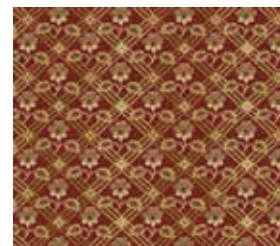
5146-N



5145-L



5147-N



5148-RN



5149-L\*



5149-N

\*Indicates fabric used in quilt pattern. Fabrics shown are 20% of actual size.