

# Winterthur Hearthstone



*Featuring*  
**Winterthur Hearthstone  
Collection**

by Kathy Hall for Winterthur Museum  
and Country Estates  
Quilt designed by Jean Ann Wright  
and made by Jan Crandall

Finished size: 88" x 88"



**makower uk**<sup>®</sup>

1384 Broadway • New York, NY 10018  
(800) 223-5678 • [www.andoverfabrics.com](http://www.andoverfabrics.com)

# Winterthur Hearthstone Quilt

*Introducing Andover Fabrics new collection: Winterthur Hearthstone by Kathy Hall  
for Winterthur Museum and Country Estates  
Quilt designed by Jean Ann Wright and made by Jan Crandall*

## Planning

Elegant floral prints and stripes that hark back to an earlier age are beautifully displayed in this queen-size topper. Simple construction with large patches makes quick work of this pieced quilt. Fussy-cutting the floral prints and stripes adds to the charm.

Quilt finishes 88" x 88"  
24 Pieced Blocks: 24" x 24"  
4 Corner Blocks: 6" x 6"  
8 Border Units: 6" x 24"

## Fabric Requirements & Cutting Directions

**Note:** Sashes are cut the exact lengths required plus 1/4" seam allowances. Mitered borders include 2" extra length plus seam allowances.

### 4087-R 2¼ yards Red with Black Flowers (blocks, setting squares, inner border, binding)

Cut (4) borders 2" x 74½", cut lengthwise  
Cut (5) strips 2½" x 75", cut lengthwise for binding  
Cut (4) 12½" squares, fussy-cut to center flowers  
Cut (9) 3½" setting squares

### 4088-Y 2¾ yards Yellow Stripe (outer border)

Cut (4) borders 8½" x 90½", fussy-cut lengthwise to center stripe

### 4089-K ¾ yard Black Fancy Flowers (blocks, border units, corner blocks)

Cut (36) 4¾" squares

### \*4090-K 1 yard Cream Wreaths (long and short sashes)

Cut (12) long sashes 3½" x 24½"  
Cut (12) short sashes 3½" x 6½"

### 4091-Y ¾ yard Yellow Lines (blocks, border units, corner blocks)

Cut (54) 3⅞" squares, cut in half diagonally to make 108 half-square triangles

### 4092-K ⅞ yard Black Tone-on-Tone Print (blocks, border units)

Cut (24) strips 3½" x 12½"

### 4092-L 1 yard Cream Tone-on-Tone Print (blocks, border units, corner blocks)

Cut (24) strips 3½" x 12½"  
Cut (18) 3⅞" squares, cut in half diagonally to make 36 half-square triangles

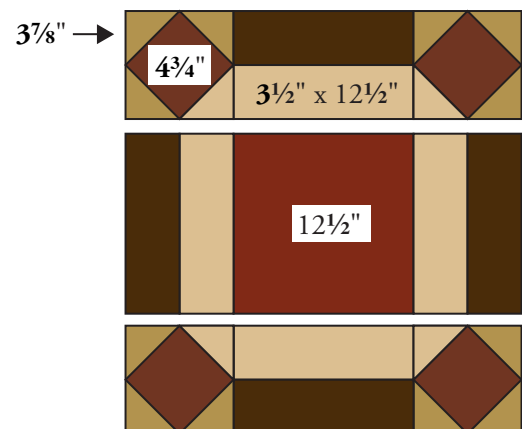
\*Additional fabric required for backing

### \*4090-K 8 yards Cream Wreaths (backing)

Cut 3 panels 33" x 96", and piece to fit quilt top with 4" overlap on all sides.

## Making & Assembling the Quilt

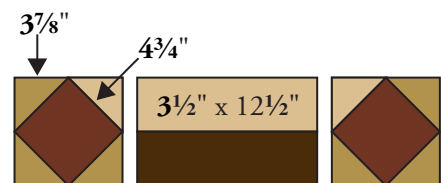
1. Fussy-cut the red print 12½" squares to center the flowers. Referring to the diagrams, join patches to make 4 blocks, positioning the cream tone-on-tone patches as shown. Make 8 border units and 4 corner blocks, again paying attention to placement of the cream patches.



**Block**  
Make 4



**Corner Block**  
Make 4



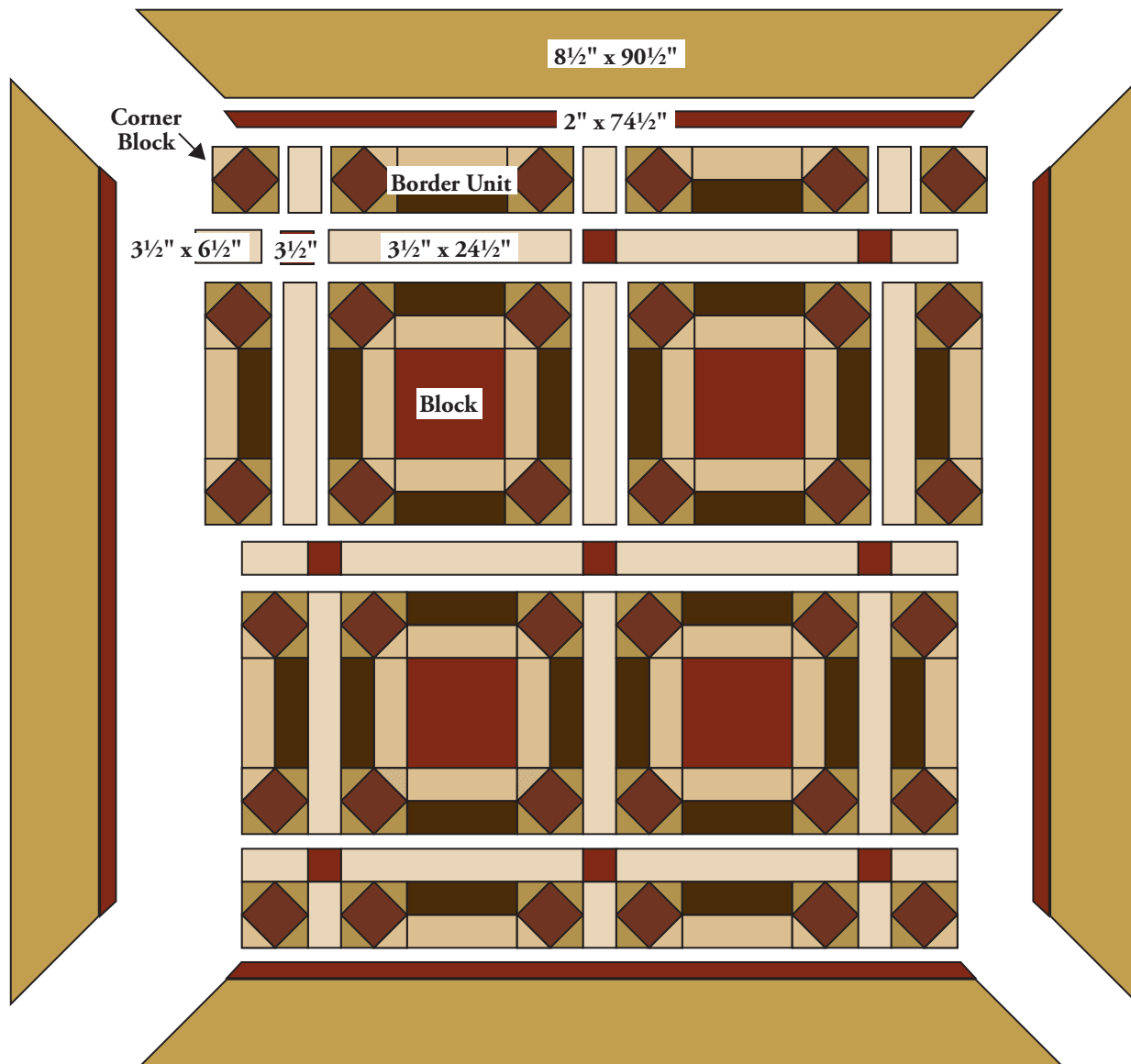
**Border Unit**  
Make 8

# Winterthur Hearthstone Quilt

2. Refer to the Quilt Diagram throughout the assembly. Join 2 corner blocks, 3 short sashes, and 2 border units to make top pieced row, rotating the border units as needed to duplicate the placement shown in the diagram. Press seam allowances toward short sashes. Repeat to make the bottom row.
3. Join 2 short sashes, 3 red setting squares, and 2 long sashes to make a sash row. Press seam allowances toward long and short sashes. Make 3 like this.
4. Join 2 border units, 3 long sashes, and 2 blocks to make a block row, again rotating border units as needed. Press seam allowances toward long sashes. Make 2 like this.
5. Join the rows in the order shown. Press the seam allowances in one direction.
6. Matching centers, sew a red border strip to a yellow stripe border. Make 4 pieced borders like this. Sew a pieced border to each side of the quilt, starting and stopping stitches  $\frac{1}{4}$ " from the quilt's edges. Miter the corners, trim the excess seam allowance, and press seam open.

## Finishing the Quilt

7. Layer quilt with batting and backing. Quilt in the ditch around borders and block patches. Quilt around the printed motifs in the block centers and outer border. Bind to finish the quilt.



Quilt Diagram

1384 Broadway  
 New York, NY 10018  
 (800) 223-5678  
 www.andoverfabrics.com

# Winterthur Hearthstone

by Kathy Hall

for Winterthur Museum and Country Estates



makower uk®



4087-R\*



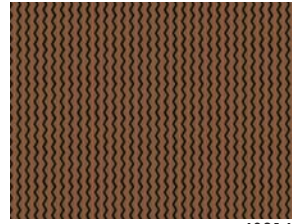
4088-N



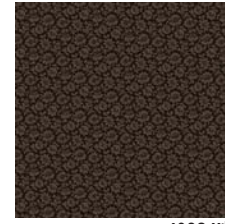
4089-K\*



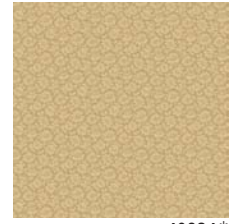
4090-K\*



4091-N



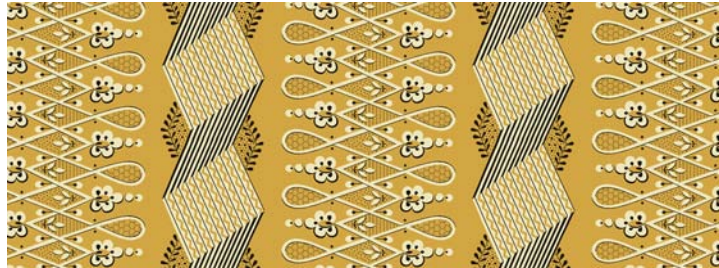
4092-K\*



4092-L\*



4087-G



4088-Y\*



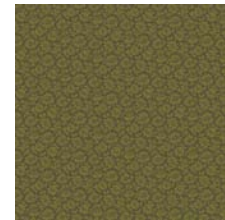
4089-G



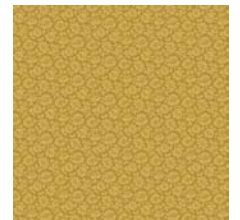
4090-G



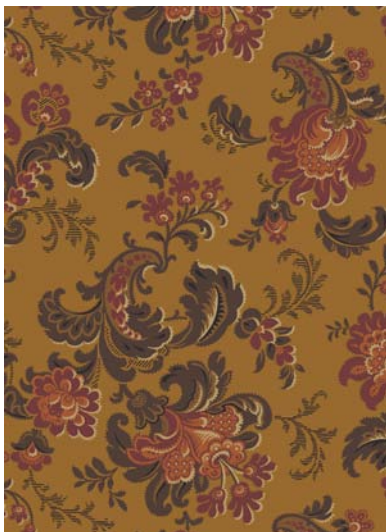
4091-Y\*



4092-G



4092-Y



4087-Y



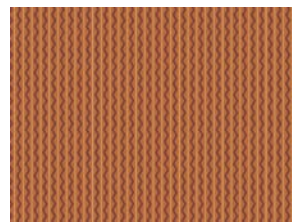
4088-O



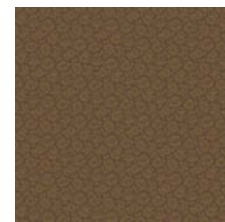
4089-N



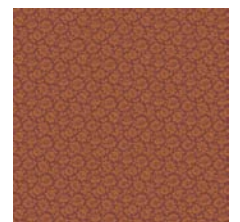
4090-N



4091-O



4092-N



4092-R

\*Indicates fabric used in quilt pattern. Fabrics shown are 20% of actual size.