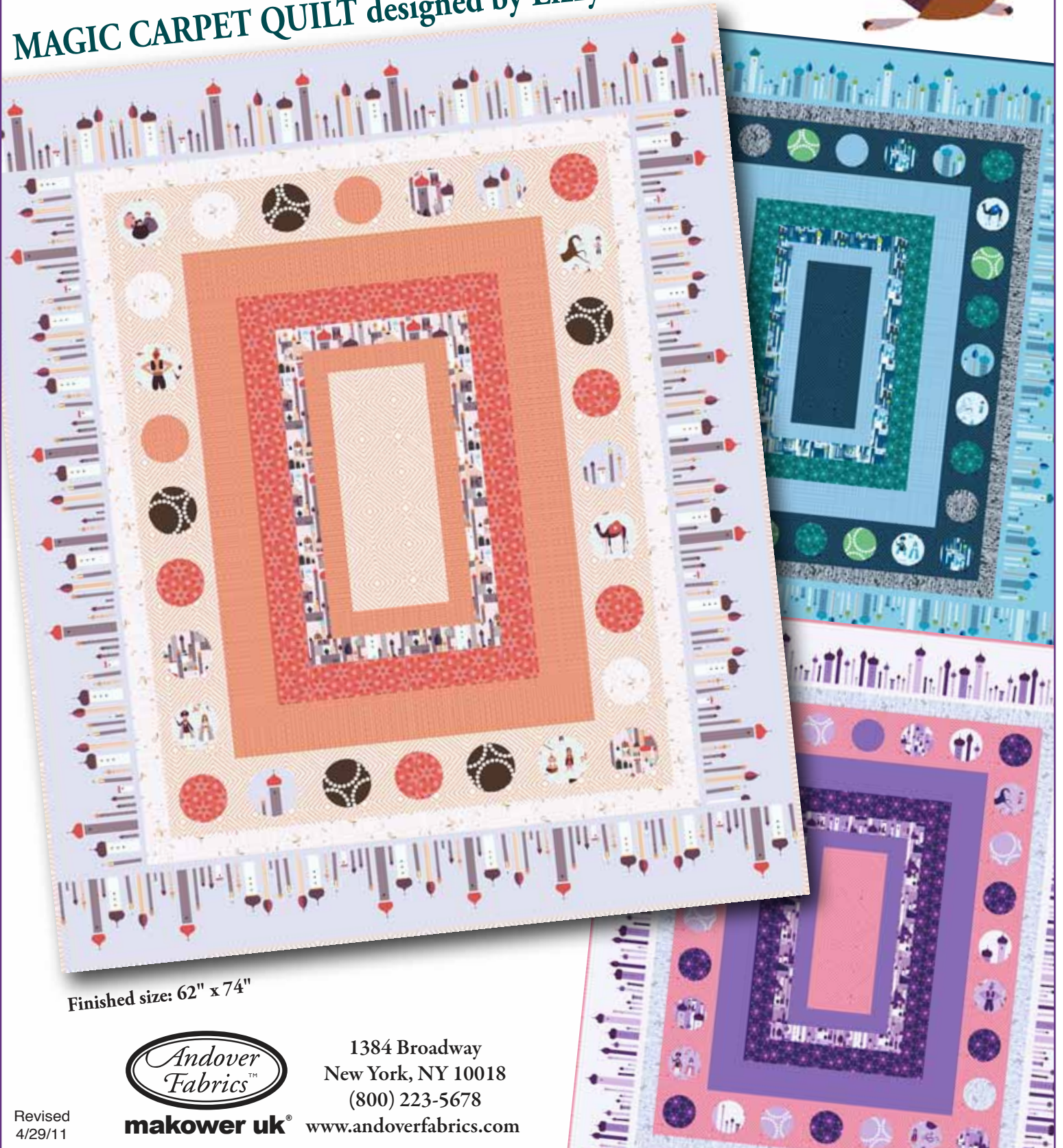


# 1001 Peeps Collection

Fabrics by Lizzy House



MAGIC CARPET QUILT designed by Lizzy House



Finished size: 62" x 74"



**makower uk**

1384 Broadway  
New York, NY 10018  
(800) 223-5678

[www.andoverfabrics.com](http://www.andoverfabrics.com)

Revised  
4/29/11

# Magic Carpet Quilt

Introducing Andover Fabrics new collection: 1001 Peeps by Lizzy House  
Quilt designed by Lizzy House

Take a magic-carpet ride with 1001 peeps and this simple-to-make medallion-style quilt. Sewing border after border will take you to an exotic landscape of minaret-topped towers and dreams of Arabian nights and Turkish delights.

Quilt finishes: 62" x 74"  
28 appliquéd blocks: 6" x 6"

## Fabric Requirements

		Yardage	Blue	Brown	Purple
Fabric A	appliqué	¼ yards	5469-T	5469-LN	5469-P
Fabric B	appliqué, borders	¾ yard	5470-T	5470-O	5470-P
Fabric C	borders	1¾ yards	5471-T	5471-LN	5471-P
Fabric D	appliqué, borders	⅔ yard	5473-T	5473-O	5473-P
Fabric E	appliqué, borders	⅝ yard	5474-B	5474-E	5474-LB
Fabric F	appliqué, borders	1¼ yards	5475-T	5475-O	5475-P
Fabric G	center, borders	1⅛ yards	5482-T	5482-O	5482-P
Fabric H	appliqué	¼ yard	4116-V	4116-N	4116-P
Backing		4½ yards	5469-T	5469-LN	5469-P

## Cutting Directions

**Note:** WOF designates the width of fabric from selvedge to selvedge (approximately 42" wide).  
Refer to the Quilt Diagram for all steps.

**Fabric A** Cut (6) 4"-diameter circles as per instructions

**Fabric B** Cut (1) strip 24½" x WOF; crosscut strip into (2) 2½" x 24½" vertical strips  
From remainder of 24½" piece above, cut (2) 2½" x 16½" horizontal strips  
Cut (3) 4"-diameter circles as per instructions

**Fabric C** Fussy-cut (2) identical strips 8½" x 58½" along length of fabric  
Fussy-cut (2) identical strips 8½" x 62½" along length of fabric  
Cut (3) 4"-diameter circles as per instructions

**Fabric D** Cut (4) strips 3½" x WOF; trim strips to make (2) strips each 22½" and 28½"  
Cut (6) 4"-diameter circles as per instructions

**Fabric E** Cut (6) strips 2½" x WOF; sew together end-to-end then cut (2) 2½" x 54½" side borders  
and (2) top/bottom borders 2½" x 46½"  
From remainder cut (3) 4"-diameter circles as per instructions

**Fabric F** Cut (4) strips 4½" x WOF; crosscut strips into (2) strips each 30½" and 34½"  
Cut (2) strips 2½" x WOF; crosscut strips into (2) strips each 12½" and 20½"  
Cut (2) 4"-diameter circles as per instructions  
Cut (8) strips 2½" x WOF for binding

**Fabric G** Cut (1) strip 20½" x WOF; crosscut strip into one 8½" x 20½" rectangle and (15) 6½" squares  
Cut (2) strips 6½" x WOF; crosscut strips into (13) 6½" squares to total (28) fabric G squares

**Fabric H** Cut (5) 4"-diameter circles as per instructions

**Backing** Cut (2) panels 42" x 82" and piece to fit quilt top with 4" overlap on all sides

# Magic Carpet Quilt

## Making the Circle Blocks

*Note:* Refer to Diagrams 1 and 2 to complete the Circle blocks.

1. Trace (28) 4"-diameter circles onto the paper side of fusible web, leaving  $\frac{1}{4}$ " between pieces; cut out shapes, leaving a margin around each one.
2. Fuse the circle shapes to the wrong sides of fabric as follows: (6) fabric A; (3) fabric B; (3) fabric C; (6) fabric D; (3) fabric E; (2) fabric F; and (5) fabric H. Cut out circles on traced lines. Fold each circle in quarters and crease to mark centers referring to Diagram 1; remove paper backing.
3. Fold each  $6\frac{1}{2}$ " fabric G square in half vertically and horizontally; crease to mark centers referring to Diagram 1.
4. Center and fuse a 4"-diameter circle to each creased fabric G square referring to Diagram 2.
5. Using thread to match or contrast fabrics, edge-stitch each circle in place using a narrow zigzag or blanket stitch, if desired. *Note:* You may eliminate this stitching and secure pieces during the quilting process, if desired.

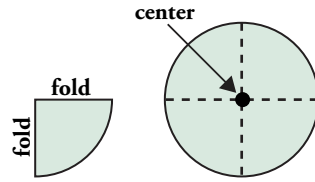


Diagram 1

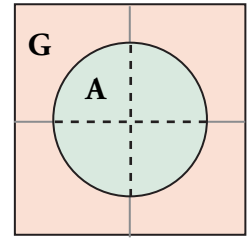


Diagram 2

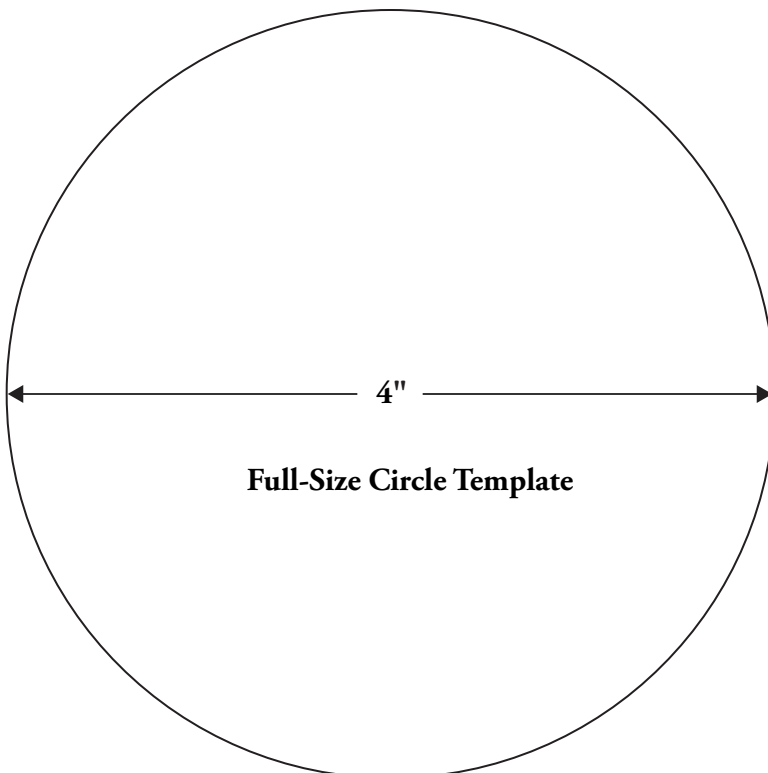
## Quilt Top Assembly

*Note:* Refer to the Quilt Diagram for all steps.

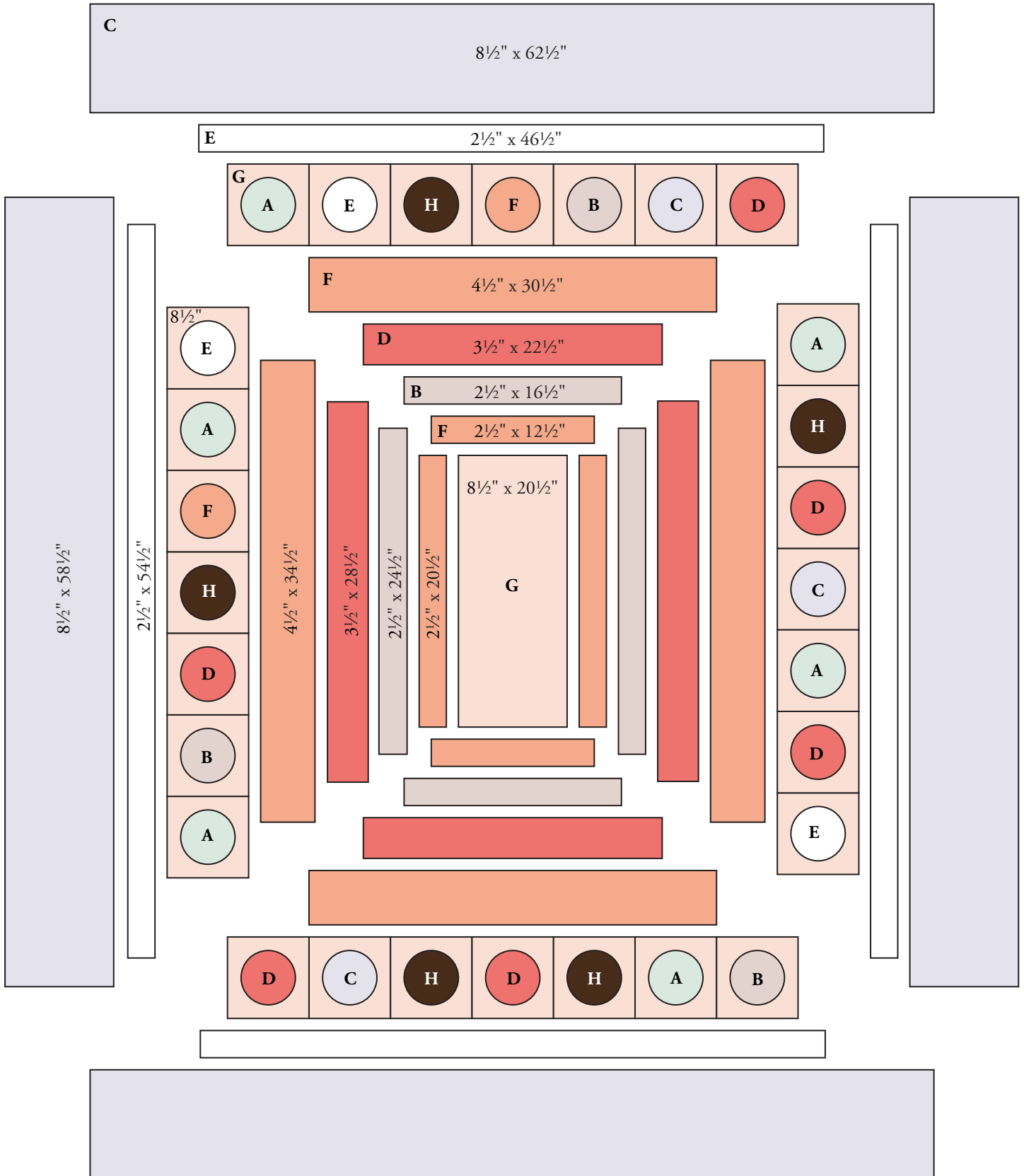
6. Sew a  $20\frac{1}{2}$ " fabric F strip to opposite long sides and the  $12\frac{1}{2}$ " fabric F strips to the top and bottom of the  $8\frac{1}{2}$ " x  $20\frac{1}{2}$ " fabric G rectangle; press seams toward the fabric F strips.
7. Repeat step 6 with the  $24\frac{1}{2}$ " and  $16\frac{1}{2}$ " fabric B strips, then the  $28\frac{1}{2}$ " and  $22\frac{1}{2}$ " fabric D strips, and finally the  $34\frac{1}{2}$ " and  $30\frac{1}{2}$ " fabric F strips.
8. Select and join seven Circle blocks in the order shown in the Quilt Diagram to make a side row. Press seams in one direction. Repeat to make a second side row and the top and bottom rows, again referring to the Quilt Diagram for positioning of the Circle blocks.
9. Sew a side row to opposite long sides of the pieced center; press seams toward fabric F strips. Add the top and bottom rows to the pieced center; press seams toward fabric F strips.
10. Join the  $2\frac{1}{2}$ "-wide fabric E strips on the short ends to make one long strip; press seams open. Crosscut strip into two  $46\frac{1}{2}$ " and two  $54\frac{1}{2}$ " strips. Sew the  $54\frac{1}{2}$ " fabric E strips to opposite long sides and a  $46\frac{1}{2}$ " fabric E strip to the top and bottom of the pieced center; press seams toward fabric E strips.
11. Sew the  $58\frac{1}{2}$ " fabric C strips to opposite long sides and the  $62\frac{1}{2}$ " fabric C strips to the top and bottom of the pieced center to complete the quilt top; press seams toward fabric C strips.

## Finishing the Quilt

12. Layer quilt top with batting and backing. Quilt in the ditch of seams and as desired. Bind to finish the quilt.



# Magic Carpet Quilt



**Quilt Diagram**

# 1001 Peeps

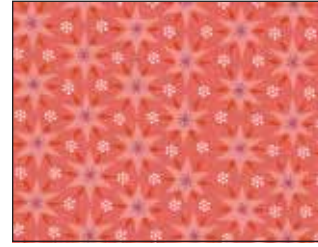
by Lizzy House



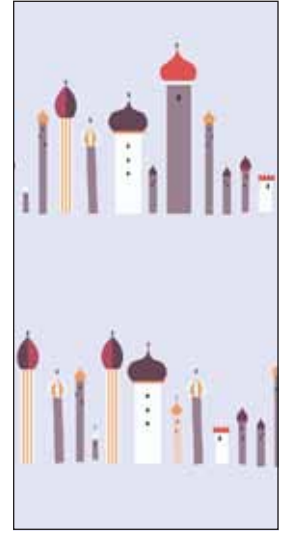
5469-LN\*



5470-0\*



5473-0\*



5471-LN\*



5474-E\*



5475-0\*



5482-0\*



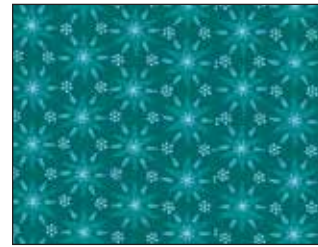
4116-N\*



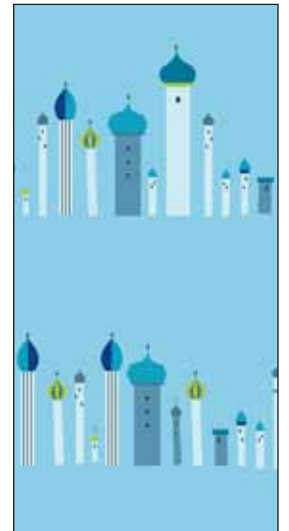
5469-T



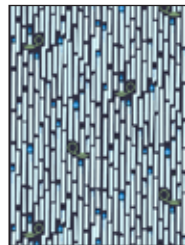
5470-T



5473-T



5471-T



5474-B



5475-T



5482-T



4116-V



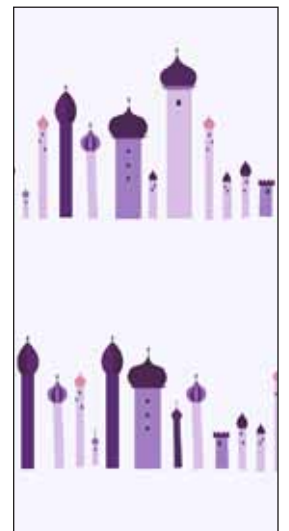
5469-P



5470-P



5473-P



5471-P



5474-LB



5475-P



5482-P



4116-P