

# Agatha's Garden

KATHY HALL



Afternoon Tea Quilt  
designed by  
**Janet Houts**

Quilt Size: 74" x 74"

[andoverfabrics.com](http://andoverfabrics.com)

## About Agatha's Garden

Text here. – Designer name

andover



[makower.uk](http://makower.uk)

Free Pattern Download Available

1384 Broadway New York, NY 10018  
Tel. (800) 223-5678 • [andoverfabrics.com](http://andoverfabrics.com)



# Afternoon Tea Quilt

Introducing Andover Fabrics new collection:  
**AGATHA'S GARDEN** by Kathy Hall  
 Quilt designed by Janet Houts

Quilt finishes 74" x 74"

81 Block Y: 5" x 5"

64 Block Z: 5" x 5"

*Striking floral prints combine with subtle tone-on-tone fabrics in this traditional queen-bed topper. Fussy-cutting the floral prints lends an elegant and formal air to the design.*

## Cutting Directions

**Note:** Read assembly directions before cutting patches. All measurements are cut sizes and include 1/4" seam allowances. A fat 1/4 is an 18" x 20"-22" cut. The mitered border includes extra length for insurance. WOF designates the width of fabric from selvedge to selvedge (approximately 42" wide).

**Fabric A** Fussy-cut (4) borders 5 1/2" x 88", cut lengthwise (read Step 1 before cutting)

**Fabric B** Cut (256) rectangles 1 1/2" x 3 1/2"  
 Cut (324) squares 1 1/2" x 1 1/2"

**Fabric C** Cut (8) strips 2 1/2" x WOF for binding  
 Cut (32) rectangles 1 1/2" x 3 1/2"

**Fabric D** Cut (8) squares 8 1/2" x 8 1/2", cut in half diagonally twice to make 32 quarter-square triangles  
 Cut (2) squares 4 1/2" x 4 1/2"  
 (read Step 2 before cutting)

**Fabric E** Cut (32) rectangles 1 1/2" x 3 1/2"

**Fabric F** Cut (36) rectangles 1 1/2" x 3 1/2"  
 Cut (32) squares 1 1/2" x 1 1/2"

**2 Darks** From each: Cut (32) squares 3 1/2" x 3 1/2"  
 (64 total)

**2 Lights** From one: Cut (40) squares 3 1/2" x 3 1/2"  
 From one: Cut (41) squares 3 1/2" x 3 1/2"

**7 Prints** From each:  
 Cut (32) rectangles 1 1/2" x 3 1/2"  
 Cut (32) squares 1 1/2" x 1 1/2"

**Backing** Cut (2) panels 41" x 82", pieced to fit quilt top with overlap on all sides

## Fabric Requirements

		Yardage	Fabric
<b>Fabric A</b>	blocks	2 1/2 yards	*9316-R
<b>Fabric B</b>	blocks	1 3/4 yards	9314-RL
<b>Fabric C</b>	blocks, binding	3/4 yard	9321-BN
<b>Fabric D</b>	setting	5/8 yard	9321-RN
<b>Fabric E</b>	blocks	fat 1/4 yard	9319-BN
<b>Fabric F</b>	blocks	fat 1/4 yard	9320-B
<b>2 Darks</b>	block centers	3/4 yard each	9318-B 9318-R
<b>2 Lights</b>	block centers	1 yard each	9318-BL 9318-RL
<b>7 Prints</b>	blocks	fat 1/4 yard each	9314-R 9319-B 9319-RN 9320-R 9320-RN 9321-RE 9322-B
<b>Backing</b>		4 3/4 yards	**9317-RL

\*Use 9316-B for the alternate quilt border.

\*\*Use 9317-BL for the alternate quilt backing.

## Making the Quilt

1. Fussy-cut the 4 Fabric A borders, centering the floral bouquets. If you cut the strips from the same part of the stripe, the corners will come together nicely. Fussy-cut the 3 1/2" squares from the 4 light and dark prints, centering the motifs in the squares. Be careful not to cut into the surrounding fabric.

2. Referring to Diagram 1, cut one Fabric D 4 1/2" square in half diagonally, and cut the second square in mirror image as shown.

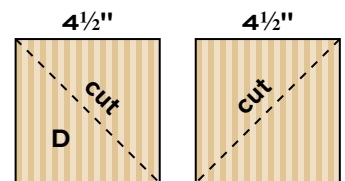


Diagram 1

- This allows the stripe to remain vertical in the 4 corners of the quilt. Cut each 8 1/2" square diagonally into 4 triangles (Diagram 2).

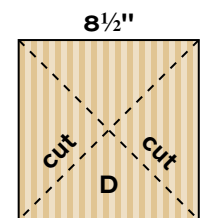
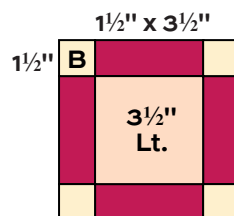
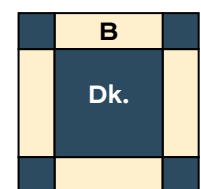


Diagram 2

3. Sew colored rectangles to the light 3 1/2" squares as shown in the Block Y diagram. Join Fabric B 1 1/2" squares to ends of colored rectangles as shown. Join the parts to make 81 Block Y. Likewise, make 64 Block Z using Fabric B rectangles, dark 3 1/2" centers, and colored 1 1/2" squares.



Block Y- Make 81



Block Z- Make 64

# Afternoon Tea Quilt

- Referring to the Quilt Diagram, arrange the Block Y and Block Z in diagonal rows, noting that each row begins and ends with a Block Y. Position the Fabric D quarter-square triangles at the ends of the diagonal rows. Be sure that the Fabric D striped print remains vertical in each patch. Position the Fabric D half-square triangles in each corner, again noting orientation of the stripe. Once you are satisfied with the design, join the blocks and patches into rows, and then join the rows.
- To “audition” the Fabric A borders, lay the border strips along the sides of the quilt, centering a floral bouquet with the center of each side. Turn under the ends of the border strips at a

45-degree angle and note how the prints meet at the corners. Shift the borders until you are satisfied with the corner motifs. Sew the borders to the quilt, starting and stopping stitching  $\frac{1}{4}$ " from the quilt's raw edge. Miter the corners and trim the excess.

## Finishing the Quilt

- Layer the quilt with batting and backing and baste. Quilt in the ditch around the border and block patches. Quilt around the printed motifs in the block centers and border. Bind to finish the quilt.



Quilt Diagram



# Agatha's Garden KATHY HALL



9316-B



9316-R\*



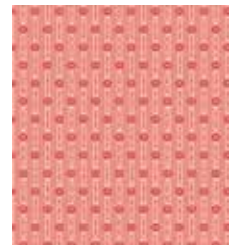
9319-B\*



9321-BN\*



9319-BN\*



9321-RE



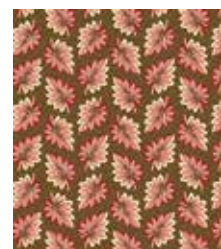
9318-B\*



9318-BL\*



9317-BL



9319-RN\*



9321-RN\*



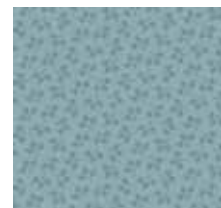
9318-R\*



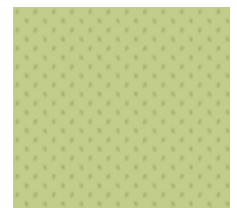
9318-RL\*



9317-RL\*



9322-B\*



9314-BG



9320-B\*



9320-BG



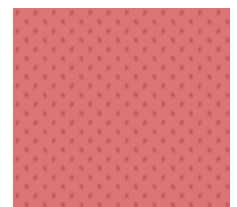
9320-R\*



9320-RN\*



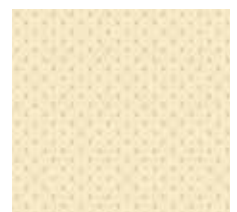
9322-BG



9314-R\*



9322-RE\*



9314-RL\*

\*Indicates fabrics used in featured quilt pattern. Fabrics shown are 25% of actual size.

andover

•  
•  
• makower uk  
•

Free Pattern Download Available

1384 Broadway New York, NY 10018  
Tel. (800) 223-5678 • [andoverfabrics.com](http://andoverfabrics.com)  
9/15/19