

Anne's English Scrapbox

DI FORD-HALL

a
100
years



On the Terrace Quilt designed by: **Janet Houts** • Quilt Size: 84" x 93"

Skill Level: **Advanced Beginner** • andoverfabrics.com

andover

•
•
• makower.uk
•

Free Pattern Download Available

1384 Broadway New York, NY 10018
Tel. (800) 223-5678 • andoverfabrics.com

On the Terrace Quilt

Introducing Andover Fabrics new collection: Anne's English Scrapbox by Di Ford-Hall

Quilt designed by Janet Houts



Quilt finishes 84" x 93"

28 Block Y: 9" x 9"

28 Block Z: 9" x 9"

You'll feel like you have been transported to a charming English garden when making this lovely queen-size quilt. The various floral, geometric, and striped prints blend nicely in this muted palette. Simple blocks make this easy enough for an experienced beginner.

Cutting Directions

Note: Read assembly directions before cutting patches. All measurements are cut sizes and include 1/4" seam allowances. A fat 1/8 is a 9" x 20"-22" cut of fabric. A fat 1/4 is an 18" x 20"-22" cut. Borders are cut the exact lengths required plus 1/4" seam allowances. WOF designates the width of fabric from selvedge to selvedge (approximately 42" wide).

Fabric A Fussy-cut (4) squares 9 1/2"

Fabric B Fussy-cut (2) side borders 9 1/2" x 75 1/2" cut lengthwise
Fussy-cut (2) top/bottom borders 9 1/2" x 66 1/2"

Fabric C Cut (224) squares 3 1/2"

Fabric D Cut (8) strips 2" x WOF, pieced to make the following:
(2) side borders 2" x 72 1/2"
(2) t/b borders 2" x 66 1/2"
Cut (4) squares 4" (3 7/8"), cut in half diagonally to make half-square triangles (Read Step 1 before cutting.)
Cut (2) squares 3 1/2"

Fabric E Cut (9) strips 2 1/2" x WOF for binding
Cut (4) squares 4" (3 7/8"), cut in half diagonally to make 8 half-square triangles
Cut (2) squares 3 1/2"

Fabric F Cut (56) squares 4" (3 7/8"), cut in half diagonally to make 112 half-square triangles
Cut (28) squares 3 1/2"

7 Lt. From each:
Cut (16) squares 3 1/2"

12 Med. From each:
Cut (4) squares 4" (3 7/8"), cut in half diagonally to make 8 half-square triangles
Cut (2) squares 3 1/2"

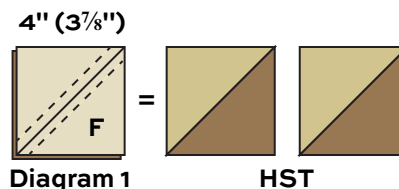
Backing Cut (2) panels 34" x 92", pieced to fit quilt top with overlap on all sides

Fabric Requirements

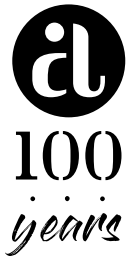
		Yardage	Fabric
Fabric A	blocks	1 yard	9520-N
Fabric B	border	2 1/4 yards	9525-R
Fabric C	blocks	2 1/4 yards	9529-LR
Fabric D	border, blocks	3/4 yard	9529-N
Fabric E	blocks, binding	1 yard	9529-T
Fabric F	blocks	1 1/4 yards	9531-N
7 Lt.	blocks	fat 1/4 yard each	
	9523-R	9523-T	9525-N
	9527-R	9528-T	9530-N
12 Med.	blocks	fat 1/8 yard each	
	9522-R	9522-T	9524-NR
	9524-R	9524-T	9528-N
	9528-TR	9529-R	9530-Y
			9525-T
			9528-R
			9531-Y
Backing		7 3/4 yards	9529-LT

Making the Quilt

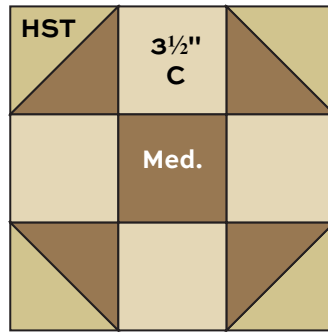
1. The Y blocks use half-square triangles (HST) that finish 3" square. Use your favorite method to make HST, or follow these directions. Cut squares 4" for HST that will be trimmed after stitching. If you prefer not to trim, cut squares 3 7/8". Draw a diagonal line on the wrong side of each Fabric F 4" (3 7/8") square (Diagram 1). Place a marked square on a medium square, right sides together. Sew 1/4" seam on each side of the marked line; cut apart on the marked line. Press open to make pieced HST. Trim to 3 1/2" square if needed. Make HST using the Fabric D and Fabric E 4" (3 7/8") squares. Make 8 HST of each colorway.



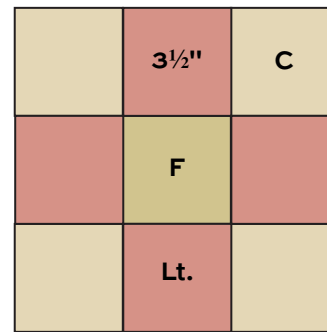
On the Terrace Quilt



- Referring to the Block Y diagram, arrange patches as shown. Join the patches to make 3 rows, and then join the rows. Make 28 Block Y.
- Referring to the Block Z diagram, arrange $3\frac{1}{2}$ " squares as shown. Join to make 3 rows, and then join the rows. Make 28 Block Z.
- The blocks are arranged alternately into 8 rows of 7 blocks each. Position the blocks as you wish, or follow the Quilt Diagram. Once you are satisfied with the placement, join the blocks into rows, and then join the rows.

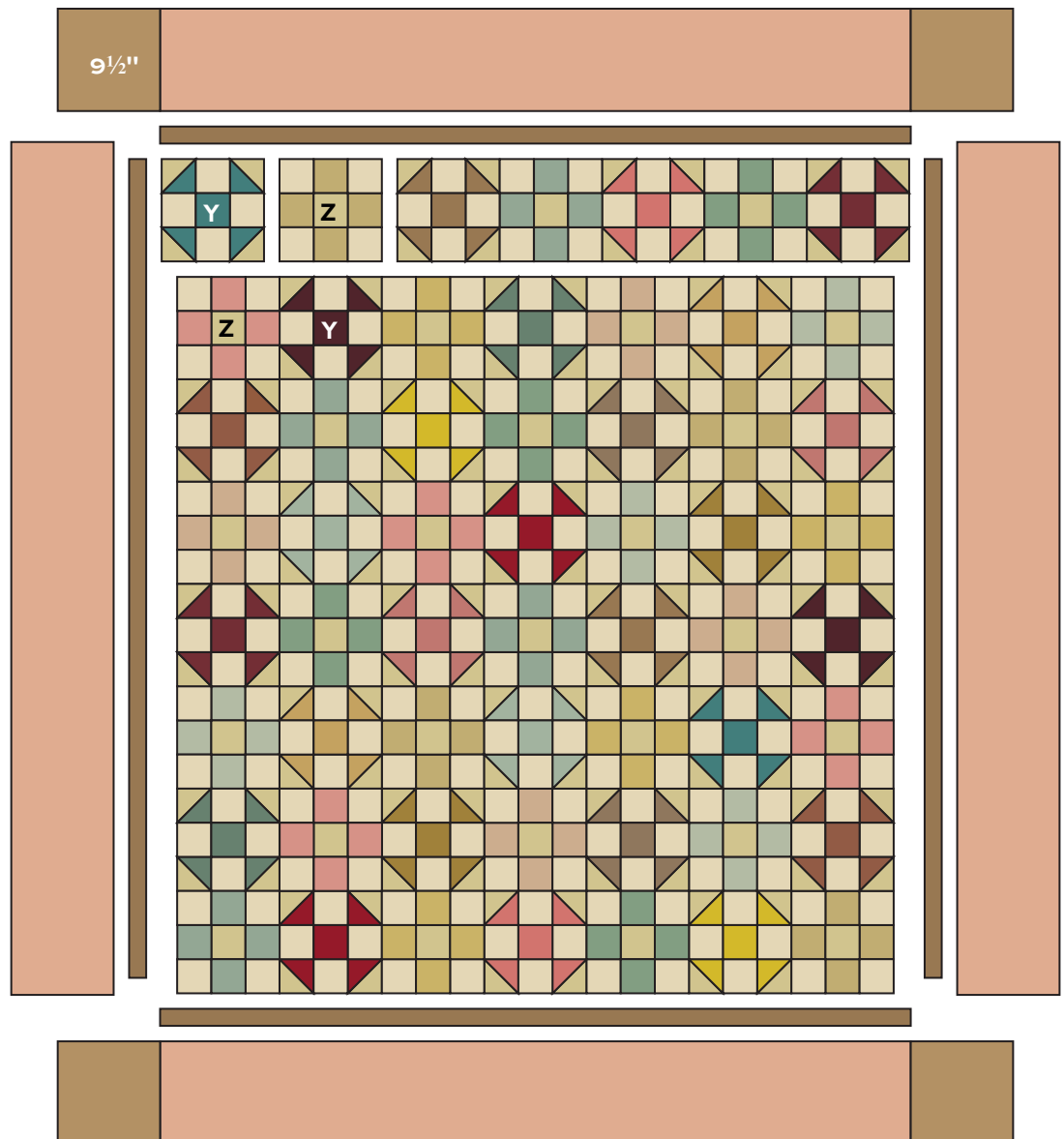


Block Y – Make 28



Block Z – Make 28

- Sew long Fabric D borders to the sides, and shorter borders to the top and bottom.
- Sew long Fabric B borders to the sides of the quilt. Join Fabric A squares to ends of the shorter Fabric B borders. Sew to the top and bottom.



Quilt Diagram

Finishing the Quilt

- Layer the quilt with batting and backing and baste. Quilt in the ditch around borders and block patches. Quilt around the printed motifs in the outer border. Bind to finish the quilt.

Anne's English Scrapbox

DI FORD-HALL

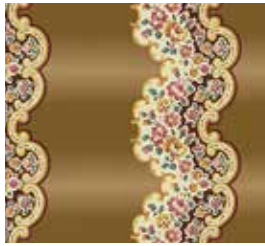
a
100
years



9520-N*



9520-R



9521-N



9521-R



9521-T



9523-N



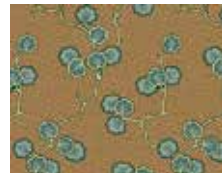
9523-R*



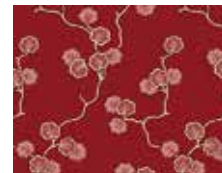
9523-T*



9524-NR*



9524-NT*



9524-R*



9524-T*



9522-R*



9522-T*



9525-N*



9525-R*



9525-T*



9525-V



9526-L



9526-R



9528-N*



9528-R*



9528-T*



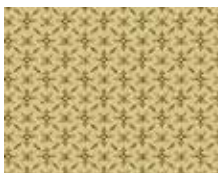
9528-TR*



9527-N



9527-R*



9530-N*



9530-Y*



9531-N*



9531-Y*



9529-LR*



9529-LT*



9529-N*



9529-R*



9529-T*

All fabrics are used in quilt pattern. Fabrics shown are 20% of actual size.

andover : makower uk

Free Pattern Download Available

1384 Broadway New York, NY 10018
Tel. (800) 223-5678 • andoverfabrics.com