

Asbury

FABRICS BY THOMAS KNAUER



Here Quilt designed and made by: **Thomas Knauer**

Quilt Size: **61½" x 61½"**

andoverfabrics.com



About Asbury Here Quilt

"You Are Here signs do more than just pinpoint a specific location within a mall or amusement park, they seem to imply that I really do exist. Right here and right now I am simply here, and nothing more.

I think of this quilt as a meditation blanket, to single out one possible Here from any number of possible Heres. The Here quilt does not occupy the central position; it offers a metaphor for leaving the center stage for a moment of rest." – Thomas Knauer

andover



makower uk
The Henley Studio

Free Pattern Download Available

1384 Broadway New York, NY 10018
Tel. (800) 223-5678 • andoverfabrics.com

Here Quilt



Introducing Andover Fabrics new collection: **Asbury** by Thomas Knauer

Quilt designed and made by Thomas Knauer

Quilt finishes 61½" x 61½"

Squares are all you need to make this graphic and fun quilt! Keep the purple/blue fabrics together, and the red/orange prints together, and then divide the parts with a white "X" sash. It couldn't be easier. Thomas has designed a series of quilts based on traffic signs, and "Here" is one of his latest.

Fabric Requirements

	Yardage	Fabric	
Fabric A squares, binding	¾ yard	5820-R	
Fabric B sashes, border	2 yards	A- S-L	
Fat ¼ yard prints			
5820-P	5820-PG	5820-RB	5845-P
5845-R	5846-P	5846-R	5848-P
5848-PT	5848-R	5848-RE	5849-P
5849-R	5850-P	5850-R	5851-P
5851-PY	5851-RG	5851-R	5852-P
5852-R			
Backing	4 yards	5844-R	

Cutting Directions

Note: Read assembly directions before cutting patches. All measurements are cut sizes and include ¼" seam allowances. A fat ¼ is an 18" x 20"-22" cut. Borders and sashes include extra length for insurance and will be trimmed. WOF designates the width of fabric from selvedge to selvedge (approximately 42" wide).

Fabric A Cut (7) strips 2½" x WOF for binding
Cut (6) squares 4½" x 4½"

Fabric B Cut (2) borders 6½" x 64", cut lengthwise
Cut (2) borders 6½" x 52", cut lengthwise
Cut (1) sash strip 3½" x 72"
(to be trimmed, see Step 5)
Cut (2) sash strips 3½" x 36"

Fat ¼'s Cut (6) squares 4½" x 4½" from each

Backing Cut (2) panels 36" x 70", pieced to fit quilt top with overlap on all sides

Making and Assembling the Quilt

1. Referring to Diagram 1, arrange the red and orange fabrics (designated with "R" at the end of each fabric number) into 8 rows of 8 squares each. There will be 2 leftover squares that won't be needed. Note that there are a green print (RG) and an aqua print (RB) in this colorway. Join the squares into rows. Press seam allowances in opposite directions in alternating rows. Join the rows.

Arrange the purple and blue fabrics (designated with "P" at the end of each fabric number) into 8 rows of 8 squares each. This colorway includes an aqua print (PT), a yellow print (PY), and a green print (PG). Join the squares, and then join the rows as before.

2. Align a long acrylic ruler with the diagonal center of the large pieced red square (Diagram 1). Cut through the exact points where squares meet. You are cutting the square in half diagonally. Repeat with the blue squares.

Here Quilt

- Referring to Diagram 2, lay out the 4 pieced units with their long edges to the outside so that the 2 colorways alternate as shown. Handle them carefully since the outside edges are on the bias.

Pin a short white sash between a blue and a red pieced unit (Diagram 2), with the end of the sash even with the square corners. Be careful not to stretch the quilt's edges, and check to be sure that the seams of the blue squares align with the seams of the red squares. The sash will stick out at the outer corner. Sew the pieced units to the sash. A walking foot or even-feed foot will help keep the quilt from stretching. Repeat this step with the remaining 2 pieced units and short sash.

- Matching the centers, pin the long white sash between the 2 halves. Take the time to pin carefully, checking that the seams of the squares align on opposite sides of the sash. Sew the sash to each half.
- Position a large square acrylic ruler even with the outer edges of the red and purple patches. Trim the ends of the white sashes to make a square corner. Repeat on all corners.
- Carefully pin a shorter white border to a side. Be careful not to stretch the bias edges of the quilt. Using a walking foot or even-feed foot, sew the border to the side. The corners of the squares will be caught in the seam, but that's okay. Repeat for the other side. Trim even with the quilt's edges. Pin and sew the longer border to the top and bottom and trim.

Finishing the Quilt

- Layer the quilt with batting and backing and baste. Quilt in the ditch around the squares and along the sashes and border. Quilt the outer border and sashes with an overall design of your choice. Quilt around the printed motifs inside the squares if you wish.
- Bind to finish the quilt.

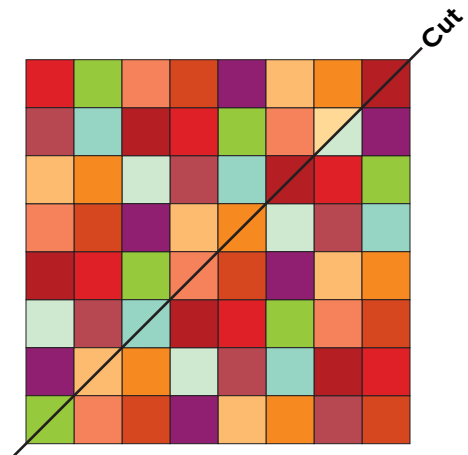


Diagram 1

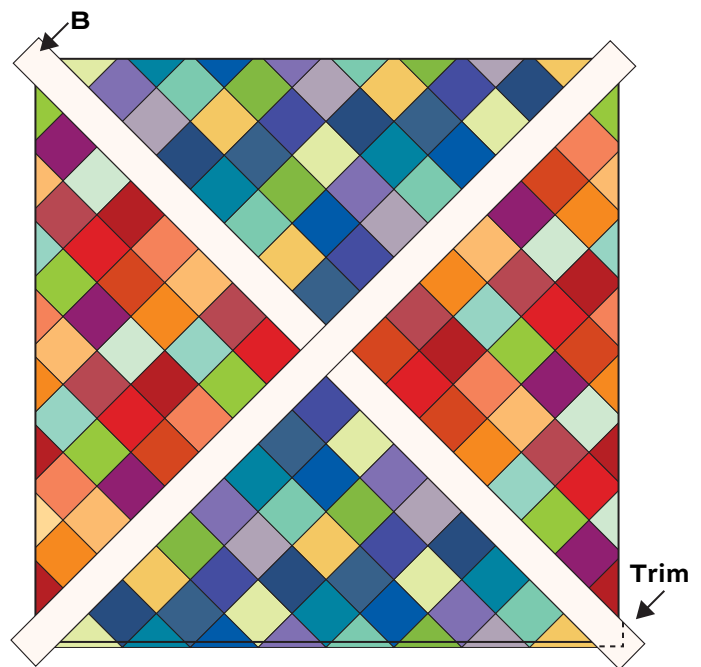


Diagram 2

Asbury

FABRICS BY Thomas Knauer



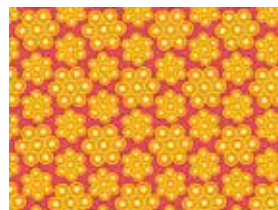
5844-R*



5848-R*



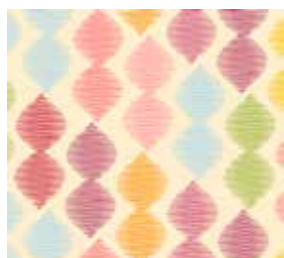
5848-RE*



5849-R*



5850-R*



5845-R*



5846-R*



5847-R



5851-R*



5820-R*



5852-R*



5851-RG*



5820-RB*



Andover Solid
A-S-L White*



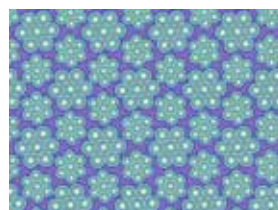
5844-P



5848-P*



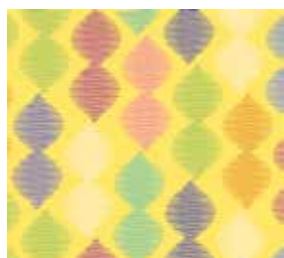
5848-PT*



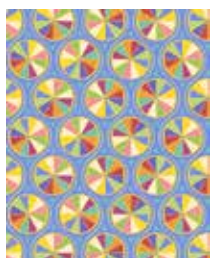
5849-P*



5850-P*



5845-P*



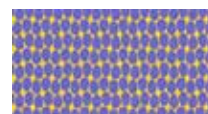
5846-P*



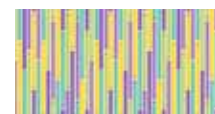
5847-P



5851-P*



5820-P*



5852-P*



5851-PY*



5820-PG*

*Indicates fabrics used in quilt pattern.
Fabrics shown are 10% of actual size.

andover

makower uk
The Henley Studio

Free Pattern Download Available

1384 Broadway New York, NY 10018
Tel. (800) 223-5678 • andoverfabrics.com