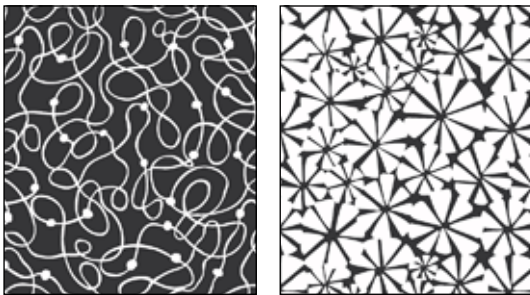
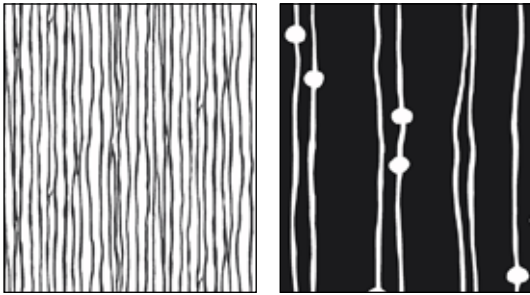


B & W

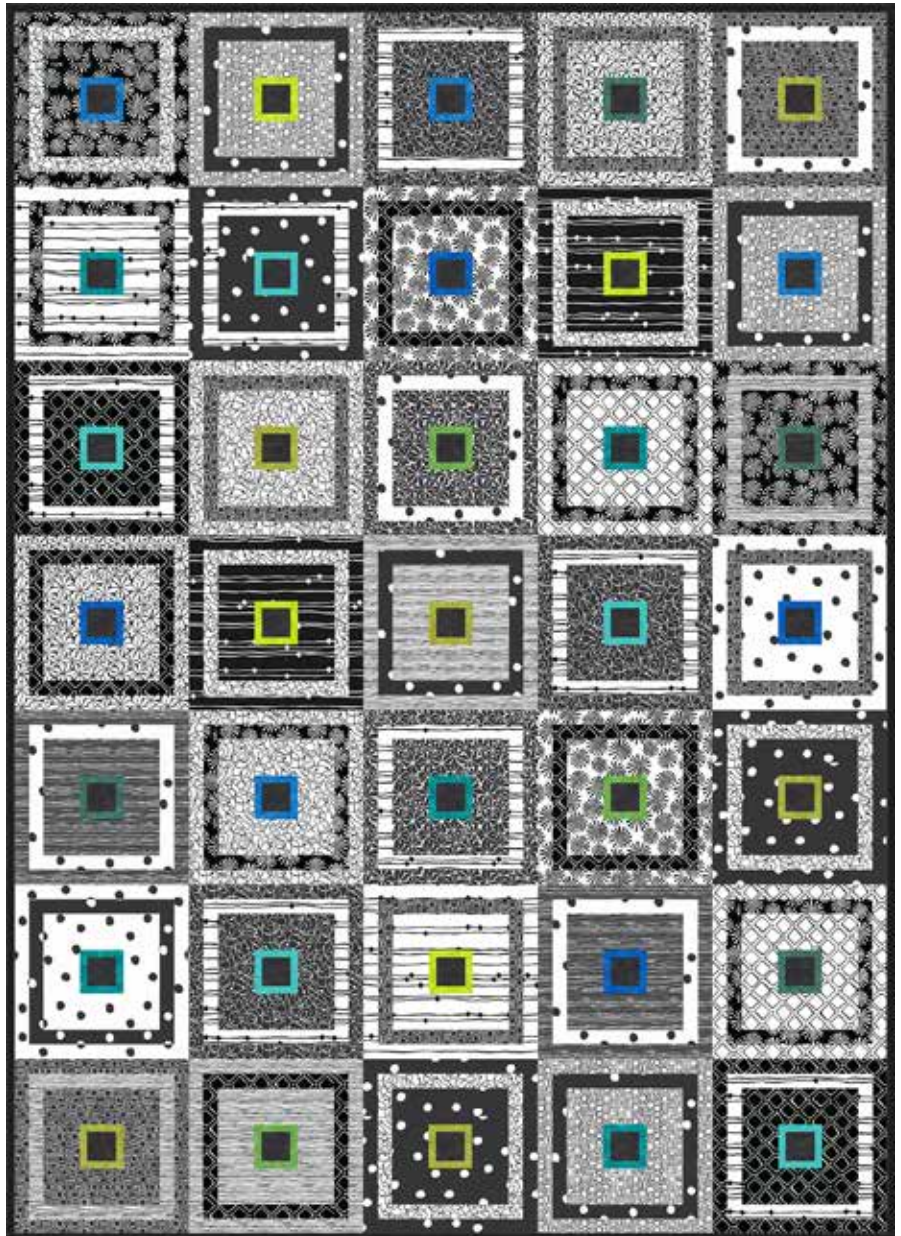
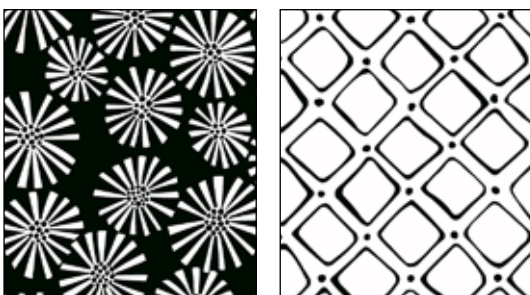
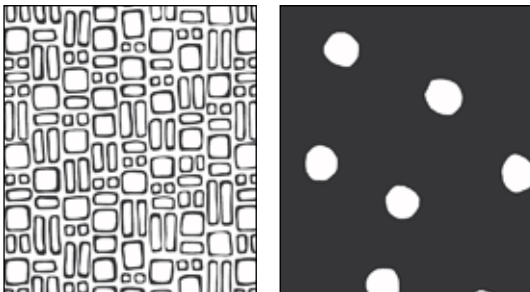
BY KIM SCHAEFER



Quilt designed by: **Kim Schaefer**

Quilt Size: **60" x 84"**

andoverfabrics.com



About B & W

Black and white is a classic combination with timeless appeal. I hope these contemporary prints will be a source of creativity and inspiration for some beautiful quilts for family and friends to enjoy. — *Kim Schaefer*

andover

•
•
• **makower uk**
• *The Henley Studio*
•

Free Pattern Download Available

1384 Broadway New York, NY 10018
Tel. (800) 223-5678 • andoverfabrics.com

B & W Quilt



Introducing Andover Fabrics new collection: **B & W** by Kim Schaefer

Quilt designed by Kim Schaefer

Quilt finishes 60" x 84"

18 Block Y: 12" x 12"

17 Block Z: 12" x 12"

*What's black and white and sophisticated all over?
It's this fun positive/negative quilt that's just the
right size to hang on a wall or snuggle under. The
touches of aqua, blue, and lime add a surprising
element to the mostly-monochromatic quilt.*

Cutting Directions

Note: Read assembly directions before cutting patches. All measurements are cut sizes and include 1/4" seam allowances. A fat 1/8 is a 9" x 20"-22" cut of fabric. WOF designates the width of fabric from selvedge to selvedge (approximately 42" wide).

The light and dark fabrics are positioned differently in Blocks Y and Blocks Z. Refer to this chart to cut the strips needed.

Set 1: Cut (2) strips 1 1/2" x 12 1/2"
Cut (2) strips 1 1/2" x 10 1/2"
Cut (2) rectangles 3" x 8 1/2"
Cut (2) rectangles 3" x 3 1/2"

Set 2: Cut (2) strips 1 1/2" x 10 1/2"
Cut (2) strips 1 1/2" x 8 1/2"

Cutting for ONE Block Y:

Dark fabric Cut (1) Set 1 patches
Light fabric Cut (1) Set 2 patches
Bright Cut (2) rectangles 1" x 3 1/2"
Cut (2) rectangles 1" x 2 1/2"
Fabric Q Cut (1) square 2 1/2" x 2 1/2"

Cutting for ONE Block Z:

Light fabric Cut (1) Set 1 patches
Dark fabric Cut (1) Set 2 patches
Bright Cut (2) rectangles 1" x 3 1/2"
Cut (2) rectangles 1" x 2 1/2"
Fabric Q Cut (1) square 2 1/2" x 2 1/2"

Fabric Requirements

		Yardage	Fabric
Fabric A	blocks	3/8 yard	8060-AK
Fabric B	blocks	3/8 yard	8060-K
Fabric C	blocks	3/4 yard	8061-AK
Fabric D	blocks	3/8 yard	8061-K
Fabric E	blocks	5/8 yard	8062-AK
*Fabric F	blocks	3/8 yard	8062-K
Fabric G	blocks	3/8 yard	8063-AK
Fabric H	blocks	3/8 yard	8063-K
Fabric I	blocks	3/8 yard	8064-AK
Fabric J	blocks	1/2 yard	8064-K
Fabric K	blocks	1/2 yard	8065-AK
Fabric L	blocks	5/8 yard	8065-K
Fabric M	blocks	3/8 yard	8066-AK
Fabric N	blocks	1/2 yard	8066-K
Fabric O	blocks	3/8 yard	8067-AK
Fabric P	blocks	3/4 yard	8067-K
Fabric Q	blocks, binding	1 yard	3135-K
8 Brights	blocks	fat 1/8 yard ea.	
	3135-B2	3135-B3	3135-G2 3135-G3
	3135-LG	3135-LT	3135-T3 3135-T5
*Backing		5/4 yards	8062-K

Fabric A Cut (2) Set 1 patches,
see cutting at left (16 patches total)
Cut (2) Set 2 patches (8 patches total)

Fabric B Cut (2) Set 1 patches

Fabric C Cut (2) Set 1 patches
Cut (7) Set 2 patches

Fabric D Cut (2) Set 1 patches

Fabric E Cut (2) Set 1 patches
Cut (5) Set 2 patches

Fabric F Cut (3) Set 1 patches

Fabric G Cut (2) Set 1 patches

Fabric H Cut (2) Set 1 patches

Fabric I Cut (3) Set 1 patches

Fabric J Cut (2) Set 1 patches
Cut (4) Set 2 patches

B & W Quilt

Fabric K Cut (2) Set 1 patches
Cut (4) Set 2 patches

Fabric L Cut (3) Set 1 patches
Cut (3) Set 2 patches

Fabric M Cut (2) Set 1 patches

Fabric N Cut (2) Set 1 patches
Cut (4) Set 2 patches

Fabric O Cut (2) Set 1 patches

Fabric P Cut (2) Set 1 patches
Cut (6) Set 2 patches

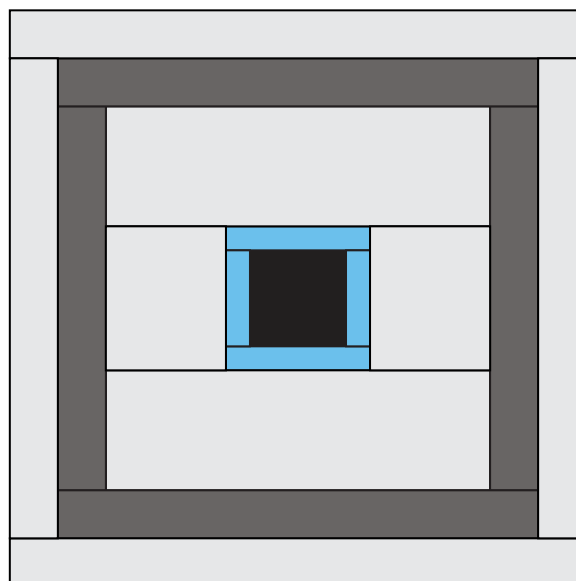
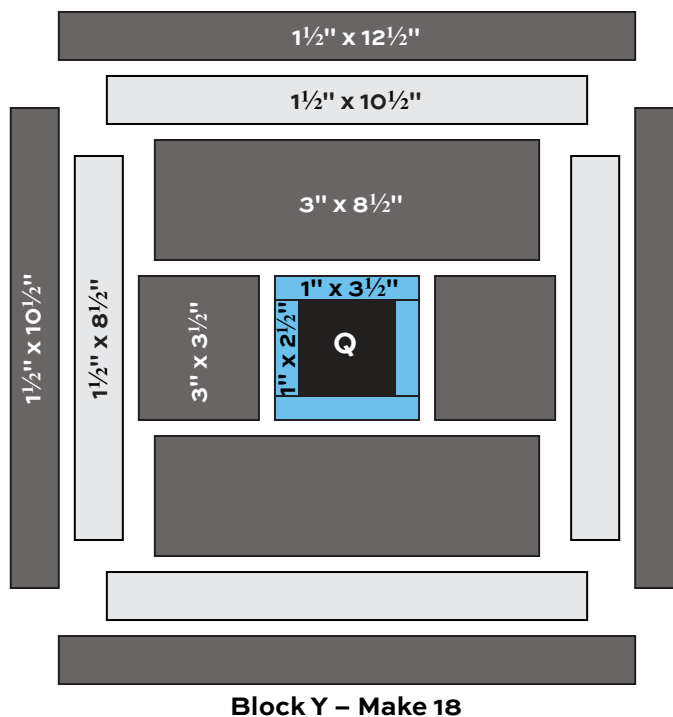
Fabric Q Cut (8) strips $2\frac{1}{2}$ " x WOF for binding
Cut (35) squares $2\frac{1}{2}$ " x $2\frac{1}{2}$ "

8 Brights From each:
Cut (8 or 10) rectangles 1 " x $3\frac{1}{2}$ " (70 total)
Cut (8 or 10) rectangles 1 " x $2\frac{1}{2}$ " (70 total)

Backing Cut (2) panels 34 " x 92 ", pieced to fit quilt top with overlap on all sides

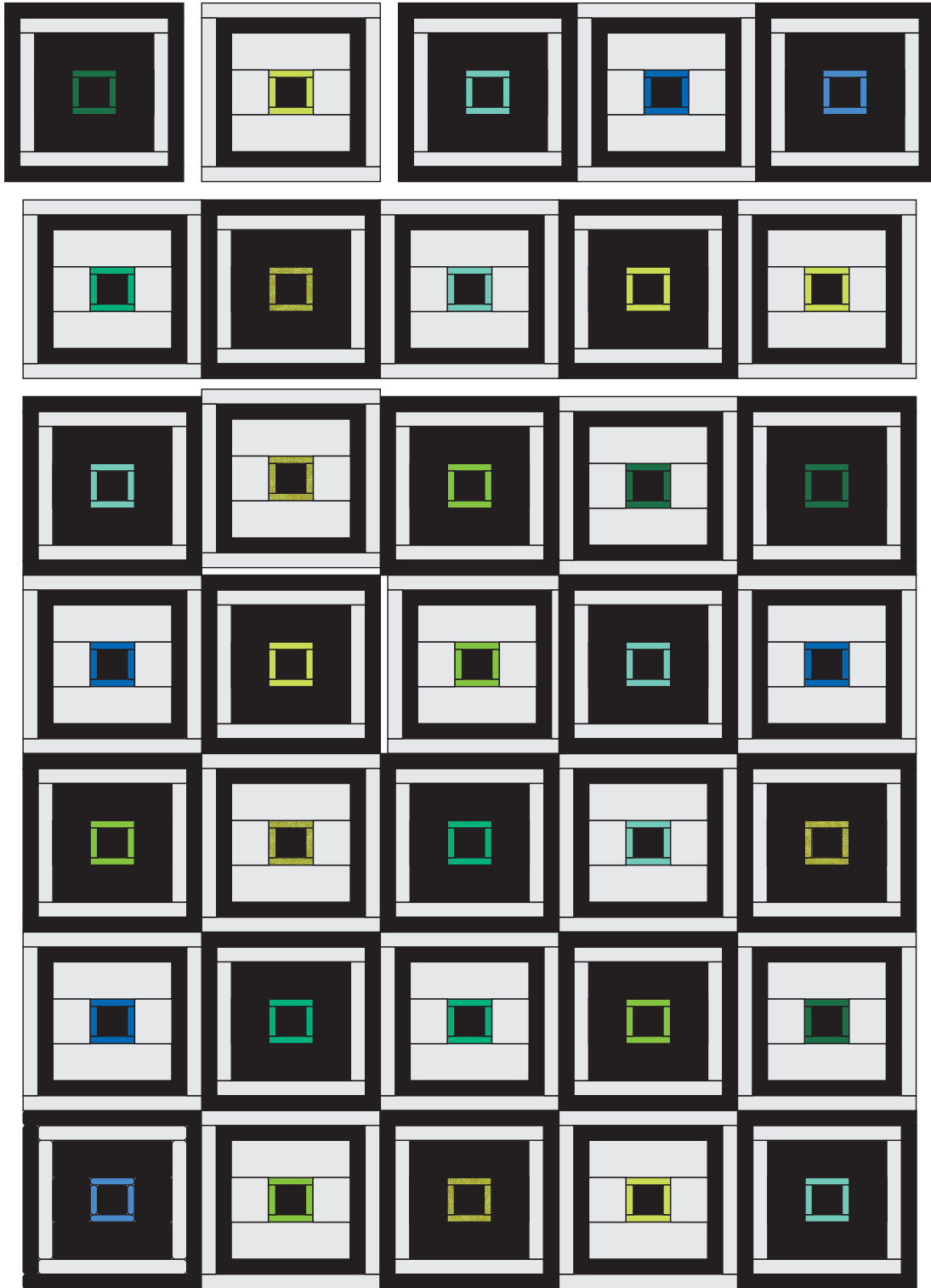
Making the Quilt

- Each Block Y requires Set 1 dark strips and Set 2 light strips, plus a bright print and Fabric Q square. Refer to the quilt photograph for fabric combinations. Feel free to join fabrics in any combination, just be sure that there is 1 light print and 1 dark print in each block. Referring to the Block Y diagram, sew the bright rectangles to the center Fabric Q square. Sew the light and dark strips to the center in the order shown. Press all seam allowances away from the center. The block should measure $12\frac{1}{2}$ " square. Make 18 Block Y.
- Each Block Z requires Set 1 light strips and Set 2 dark strips, plus a bright print and Fabric Q square. Sew the strips to the center Fabric Q square. Make 17 Block Z.
- Referring to the Quilt Diagram, arrange the blocks in 7 rows of 5 blocks each, alternating the Y and Z blocks as shown. Join the blocks in rows, and then join the rows.



Finishing the Quilt

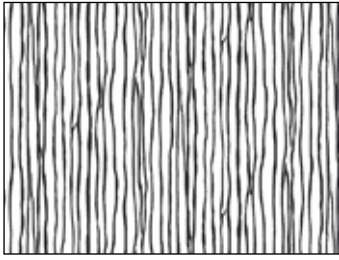
- Layer the quilt with batting and backing and baste. Quilt in the ditch around block patches. Quilt around the printed motifs in the blocks as you wish. Bind to finish the quilt.



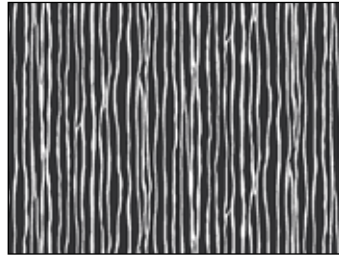
Quilt Diagram

B & W

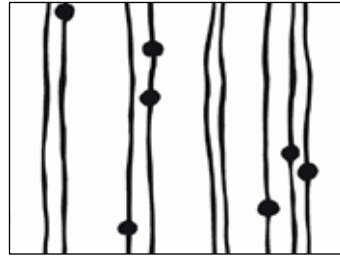
BY KIM SCHAEFER



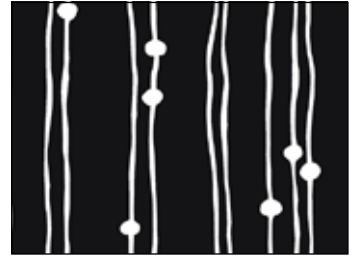
8060-AK



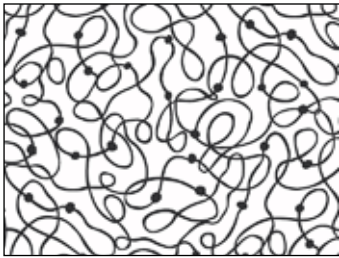
8060-K



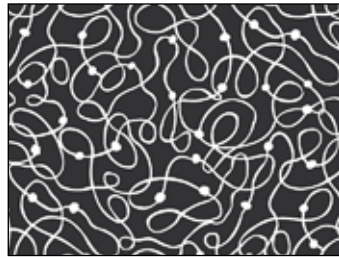
8061-AK



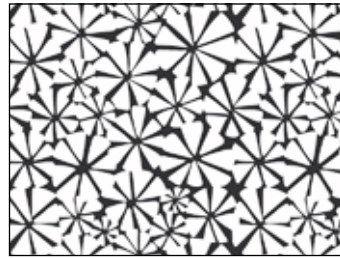
8061-K



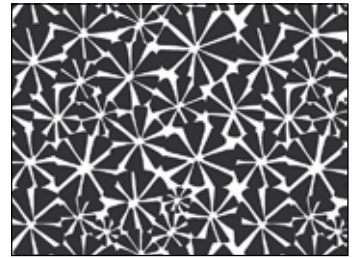
8062-AK



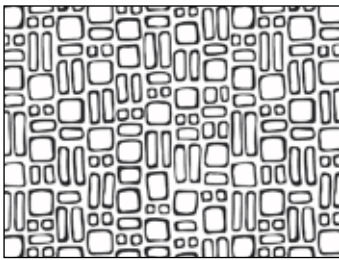
8062-K



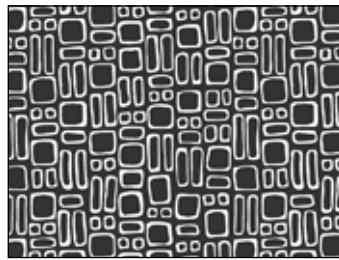
8063-AK



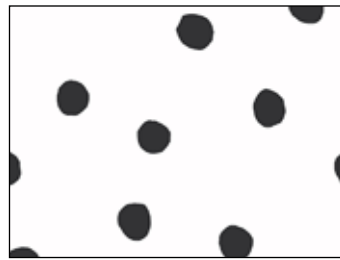
8063-K



8064-AK



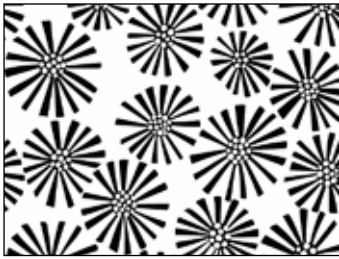
8064-K



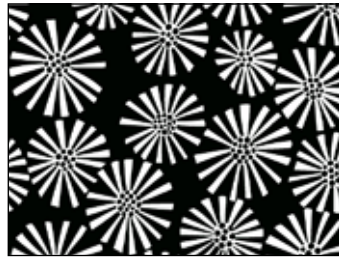
8065-AK



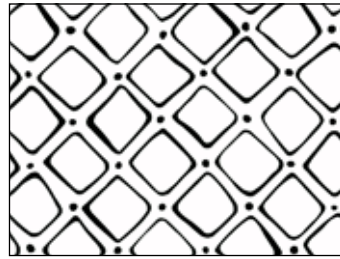
8065-K



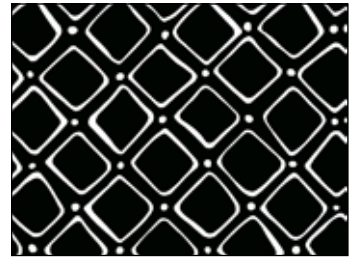
8066-AK



8066-K

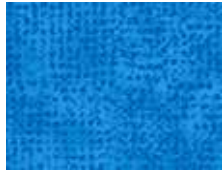


8067-AK

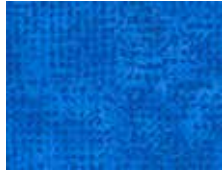


8067-K

Blend with
fabrics from
Tic Tac
by Kim Schaefer



3135-B2



3135-B3



3135-G2



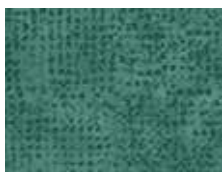
3135-G3



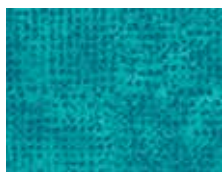
3135-K



3135-LG



3135-LT



3135-T3



3135-T5

All fabrics are used in quilt pattern.
Fabrics shown are 30% of actual size.

andover

makower uk
The Henley Studio

Free Pattern Download Available

1384 Broadway New York, NY 10018
Tel. (800) 223-5678 • andoverfabrics.com