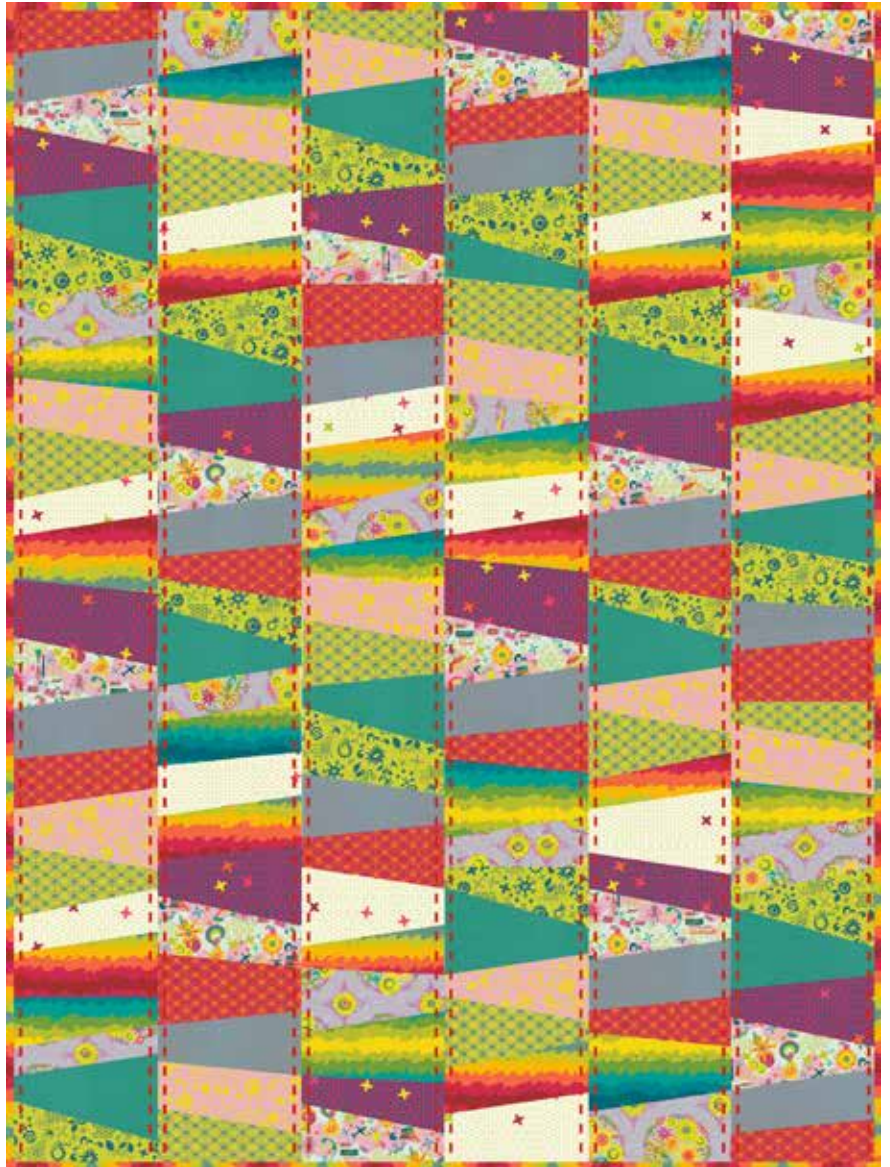


Clover Sunshine

FABRICS BY ALISON GLASS



About Clover Sunshine

Clover Sunshine is a collection celebrating love and favorite things. To honor my daughter, Anna and I talked about her favorite things, ideas that make her happy, which makes me happy. Clover Sunshine is inspired by the idea that people are connected, and the goodness that can come from knowing others. — Alison Glass



Cobblestone Quilt Design:
Alison Glass

Quilt Size: **60" x 80"**

andoverfabrics.com

andover

makower uk
The Henley Studio

Free Pattern Download Available

1384 Broadway New York, NY 10018
Tel. (800) 223-5678 • andoverfabrics.com

Cobblestone Quilt



Introducing Andover Fabrics new collection: **Clover Sunshine** by Alison Glass

Quilt designed by Alison Glass

Quilt finishes 60" x 80"

Fabric Requirements

		Yardage	Purple	Teal	
Fabric A	blocks, binding	1½ yards	7241-P	7241-TX	
½ yard fabrics		½ yard each			
Purple					
7238-P	7239-PE	7240-PE	7240-PG	7241-PG	7242-P
7242-PL	7243-PG	7243-PO	A-T-Peacock	A-T-Silver Lining	
Teal					
7238-T	7239-T	7240-TG	7240-TR	7241-TE	7242-T
7242-TY	7243-TE	7243-TY	A-T-Toxic	A-T-Indian Summer	
Backing		5 yards	7239-PE	7239-T	

This fun throw-size quilt is a sure-fire success and makes a great first quilt. The rotary-cutting technique allows you to make a quilt that is truly one-of-a-kind. The fun is in the placement of the fabrics, a lively assortment of bright and bold prints.

Cutting Directions

Note: Read assembly directions before cutting patches. All measurements are cut sizes and include ¼" seam allowances. WOF designates the width of fabric from selvedge to selvedge (approximately 42" wide).

Fabric A Cut (8) strips 2½" x WOF for binding
Cut (6) rectangles 9" x 10½"

½ Yd. Fabrics – From each:

Cut (6) rectangles 9" x 10½" (a total of 72 rectangles)

Backing Cut 2 panels and piece them to fit quilt top with overlap on all sides

Making and Assembling the Quilt

1. Cut each of the half-yard fabrics into rectangles 9" x 10½". Cut 6 rectangles from each of the 12 fabrics. If your useable yardage is less than 42" wide and shorter than 18" long, then cut the rectangles as large as you can. Just cut them all the same size.
2. Position any 2 different rectangles right side up on a cutting surface, one on top of the other as shown in Diagram 1. Place a long acrylic ruler on top of the rectangles, and slice across them at an angle. The angle doesn't matter, since you will be slicing through pairs at different angles to obtain the randomness that is the charm of this quilt. The cut results in patches from both fabrics that fit together like a puzzle.

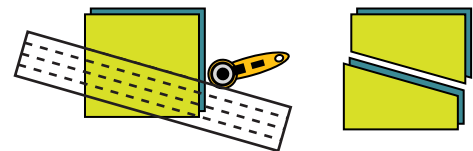


Diagram 1

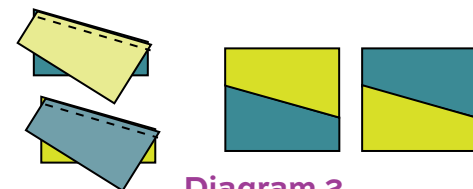


Diagram 2

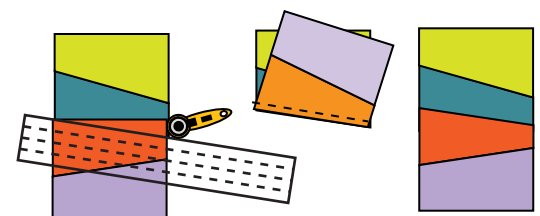


Diagram 3



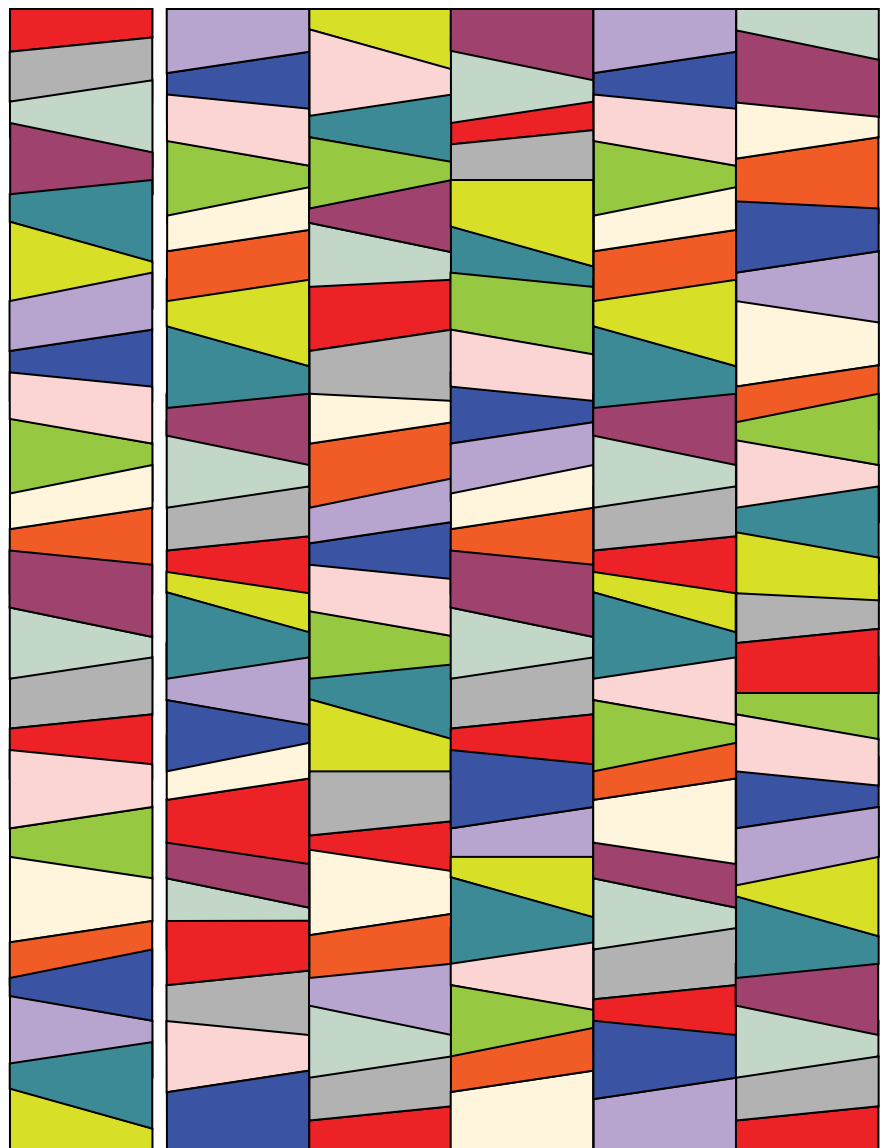
Diagram 4

Cobblestone Quilt

3. Stitch the top patch of one fabric to the bottom patch of the second fabric (Diagram 2). Hint: Offset the patches so the line of stitching begins right where the fabrics crisscross as shown. Repeat with the remaining 2 patches. You now have 2 pieced “blocks.”
4. Repeat Steps 2 and 3 with pairs of rectangles. Be sure to change the angle of the ruler. For half of the pairs, tip the ruler higher on the left side of the rectangles. For half of the pairs, tip the ruler higher on the right side. The angle should be more extreme on some pairs. If you want your quilt to look scrappier, don’t combine the same two fabrics together more than once or twice. Make a total of 72 blocks.
5. On a large flat surface or design wall, arrange the blocks in 6 columns of 12 blocks each. Be sure that the same fabric does not touch itself on any edges.
6. To keep the angled look between blocks, follow this technique. Place a block on the cutting mat, right side facing up. Overlap a second block right side facing up along the bottom of the first block. Overlap the two blocks 2” to 3”. Angle the ruler across the overlap and cut the 2 blocks as shown. Stitch the blocks together (Diagram 3) along their angled edges. Continue in this manner until all 12 blocks have been joined in one column (Diagram 4). If the column’s sides are not perfectly straight, trim the sides even. Make 6 columns. Hint: If a column is too short, add another fabric strip.
7. Align each column with its neighbor along the top edge and pin. Don’t worry if the columns match at the bottom—they probably won’t. Stitch columns together side by side, aligning all across the top. Trim the bottom of the quilt even with the bottom of the shortest column.

Finishing the Quilt

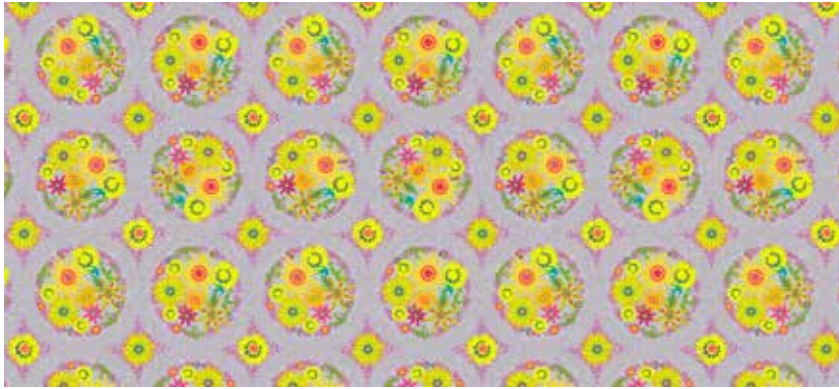
8. Layer the quilt with batting and backing and baste. Quilt in the ditch around the block patches. If you wish to make the over-sized, decorative quilting stitches shown in the illustration, use a heavier thread such as No. 8 perle (pearl) cotton in a bright contrasting color. We suggest that you hand quilt $\frac{1}{2}$ ” away from edges of the columns. Hint: Place lengths of $\frac{1}{2}$ ”-wide masking tape alongside each seam as a guide. To keep the stitches even length, use Tiger Tape, an adhesive tape available at quilt shops that has evenly spaced lines to use as guides. Make your stitches about $\frac{1}{4}$ ” long and spaced $\frac{1}{4}$ ” apart.
9. Bind to finish the quilt.



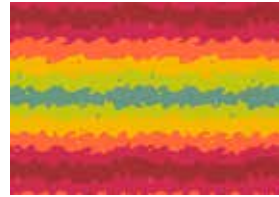
Quilt Diagram

Clover Sunshine

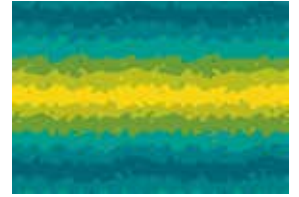
FABRICS BY ALISON GLASS



7238-P*



7241-P*



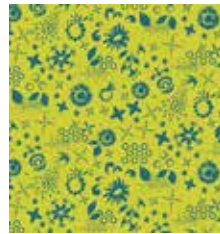
7241-PG*



7239-PE*



7240-PE*



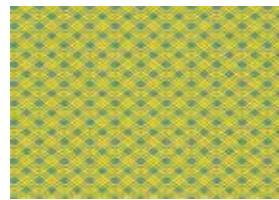
7240-PG*



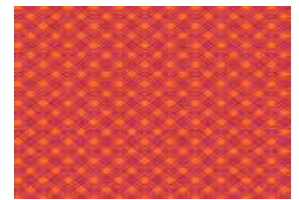
7242-P*



7242-PL*



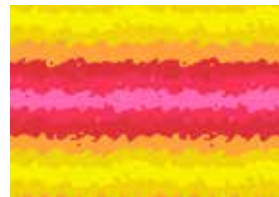
7243-PG*



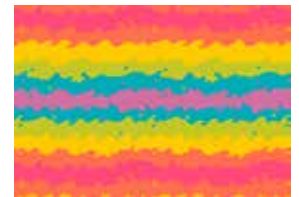
7243-PO*



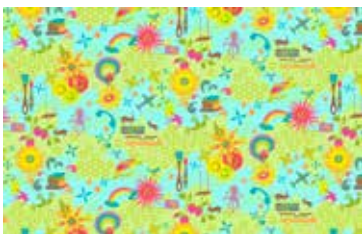
7238-T



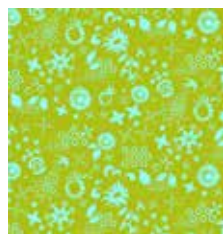
7241-TE



7241-TX



7239-T



7240-TG



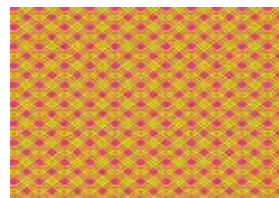
7240-TR



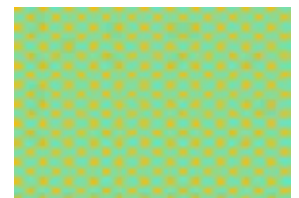
7242-T



7242-TY



7243-TE



7243-TY

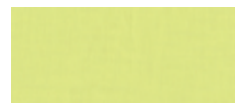
Blend with Andover
Textured Solids



A-T Peacock*



A-T Silver Lining*



A-T Toxic



A-T Indian Summer

*Indicates fabrics used in quilt pattern. Fabrics shown are 10% of actual size.

andover

makower uk
The Henley Studio

Free Pattern Download Available

1384 Broadway New York, NY 10018
Tel. (800) 223-5678 • andoverfabrics.com