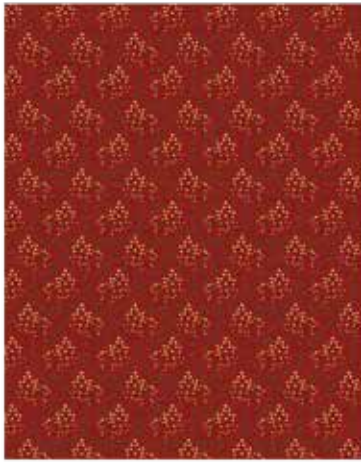


# Crystal Farm

BY LAUNDRY BASKET QUILTS

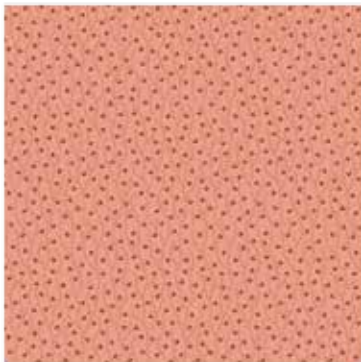


Berry Patch  
Quilt Design:

**Edyta Sitar**

Quilt Size: 34" x 34"

[andoverfabrics.com](http://andoverfabrics.com)



andover



makower uk  
*The Henley Studio*

Free Pattern Download Available

1384 Broadway New York, NY 10018  
Tel. (800) 223-5678 • [andoverfabrics.com](http://andoverfabrics.com)

# Berry Patch



Featuring Andover Fabrics new Collection: Crystal Farm by Laundry Basket Quilts

Quilt designed by Edyta Sitar

Quilt finished 34" x 34"

Berry Patch is a great way for applique lovers to create a striking, easy project using Edyta's pre-cut applique shapes!

## Cutting Directions

**Note: Read assembly directions before cutting patches.** Borders are cut to exact length required plus ¼" seam allowance. WOF designates the width of fabric from selvedge to selvedge (approximately 42" wide).

**Fabric A** Cut (1) 6 ½" x WOF strips. Sub-cut the strips into (4) 6 ½" squares and (4) 2 ½" squares.

**Fabric B** Cut (3) 6 ½" x WOF strips. Sub-cut (13) 6 ½" squares and (6) 2 ½" squares.  
Cut (1) 9 ¾" x WOF strip. Sub-cut (3) 9 ¾" squares. Cut the squares across both diagonals to make (12) side setting triangles.

Cut (1) 5 ⅛" x WOF strip. Sub-cut (2) 5 ⅛" squares. Cut the squares across (1) diagonal to make (4) corner setting triangles.

**Fabric C** Cut (1) 2 ½" x WOF strip. Sub-cut the strip into (3) 2 ½" squares.

**Fabric D** Cut (1) 2 ½" x WOF strip. Sub-cut the strip into (8) 2 ½" squares.

**Fabric E** Cut (1) 2 ½" x WOF strip. Sub-cut the strip into (4) 2 ½" squares.

**Fabric F** Cut (1) 2 ½" x WOF strip. Sub-cut the strip into (3) 2 ½" squares.

**Fabric G** Cut (1) 2 ½" x WOF strip. Sub-cut the strip into (7) 2 ½" squares.

**Fabric H** Cut (1) 2 ½" x WOF strip. Sub-cut the strip into (1) 2 ½" square.

## Fabric Requirements

		<b>Yardage</b>	<b>Fabric</b>
<b>Fabric A</b>	blocks	¼ yard	8614-T
<b>Fabric B</b>	background	1 ⅛ yards	8625-L
<b>Fabric C</b>	blocks	⅛ yard	8619-T
<b>Fabric D</b>	blocks	⅛ yard	8620-T
<b>Fabric E</b>	blocks	⅛ yard	8616-T
<b>Fabric F</b>	blocks	⅛ yard	8625-T
<b>Fabric G</b>	blocks	⅛ yard	8627-T
<b>Fabric H</b>	blocks	⅛ yard	8623-T
<b>Fabric I</b>	blocks	⅛ yard	8621-T
<b>Fabric J</b>	blocks	⅛ yard	8627-L
<b>Fabric K</b>	blocks	⅛ yard	8622-L
<b>Fabric L</b>	blocks	⅛ yard	8619-L
<b>Fabric M</b>	binding	⅜ yard	8616-R
<b>Backing</b>		1 ¼ yards	8614-L

### Items needed for applique:

Crystal Farm Silhouettes Fusible Applique Shapes- LBQ-0647-S6

or

Crystal Farm Snippets Non-Fusible Applique Shapes-LBQ-0656-A6

Available for purchase at your local quilt shop or at [www.laundrybasketquilts.com](http://www.laundrybasketquilts.com)

**Fabric I** Cut (1) 2 ½" x WOF strip. Sub-cut the strip into (2) 2 ½" squares.

**Fabric J** Cut (1) 2 ½" x WOF strip. Sub-cut the strip into (10) 2 ½" square.

**Fabric K** Cut (1) 2 ½" x WOF strip. Sub-cut the strip into (13) 2 ½" square.

**Fabric L** Cut (1) 2 ½" x WOF strip. Sub-cut the strip into (11) 2 ½" square.

**Fabric M** Cut (4) 2 ½" x WOF strips for the binding.

**Backing** Cut (1) 42" x 42" strip for the back.

# Berry Patch

## Making the Quilt

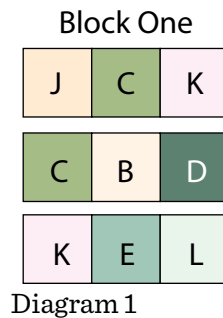
### 1. Block Assembly

Sew (1) 2 1/2" Fabric J square to the left side of (1) 2 1/2" Fabric C square. Sew (1) 2 1/2" Fabric K square to the right side of the Fabric C square to make the top row (Diagram 1).

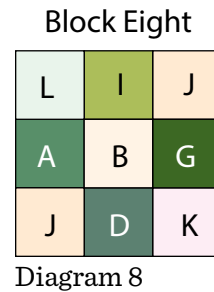
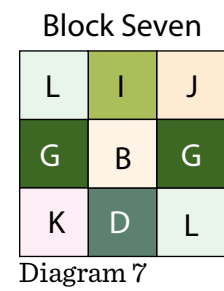
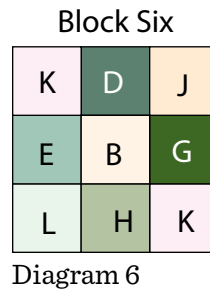
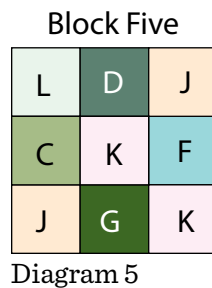
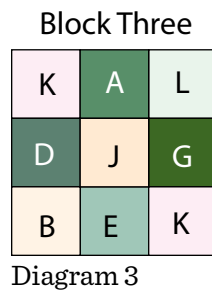
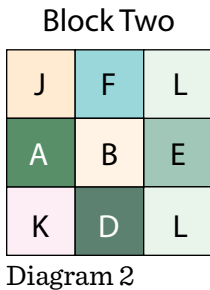
2. Sew (1) 2 1/2" Fabric C square to the left side of (1) 2 1/2" Fabric B square. Sew (1) 2 1/2" Fabric D square to the right side of the Fabric B square to make the middle row (Diagram 1).

3. Sew (1) 2 1/2" Fabric K square to the left side of (1) 2 1/2" Fabric E square. Sew (1) 2 1/2" Fabric L square to the right side of the Fabric E square to make the bottom row (Diagram 1).

4. Sew the (3) rows together to make (1) Block One square (Diagram 1).



5. Repeat Steps 1-4 and use Diagrams 2 through 8 for fabric identification and location to make one of each block, Block Two through Block Eight.



### Quilt Top Assembly

*(Refer to Diagram 9 when assembling the quilt top.)*

6. Sew (1) Fabric B side setting triangle to opposite sides of (1) 6 1/2" Fabric B square. Sew (1) Fabric B corner setting triangle to the top of the Fabric B square to make Row One.
7. Sew (1) 6 1/2" Fabric B square to each side of (1) Block One square. Sew (1) Fabric B side setting triangle to each end of the strip to make Row Two.
8. Sew (1) Block Two square to the left side of (1) 6 1/2" Fabric A square. Sew (1) Block Three square to the right side of the Fabric A square. Sew (1) 6 1/2" Fabric B square to each end of the new strip. Sew (1) Fabric B side setting triangle to each end of the new strip to make Row Three.
9. Sew (1) Fabric B corner setting triangle, (1) 6 1/2" Fabric B square, (1) Block Four square, (1) 6 1/2" Fabric A square, (1) 6 1/2" Fabric B square, (1) 6 1/2" Fabric A square, (1) Block Five square, (1) 6 1/2" Fabric B square and (1) Fabric B corner setting triangle together, in that order, to make Row Four.
10. Sew (1) Block Six square to the left side of (1) 6 1/2" Fabric A square. Sew (1) Block Seven square to the right side of the Fabric A square. Sew (1) 6 1/2" Fabric B square to each end of the new strip. Sew (1) Fabric B side setting triangle to each end of the new strip to make Row Five.

# Berry Patch

11. Sew (1) 6 1/2" Fabric B square to each side of (1) Block Eight square. Sew (1) Fabric B side setting triangle to each end of the strip to make Row Six.
12. Sew (1) Fabric B side setting triangle to opposite sides of (1) 6 1/2" Fabric B square. Sew (1) Fabric B corner setting triangle to the bottom of the Fabric B square to make Row Seven.
13. Sew the (7) rows together, in numerical order, to make the quilt top.
14. Refer to the Quilt Layout and follow the instructions on your Silhouettes Fusible Applique Shapes-Crystal Farms or Snippets Applique Shapes-Crystal Farms to applique the shapes onto the quilt top.

## Finishing the Quilt

15. Layer and quilt as desired.
16. Sew the (4) Fabric S binding strips together, end to end with a 45-degree seams, to make the binding. Fold this long strip in half lengthwise with wrong sides together and press.
17. Bind as desired.

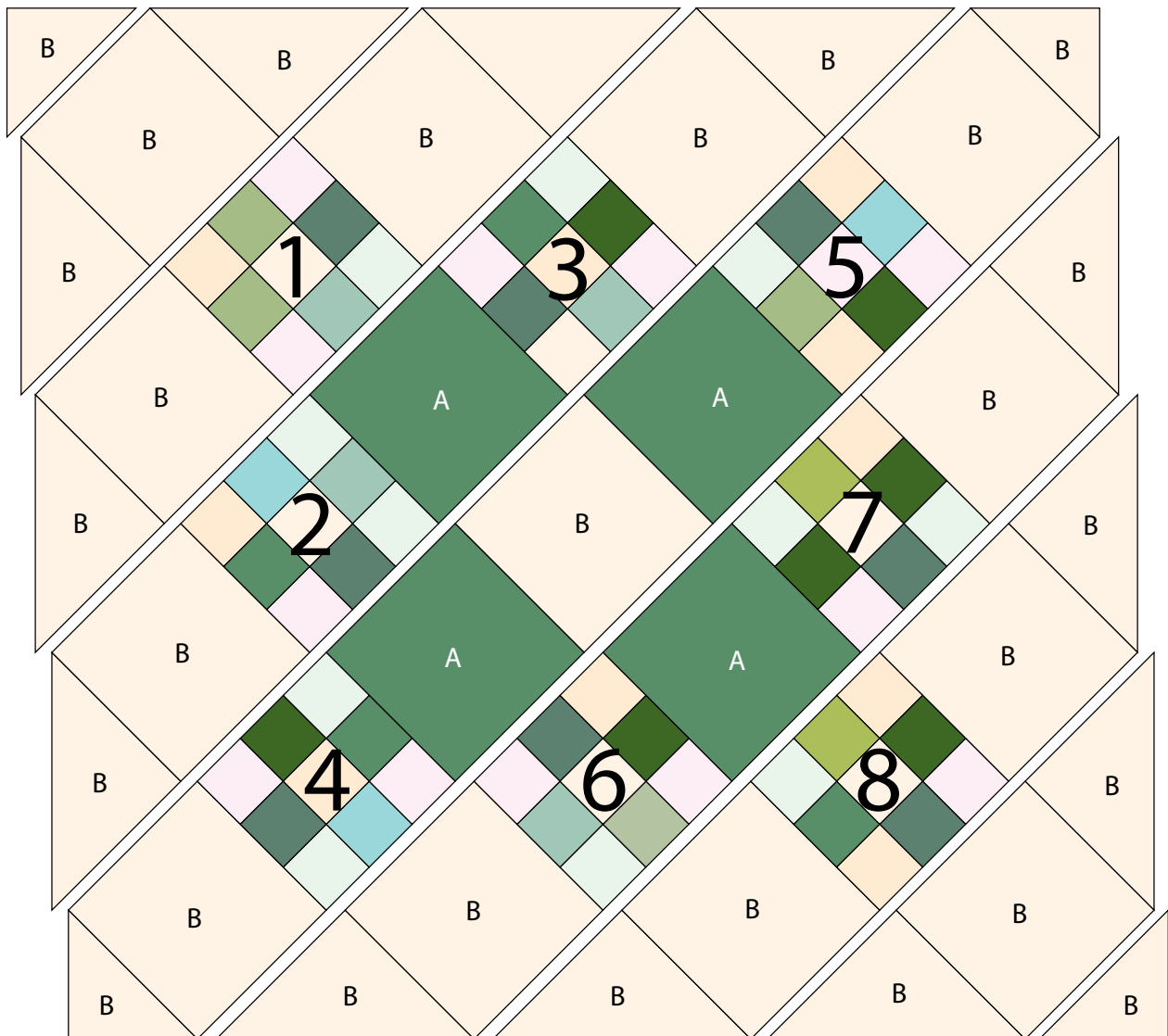


Diagram 9

# Berry Patch



Quilt Layout

# Crystal Farm

BY LAUNDRY BASKET QUILTS



8614-L 1 1/4 yds  
(includes backing)



8614-N



8614-R



8614-T 1/4 yd



8615-L



8615-N



8616-R 3/8 yd  
(includes binding)



8616-T 1/8 yd



8616-Y



8617-R



8617-Y



8618-E



8619-L 1/8 yd



8619-R



8619-T 1/8 yd



8619-Y



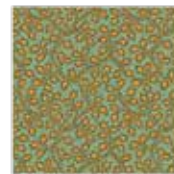
8620-N



8620-T 1/8 yd



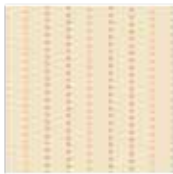
8621-L



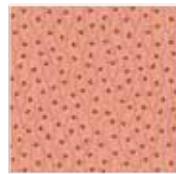
8621-T 1/8 yd



8622-E



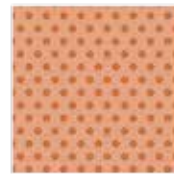
8622-L 1/8 yd



8623-E



8623-T 1/8 yd



8624-E



8624-Y



8625-L 1 1/8 yds



8625-T 1/8 yd



8626-E



8626-L



8627-L 1/8 yd



8627-T 1/8 yd

## About Our Fabrics

A recognized leader in the quilting industry, Andover Fabrics features designs by a wide variety of talented artists and licenses, including Downton Abbey and Eric Carle's Very Hungry Caterpillar. Catering to the tastes of creative and dedicated quilters, Andover has a style for everyone — authentic reproductions, romantic florals, modern and more.

Fabrics shown are 25% of actual size.

andover

makower uk  
*The Henley Studio*

Free Pattern Download Available

1384 Broadway New York, NY 10018  
Tel. (800) 223-5678 • [andoverfabrics.com](http://andoverfabrics.com)