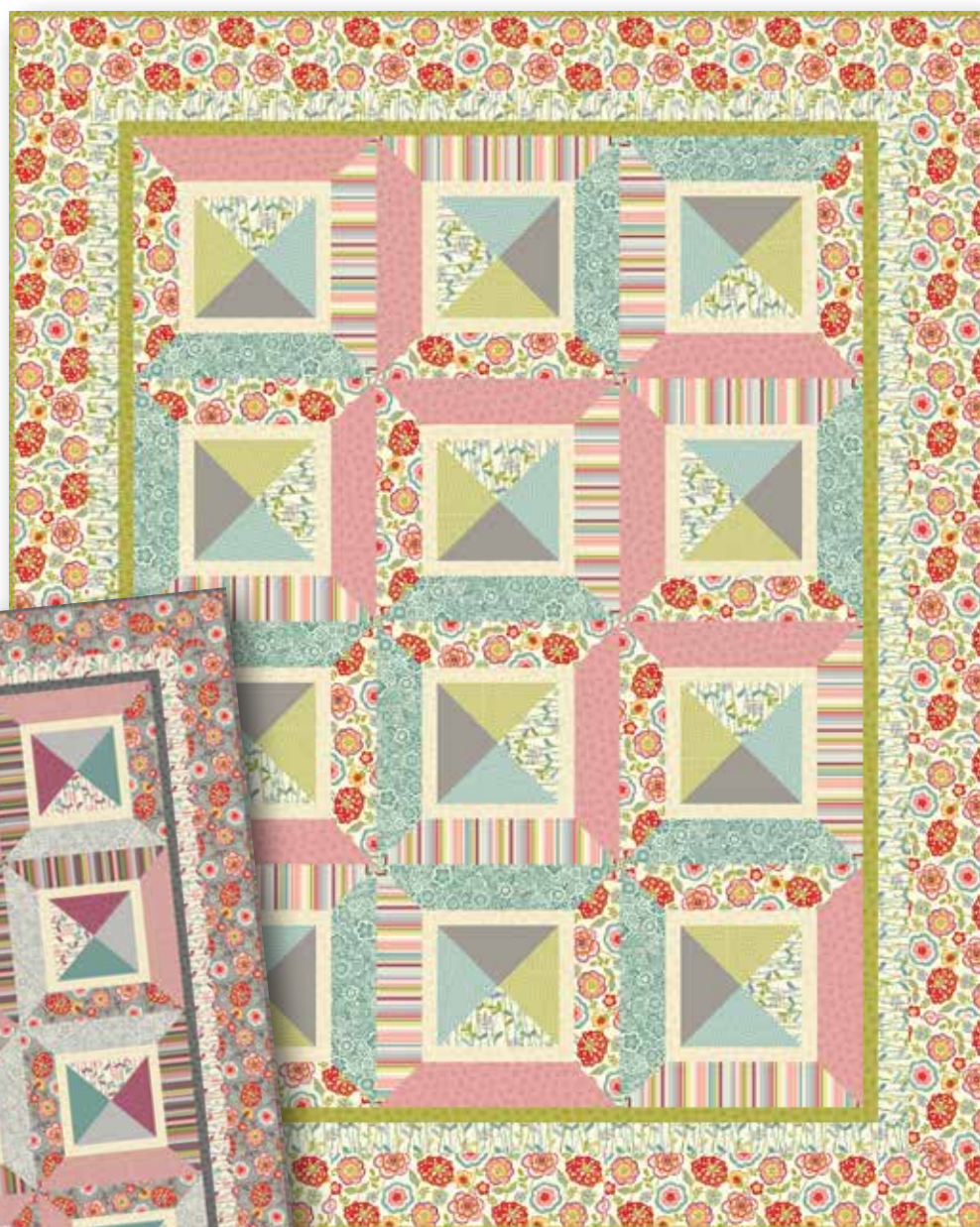




PRESENTS

# DECO

Deco fabrics by  
makower uk  
*The Henley Studio*



Quilt designed by Jean Ann Wright

Quilt size: 64" x 80"

**makower uk**<sup>®</sup>

[www.andoverfabrics.com](http://www.andoverfabrics.com)

# Deco Quilt

Introducing Andover Fabrics new collection: Deco by Makower UK The Henley Studio  
Quilt designed by Jean Ann Wright

Quilt finishes 64" x 80"  
8 Pieced Blocks: 16" x 16"

*Flowing, asymmetrical motifs are the feature of these unusual colorways. The addition of gray to the color palette brings a fresh, contemporary look. The blocks are made with strip-piecing and rotary cutting methods. Although the blocks are all the same, rotating them adds interest and movement in the overall design.*

## Fabric Requirements

		Yardage	Light	Charcoal
Fabric A	border, blocks	2 $\frac{1}{8}$ yards	1142-Q	1142-S
*Fabric B	border, blocks	1 yard	1143-B	1143-P
Fabric C	blocks	$\frac{3}{4}$ yard	1144-B	1146-P
Fabric D	border, binding	1 yard	1145-G	1145-S
Fabric E	blocks	$\frac{3}{4}$ yard	1145-P	1144-S
Fabric F	blocks	$\frac{3}{4}$ yard	1145-Q	1145-Q
Fabric G	blocks	$\frac{1}{2}$ yard	1146-B	1145-R
Fabric H	blocks	$\frac{1}{2}$ yard	1146-G	2000-T63
Fabric I	blocks	$\frac{3}{4}$ yard	1147-Q	1147-S
Fabric J	blocks	$\frac{1}{2}$ yard	2000-S62	1146-S
*Backing		5 yards	1143-B	1143-P

\*extra yardage needed for backing

## Cutting Directions

**Note: Read assembly directions before cutting patches.**  
All measurements are cut sizes and include seam allowances. Borders are cut the exact lengths required plus  $\frac{1}{4}$ " seam allowances. WOF designates the width of fabric from selvedge to selvedge (approximately 42" wide).

**Fabric A** Cut (2) side borders 5 $\frac{1}{2}$ " x 70 $\frac{1}{2}$ ", cut lengthwise  
Cut (2) top/bottom borders 5 $\frac{1}{2}$ " x 64 $\frac{1}{2}$ ", cut lengthwise  
Cut (12) strips 3 $\frac{1}{2}$ " x 18"

**Fabric B** Cut (2) side borders 2 $\frac{1}{2}$ " x 66 $\frac{1}{2}$ ", cut crosswise and pieced  
Cut (2) top/bottom borders 2 $\frac{1}{2}$ " x 54 $\frac{1}{2}$ ", cut crosswise and pieced  
Cut (12) strips 5" x 10", cut crosswise

**Fabric C** Cut (12) strips 3 $\frac{1}{2}$ " x 18", cut crosswise

**Fabric D** Cut (2) side borders 1 $\frac{1}{2}$ " x 64 $\frac{1}{2}$ ", cut crosswise and pieced  
Cut (2) top/bottom borders 1 $\frac{1}{2}$ " x 50 $\frac{1}{2}$ ", cut crosswise and pieced  
Cut (8) strips 2 $\frac{1}{2}$ " x WOF for binding

**Fabric E** Cut (12) strips 3 $\frac{1}{2}$ " x 18", cut crosswise

**Fabric F** Cut (48) strips 1 $\frac{1}{2}$ " x 12"

**Fabric G** Cut (12) strips 5" x 10", cut crosswise

**Fabric H** Cut (12) strips 5" x 10", cut crosswise

**Fabric I** Cut (12) strips 3 $\frac{1}{2}$ " x 18", cut crosswise

**Fabric J** Cut (12) strips 5" x 10", cut crosswise

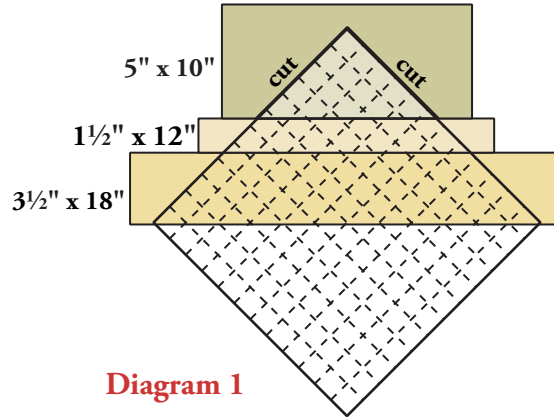
**Backing** Cut (2) panels 36" x 88", pieced to fit quilt top with overlap on all sides

## Making and Assembling the Quilt

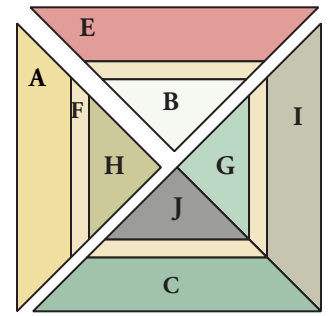
1. Hint: Make 1 block as a sample to test your seam allowances. Referring to Diagram 1 and the Block Diagram, join 3 strips in the order shown, using these combinations: A/F/H and I/F/G. Press seam allowances toward the A or I. Likewise, join these strip combinations: E/F/B and C/F/J. Press seam allowances toward the B or J. The center strip should measure 1" from seam to seam.
2. Referring to Diagram 1, position a 12" or larger square ruler on top of the right side of a pieced band from Step 1. Align the ruler's 12" marks along the bottom raw edge of the long strip as shown. Be sure that both sides of the ruler align with the top seam of the narrow center strip at the same mark (approximately at 6"). Make note of this measurement. Cut the pieced band along the 2 sides of the ruler to obtain a triangle. Repeat this step for the other 3 pieced bands from Step 1, aligning the narrow strip's top seam with the same measurement on the ruler each time, and aligning the 12" marks on the ruler with the bottom edge of the 18" strip.

# Deco Quilt

3. As long as your triangles are the same size and the center strip is in the same position, then the 4 triangles will fit together. Your blocks may end up slightly larger or smaller than the 16" finished. That's all right as long as they are all the same size. Join the 4 pieced triangles as shown in the Block Diagram to make a block. If you are satisfied with the way the seams line up, proceed to make a total of 12 blocks. If you are not satisfied, adjust your seam widths, pressing techniques, or cutting techniques.



**Diagram 1**



Make 12

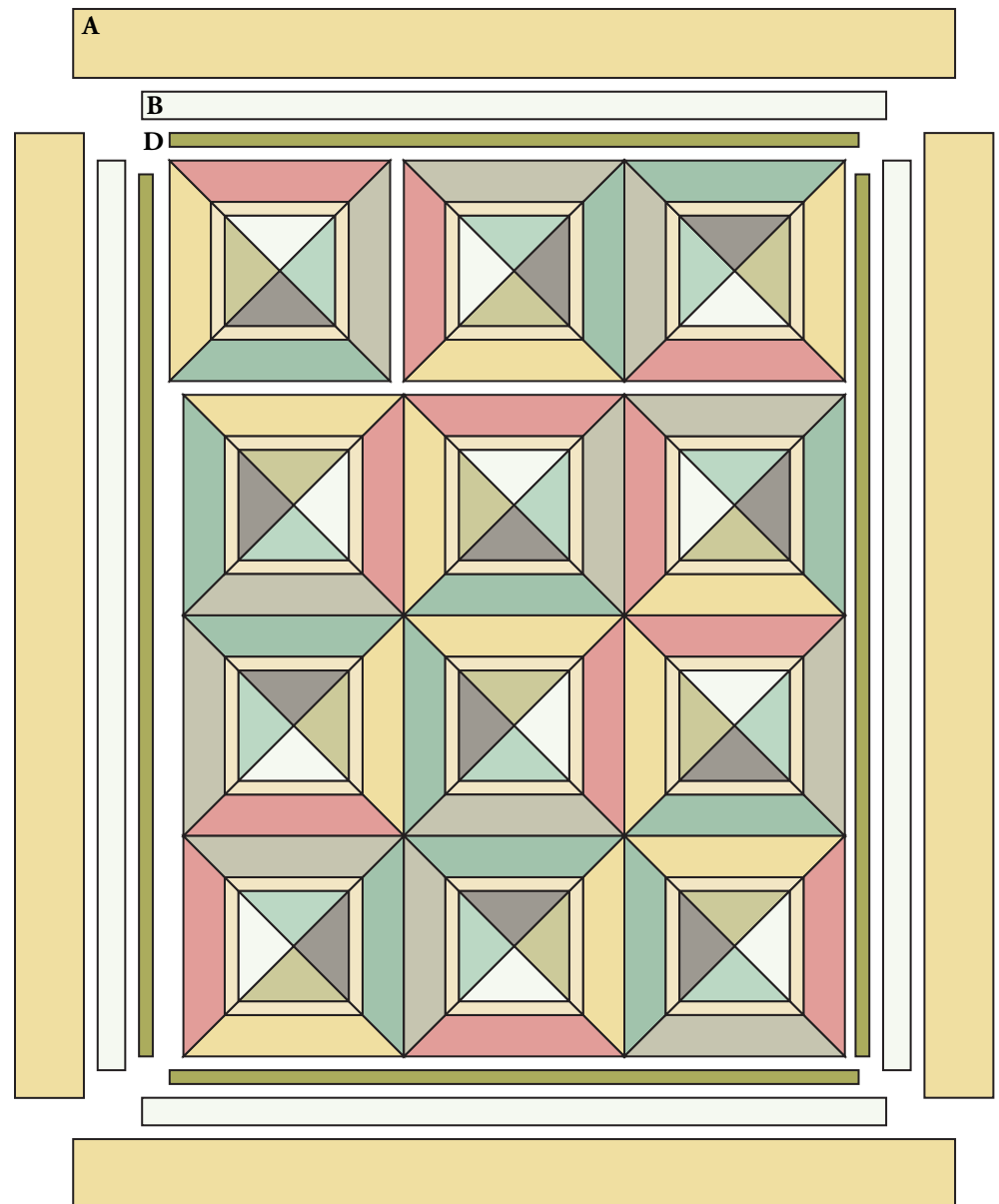
**Block Diagram**

4. Referring to the Quilt Diagram, join the blocks in 4 rows, rotating the blocks as shown or as you wish. Press seam allowances in opposite directions in adjacent rows. Join the rows.

5. Add the borders in this order: Fabric D (side borders always first); Fabric B, and Fabric A.

## Finishing the Quilt

6. Layer the quilt with batting and backing and baste. Quilt in the ditch around borders and block patches. Quilt around the printed motifs in the outer border. Bind to finish the quilt.



**Quilt Diagram**

# Deco by makower uk

The Henley Studio



**makower uk**

1384 Broadway  
New York, NY 10018  
(800) 223-5678  
www.andoverfabrics.com



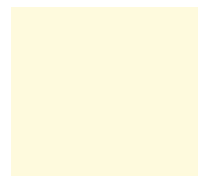
1142-Q\*



1143-B\*



1144-B\*



2000-Q60



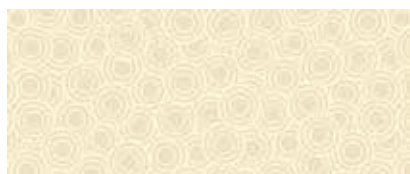
2000-P64



1145-G\*



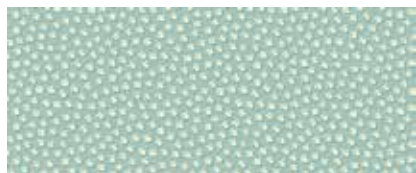
1145-P\*



1145-Q\*



2000-G60



1146-B\*



1146-G\*



1147-Q\*



2000-T63



1142-S



1143-P



1144-S



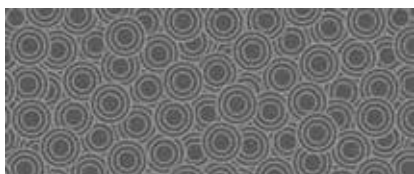
2000-G66



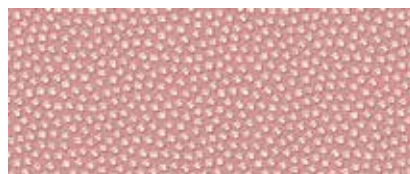
2000-R66



1145-R



1145-S



1146-P



2000-S62\*

\*Indicates fabric used in quilt pattern.  
Fabrics shown are 25% of actual size.



1147-S



1146-S



2000-S63