

Downton Abbey® The Lady Rose Collection

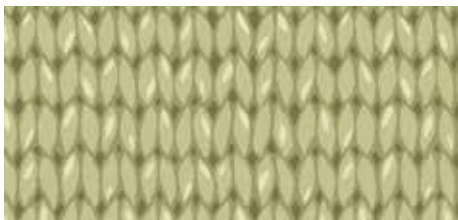
FABRICS BY KATHY HALL



Flapper Follies Quilt Design:
Lucy Fazely

Quilt Size: 63 1/8" x 63 1/8"

andoverfabrics.com



About Lady Rose

Made up of daring designs, edging into the art deco era. Color-wise, her collection includes some of the purples she wore while the family was still in mourning for Cousin Matthew. However, her collection also features some of the rich, cobalt blues and bright, hot pinks that are so becoming to her coloring and her age. This collection also includes faux-knits and argyles that the Prince of Wales made so popular during the 1920s.

Downton™ and Downton Abbey®. ©2013
Carnival Film & Television Limited. All Rights Reserved.

andover

makower uk
The Henley Studio

Free Pattern Download Available

1384 Broadway New York, NY 10018
Tel. (800) 223-5678 • andoverfabrics.com

8/10/14

Flapper Follies Quilt



Introducing Andover Fabrics new collection:

Downton Abbey® – THE LADY ROSE COLLECTION by Kathy Hall

Quilt design by Lucy Fazely

Quilt finishes 63 $\frac{1}{8}$ " x 63 $\frac{1}{8}$ "

25 Block Y: 8" x 8"

16 Block Z: 8" x 8"

Lord and Lady Grantham's ward, Lady Rose, embraced the Roaring Twenties with gusto in the beloved British television production. The bright and bold colors in this fabric collection attest to the changing times. Simple pinwheel blocks are turned on point, and then are framed with fabric printed with the image of the family home, Downton Abbey.

Fabric Requirements

		Yardage	Fabric
Fabric A	blocks	1 yard	7617-L
*Fabric B	setting, blocks	2 yards	7617-N
Fabric C	border	$\frac{3}{4}$ yard	7618-N
2$\frac{1}{2}$" Strips	blocks	1 pack	
	7611-B	7611-E	7612-B
	7612-E	7613-B	7613-E
	7614-EC	7614-BP	7615-B
	7615-E	7616-BG	7616-BP
	7616-EC	7616-EG	
Backing		4 $\frac{1}{8}$ yards	7613-B
*includes binding			

Cutting Directions

Note: Read assembly directions before cutting patches. All measurements are cut sizes and include $\frac{1}{4}$ " seam allowances. Borders include 2" extra length for insurance. WOF designates the width of fabric from selvedge to selvedge (approximately 42" wide).

Fabric A Cut (100) rectangles 2 $\frac{1}{2}$ " x 4 $\frac{1}{2}$ "

Fabric B Cut (7) strips 2 $\frac{1}{2}$ " x WOF for binding
Cut (4) squares 12 $\frac{5}{8}$ " x 12 $\frac{5}{8}$ ", cut in half diagonally twice to make 16 quarter-square triangles
Cut (2) squares 6 $\frac{3}{4}$ " x 6 $\frac{3}{4}$ ", cut in half diagonally to make 4 half-square triangles (read Step 4 before cutting)
Cut (64) rectangles 2 $\frac{1}{2}$ " x 4 $\frac{1}{2}$ "

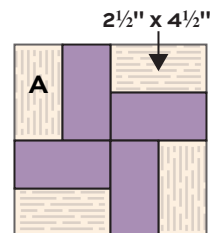
Fabric C Cut (2) top/bottom borders 3 $\frac{1}{2}$ " x 59", cut crosswise and pieced
Cut (2) side borders 3 $\frac{1}{2}$ " x 53", cut crosswise and pieced

2 $\frac{1}{2}$ " Strips Cut (164) rectangles 2 $\frac{1}{2}$ " x 4 $\frac{1}{2}$ " (cut in sets of 4)

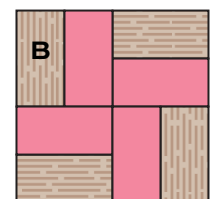
Backing Cut (2) panels 36" x 71", pieced to fit quilt top with overlap on all sides

Making the Quilt

1. Make 3 blocks from each of 13 bright prints, and make 2 blocks from 1 bright print—a total of 41 blocks. Referring to the Block Y diagram, sew a Fabric A rectangle to a bright rectangle. Make 4 pieced units alike. Join the 4 units into a square as shown. Make 25 Block Y's.
2. Repeat step 1 to make 16 Block Z's, using Fabric B rectangles in place of Fabric A.
3. Referring to the Quilt Diagram, arrange Block Y's and Block Z's into 9 diagonal rows, noting that each row begins and ends with a Block Y. Join the blocks into rows. Sew Fabric B quarter-square triangles to ends of rows, turning triangles and orienting the striped print as shown. Join the rows.



Block Y – Make 25



Block Z – Make 16

Flapper Follies Quilt

4. Cut 1 of the Fabric B $6\frac{3}{4}$ " squares diagonally in one direction, and cut the other square diagonally in mirror image (Diagram 1). Sew a Fabric B half-square triangle to each corner of the quilt, noting the direction of the striped print in the corner patches.
5. Sew shorter borders to the sides of the quilt and trim even with the quilt. Sew the longer borders to the top and bottom and trim.

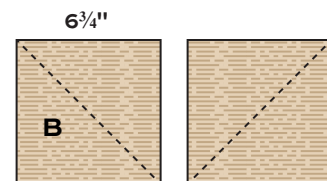
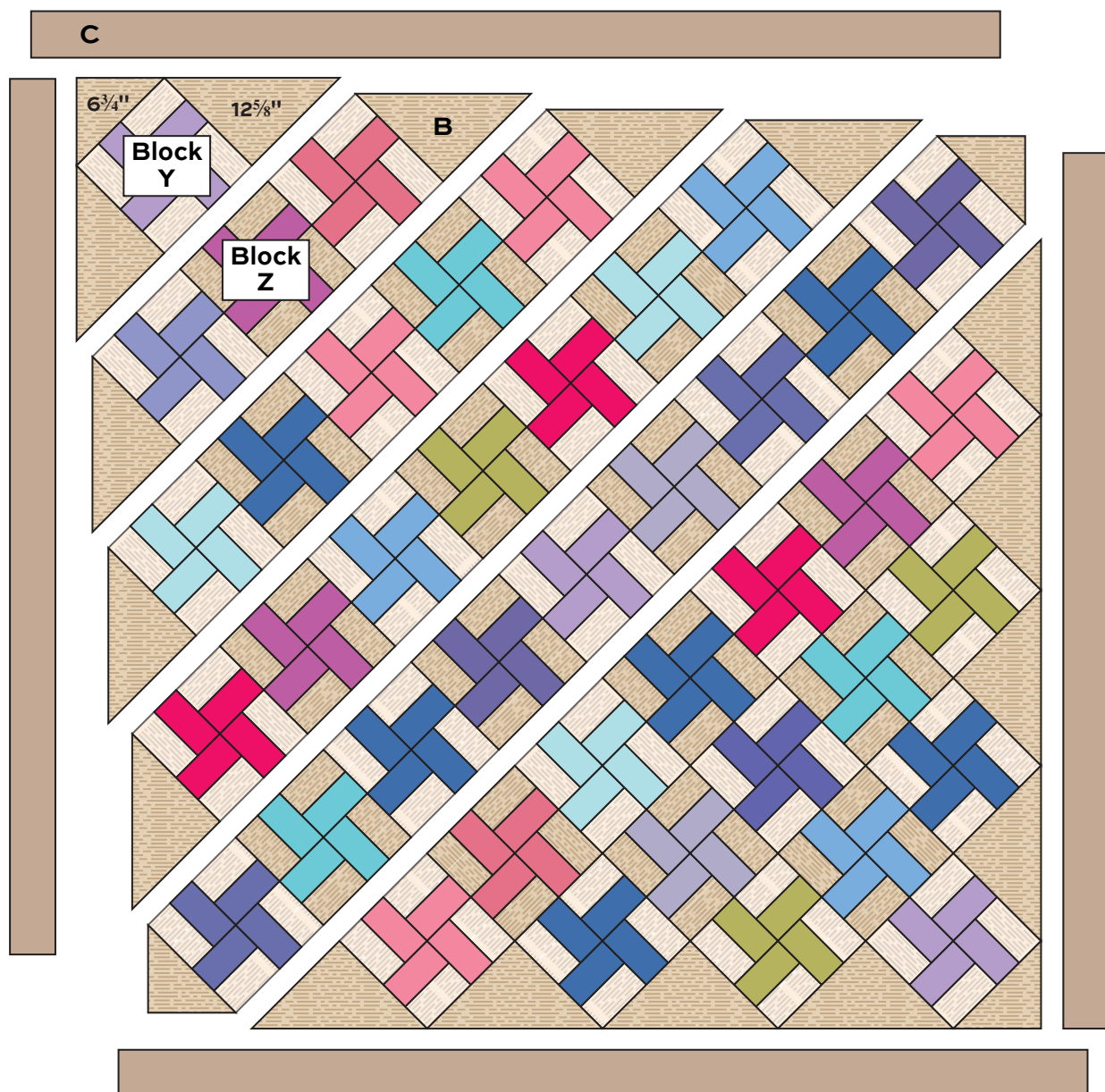


Diagram 1

Finishing the Quilt

6. Layer the quilt with batting and backing and baste. Quilt in the ditch around borders and block patches. Quilt along the lines of the printed words in the Fabric B setting triangles. Bind to finish the quilt.



Quilt Diagram

Downton Abbey® The Lady Rose Collection



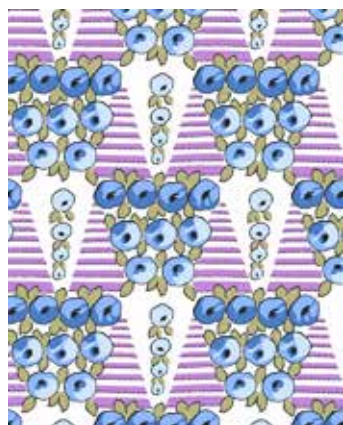
FABRICS BY KATHY HALL



7611-B



7611-E



7612-B



7612-E



7613-B



7613-E



7614-EC



7614-BP



7615-B



7615-E

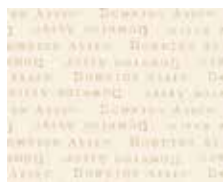


7616-BG

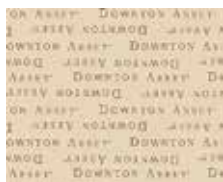


7616-BP

Blend with additional fabrics from Downton Abbey®



7617-L



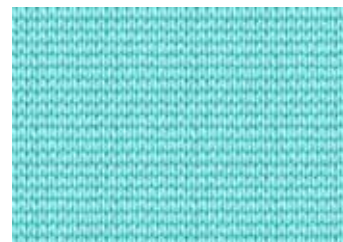
7617-N



7618-N



7616-EC



7616-EG

All fabrics are used in quilt pattern.
Fabrics shown are 25% of actual size.

andover



makower uk
The Henley Studio

Free Pattern Download Available

1384 Broadway New York, NY 10018
Tel. (800) 223-5678 • andoverfabrics.com