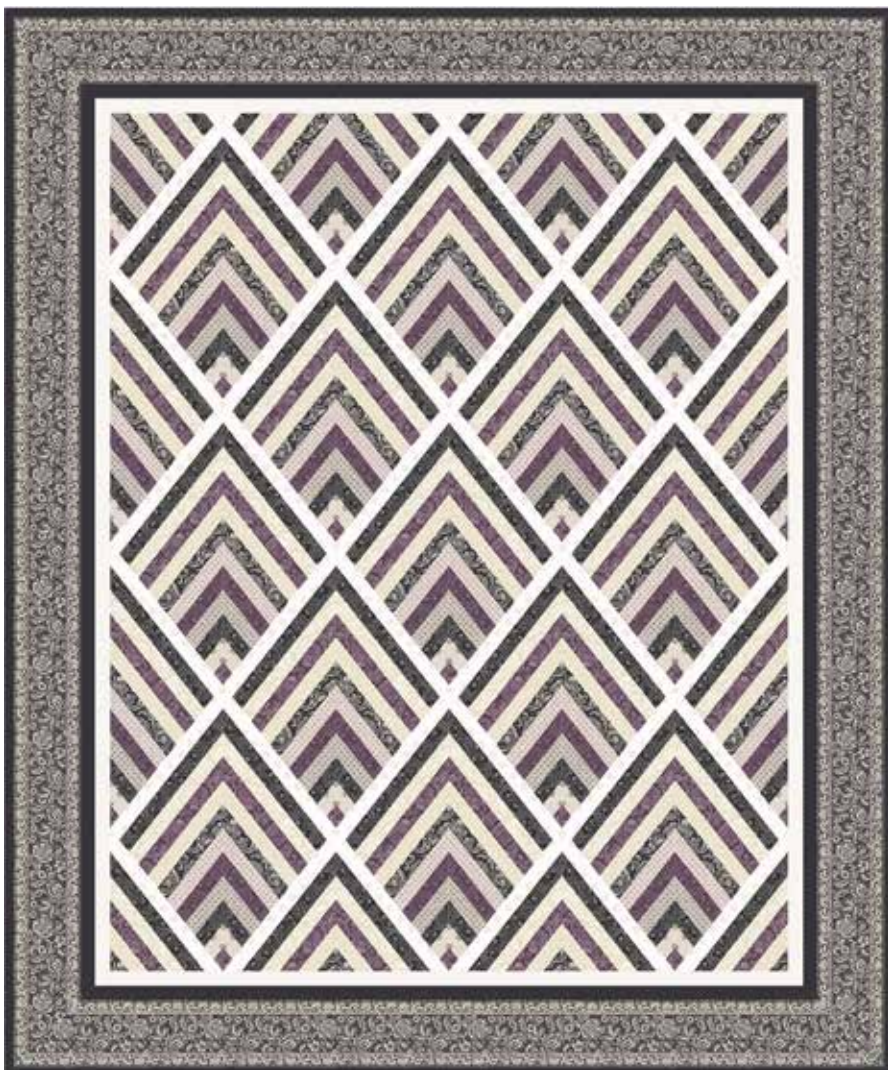


Downton Abbey®

The Dowager Countess

BY KATHY HALL



Chevrons Quilt
Designed by: **Lucy A. Fazely**

Quilt Size: **59" x 71"**

andoverfabrics.com

About Downton Abbey The Dowager Countess

Elegant prints and subtle colors suitable for the Dowager Countess in the beloved PBS series, Downton Abbey, are the focus of this unusual quilt.

Downton™ and Downton Abbey®.
©2014 Carnival Film & Television Limited.
All Rights Reserved.

andover



makower uk
The Henley Studio

Free Pattern Download Available

1384 Broadway New York, NY 10018
Tel. (800) 223-5678 • andoverfabrics.com

8/15/14

Chevrons Quilt

Introducing Andover Fabrics new collection:

DOWNTON ABBEY THE DOWAGER COUNTESS by Kathy Hall

Quilt designed by Lucy A. Fazely



Quilt finishes 59" x 71"

Elegant prints and subtle colors suitable for the Dowager Countess in the beloved PBS series, Downton Abbey, are the focus of this unusual quilt. Strip-pieced bands are cut into elongated triangles for the blocks. If you pay careful attention when marking and cutting the patches, your quilt will be a lovely testament to your quilting skills.

Cutting Directions

Note: Read assembly directions before cutting patches. All measurements are cut sizes and include 1/4" seam allowances. The mitered borders include extra length for insurance. WOF designates the width of fabric from selvedge to selvedge (approximately 42" wide).

Fabrics A, B, F, G, H, I, J, L

From each: Cut (12) strips 1 1/2" x WOF

Fabric C

Cut (24) strips 1 1/2" x WOF

Fabric D

Fussy-cut (2) side borders 6 1/2" x 73 1/2",
cut lengthwise

Fussy-cut (2) top/bottom borders 6 1/2" x 61 1/2",
cut lengthwise

Fabric E

Cut (6) strips 2 1/2" x WOF for binding

Cut (24) strips 1 1/2" x WOF

Fabric K

Cut (2) side borders 1 1/2" x 61 1/2"

Cut (2) t/b borders 1 1/2" x 49 1/2"

Backing

Cut (2) panels 39" x 66", pieced to fit quilt top with overlap on all sides

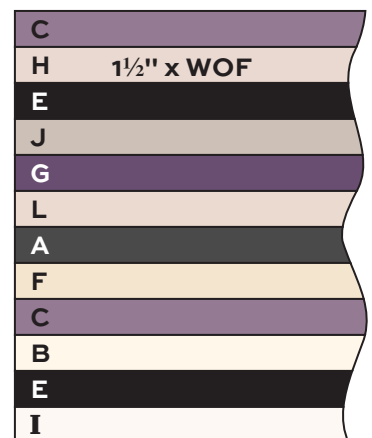
Fabric Requirements

		Yardage	Fabric
Fabric A	blocks	5/8 yard	8110-K
Fabric B	blocks	5/8 yard	8110-L
Fabric C	blocks	1 1/4 yards	8110-P
Fabric D	border	2 1/4 yards	8111-K
*Fabric E	blocks	1 5/8 yards	8112-K
Fabric F	blocks	5/8 yard	8112-L
Fabric G	blocks	5/8 yard	8112-P
Fabric H	blocks	5/8 yard	8113-K
Fabric I	blocks	5/8 yard	8113-L
Fabric J	blocks	5/8 yard	8114-K
Fabric K	border	3/8 yard	8114-L
Fabric L	blocks	5/8 yard	8114-P
Backing		3 7/8 yards	8110-K

*includes binding

Making the Quilt

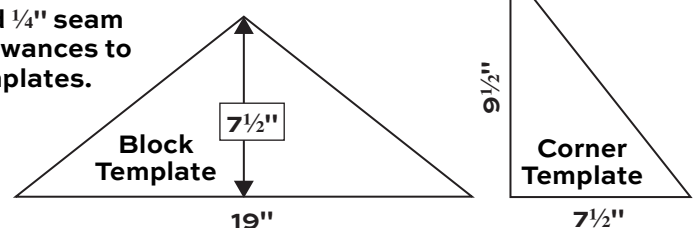
- Referring to the pieced band diagram, join 1 1/2" x WOF strips in the order shown, taking scant 1/4" seams. Press seam allowances in one direction. The band should measure 12 1/2" from raw edge to raw edge. If it does not, adjust your stitching and pressing methods. Make 12 bands all alike. Press seam allowances in 6 of the bands in one direction, following the arrow on Diagram 1. Press the other 6 bands in the opposite direction, following the arrow on Diagram 2.



Pieced Band – Make 12

- Draw a block template on a large piece of stiff paper or acrylic plastic. Add 1/4" seam allowances all around the drawing. Draw a corner template and add 1/4" seam allowances around the drawing. Cut out templates.

Add 1/4" seam allowances to templates.



Chevrons Quilt

3. It is important to follow the diagrams exactly to position the templates on the pieced bands just as shown. If the diagram shows the template resting on the bottom of the band, be sure the correct side is placed along the bottom raw edge of the band. You might want to draw around the templates the correct number of times needed on each band before cutting anything out, using a removable marker such as chalk pencil. Marking the band before cutting will eliminate possible errors in placement.

Referring to Diagram 1, position a block template on a pieced band from Step 1, orienting the template as shown. Draw 3 block templates on the band and cut out. Repeat to cut out a total of 15 #1 patches (3 patches from each of 5 bands).

4. Referring to Diagram 2, position a block template on a pieced band, noting that the template has been rotated as shown. Draw 3 block templates on the band and cut out. Repeat to cut out a total of 15 #2 patches.
5. Sew a patch 1 and a patch 2 together along their long edges to make a block. Make 13. Set the unused patches aside for now.
6. Referring to Diagram 3, orient a corner template on a pieced band and mark around it 3 times to draw 3 #3 patches. Reverse the corner template and mark around it 3 times to draw 3 #4 patches. Once again, you may want to mark the entire band before cutting anything, just in case you need to make adjustments in placement. Once all 6 patches are drawn, cut them out. Hint: If you can't cut all 6 patches out of the band, make an additional band from leftover fabric.
7. Follow Step 6 to mark and cut out 3 #5 patches and 3 #6 patches, paying careful attention to placement of the templates.
8. Sew a #4 patch and a #6 patch together to make a top unit. Make 2. Likewise, join a #3 patch and a #5 patch to make a bottom unit. Make 2. Set the unused patches aside for now.

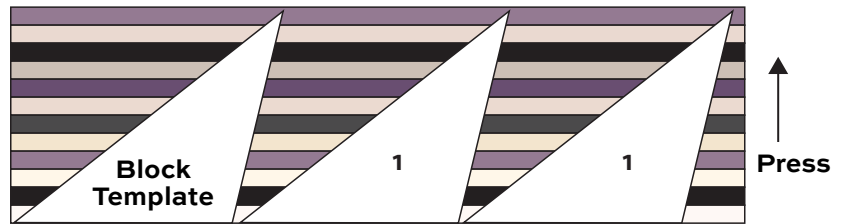


Diagram 1 - Cut 15 #1

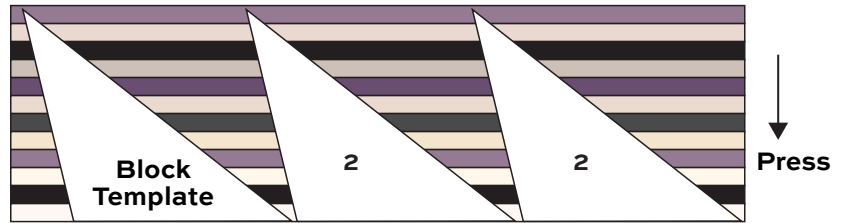
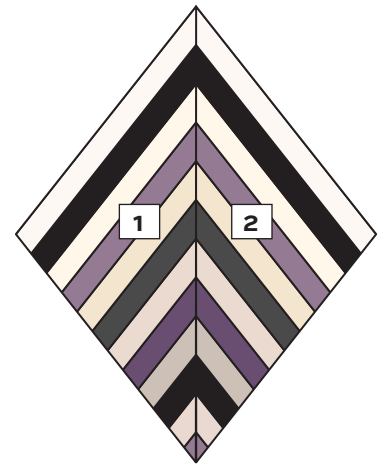


Diagram 2 - Cut 15 #2



Block - Make 13

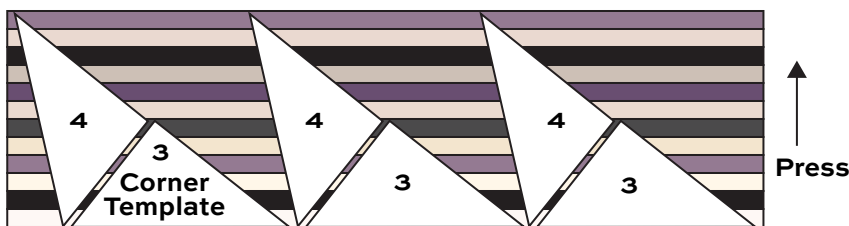


Diagram 3 - Cut 3 of each template

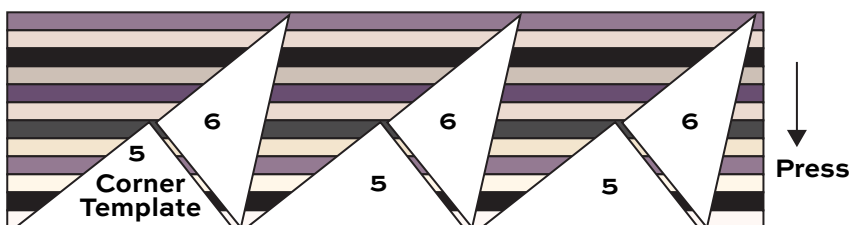
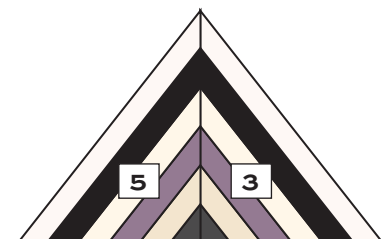


Diagram 4 - Cut 3 of each template



Top Unit - Make 2



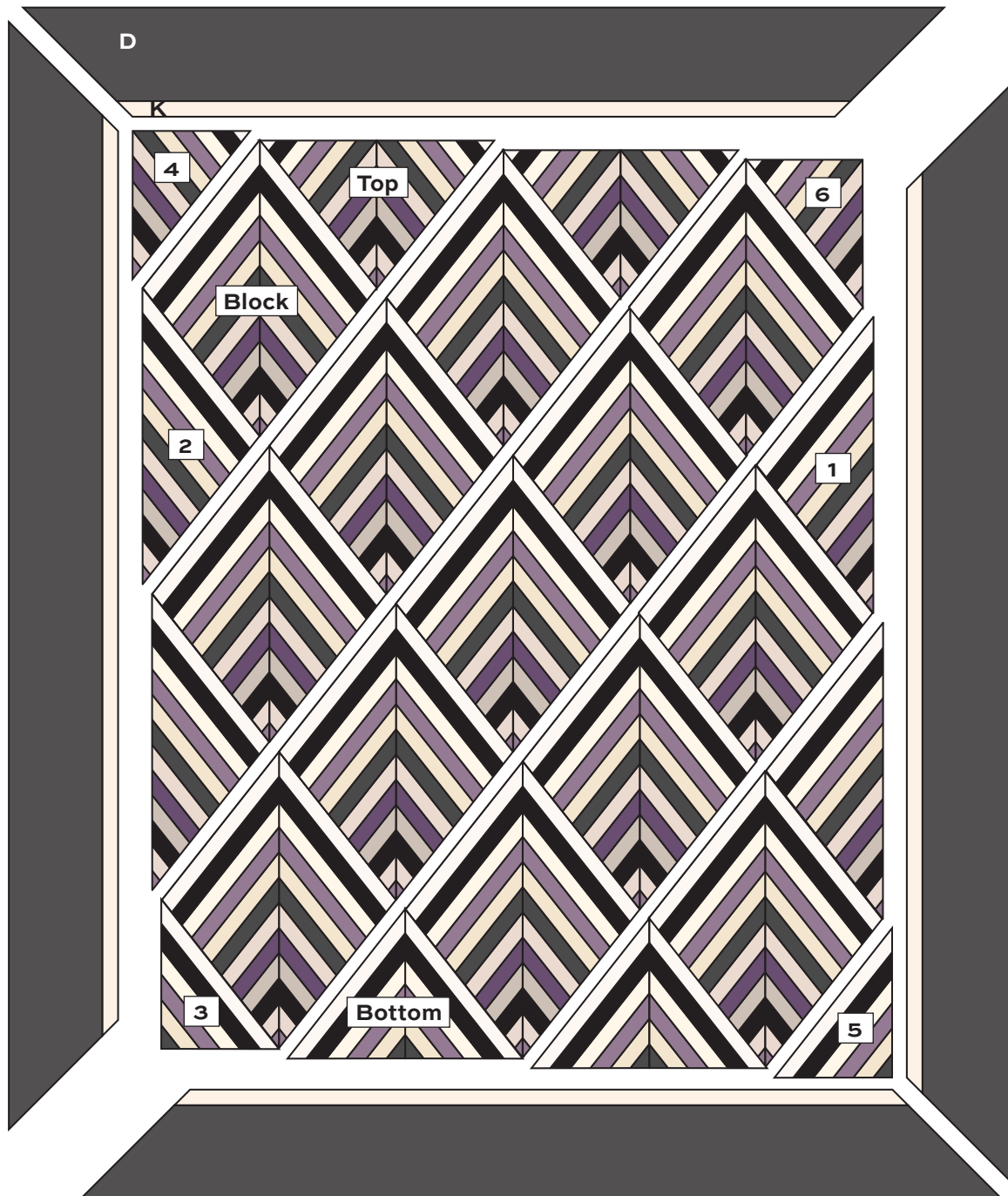
Bottom Unit - Make 2

Chevrons Quilt

- Referring to the Quilt Diagram, position the blocks, top units, bottom units, and the extra #1 and #2 patches into diagonal rows. Join the rows. Sew patches #3-6 in the corners as shown.
- Matching centers, join a long Fabric K border strip to a long Fabric D border strip. Sew to the side of the quilt, starting and stopping stitching $\frac{1}{4}$ " from the quilt's raw edge. Repeat on the other side. Join shorter border strips and sew to the top and bottom. Miter the corners and trim the excess.

Finishing the Quilt

- Layer the quilt with batting and backing and baste. Quilt in the ditch around borders and block patches. Bind to finish the quilt.

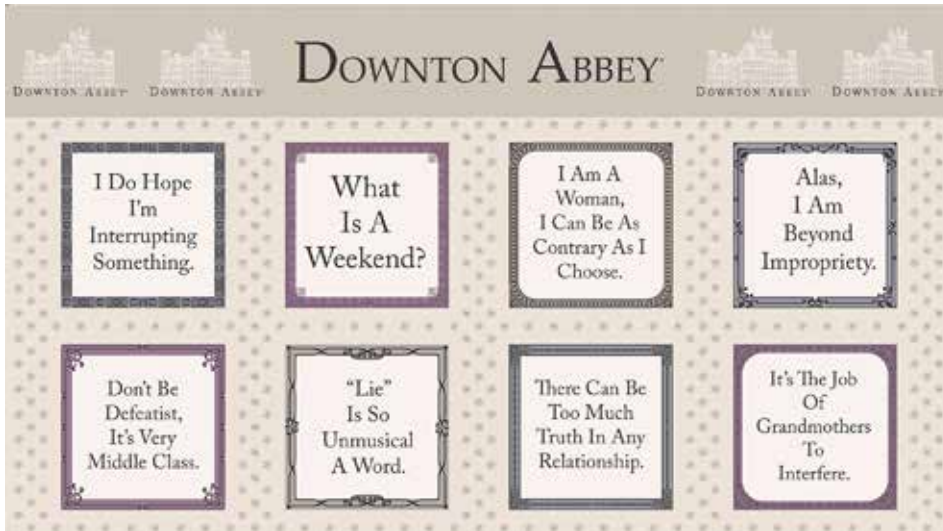


Quilt Diagram

Downton Abbey®

The Dowager Countess

BY KATHY HALL



8109-N*



8111-K*



8111-L



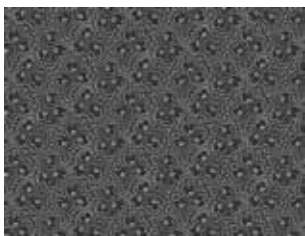
8110-K*



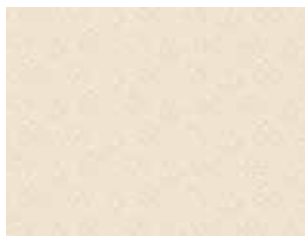
8110-L*



8110-P*



8112-K*



8112-L*



8112-P*



8111-P



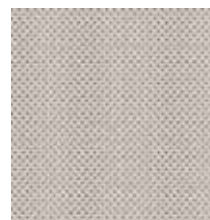
8113-K*



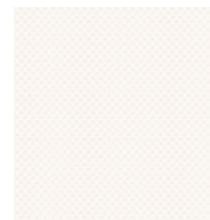
8113-L*



8113-P



8114-K*



8114-L*



8114-P*

*Indicates fabrics used in quilt pattern. Fabrics shown are 20% of actual size.

andover

makower uk
The Henley Studio

Free Pattern Download Available

1384 Broadway New York, NY 10018
Tel. (800) 223-5678 • andoverfabrics.com