

# English Diary

FABRICS BY RENÉE NANNEMAN



Chadwick Gardens  
Quilt Design: **Kate Mitchell**

Quilt Size: 97" x 97"

[andoverfabrics.com](http://andoverfabrics.com)



## About English Diary

The rural heart of England is filled with winding roads leading to small villages in pastoral settings. Each village has a centuries old church and the most charming cottage style homes built of local stones. The inns have lofty beds with floral duvets detailed with embroidered trims. My search for early fabrics with a peaceful feel ready for a soft color palette was complete when I discovered the charming Jacobean main floral for English Diary. — *Renée Nanneman*

andover

makower uk  
*The Henley Studio*

Free Pattern Download Available

1384 Broadway New York, NY 10018  
Tel. (800) 223-5678 • [andoverfabrics.com](http://andoverfabrics.com)

# Chadwick Garden



Introducing Andover Fabrics new collection: **English Diary** by Renée Nanneman

Quilt designed by Kate Mitchell

Quilt finishes 97" x 97"

9 Blocks: 18" x 18"

*Find a place of peace and tranquility when you snuggle under this lovely bed topper. The subtly striped prints combine with soft florals in a composed diagonal setting. The large blocks—only nine of them—are made with quick methods to allow you the time to fill the setting squares and triangles with lovely quilting.*

## Fabric Requirements

		<b>Yardage</b>	<b>Fabric</b>
<b>Fabric A</b>	blocks	1½ yards	7247-R
<b>Fabric B</b>	outer border	3 yards	7248-R
<b>Fabric C</b>	blocks	1½ yards	7249-RB
<b>Fabric D</b>	blocks	1 yard	7251-LO
<b>*Fabric E</b>	inner border	2¼ yards	7251-R
<b>Fabric F</b>	blocks	1¾ yards	3940-V
<b>Fabric G</b>	border, set	1¾ yards	5922-LB
<b>Backing</b>		9 yards	7250-R

\*includes binding

## Cutting Directions

**Note:** Read assembly directions before cutting patches. All measurements are cut sizes and include ¼" seam allowances. Strips for the 3 mitered borders include extra length for insurance. WOF designates the width of fabric from selvedge to selvedge (approximately 42" wide).

**Fabric A** Cut (4) squares 18½" x 18½" for setting squares  
Cut (9) squares 6½" x 6½" for block centers

**Fabric B** Cut (4) borders 8½" x 100"  
(read Step 1 before cutting)

**Fabric C** Cut (36) rectangles 3½" x 6½"  
Cut (72) squares 3½" x 3½"

**Fabric D** Cut (36) squares 3⅞" x 3⅞" for HST  
Cut (36) squares 3½" x 3½"

**Fabric E** Cut (4) borders 1½" x 80", cut crosswise and pieced  
Cut (11) strips 2½" x WOF for binding  
Cut (72) squares 3½" x 3½"

**Fabric F** Cut (36) rectangles 3½" x 6½"  
Cut (36) squares 3⅞" x 3⅞" for HST  
Cut (36) squares 3½" x 3½"

**Fabric G** Cut (4) borders 1½" x 82", cut crosswise  
Cut (2) squares 27" x 27", cut in half diagonally twice to make 8 quarter-square setting triangles (cut over-sized for trimming)  
Cut (2) squares 14" x 14", cut in half diagonally to make 4 half-square corner triangles (cut over-sized for trimming)

**Backing** Cut (3) panels 35" x 105", pieced to fit quilt top with overlap on all sides

## Making and Assembling the Quilt

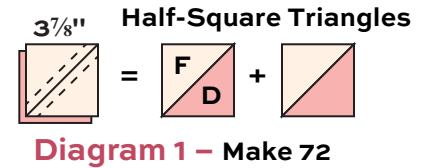
1. Yardage is sufficient to cut Fabric B border strips either crosswise or lengthwise, depending on the orientation you want the striped print in the outer border. To have the print as shown in the quilt photo, cut 12 strips 8½" x WOF and piece them end to end to make 4 borders the length listed.

**Hint:** To hide the seams in the striped border, place 2 WOF border strips right sides together, aligning the print on both. At one end, pin baste the layers together through the middle of one of the printed stripes, and open up the strips to be certain that the print is continuous. Once you like what you see, stitch the 2 borders together. Trim to leave ¼" seam allowance. Stitch a third border to the end in the same manner. Repeat to make 4 borders like this.

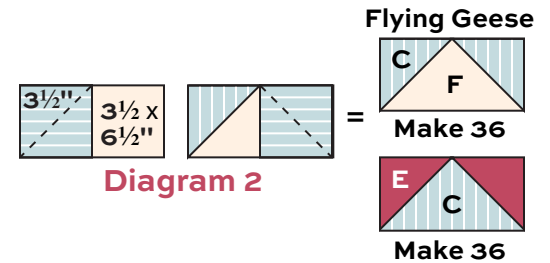
The narrow Fabric E and Fabric G borders are cut crosswise and pieced. **Note:** All border lengths include extra to allow for mitered corners.

# Chadwick Garden Quilt

2. The blocks use half-square triangles (HST) that finish 3" square. Use your favorite method to make HST, or follow these directions. Draw a diagonal line on the wrong side of each Fabric F  $3\frac{7}{8}$ " square (Diagram 1). Place a marked square on a Fabric D square, right sides together. Sew  $\frac{1}{4}$ " seam on each side of the marked line; cut apart on the marked line. Press open to make pieced HST. Make 72 total HST.

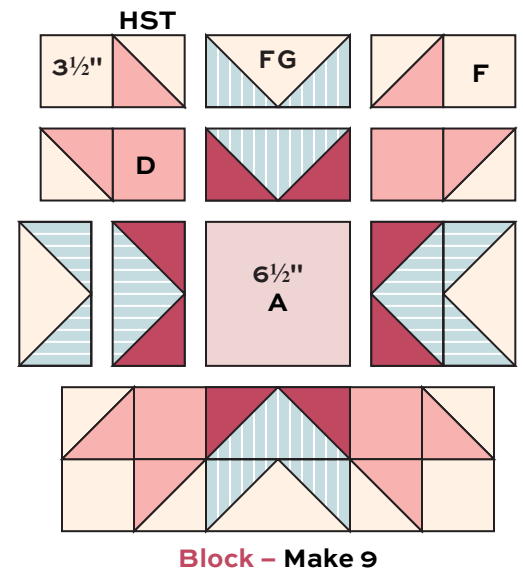


3. To make the Flying Geese units for the blocks, draw a diagonal line on the wrong side of each Fabric C  $3\frac{1}{2}$ " square. Place a marked square on one end of a Fabric F  $3\frac{1}{2}$ " x  $6\frac{1}{2}$ " rectangle, right sides together, noting orientation of the stripe. Sew on the marked line; trim away and discard excess fabric (Diagram 2). Press open. Repeat this process on the opposite end of the rectangle, again noting orientation of the stripe. Make 36 Flying Geese units like this.



4. Repeat the directions in Step 3 to make 36 Flying Geese units with Fabric E squares and Fabric C rectangles.

5. When joining units, pay careful attention to their placement and rotation so your block will look like the one shown. Referring to the Block diagram, join 2 HST, 1 Flying Geese unit from Step 3, and 2 Fabric F  $3\frac{1}{2}$ " squares to make the top row. Repeat to make the bottom row. Hint: Press seam allowances in opposite directions in alternating rows to aid in piecing. Join 2 HST, 1 Flying Geese unit from Step 4, and 2 Fabric D  $3\frac{1}{2}$ " squares to make the second row of the block. Repeat to make the fourth row. Join 2 of each Flying Geese unit with a Fabric A  $6\frac{1}{2}$ " square to make the middle block row. Join the rows in the order shown to make a block. Make 9 blocks total.



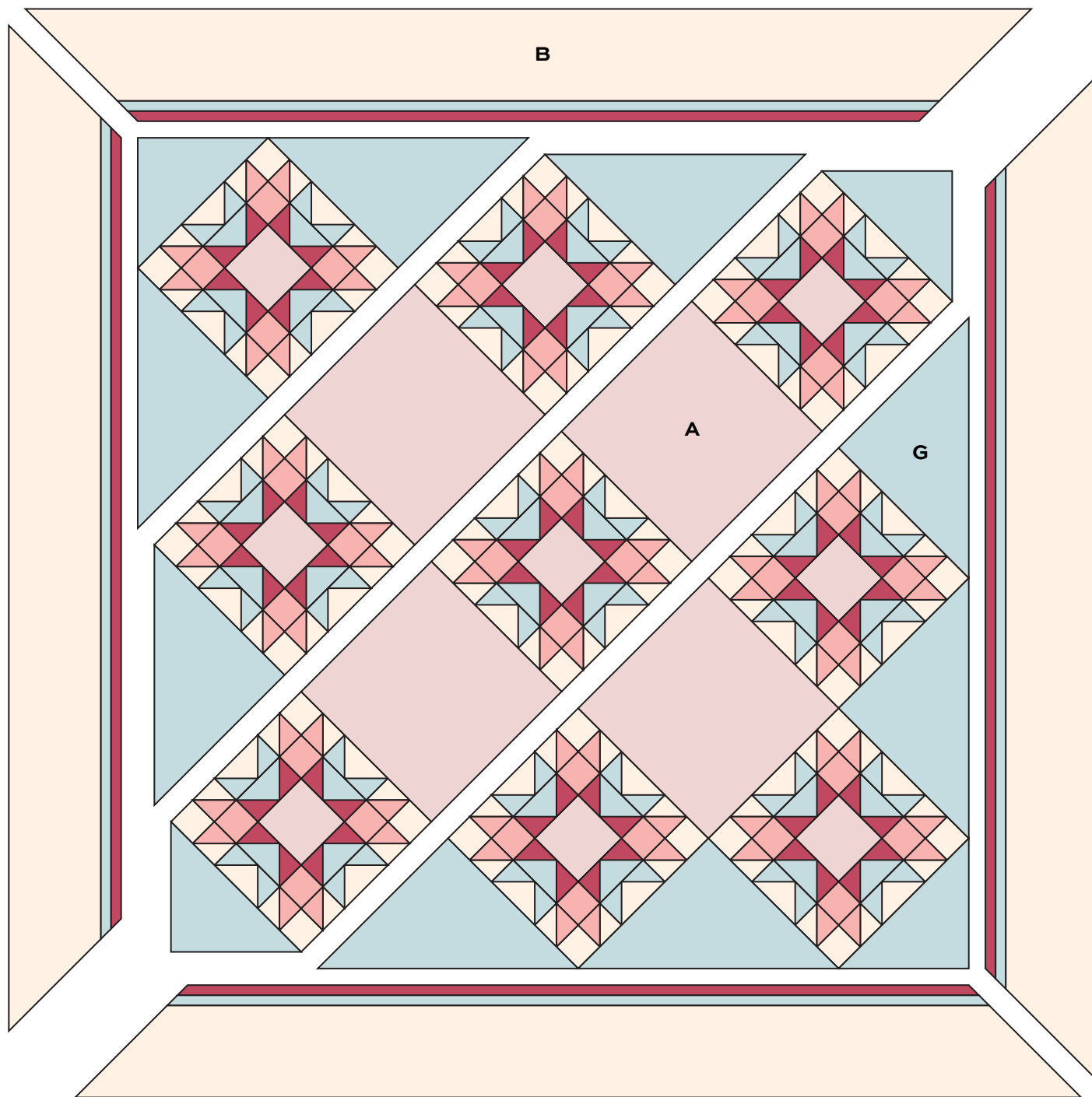
6. Referring to the Quilt Diagram, join blocks, large Fabric A squares, and Fabric G quarter-square setting triangles into diagonal rows. Join the rows. Sew Fabric G half-square triangles to the corners. Trim the quilt square, leaving a generous  $\frac{1}{4}$ " seam allowance beyond the points of the blocks.

7. The mitered border corners are easier to stitch if the 3 border strips are sewn together first. Matching centers, sew a Fabric G border between a Fabric E and a Fabric B border strip. Press seams toward the outer border. Repeat to make 4 border units like this. Sew the units to the sides of the quilt, starting and stopping stitching  $\frac{1}{4}$ " from the quilt's corners. Miter the corners and trim the excess, leaving a generous  $\frac{1}{4}$ " seam allowance. Press the seams open.

## Finishing the Quilt

8. Layer the quilt with batting and backing and baste. Quilt in the ditch around borders and block patches. Quilt motifs of your choice in the large squares and triangles. Bind to finish the quilt.

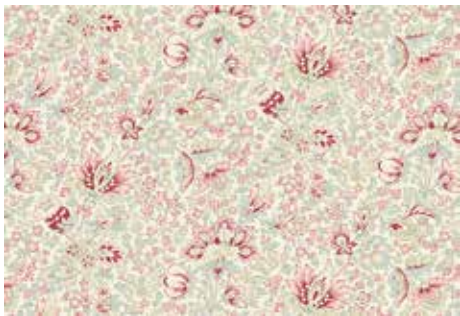
# Chadwick Garden Quilt



**Quilt Assembly Diagram**

# English Diary

FABRICS BY RENÉE NANNEMAN



7247-R\*



7248-R\*



7250-R\*

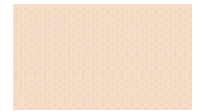
Blend with fabrics from **Itsy Bits** by Renée Nanneman



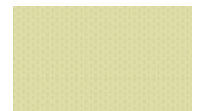
3940-V\*



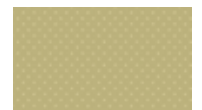
3945-V



3947-E



3947-V



4064-N2



4263-N



5922-LB\*



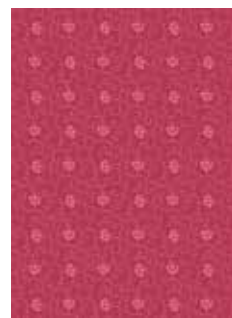
5922-NL



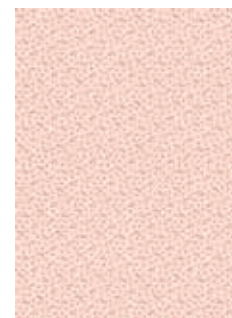
7249-R



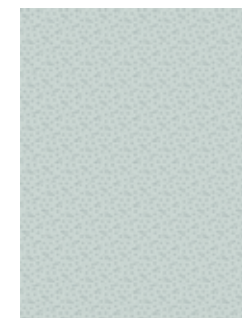
7249-RB\*



7251-R\*



7252-R



7252-RB



7247-L



7248-L



7250-L



7249-LG



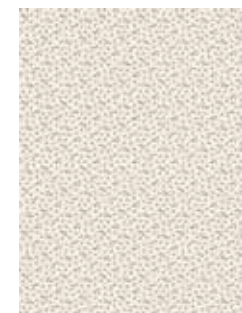
7249-LN



7251-LN



7251-LO\*



7252-L

\*Indicates fabrics used in quilt pattern. Fabrics shown are 15% of actual size.

andover



makower uk  
*The Henley Studio*

Free Pattern Download Available

1384 Broadway New York, NY 10018  
Tel. (800) 223-5678 • andoverfabrics.com