

FAIRMOUNT PARK



Fabrics by
**Lonni
Rossi**



makower uk[®]

1384 Broadway
New York, NY 10018
(800) 223-5678

www.andoverfabrics.com

Garden Wall Hanging
designed by Lonni Rossi
Quilt size: 25" x 65"

Fairmount Park • Garden Wall Hanging

Introducing Andover Fabrics new collection: Fairmount Park by Lonni Rossi

Quilt designed by Lonni Rossi

Gorgeous leafy fabrics and a large-scale Queen Anne's lace novelty print are the focus of attention in this "skinny quilt." The quilt would also make a stunning table runner. The painless fused patches add a striking design element to the five uncomplicated pieced sections.

Quilt finishes 25" x 65"

Fabric Requirements

		Yardage	Fabric
Fabric A	piecing	3/8 yard	6005-MCL
Fabric B	piecing	3/8 yard	6005-MK
Fabric C	piecing	1/2 yard	6006-MC
Fabric D	piecing	1/2 yard	6006-MN
Fabric E	piecing, appliqué	1/4 yard	6008-MC
Fabric F	piecing, appliqué	1/2 yard	6009-MKN
Fabric G	piecing	3/8 yard	6010-MCL
Fabric H	appliqué	3/8 yard	6010-MN
Fabric I	binding	1/2 yard	5468-N1
Backing	backing	2 yards	6009-MC

Cutting Directions

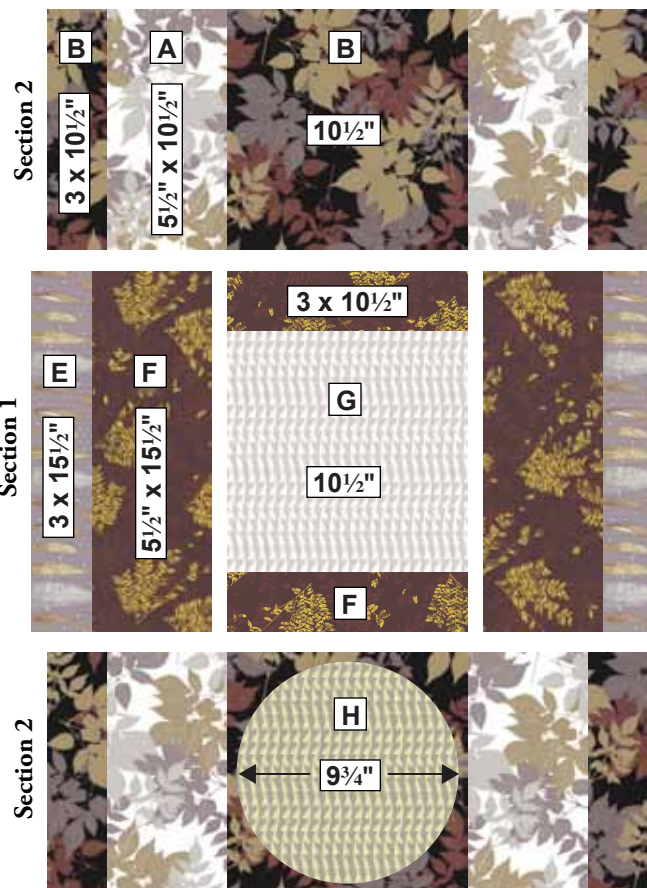
Note: Read assembly directions before cutting patches.

All measurements are cut sizes and include 1/4" seam allowances. WOF designates the width of fabric from selvedge to selvedge (approximately 42" wide).

- Fabric A** Cut (4) rectangles 5 1/2" x 10 1/2"
- Fabric B** Cut (2) squares 10 1/2" x 10 1/2"
Cut (4) rectangles 3" x 10 1/2"
- Fabric C** Fussy-cut (8) rectangles 3" x 15 1/2"
- Fabric D** Fussy-cut (8) rectangles 3" x 15 1/2"
- Fabric E** Fussy-cut (1) strip 3" x 36" (to be trimmed later)
Fussy-cut (2) rectangles 3" x 15 1/2"
- Fabric F** Cut (4) rectangles 5 1/2" x 15 1/2"
Cut (2) rectangles 3" x 10 1/2"
Cut (1) square 5 1/2" x 5 1/2" (to be trimmed later)
- Fabric G** Cut (1) square 10 1/2" x 10 1/2"
- Fabric H** Cut (2) squares 10 1/2" x 10 1/2"
- Fabric I** Cut (5) strips 2 1/2" x WOF for binding
- Backing** Cut (2) panels 33" x 37", pieced horizontally to fit quilt top with overlap

Making and Assembling the Quilt

- The quilt is made in 5 horizontal pieced sections. Appliqué patches are added with fusing. Fussy-cut the Fabric C and D rectangles crosswise from both selvedge edges so that the patches contain stems as well as flowers. Fussy-cut the Fabric E strip and rectangles crosswise, centering leaves as shown in the quilt photograph.
- Refer to the Center Diagram. To make the center Section 1, sew 3" x 10 1/2" Fabric F rectangles to the top and bottom of the Fabric G square, orienting the square as shown so the print is vertical. Press seam allowances open. Sew Fabric F 5 1/2" x 15 1/2" rectangles and Fabric E 3" x 15 1/2" rectangles to the sides in the order shown. Section 1 should measure 25 1/2" wide and 15 1/2" long. Set aside.



Center Diagram

Fairmount Park • Garden Wall Hanging

- To make a Section 2, join 2 Fabric B rectangles, 2 Fabric A rectangles, and 1 Fabric B square in the order shown. Press seam allowances open. Repeat to make a second Section 2.
- Follow manufacturer's directions for lightweight fusible webbing. On the paper-side of fusible webbing draw (2) $9\frac{3}{4}$ "-diameter circles. Roughly cut the circles out and press to the wrong side of Fabric H squares. Cut the fabric circles along the lines. Remove the paper backing. Position the circles on the center of the Fabric B squares as shown in the bottom Section 2 diagram. Be certain that the Fabric H print is vertical. Press the circles in place. The sections should measure $25\frac{1}{2}$ " wide and $10\frac{1}{2}$ " long. Set aside.
- Sew Section 2s to the top and bottom of Section 1. Press seam allowances open.
- Refer to the Quilt Diagram for the remaining steps. Press a $3" \times 36"$ piece of fusible web to the wrong side of the Fabric E strip. Trim to $2\frac{1}{2}"$ wide. Remove the paper backing. Center the strip through the middle of the quilt across the 3 sections. Trim the raw ends of the strip even with the quilt's raw edges. The ends will get caught in the seam. Press in place.
- Press a $5\frac{1}{2}"$ square of fusible web to the wrong side of the Fabric F $5\frac{1}{2}"$ square. Trim to $5"$ square. Remove the paper backing. Center and fuse the square on top of the Fabric E strip in the middle of the Fabric G square as shown in the quilt photograph.
- To make a Section 3, join 4 Fabric C and 4 Fabric D $3" \times 15\frac{1}{2}"$ rectangles with 1 Fabric F $5\frac{1}{2}" \times 15\frac{1}{2}"$ rectangle in the order shown, paying attention to the orientation of the printed motifs. Repeat to make a second Section 3 for the bottom. (Note that it is a mirror image of the top Section 3.) Press seam allowances open. The sections should measure $25\frac{1}{2}"$ wide and $15\frac{1}{2}"$ long.
- Sew Section 3s to the top and bottom of the quilt.

Finishing the Quilt

- Layer the quilt with batting and backing and baste. Quilt in the ditch around pieced patches. Free-motion quilt over the edges of the appliqué. Quilt wavy lines in Fabric H circles and around the printed leaves and other printed motifs as desired. Bind to finish the quilt.



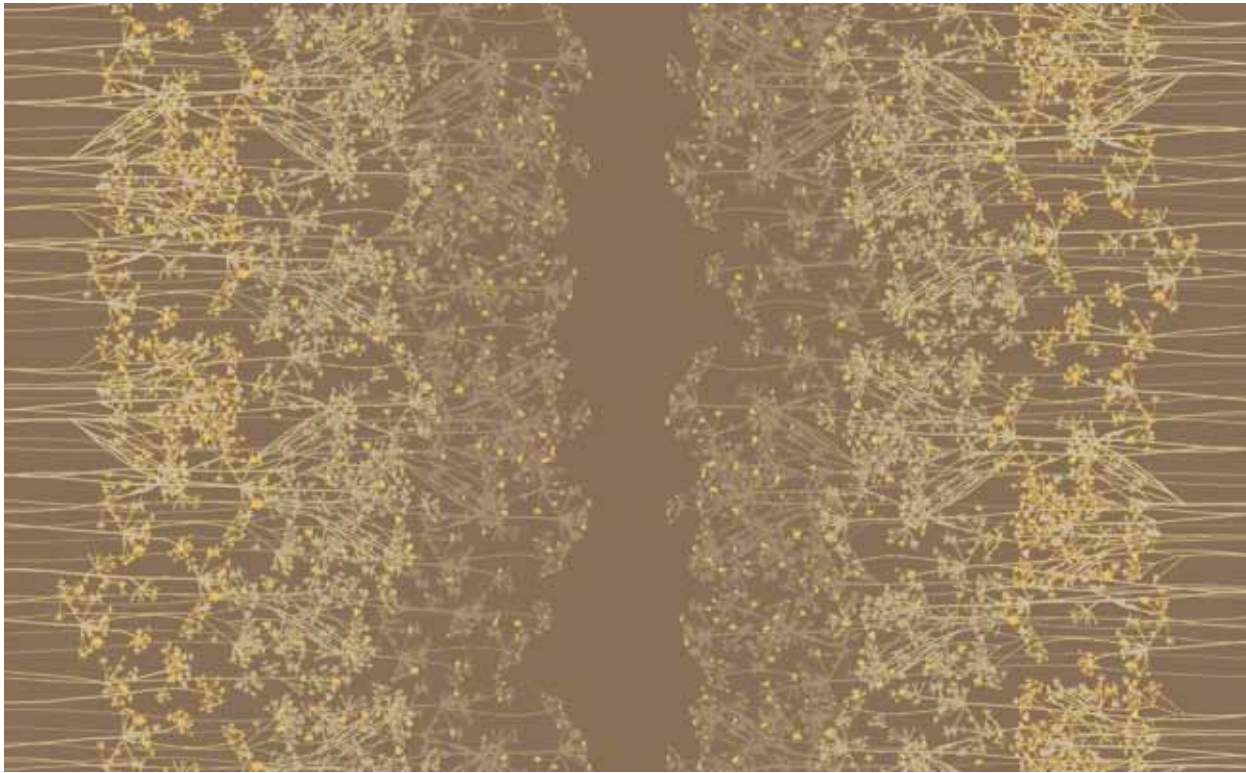
Quilt Diagram

Fairmount Park

by Lonni Rossi



makower uk®



6006-MN*

*Additional
fabrics by
Lonni Rossi*
Raindrops



5468-C4



5468-LN



5468-LT



5468-LG



6005-MNL



6007-MNG



6008-MN



6009-MNG



6010-MN*



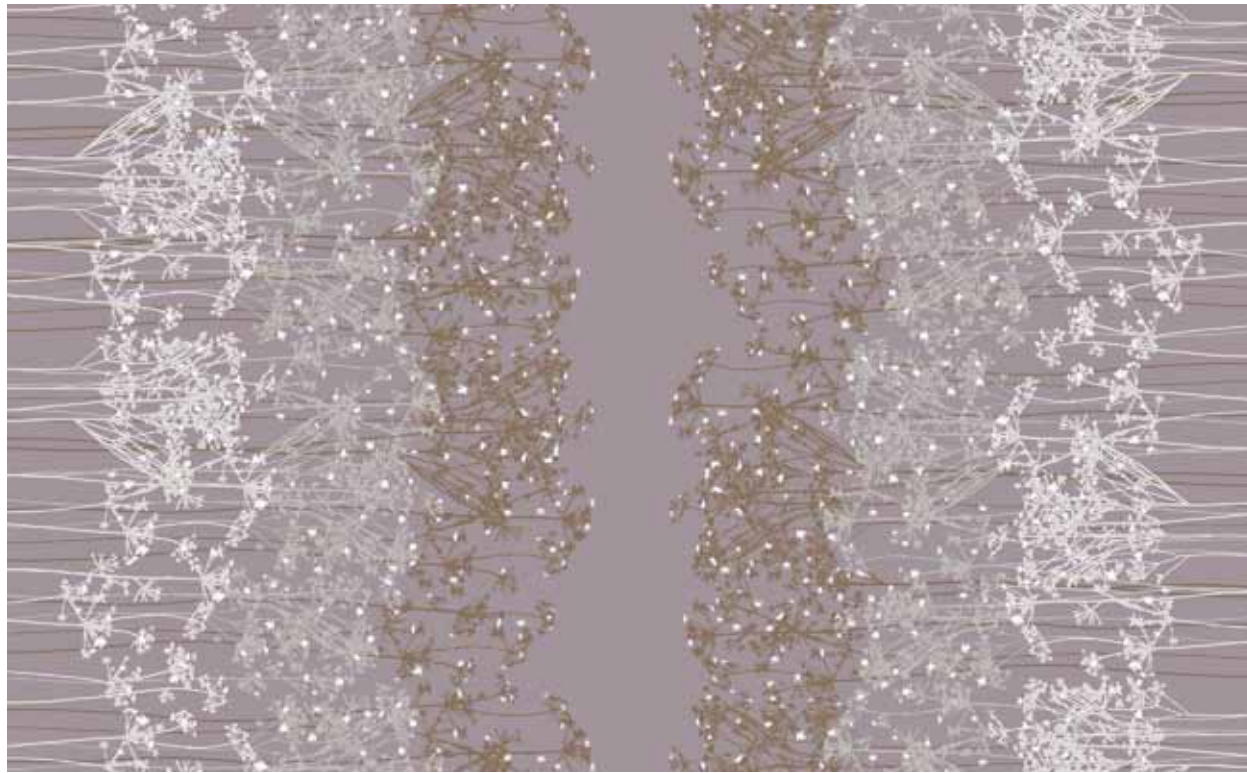
6010-MNT

Fairmount Park

by Lonni Rossi



makower uk[®]

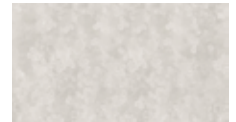


6006-MC*

*Additional
 fabrics by
 Lonni Rossi*
Raindrops



5468-C1



5468-C5



5468-C



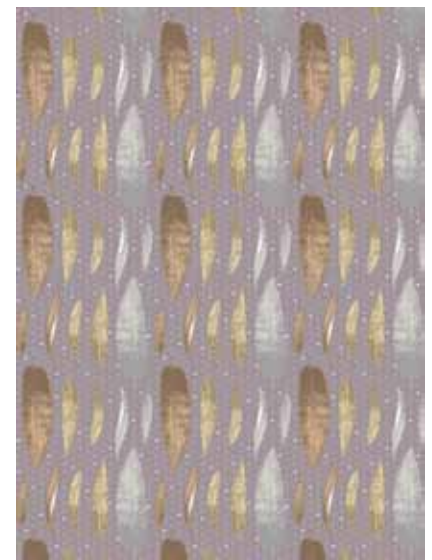
5468-N1*



6005-MCL*



6007-MC



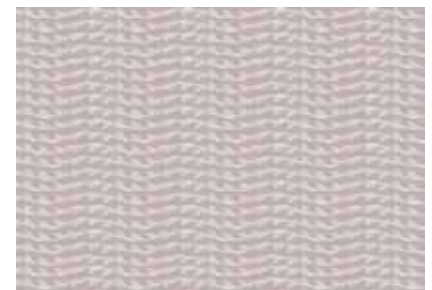
6008-MC*



6009-MC



6010-MCL*



6010-MC

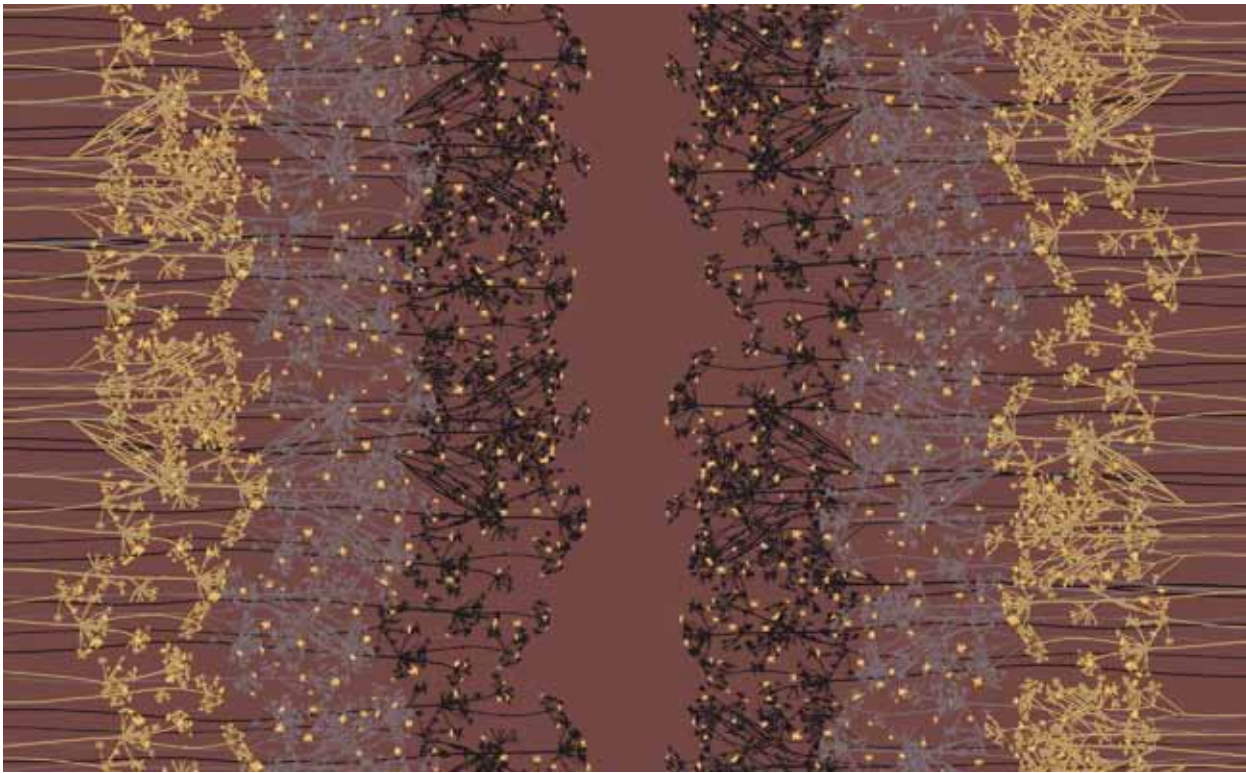
*Indicates fabric used in quilt pattern. Fabrics shown are 15% of actual size.

Fairmount Park

by Lonni Rossi



makower uk®



6006-MKN

*Additional
fabrics by
Lonni Rossi*
Raindrops



5468-N3



5468-O3



5468-DK



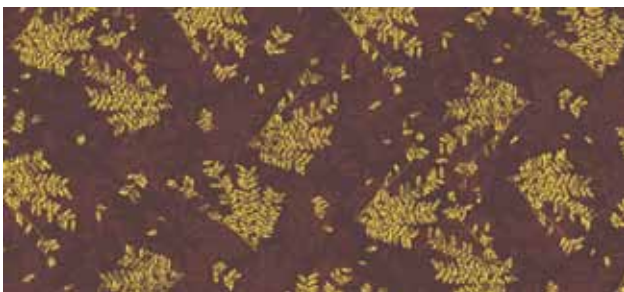
6005-MK*



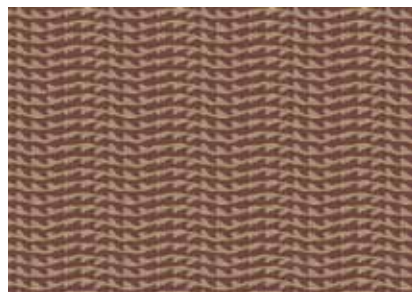
6007-MK



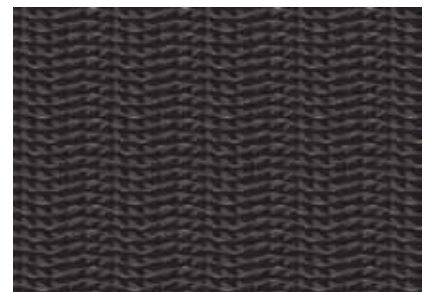
6008-MK



6009-MKN*



6010-MKN



6010-MK