

French Twist

Fabrics by
Lonni Rossi



Quilt designed by
Janet Houts
Quilt size: 66" x 84"



makower uk

1384 Broadway
New York, NY 10018
(800) 223-5678

www.andoverfabrics.com

French Twist Quilt

Introducing Andover Fabrics new collection: French Twist by Lonni Rossi
Quilt designed by Janet Houts

Quilt finishes 66" x 84"
14 Blocks: 9" x 9"

What could be more elegant than gracefully swirling feathers and paisleys? Choose one of three unusual colorways to make a quilt that is sure to please. The pieced blocks require template cutting, so the pattern is for experienced quilters or beginners with knowledge of template piecing. Also challenging are the fussy-cut mitered corners in the pieced border section. Careful attention to the details will pay off with a stunning quilt to be proud of.

Fabric Requirements

		Yardage	Purple	Peach	Blue
Fabric A	blocks	3/8 yard	5732-MP	5732-MC	5732-MN
Fabric B	blocks, binding	7/8 yard	5468-P1	5468-O1	5468-T
Fabric C	blocks	3/4 yard	5733-ML	5733-MO	5733-MV
Fabric D	blocks	7/8 yard	5733-MLN	5733-MC	5733-MN
Fabric E	outer border	2 1/2 yards	5731-MP	5731-MO	5731-MV
Fabric F	pieced border	*3 yards	5730-MP	5730-MC	5730-MN
Fabric G	narrow border	3/8 yard	5732-MLN	5732-MO	5732-MV
Backing		5 1/4 yards	5730-MLP	5730-ML	5730-MV

*Extra yardage is given to allow for fussy-cutting.

Cutting Directions

Note: All measurements are cut sizes and include 1/4" seam allowances. Borders are cut the exact lengths required plus 1/4" seam allowances. Mitered patches include extra length for insurance. WOF designates the width of fabric from selvedge to selvedge (approximately 42" wide).

Fabric A Cut (14) squares 4 1/4" x 4 1/4"

Fabric B Cut (8) strips 2 1/2" x WOF for binding
Cut (14) squares 2 3/4" x 2 3/4", cut in half diagonally twice to make 56 quarter-square triangles.
Cut (56) squares 1 5/8" x 1 5/8"

Fabric C Cut (112) star points (template)

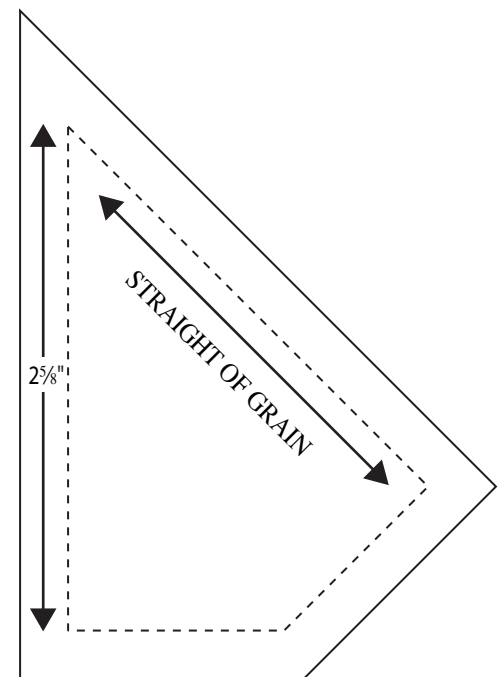
Fabric D Cut (14) squares 5" x 5", cut in half diagonally twice to make 56 quarter-square triangles.
Cut (56) squares 3 1/8" x 3 1/8"

Fabric E Cut (4) borders 9 1/2" x 66 1/2", cut lengthwise
Cut (7) squares 9 1/2" x 9 1/2"

Fabric F Fussy-cut (8) rectangles 9 1/2" x 20"
(see Step 7 before cutting)
Fussy-cut (2) squares 9 1/2" x 9 1/2"

Fabric G Cut (6) strips 2" x WOF", pieced to make the following:
(2) borders 2" x 63 1/2"
(2) borders 2" x 48 1/2"

Backing Cut (2) panels 37" x 92", pieced to fit quilt top with overlap on all sides



Template

French Twist Quilt

Making and Assembling the Quilt

Hint: Because of the complexity of the pieced blocks, make a test block to be certain that your sewing and pressing techniques result in the correct size block. Be sure to take “scant” $\frac{1}{4}$ " seam allowances and press after each step.

1. **Blocks:** The center of the block is made with quick stitch-and-flip piecing methods. Draw a line on the wrong side of each Fabric B $1\frac{5}{8}$ " square. Referring to Diagram 1, place a marked square on a Fabric A $4\frac{1}{4}$ " square, right sides together, aligning raw edges at one corner. Stitch on drawn line; trim away and discard excess fabric. Press open. Repeat on each corner of the square, watching orientation of the sewing line (Diagram 1). Make 14 center units like this.
2. Referring to Diagram 2, cut each Fabric B $2\frac{3}{4}$ " square in half diagonally twice to make 4 quarter-square triangles. Sew the short edge of a triangle to the short edge of a Fabric C star point, noting orientation. Press the seam allowance toward the darker fabric. Make 56 units like this.
3. Referring to Diagram 3, sew a Fabric D quarter-square triangle to one long side of a star point, noting orientation. Press the seam allowance toward the gray patch. Make 56 units like this.
4. Join the two different star point units as shown in Diagram 4. The rectangle should measure $3\frac{1}{8}$ " x $4\frac{1}{4}$ ". If it does not, adjust your stitching lines and pressing techniques. Make 56 pieced rectangles like this.
5. Referring to the Block Diagram, join the units from Step 4 with Fabric D squares and a center unit into 3 rows as shown. Press seam allowances toward Fabric D and the center unit. Join the rows. The block should measure $9\frac{1}{2}$ " from edge to edge. Make 14 blocks.
6. Referring to the Quilt Diagram, join 2 blocks and 1 Fabric E $9\frac{1}{2}$ " square to make Row 1. Press seam allowances toward the Fabric E square. Make 3 rows like this. Join 2 Fabric E squares and 1 block to make Row 2. Make 2 rows like this. Join the rows. Press seam allowances in one direction.
7. **Pieced Border:** Fabric F has 3 complete “stripes” of motifs that run lengthwise. It is easiest to cut the fabric into 3 strips each $9\frac{1}{2}$ " wide and 3 yards long, and then cut the patches needed.

Align the $4\frac{3}{4}$ " mark on a long acrylic ruler with the very middle of the center Fabric F stripe. Cut along the edge of the ruler, shifting it as needed to cut the entire 3-yard length. Align the $9\frac{1}{2}$ " mark on the ruler with the cut edge, and cut a strip that is $9\frac{1}{2}$ " wide. Repeat this with the stripes on either side of the center to obtain 3 long strips. Be sure that the motifs are centered the same within each strip.

Look at the quilt photograph and Diagram 5 to help you decide where to cut the patches from Fabric F strips. If you wish to see what the mitered corner will look like once it's stitched, place a large mirror at a 45-degree angle along one of the strips, moving it until you find an image that you like or that's similar to the image in the quilt. Mark the place where the mirror touches the edge of the strip with a pin. This is where the miter begins.

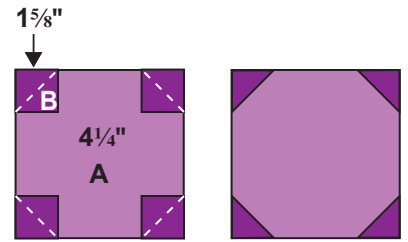


Diagram 1 Make 14

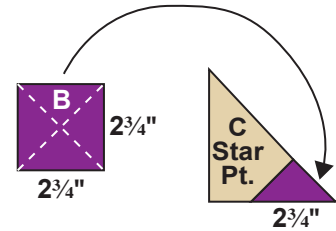


Diagram 2 Make 56

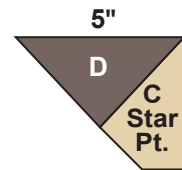


Diagram 3 Make 56

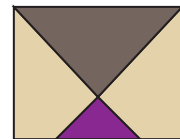
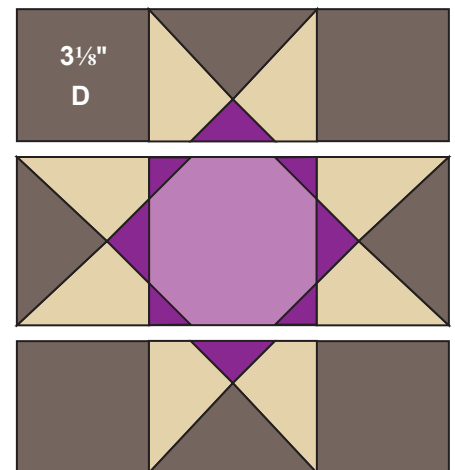


Diagram 4 Make 56



Block Make 14

French Twist Quilt

From the pin, measure and mark $9\frac{1}{4}$ " toward the end that will be sewn to the block. Measure and mark $10\frac{3}{4}$ " up from the pin in the other direction as shown. Cut a rectangle that is $9\frac{1}{2}$ " x 20". Remove the pin. Note that the portion of the rectangle that will be the miter is cut slightly longer than required for insurance. Mark the end of the rectangle that is to be sewn to the block so you don't get confused later. Do not cut the miter at this time.

Position this rectangle on top of the long $9\frac{1}{2}$ "-wide fabric strip, right sides together. Align the motifs and cut a second rectangle with the same design. Repeat this to cut a total of 8 matching $9\frac{1}{2}$ " x 20" rectangles from the 3 strips.

From the remainder of the fabric, fussy-cut 2 Fabric F $9\frac{1}{2}$ " squares alike, referring to the quilt photograph for placement.

8. Refer to the Quilt Diagram and quilt photograph. Although Fabric F patches are shown with cut miters in the diagram, your patches have not been cut yet. To make the top pieced border, sew a Fabric F rectangle to opposite sides of a block, noting orientation of the Fabric F print. Sew the pieced border to the top, starting and stopping stitching $\frac{1}{4}$ " from the corner of the quilt to allow for mitering the corners. Repeat for the bottom.

Sew 2 blocks, 1 Fabric F square, and 2 Fabric F 20"-long patches in the order shown. Sew to the side, again starting and stopping stitching $\frac{1}{4}$ " from the corner of the quilt. Repeat for the other side.

Miter the corners, being careful to match the printed motifs where the patches meet. Trim the excess from the seam, and press the seam allowance open on the back.

9. Sew long Fabric G borders to the sides and short borders to the top. Sew Fabric E borders to the quilt in the same order.

Finishing the Quilt

10. Layer the quilt with batting and backing and baste. Quilt in the ditch around borders and block patches. Quilt around the printed motifs in the Fabric E and F patches. Bind to finish the quilt.

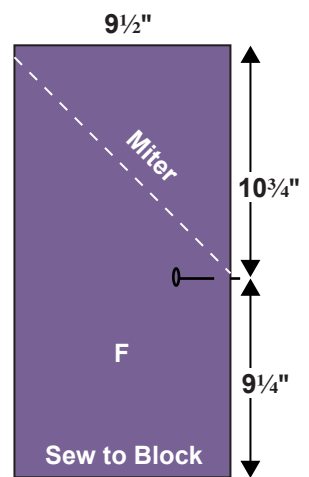
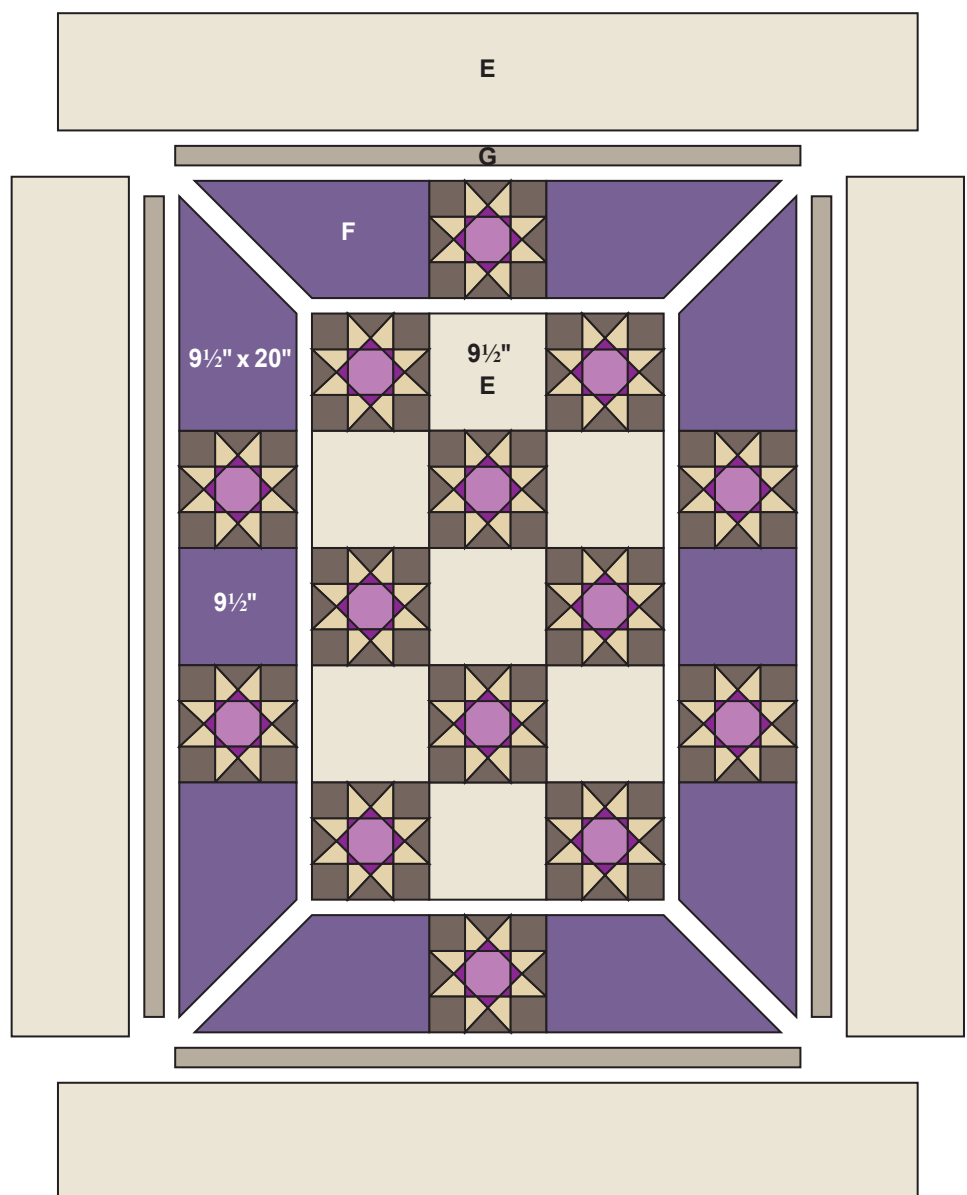


Diagram 5



Quilt Diagram

French Twist

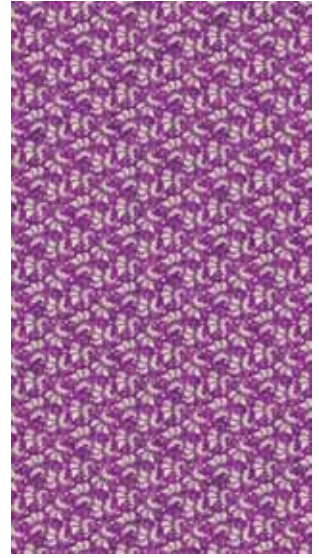
by Lonni Rossi



5730-MLP*



5732-MLN*



5732-MP*



5730-MP*



5733-MLN*



5733-ML*



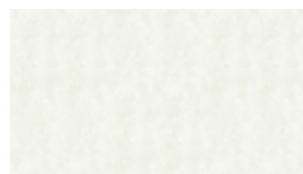
5731-MP*

*Additional fabrics
by Lonni Rossi*

Raindrops



5468-P



5468-L



5468-P1*

1384 Broadway
New York, NY 10018
(800) 223-5678
www.andoverfabrics.com

French Twist

by Lonni Rossi

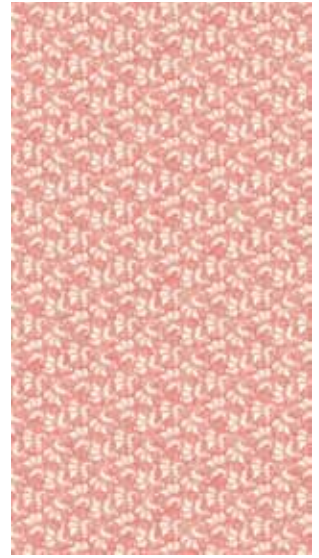
Andover
Fabrics™
makower uk®



5730-ML*



5732-MC*



5732-M0*



5730-MC*



5733-M0*



5733-MC*



5731-M0*

*Additional fabrics
by Lonni Rossi*
Raindrops



5468-N1



5468-01*



5468-C1

*Indicates fabric used in quilt pattern. Fabrics shown are 10% of actual size.

Free Pattern Download Available at www.andoverfabrics.com

5/25/12

1384 Broadway
New York, NY 10018
(800) 223-5678
www.andoverfabrics.com

French Twist

by Lonni Rossi



makower uk®



5730-MV*



5732-MV*



5732-MN*



5730-MN*



5733-MN*



5733-MV*



5731-MV*

*Additional fabrics
by Lonni Rossi*

Raindrops



5468-LG



5468-C



5468-T*

*Indicates fabric used in quilt pattern. Fabrics shown are 10% of actual size.

Free Pattern Download Available at www.andoverfabrics.com

5/25/12