

Giggleswick Mill

BY DI FORD-HALL



Giggleswick Cottage Quilt
designed by: **Di Ford-Hall**

Quilt Size: 82" x 82"

andoverfabrics.com



About Giggleswick Mill

My love of Old English Frame Quilts inspired this quilt. The Broderie Perse urn of flowers and scrappy squares on point make up the body of the quilt. The large floral print borders, typical in antique English quilts, give a soft look to the edges, ensuring your quilt will look like it was made 150 years ago. — *Di Ford-Hall*

andover



makower uk
The Henley Studio

Free Pattern Download Available

1384 Broadway New York, NY 10018
Tel. (800) 223-5678 • andoverfabrics.com

Giggleswick Cottage Quilt



Introducing Andover Fabrics new collection: GIGGLESWICK MILL by Di Ford-Hall

Quilt designed by DI Ford-Hall

Quilt finishes 82" x 82"

Fill a vase with your own version of appliquéd flowers cut from the novelty floral print. Then surround the vase with patchwork and luxurious striped borders. Reminiscent of early British medallion-style quilts with a combination of patchwork and appliqué, this stunning design is destined to become an heirloom.

Cutting Directions

Note: Read assembly directions before cutting patches. All measurements are cut sizes and include 1/4" seam allowances. A fat 1/8 is a 9" x 20"-22" cut of fabric. A fat 1/4 is an 18" x 20"-22" cut. The mitered borders include extra length for insurance. WOF designates the width of fabric from selvedge to selvedge (approximately 42" wide).

Fabric Requirements

| | | | Yardage | Fabric |
|------------------|-----------------------|--------|-------------------|---------|
| Fabric A | set, appliqué, border | | 2 yards | 8217-N |
| Fabric B | borders | | 5 yards | 8218-R |
| Fabric C | background | | fat 1/4 yard | 8144-N |
| *Fabric D | setting, binding | | 1 yard | 8152-G |
| Fabric E | appliqué | | fat 1/8 yard | 8155-P |
| Fabric F | setting, appliqué | | fat 1/4 yard | 8159-P |
| Fabric G | setting, appliqué | | fat 1/4 yard | 8222-R |
| 8 Darks | setting | | fat 1/4 yard each | |
| | 8220-N | 8220-R | 8220-T | 8221-N |
| | 8221-R | 8222-N | 8222-T | 8158-T |
| 7 Lights | setting | | fat 1/4 yard each | |
| | 8223-E | 8223-R | 8223-T | 8224-E |
| | 8224-N | 8224-T | 8158-E | |
| Backing | | | 7 1/2 yards | 8219-LN |

Fabric A Cut (4) borders 3" x 65", cut lengthwise
Cut (8) squares 7 3/4", cut in half diagonally twice to make 32 quarter-square triangles
Cut (2) squares 4 1/4", cut in half diagonally to make 4 half-square triangles
Cut floral appliqué as desired (read Step 2)

Fabric B Fussy-cut (4) borders 10 1/2" x 85", cut lengthwise (read Step 3)
Fussy-cut (4) framing strips 3 3/4" x 25", cut lengthwise (read Step 3)

Fabric C Cut (1) square 18" (to be trimmed)

Fabric D Cut (9) strips 2 1/2" x WOF for binding
Cut (6) squares 5"

Fabric E Cut appliqué templates 1 & 3 (read Step 2)

Fabric F Cut (6) squares 5"
Cut appliqué template 2

Fabric G Cut (9) squares 5"
Cut appliqué template 4

8 Darks From each: Cut (5-10) squares 5" (read Step 1)

7 Lights From each: Cut (5-7) squares 5" (read Step 1)

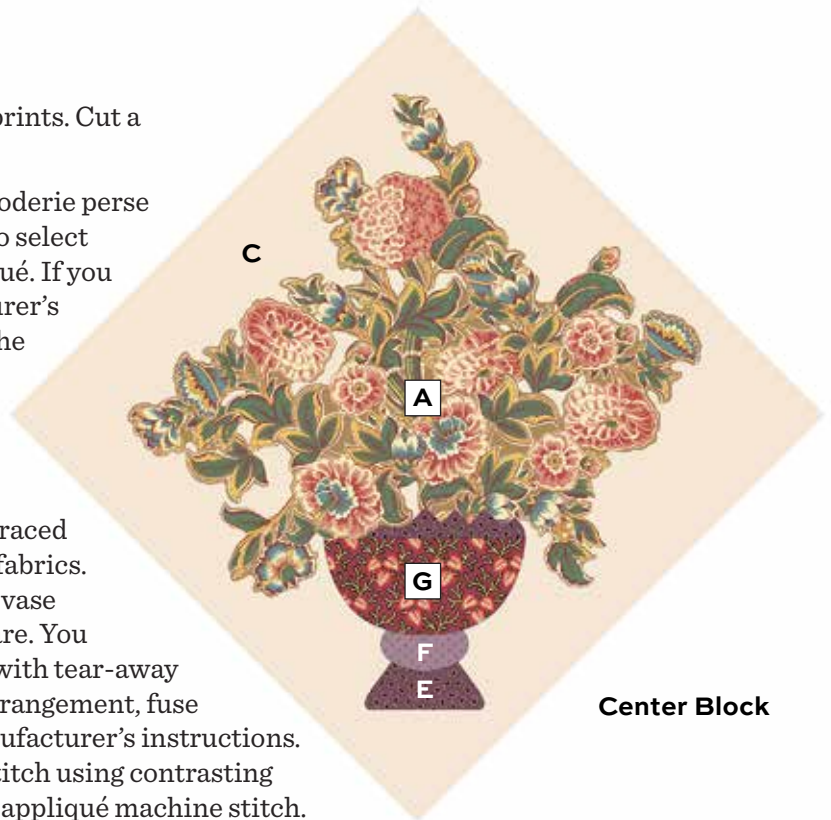
Backing Cut (3) panels 31" x 90", pieced to fit quilt top with overlap on all sides

Giggleswick Cottage Quilt

Making the Quilt

1. Cut a total of 68 squares 5" x 5" from all dark prints. Cut a total of 52 squares 5" x 5" from all light prints.
2. The floral motifs in the vase are made with broderie perse appliqué. Refer to the Center Block diagram to select Fabric A printed flowers and leaves for appliqué. If you choose to fuse the appliqué, follow manufacturer's instructions and fuse the fusible webbing to the wrong side of the motifs. Fussy-cut around the motifs.

Trace the vase patterns (templates 1-4) onto the paper side of paper-backed fusible web. Following manufacturer's instructions, fuse traced patterns to the wrong side of the appropriate fabrics. Cut out parts on the drawn lines. Position the vase patches and floral motifs on the Fabric A square. You may wish to stabilize the background square with tear-away interfacing. Once you are satisfied with the arrangement, fuse the patches to the background, following manufacturer's instructions. Finish the edges with a decorative machine stitch using contrasting thread, or use an invisible thread with a blind appliqué machine stitch. Tear away the stabilizer if used. Press the appliqué from the backside. Trim the square to 16½".



Center Block

3. Fussy-cut 4 Fabric B borders lengthwise from the same part of the print, referring to the quilt photo for placement. The little nosegay stripe should be centered between 2 wavy stripes. Be sure that all strips are cut the same. Set aside.

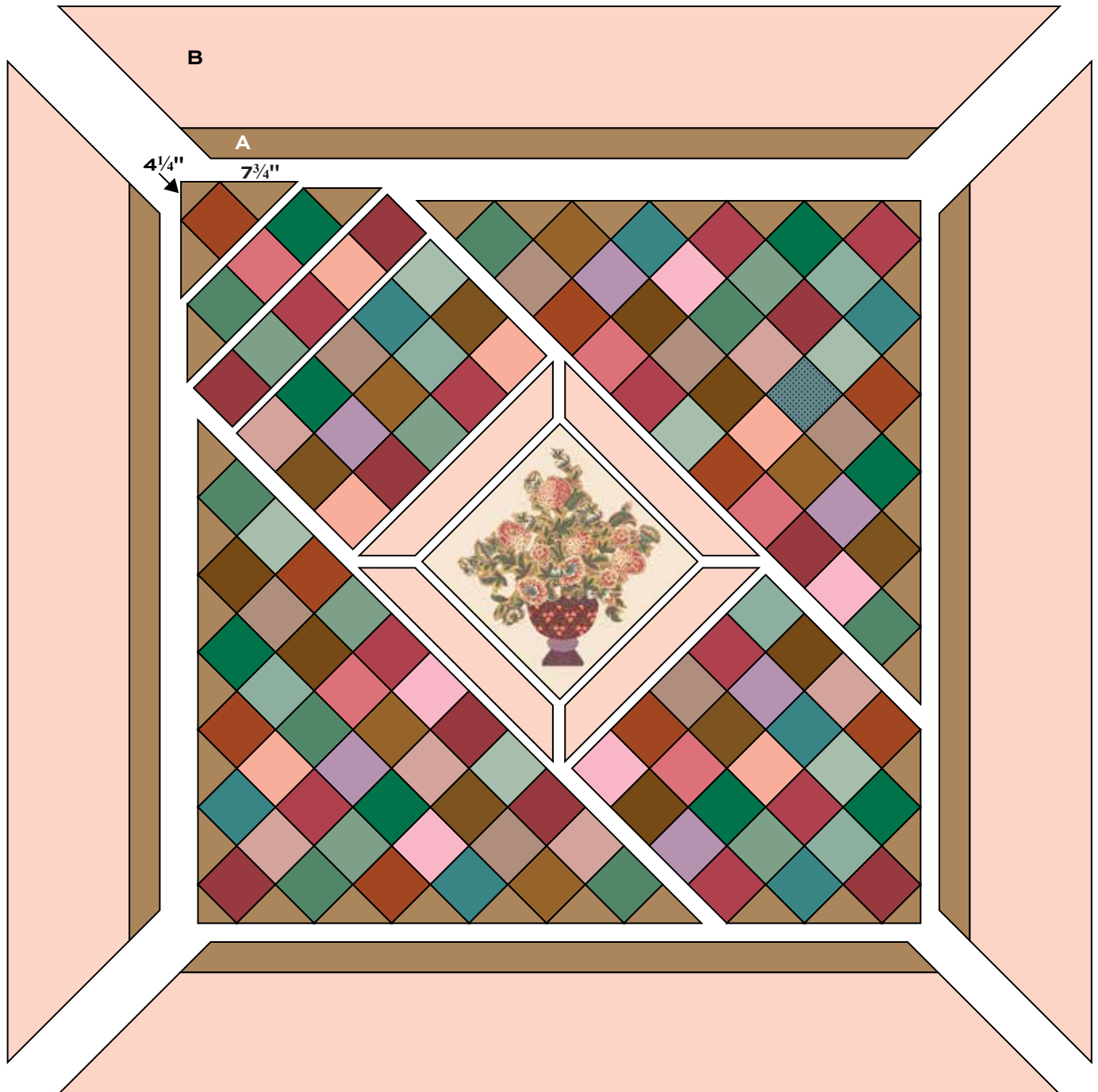
Likewise, fussy-cut 4 Fabric B framing strips from the wavy part of the stripe. Sew the framing strips to the appliquéd square, starting and stopping stitching ¼" from the quilt's raw edge. Miter the corners and trim the excess. The unit should measure 23" from raw edge to raw edge.

4. Refer to the Quilt Diagram. On a design board or large flat surface, arrange the light and dark 5" squares into checkerboard rows to make the corner units as shown. Add Fabric A quarter-square triangles at ends of rows where needed. Stand back and be certain that the light and dark squares are in the correct order. Note that only dark squares should be at the outer edges. (Hint: Arrange and make one corner unit at a time, beginning with the top left unit, then the bottom right unit, and finally the larger units.) Sew the corner units to the quilt center. Sew a Fabric A half-square triangle to each corner. Trim the sides even, leaving a generous ¼" seam allowance beyond the edges of the squares.
5. Matching centers, sew a Fabric A border to a Fabric B border. Repeat to make 4 border units. Sew the border units to the quilt, starting and stopping stitching ¼" from the quilt's raw edge. Miter the corners and trim the excess.

Finishing the Quilt

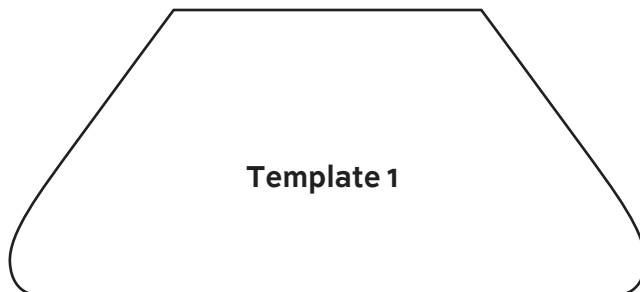
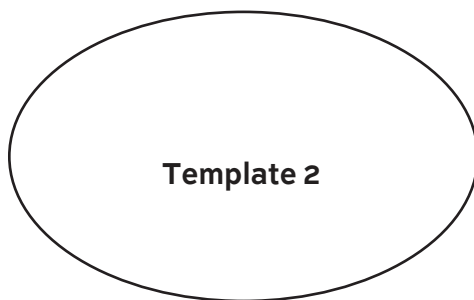
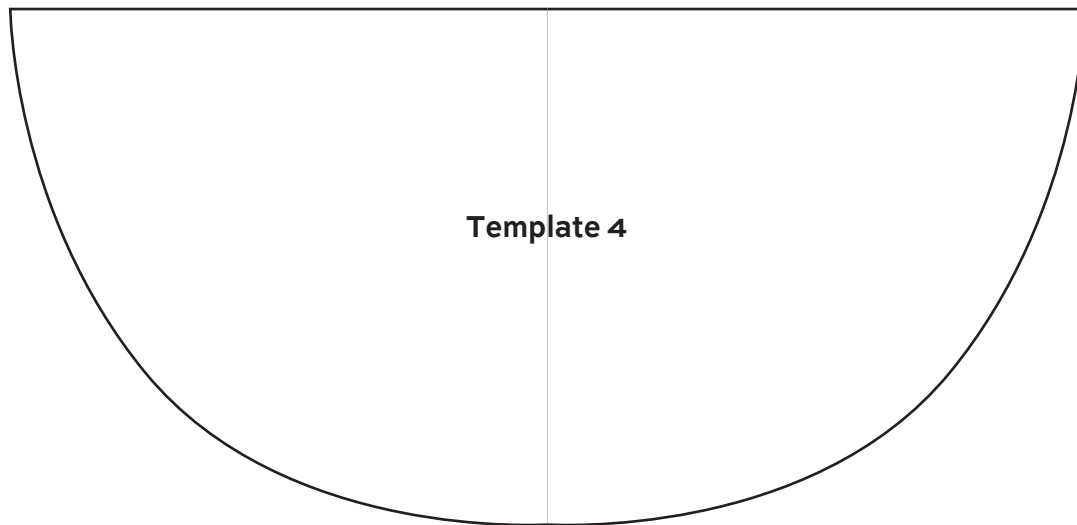
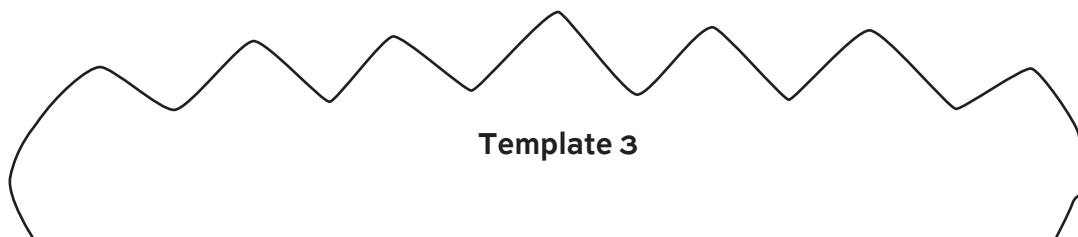
6. Layer the quilt with batting and backing and baste. Quilt in the ditch around borders and block patches. Quilt around the appliqué, and fill in the background as you wish. Quilt around the printed stripe in the outer border. Bind to finish the quilt.

Giggleswick Cottage Quilt



Quilt Diagram

Giggleswick Cottage Quilt



Giggleswick Mill

BY DI FORD-HALL



8217-N*



8217-R



8217-T



8218-N



8218-R*



8218-TL

Blend with fabrics from **Trinkets** by Kathy Hall



8158-T*



8152-G*



8220-G



8221-N*



8222-N*



8219-RL*



8219-LN



8144-N*



8220-N*



8221-R*



8222-O



8223-E*



8224-E*



8158-E*



8220-R*



8221-T



8222-R*



8223-R*



8224-N*



8159-P*



8220-T*



8221-Y



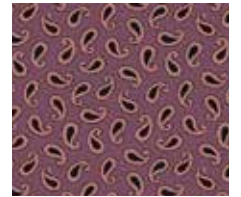
8222-T*



8223-T*



8224-T*



8155-P*

*Indicates fabrics used in quilt pattern. Fabrics shown are 25% of actual size.

andover

makower uk
The Henley Studio

Free Pattern Download Available

1384 Broadway New York, NY 10018
Tel. (800) 223-5678 • andoverfabrics.com