

Gingerlily

RENÉE NANNEMAN

a
100
years



Gingerlily Sparkle Quilt
designed by: **Renée Nanneman**
Quilt Size: **79½" x 102"**
Skill Level: **Intermediate**

andover

makower uk

Free Pattern Download Available
1384 Broadway, 24TH Floor, New York, NY 10018
Tel. (800) 223-5678 • andoverfabrics.com

7/15/22

Gingerlily Sparkle Quilt

Introducing Andover Fabrics new collection: **GINGERLILY** by Renée Nanneman

Quilt designed by Renée Nanneman

Quilt finishes 79½" x 102"

Block sizes: 18", 9", 4½"

Take a visual stroll through this opulent star-studded maze that is made up of richly patterned florals. Because it is constructed with easy-to-piece sections, the quilt is simpler to put together than it looks. This could become the heirloom quilt to pass on to generations.

Cutting Directions

Note: Read assembly directions before cutting patches. All measurements are cut sizes and include ¼" seam allowances. A fat ¼ is an 18" x 20"-22" cut. Borders are cut the exact lengths required plus ¼" seam allowances. WOF designates the width of fabric from selvedge to selvedge (approximately 43" wide).

Some of the blocks are made with specific fabrics, and some have parts that are of your choosing ("scrap"). Feel free to change the fabrics as you wish. Yardage is sufficient to make some substitutions.

Cutting for ONE Big Block (Make 6)

Cut (1) square 9½" for block center

(Refer to Quilt Diagram for fabric choice.)

Cut (4) squares 5½" (or 5¾") for star point HST

(Read Step 1 before cutting.)

Cut (4) squares 5½" (or 5¾") for background HST

Cut (4) squares 5" for background corners

Cutting for ONE Medium Block (Make 17)

Cut (1) "scrap" square 5" for block center

Cut (4) "scrap" squares 3¼" (or 3⅛") for star point HST

Cut (4) Fabric M squares 3¼" (or 3⅛") for background HST

Cut (4) Fabric M squares 2¾" for background corners

Cutting for ONE Small Block (Make 36)

Cut (1) "scrap" square 2¾" for block center

Cut (4) Fabric I squares 2⅛" (or 2") for star point HST

Cut (4) Fabric P squares 2⅛" (or 2") for background HST

Cut (4) Fabric P squares 1⅝" for background corners

Cutting for ONE Small Pink Block (Make 8)

Cut (1) Fabric L square 2¾" for block center

Cut (4) Fabric I squares 2⅛" (or 2") for star point HST

Cut (4) Fabric Q squares 2⅛" (or 2") for background HST

Cut (4) Fabric Q squares 1⅝" for background corners

Cutting for entire quilt

Fabrics used in the Big Blocks are indicated on the Quilt Diagram.

Fabric Requirements

Yardage	Fabric				
*Fabric A	border	2½ yards	543-L		
*Fabric B	blocks	fat ¼	543-R		
Fabric C	sashes	½ yard	544-G		
Fabric D	blocks	½ yard	544-L		
Fabric E	blocks	½ yard	544-N		
Fabric F	blocks	fat ¼	544-R		
Fabric G	blocks	½ yard	545-L		
Fabric H	blocks	fat ¼	548-E		
Fabric I	blocks	1 yard	548-G		
Fabric J	blocks	fat ¼	546-N		
Fabric K	blocks	fat ¼	546-Y		
Fabric L	blocks	fat ¼	549-E		
Fabric M	blocks	1 yard	549-L		
Fabric N	blocks	fat ¼	550-G		
Fabric O	border	1 yard	550-R		
Fabric P	blocks	1 yard	551-LN		
Fabric Q	blocks	fat ¼	551-LR		
8 Prints	blocks	fat ¼ each			
		545-G	547-R	550-E	550-Y
		552-G	552-L	553-G	553-R
3 Lights	sashes	fat ¼ each			
		547-L	547-N	547-Y	
Binding		¾ yard	547-R		
**Backing		7½ yards	544-R		

* Yardages for Fabrics A and B are reversed, depending on outer border selected.
** Use Fabric 544-L for backing of quilt with pink outer border.

Fabric A

Cut (2) side borders 9½" x 84½", cut lengthwise
Cut (2) top/bottom borders 9½" x 80", cut lengthwise
Cut (1) square 9½" for Big Block center

Fabric B

Cut (1) square 9½" for Big Block center

Fabric C

Cut (2) sashes 2" x 14" (sashes can be made with other fabrics as you wish)
Cut (7) sashes 2" x 9½"
Cut (2) sashes 2" x 5"
Cut (1) square 9½" for Big Block center

Fabric D

Cut (8) squares 5½" (or 5¾") for Big Block HST
(Read Step 1 before cutting.)
Cut (8) squares 5" for Big Block corners

Gingerlily Sparkle Quilt

Fabric E

Cut (1) square $9\frac{1}{2}$ " for Big Block center
Cut (4) squares $5\frac{1}{2}$ " (or $5\frac{3}{8}$ ") for Big Block HST
Cut (4) squares 5" for Big Block corners

Fabric F

Cut (3) sashes 2 " x $9\frac{1}{2}$ "
Cut (1) sash 2 " x 5 "
Cut (4) squares $5\frac{1}{2}$ " (or $5\frac{3}{8}$ ") for Big Block HST
Cut (4) squares 5" for Big Block corners

Fabric G

Cut (2) squares $9\frac{1}{2}$ " for Big Block centers
Cut (8) squares $5\frac{1}{2}$ " (or $5\frac{3}{8}$ ") for Big Block HST
Cut (8) squares 5" for Big Block corners

Fabric H

Cut (4) squares $5\frac{1}{2}$ " (or $5\frac{3}{8}$ ") for Big Block HST

Fabric I

Cut (4) squares $5\frac{1}{2}$ " (or $5\frac{3}{8}$ ") for Big Block HST
Cut (176) squares $2\frac{1}{8}$ " (or 2 ") for Small Block HST

Fabric J

Cut (4) squares $5\frac{1}{2}$ " (or $5\frac{3}{8}$ ") for Big Block HST

Fabric K

Cut (4) squares $5\frac{1}{2}$ " (or $5\frac{3}{8}$ ") for Big Block HST

Fabric L

Cut (8) squares $2\frac{3}{4}$ " for Small Pink Block centers

Fabric M

Cut (68) squares $3\frac{1}{4}$ " (or $3\frac{1}{8}$ ") for Medium Block HST
Cut (68) squares $2\frac{3}{4}$ " for Medium Block corners

Fabric N

Cut (4) squares $5\frac{1}{2}$ " (or $5\frac{3}{8}$ ") for Big Block HST

Fabric O

From 8 strips 2 " x WOF, cut and piece the following:

(2) side borders 2 " x $81\frac{1}{2}$ "
(2) top/bottom borders 2 " x 62 "

Cut (4) squares $5\frac{1}{2}$ " (or $5\frac{3}{8}$ ") for Big Block HST

Fabric P

Cut (144) squares $2\frac{1}{8}$ " (or 2 ") for Small Block HST
Cut (144) squares $1\frac{5}{8}$ " for Small Block corners

Fabric Q

Cut (32) squares $2\frac{1}{8}$ " (or 2 ") for Small Pink Block HST
Cut (32) squares $1\frac{5}{8}$ " for Small Pink Block corners

8 Prints

Cut prints as you wish.

Cut (17) squares 5" for Medium Block centers

Cut (4) squares $3\frac{1}{4}$ " (or $3\frac{1}{8}$ ") for HST star points for each of 17 Medium Blocks

Cut (36) squares $2\frac{3}{4}$ " for Small Block centers

3 Lights

Cut a total of the following, referring to the fabric quilt for placement

Cut (12) sashes 2 " x $18\frac{1}{2}$ "

Cut (1) sash 2 " x 5 "

Binding

Cut (10) strips $2\frac{1}{2}$ " x WOF for binding

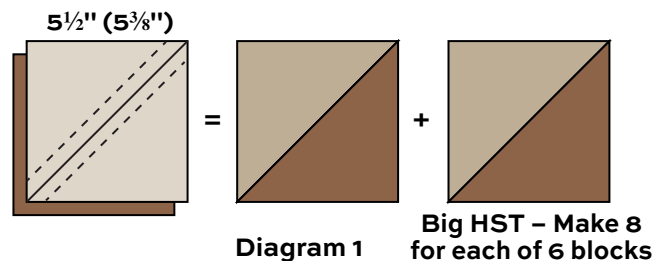
Backing

Cut (3) lengths 38 " x 90 ", pieced to fit quilt top with overlap on all sides

Making the Quilt

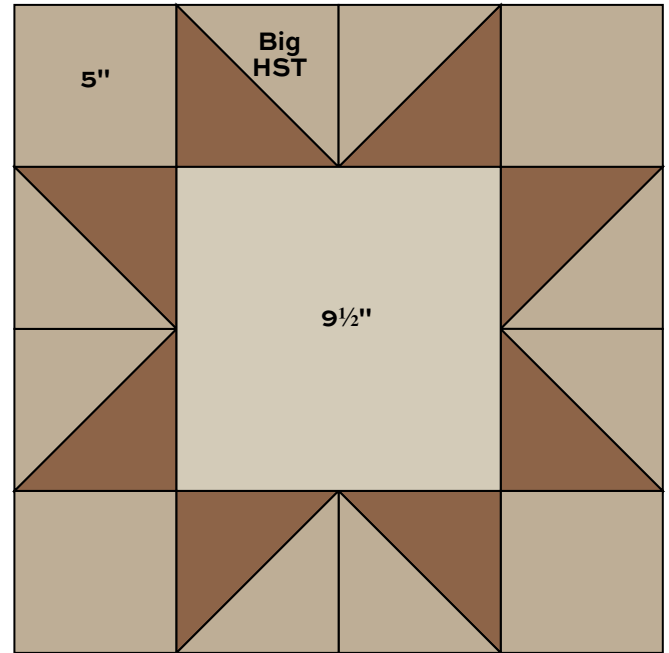
1. The Big Blocks are made with specific fabric combinations, as shown on the Quilt Diagram. The Medium and Small Blocks are made with some specific fabrics and some that are of your choosing ("scrap" in the block diagrams). Refer to the figures and the fabric quilt when choosing fabric combinations. Feel free to change blocks as you wish.

2. The Big Block star points are made with half-square triangles (HST) that finish $4\frac{1}{2}$ ". Use your favorite method to make HST or follow these directions. Fabric squares cut $5\frac{1}{2}$ " will be trimmed after stitching. Cut the squares $5\frac{3}{8}$ " if you do not wish to trim later. Draw a diagonal line on the wrong side of the lighter $5\frac{1}{2}$ " squares. With right sides together, position the marked square on top of the second fabric square. Stitch $\frac{1}{4}$ " on each side of the diagonal line (Diagram 1). Cut apart on the drawn line. Press the seam allowance toward the darker fabric. Trim to 5" if needed. Make 8 HST for each Big Block, referring to the Quilt Diagram for fabric combinations.



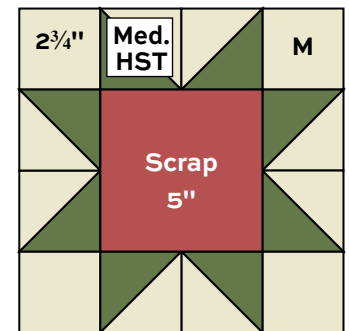
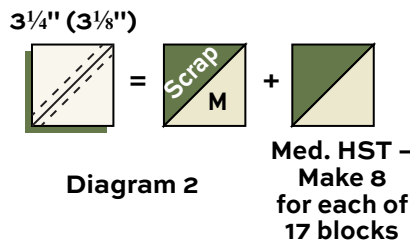
Gingerlily Sparkle Quilt

- Referring to the Big Block diagram, arrange 8 HST, a $9\frac{1}{2}$ " center square, and 5" corner squares in 4 rows. Pay attention to the orientation of the star points. Join the patches into rows, and then join the rows. Make 6 Big Blocks. They should measure $18\frac{1}{2}$ " square from raw edge to raw edge. If they do not, adjust stitching and pressing methods.
- Repeat the directions in Step 2 to make 8 HST for each Medium Block, using Fabric M $3\frac{1}{2}$ " (or $3\frac{1}{8}$ ") squares with 4 of the same scrap squares for a block (Diagram 2). Trim HST to $2\frac{3}{4}$ " if needed. Make 8 HST all the same for the block. Join the HST, a scrap 5" center square, and Fabric M corners to make the block. Make 17 Medium Blocks. They should measure $9\frac{1}{2}$ " square.
- Make 8 HST for each Small Block using Fabrics I and P $2\frac{1}{8}$ " (2") squares for the HST (Diagram 3). Trim the HST to $1\frac{5}{8}$ " if needed. Join the HST, Fabric P corner squares, and a scrap $2\frac{3}{4}$ " center square. Make 36 Small Blocks. They should measure 5" square.

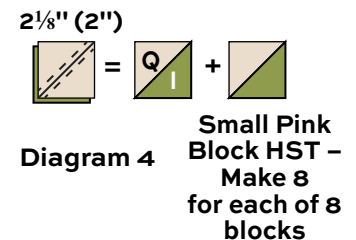
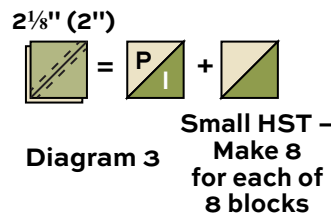


18" Big Block – Make 6

- Likewise, make Small Pink Blocks using Fabrics I and Q for the HST (Diagram 4). Trim HST to $1\frac{5}{8}$ " if needed. Join the HST, Fabric Q corner squares, and a Fabric L center square. Make 8 Small Pink Blocks. They should measure 5" square.
- The next steps refer to the Quilt Diagram. Note that the blocks and sashes are joined into 6 sections. There are NO set-in seams. Because of the overall size of the quilt, it is easier to concentrate on one section at a time. On a flat surface or design board, choose and position the various sized blocks needed for one section, including the sashes. Join the blocks into pairs and rows as needed, inserting the sashes as required for the design. Once you are satisfied with the positioning, join the parts to make the section. Repeat the steps until all 6 sections are complete. Join the 3 sections in the left vertical column, and then the 3 in the right vertical column. Finally, sew the two parts together.



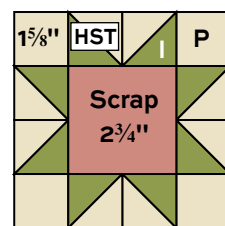
9" Med. Block – Make 17



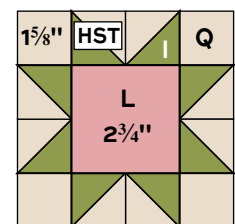
- Sew the long Fabric O borders to the sides of the quilt, and the short borders to the top and bottom. Repeat with the Fabric A borders.

Finishing the Quilt

- Layer the quilt with batting and backing and baste. Quilt in the ditch around borders and patches. Quilt around the printed motifs in the center squares and where desired. Bind to finish the quilt.



4 1/2" Small Block – Make 36



4 1/2" Small Pink Block – Make 8

Gingerlily

RENÉE NANNEMAN



543-L



543-R



544-G



544-L



544-N



544-R



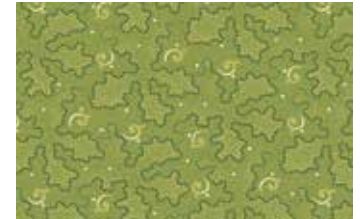
545-G



545-L



548-E



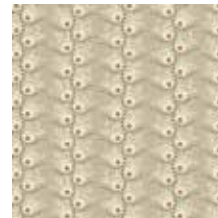
548-G



546-N



546-Y



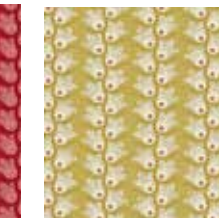
547-L



547-N



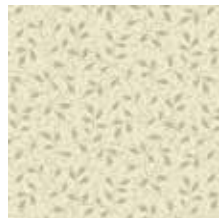
547-R



547-Y



549-E



549-L



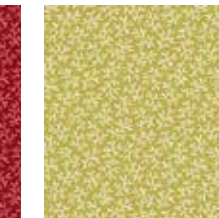
550-E



550-G



550-R



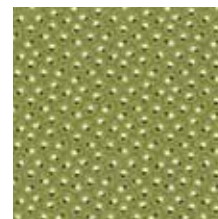
550-Y



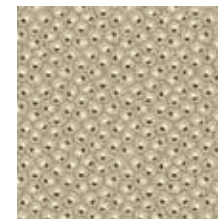
551-LN



551-LR



552-G



552-L



553-G



553-R

All fabrics are used in quilt pattern. Fabrics shown are 25% of actual size.

andover

makower uk

Free Pattern Download Available

1384 Broadway, 24TH Floor, New York, NY 10018

Tel. (800) 223-5678 • andoverfabrics.com

7/15/22