

Rainbow Ride Quilt



Introducing Andover Fabrics new collection: **HOLIDAY TWEETS** by Kim Schaefer

Quilt designed by Kim Schaefer

Quilt finishes 60" x 78"

Cheerful little birds perch on brightly colored presents, surrounded by enchanting trees and dazzling ornaments. The patchwork is so, so easy that you may want to put this project on your Christmas list for several lucky recipients.

Cutting Directions

Note: Read assembly directions before cutting patches. All measurements are cut sizes and include 1/4" seam allowances. A fat 1/8 is a 9" x 20"-22" cut of fabric. A fat 1/4 is an 18" x 20"-22" cut. WOF designates the width of fabric from selvedge to selvedge (approximately 42" wide).

Fabric A

Fussy-cut (2) side borders 4" x 71 1/2", cut lengthwise (read Step 1)
Fussy-cut (2) top/bottom borders 4" x 60 1/2"

Fabric B

Fussy-cut (4) strips 3 1/2" x 44", pieced to make the following:
(2) sashes 3 1/2" x 69 1/2" (read Step 1)
Cut (14) rectangles 3 1/2" x 6 1/2" from the bird stripe

Fabric C

Cut (8) strips 2 1/2" x WOF for binding
Cut (10) squares 3 1/2" x 3 1/2"

Fabric D

Cut (7) strips 1 1/2" x WOF, pieced to make the following:
(2) side borders 1 1/2" x 69 1/2"
(2) t/b borders 1 1/2" x 53 1/2"
Cut (9) squares 3 1/2" x 3 1/2"

Fabric Requirements

		Yardage	Fabric	
Fabric A	border	2 1/4 yards	125-K	
Fabric B	sash	1 1/4 yards	125-X	
Fabric C	sash, binding	3/4 yard	8537-G1	
Fabric D	sash, border	1/2 yard	8537-R1	
17 Brights	setting	fat 1/4 yard each		
	126-K 126-X	127-K	127-X	128-K
	*128-X 129-K	129-X	130-KR	130-XG
	131-AK 131-K	131-KR	131-XG	132-G
	132-K 132-R			
5 Solids	sash	fat 1/8 yard each		
	8537-G 8537-G2 8537-V 8537-V1 8737-Y1			
*Backing		3 3/4 yards	128-X	

17 Brights

From each:
Cut (7 or 8) rectangles 3 1/2" x 6 1/2" (124 total)

5 Solids

From each:
Cut (10) squares 3 1/2" x 3 1/2" (50 total)

Backing

Cut (2) panels 42" x 66", pieced to fit quilt top with overlap on all sides

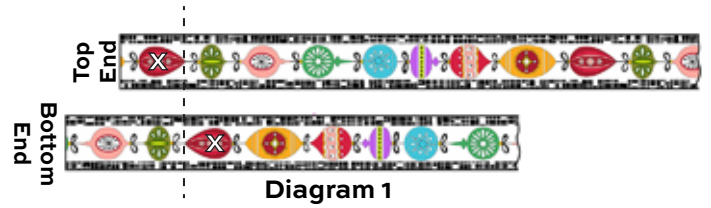
Making the Quilt

1. Refer to the quilt photograph to decide where to fussy-cut fabrics. The outer border is cut from the tree stripe of Fabric A. Center the 2" mark of the ruler on the center of the tree stripe and cut border strips 4" wide.

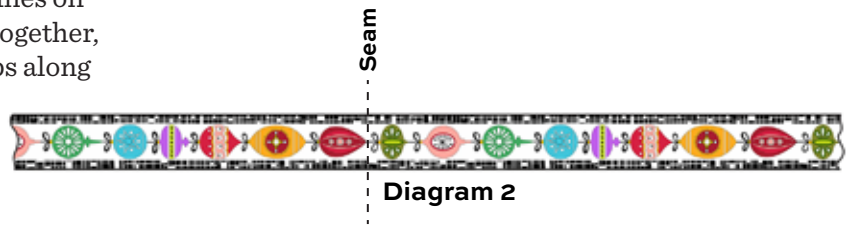
The middle sashes are cut from the ornament stripe of Fabric B. Each sash requires 2 strips that are pieced. This method reduces the amount of yardage needed of Fabric B. Center the 1 1/4" mark of the ruler on the center of the ornament stripe, and cut strips 3 1/2" wide, including part of the black/white print on the sides of the ornaments. Fabric B sashes are longer than needed to allow for "fussy-piecing" in Step 2, and they will be trimmed later.

Rainbow Ride Quilt

- Identify an ornament near the top end of one Fabric B strip, and the same ornament near the bottom end of a second strip ("X" in Diagram 1). It doesn't matter which ornament you choose. Rotate the second strip and shift it so it is one ornament away from the same ornament in strip 1. The strips should be upside down from one another. Note the dashed (sewing) lines on the diagram. Position the 2 strips right sides together, aligning the sewing lines. Sew across the strips along the sewing line using a basting stitch.



The line of stitching should be between ornaments, not on an ornament. Press the strips open to be sure that the print looks continuous (Diagram 2). If you are happy with the look, sew over the line with a regular stitch. Repeat to make a second sash.



- Referring to the Quilt Diagram, arrange the 3½" x 6½" rectangles in 6 columns of 23 patches each. Join the patches. Arrange and join the 3½" squares in 3 columns of 23 patches each. Join the various pieced columns and Fabric B sashes in the order shown. Trim Fabric B sashes even with the quilt's top and bottom edges.



- Sew Fabric D borders to the sides of the quilt. Sew Fabric D borders to the top and bottom. Sew Fabric A borders to the quilt, paying attention to the orientation of the trees.

Finishing the Quilt

- Layer the quilt with batting and backing and baste. Quilt in the ditch around borders and patches. Quilt around the printed motifs as you wish. Bind to finish the quilt.

Quilt Diagram

Holiday Tweets

BY Kim Schaefer



125-K



125-X



126-K



126-X



127-K



127-X



128-K



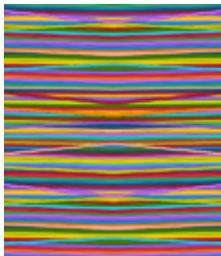
128-X



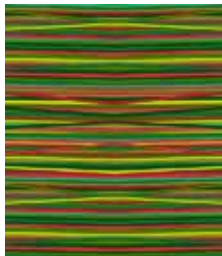
129-K



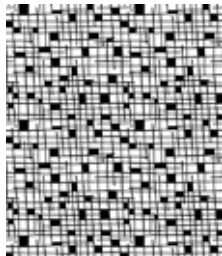
129-X



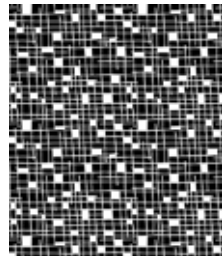
130-KR



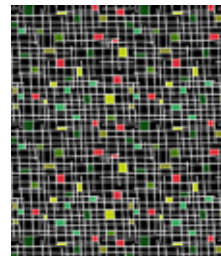
130-XG



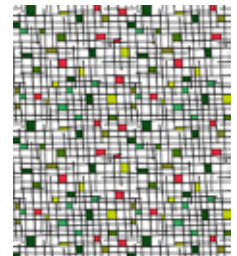
131-AK



131-K



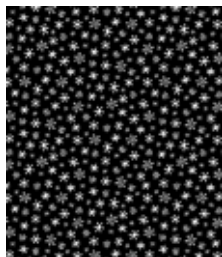
131-KR



131-XG



132-G



132-K



132-R

Blend with fabric from Brushline by Kim Schaefer



8537-G



8537-G1



8537-G2



8537-R1



8537-V



8537-V1



8537-Y1

All fabrics are used in quilt pattern. Fabrics shown are 15% of actual size.

andover

makower uk
The Henley Studio

Free Pattern Download Available

1384 Broadway New York, NY 10018
Tel. (800) 223-5678 • andoverfabrics.com