

# Home Grown

Finished size 28" x 52" (70cm x 130cm)

Wallhanging designed by Lynne Goldsworthy of [lilysquilts.blogspot.com](http://lilysquilts.blogspot.com)  
using the Home Grown collection from Makower UK [www.makoweruk.com](http://www.makoweruk.com)



# Home Grown

Finished size 28" x 52" (70cm x 130cm)

Wallhanging designed by Lynne Goldsworthy of [lilysquilts.blogspot.com](http://lilysquilts.blogspot.com)  
using the Home Grown collection from Makower UK [www.makoweruk.com](http://www.makoweruk.com)

## **Fabric Requirements**

SKU	Description	Amount	Notes
1776B	Animals blue	1 ½ m / 1 ¾ yds	Leave whole for backing
1776Q	Animals Cream	40 cm / 15"	Cut into five 2 ½" WOF strips, sew end to end and cut into three 22", two 26" and two 45 ¾" lengths
1777V	Vegetables Brown	One F8th	See Cutting Instructions
1778B	Hens Blue	One F8th	See Cutting Instructions
1779B	Eggs and Chicks Blue	One F8th	See Cutting Instructions
1779Y	Eggs and Chicks Yellow	One F8th	See Cutting Instructions
1473B4	Linen Texture Blue	One F8th	Eighteen 1 ¼" squares, one 3 ½" x 10" rectangle
1473G4	Linen Texture Green	One F8th	Twelve 1 ¼" squares, one 3 ½" x 7" rectangle
1473Q	Linen Texture Cream	1.10 m / 1 ¼ yd	See Cutting Instructions
1473Q3	Linen Texture Yellow	One F8th	Twelve 1 ¼" squares and one 3 ½" x 7" rectangle
1473S4	Linen Texture Brown	60 cm / 20"	Six 1 ½" WOF strips Four 2 ½" WOF strips for the binding
1473S8	Linen Texture Dark Grey	One F8th	Eighteen 1 ¼" squares and one 3 ½" x 10" rectangle
	Wadding	90cm x 1.5m 35" x 58"	
	Templates		Two large and two small HST templates Twelve roof templates

### Notes:

- Read the pattern in full before starting.
- ¼" seams are used throughout except where stated otherwise.
- Press after each seam, pressing seams open or to one side as preferred.
- WOF - width of fabric – a strip of fabric cut from selvedge to selvedge.
- LOF - length of fabric – a strip of fabric cut parallel to the selvedge.
- The roof templates in this pattern are foundation paper pieced (FPP).  
If you haven't FPPed before, you can find a good online tutorial here:  
<http://www.lovepatchworkandquilting.com/we-love/foundation-paper-piece>
- Make sure to visit <http://www.makoweruk.com/projects/> to ensure you are working from the most up-to-date version of the pattern.

## Cutting the fabrics

Cut the fabrics as shown in the fabric requirements table and as set out below.

1. Cut the vegetables, hens and blue and yellow eggs and chicks ("house prints") F8ths into One 4 ½" LOF strip (i.e. 4 ½" x 9") and cut that into two 4 ½" squares.  
Cut the remainder into seven 1 ¼" WOF strips and cut those into three 10" lengths, nine 4 ¾" lengths and three 2" lengths.

2. Cut the cream linen texture into:

Twenty-nine 1" WOF strips – leave six whole, cut nine into the following lengths:

Four 3 ½"

Four 5"

Nine 6 ¾"

Six 8 ¼"

Ten 20 ½"

Sew the remaining fourteen end to end and cut into the following lengths:

Ten 22"

Two 27"

Two 28 ½"

Two 49 ¾"

Two 51 ¼"

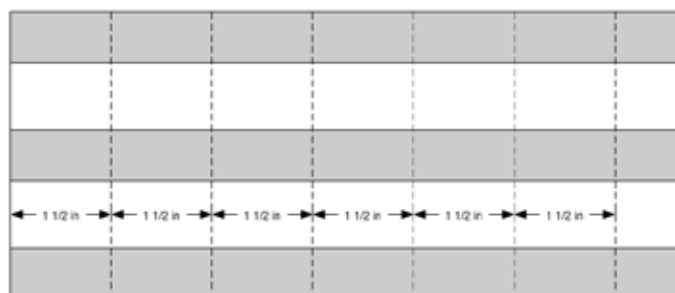
Two 1 ¼" WOF strips cut into twenty 1 ¼" squares and six 6 ¾" lengths.

Four 1 ½" WOF strips – cut into twelve 1 ½" squares, twelve 2 ½" lengths, eight 3 ½" lengths and eight 10" lengths.

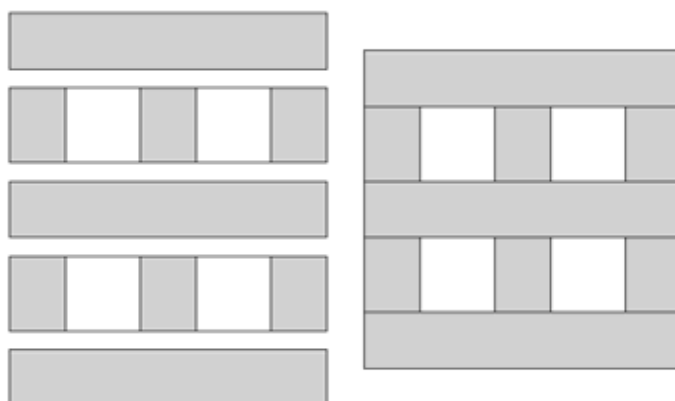
One 3 ½" WOF strip cut into six 3 ½" squares.

## Making the houses

1. Sew four sets of five strips: in each set you will have three of the house print 1 ¼" x 10" strips and two of the cream linen texture 1 ½" x 10" strips. Cut into six 1 ½" lengths.



2. Sew these strips into three sets of two using three 1 ¼" x 4 ¾" strips of the house prints to make the front of the house.



3. Foundation paper piece the roof of each of the houses using the roof templates and the following pieces (remember to shorten your stitch to 1.5 for foundation paper piecing):

Section 1: 1 ½" x 2" strip of house print

Section 2: 1 ½" x 2 ½" strip of cream linen texture

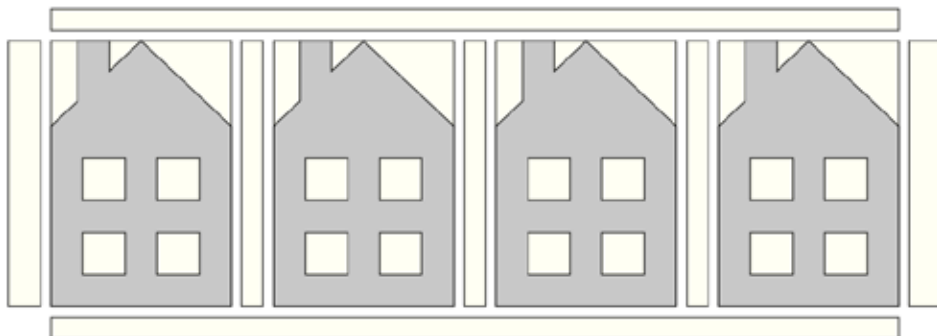
Section 3: 1 ½" square of cream linen texture

Section 4: 4 ½" square of house print cut in half on the diagonal

Section 5: 3 ½" square of cream linen texture cut in half on the diagonal

4. Trim paper and fabric to size along the dashed lines and remove papers from the back by tearing along the seam lines.
5. Sew the roofs to the fronts of the houses.

6. Sash the houses into three rows of four with 1" x 6 3/4" strips of cream linen texture in between each one (three per row). Sew 1 1/4" x 6 3/4" strips of cream linen texture to each end of this piece then 1" x 20 1/2" strips of cream linen texture to the top and bottom.



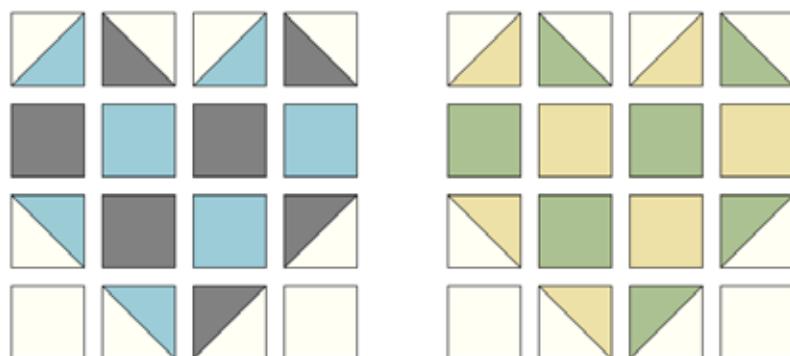
### **Making the hearts**

7. To make the six blue and grey and the four green and yellow hearts, you will need to make:  
 twenty-four blue/cream half square triangles (HSTs);  
 twenty-four grey/cream HSTs;  
 sixteen green/cream HSTs;  
 and sixteen yellow/cream HSTs.

You will make these using the 3 1/2" x 10" and the 3 1/2" x 7" linen texture rectangles and the corresponding HST templates.

8. To piece the templates, place a cream linen texture rectangle and a colour linen texture rectangle right sides together.
9. Place the fabrics against the back of the template, holding up to the light to make sure the whole of the template is covered and with the cream fabric next to the back of the template. Pin in place.
10. Shorten your stitch to 1.5, and sew along the red lines.
11. Rotary cut along the blue lines, cutting the template into sixteen or twenty-four triangles.
12. Scissor or rotary cut along the green lines.
13. Press each HST open. You do this before removing the papers because it keeps the HST seam nice and straight.
14. Remove papers from the back by folding along the sewn line then tearing away. These will measure 1 1/4" square at this stage and 3/4" square once pieced into the wall hanging.

15. Sew the HSTs and the 1 1/4" linen texture squares into hearts as shown opposite by sewing the pieces into four rows of four and then sewing those four rows together to finish each heart.



16. Sash the hearts into two rows of five with 1 1/2" x 3 1/2" strips of cream linen texture in between each one (four per row). Sew 1" x 3 1/2" strips of cream linen texture to each end of this piece then 1" x 20 1/2" strips of cream linen texture to the top and bottom.

## **Making the stitching strips**

17. Sew together six 1" WOF cream linen texture strips and six 1 ½" WOF brown linen texture strips alternating cream and brown. Cut into fifty-six ¾" wide strips as shown below (which just shows part of the longer strips).

18. Sew these end to end to create one very long strip which will be used to make the stitching strips.

19. Cut this strip into the following lengths (NB; you may choose to fussy cut these as we did so that each end of the strip finishes with brown fabric so that the brown stitches always meet on the corners - see image on front cover):

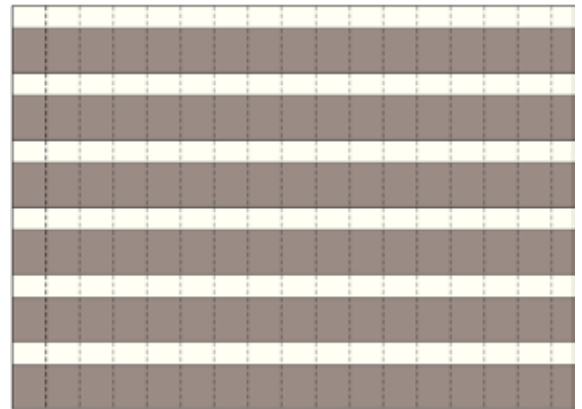
Four 4 ½";

Six 7 ¾";

Ten 21";

Two 27 ½"; and

Two 50 ¾".



## **Assembling the quilt top**

20. Sash:

the ends of the heart strips with the 4 ½" stitches strips;  
then the top and bottom with 21" stitches strips;  
then the ends with the 1" x 5" cream linen texture strips;  
then the top and bottom with the 1" x 22" cream linen texture strips.

21. Sash:

the ends of the houses strips with the 7 ¾" stitches strips;  
then the top and bottom with the 21" stitches strips;  
then the ends with the 1" x 8 ¼" cream linen texture strips;  
then the top and bottom with the 1" x 22" cream linen texture strips.

22. Sew these pieces and the 2 ½" x 22" cream animals strips into one vertical strip with the cream animals strips in between the houses and heart rows. See main image for layout.

23. Sew the two 2 ½" x 45 ¾" cream animals strips to the sides and then the two 2 ½" x 26" cream animals strips to the top and bottom.

24. Finally add the following sashings to the whole piece:

1" x 49 ¾" strips of cream linen texture to the sides;

1" x 27" strips of cream linen texture to the top and bottom;

50 ¾" stitches strips to the sides;

27 ½" stitches strips to the top and bottom;

1" x 51 ¼" strips of cream linen texture to the sides; and

1" x 28 ½" strips of cream linen texture to the top and bottom.

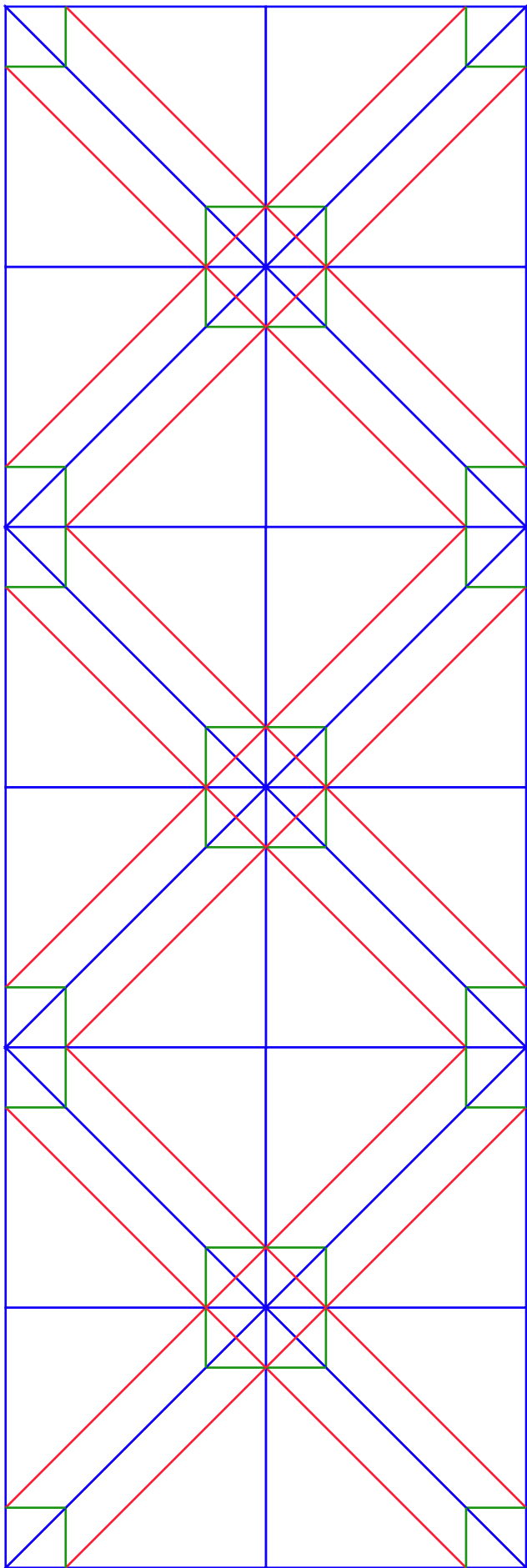
## **Finishing the quilt**

1. Sew the binding strips end to end using diagonal or straight seams as preferred and press wrong sides together along the length to make a double fold binding.

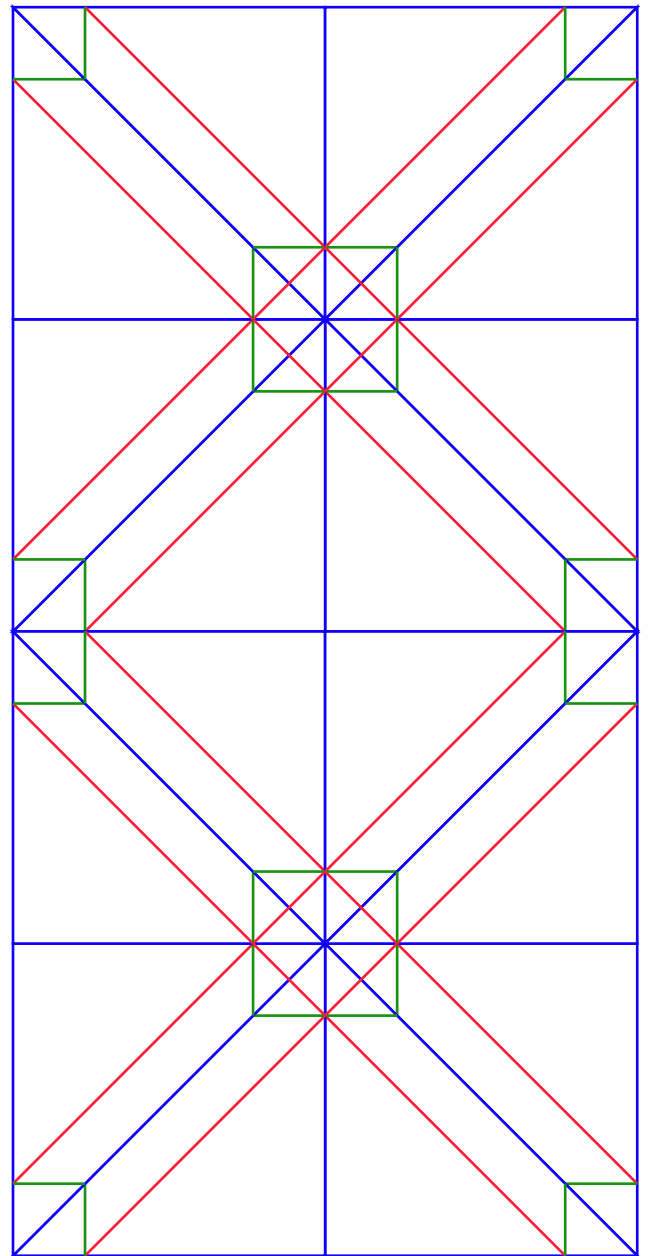
2. Make a quilt sandwich, basting together the back, the wadding and the top.

3. Quilt as desired then trim the wall hanging, removing excess wadding and backing. We quilted horizontal lines using a cream Aurifil 40wt thread on the front and back.

4. Bind the quilt taking care to mitre the corners.

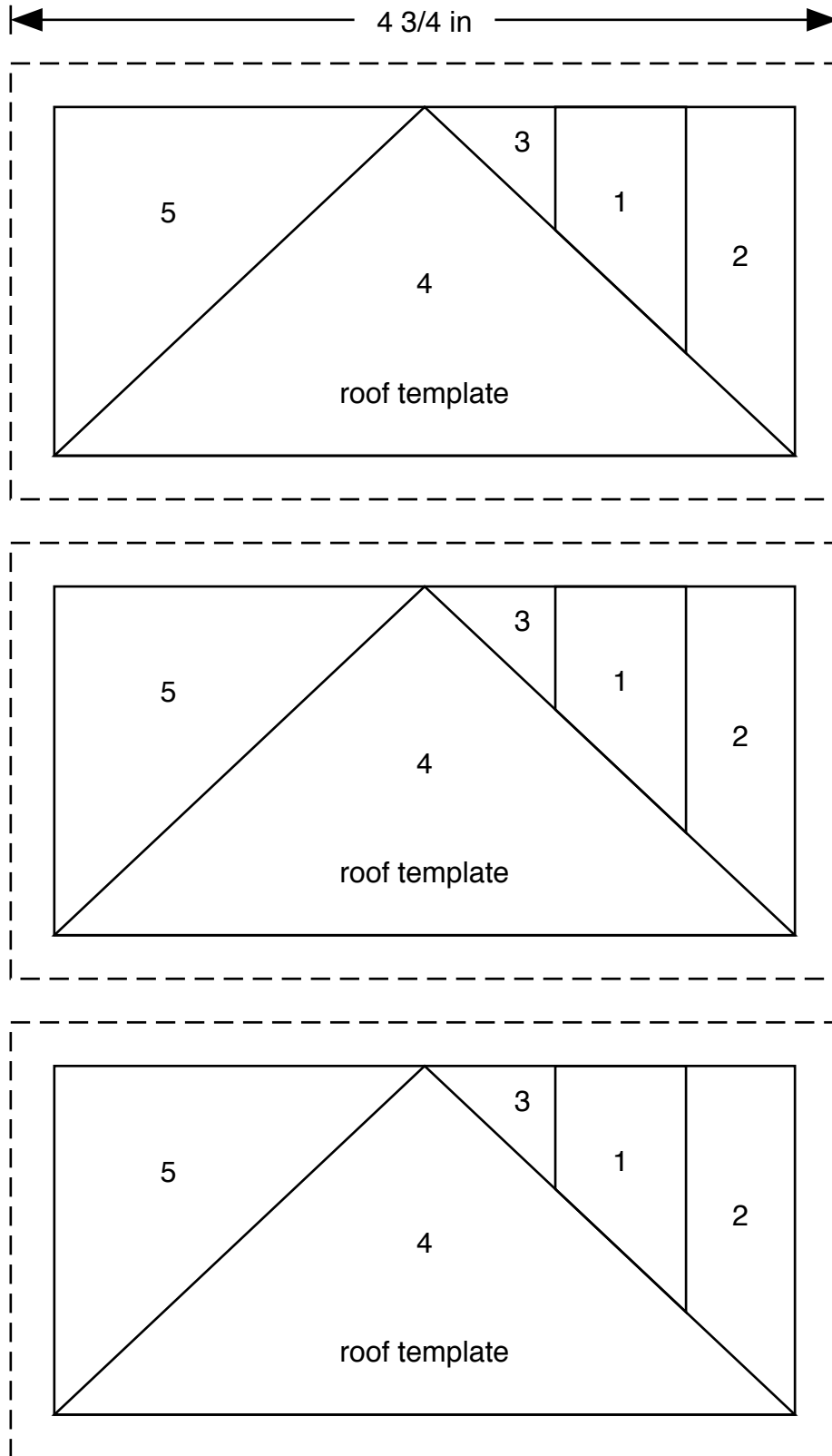


Templates must be printed at 100% or "no scaling". To ensure the templates are the correct size, measure the guide line to make sure it has printed at the correct length.



← 3 1/4 in →

← 3 1/4 in →



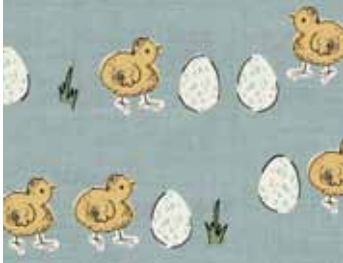
Templates must be printed at 100% or "no scaling". To ensure the templates are the correct size, measure the guide line to make sure it has printed at the correct length.



\*1776/Q Animals



\*1776/B Animals



\*1779/B Eggs & Chicks



\*1778/B Hens



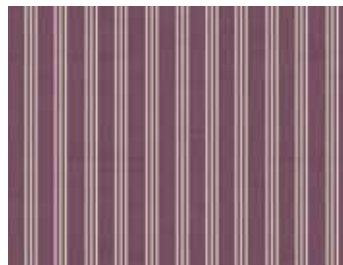
\*1779/Y Eggs & Chicks



1778/Y Hens



1777/Q Vegetables



1780/L Stripe



\*1777/V Vegetables



1780/R Stripe



\*1473/Q Linen Texture



\*1473/Q3 Linen Texture



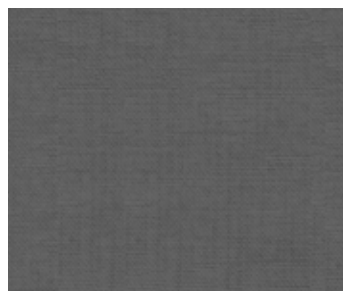
\*1473/B4 Linen Texture



\*1473/G4 Linen Texture



\*1473/S4 Linen Texture



\*1473/S8 Linen Texture



Home Grown by Lynne Goldsworthy of [lilysquilts.blogspot.com](http://lilysquilts.blogspot.com)

Finished size 29" x 52" (75 x 130cm)

Download free from [www.makoweruk.com](http://www.makoweruk.com)

\* designs used in quilt